

REVISION BB

DO NOT SCALE FROM THIS PRINT

POST HEIGHT	"A"
-01	.120 [3.05]
-02	.075 [1.91]
-03	.065 [1.65]
-04	.150 [3.81]

OPTIONS	"B" ±.010
NONE	.090 [2.29]
-ES, -EC	.090 [2.29]
-EJ, -EJ-K	.106 [2.70]
-EP	.090 [2.29]
-EL	.090 [2.29]
-K	.090 [2.29]

UNLESS OTHERWISE NOTED
DIMENSIONS ARE IN INCHES TOLERANCES ARE:
ONE PLACE DECIMALS ±.1[2.54] THREE PLACE DECIMALS ±.005[.13]
TWO PLACE DECIMALS ±.01[.25] FOUR PLACE DECIMALS ±.0010[.025]
ANGLES ± 1°

TITLE:
.050 x .050 C.L.
THROUGH HOLE
TERMINAL STRIP

DWG NO:
FTSH-1XX-XX-XX-D-XX
SHEET 1 OF 2

FTSH-1XX-XX-XX-D-XX

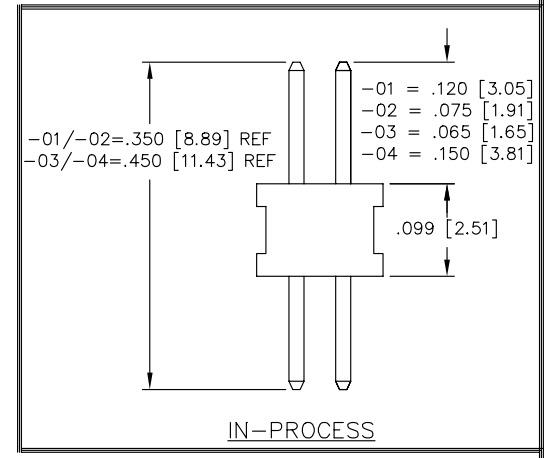
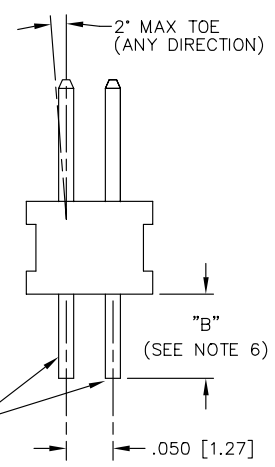
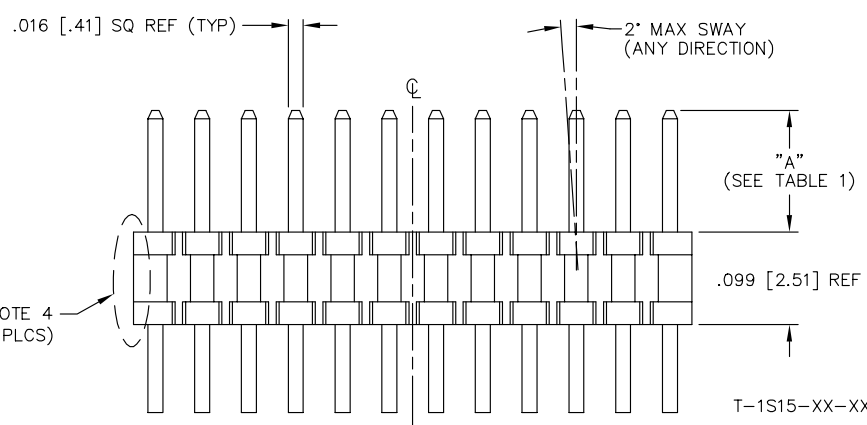
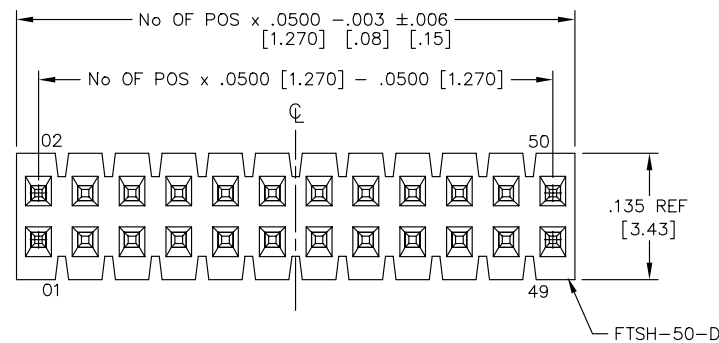
No OF POS. PER ROW
-02 THRU -50

POST HEIGHT
-01: .120 [3.05]
(USE T-1S15-02-XX)
-02: .075 [1.91]
(USE T-1S15-02-XX)
-03: .065 [1.65] MIN
(USE T-1S15-04-XX)
-04: .150 [3.81] MIN
(USE T-1S15-04-XX)

OPTIONS
-ES: END SHROUDS (SEE FIG. 2, SHT. 2)
(9 POS MIN; -02 & -03 LEAD STYLE ONLY, USE FTSH-ES SHROUD)
(5 POS MIN; -02 AND -03 LEAD STYLE ONLY, USE FTSH-49-ES-XX BODY MOLDED IN END SHROUD)
-EJ: EJECTOR SHROUDS (SEE FIG. 3, SHT. 2)
(10 POS MIN; -01 LEAD STYLE ONLY)
-EC: LOCKING CLIP (SEE FIG. 4, SHT. 2)
(9 POS MIN; -02 & -03 LEAD STYLES ONLY)
-EP: GUIDE POST: (SEE FIG. 5, SHT. 2)
(9 POS MIN; -02 & -03 LEAD STYLES ONLY) (USE ONLY WHEN MATING WITH CLP)
-EL: BOARD LOCKS (SEE FIG. 6, SHT. 2)
(9 POS MIN; -02 & -03 LEAD STYLES ONLY) (USE ONLY WHEN MATING WITH CLP)
-K: KEYING OPTION FOR MATING WITH FFSD (POSITIONS 5 - 25 ONLY)
[POSITION 13, 17, 20 & 25 AVAILABLE WITH ANY END SHROUD OPTION]
(LEAD STYLE -01 ONLY, SEE FIG. 7, SHT 2)

PLATING
-F: FLASH SELECTIVE (USE T-1S15-XX-F)
-L: LIGHT SELECTIVE (USE T-1S15-XX-L)
-S: SELECTIVE (USE T-1S15-XX-S)
-H: HEAVY (USE T-1S15-XX-H)
-FM: FLASH SELECTIVE W/ MATTE TIN TAILS (USE T-1S15-XX-F)
-LM: LIGHT SELECTIVE W/ MATTE TIN TAILS (USE T-1S15-XX-L)
-SM: SELECTIVE W/ MATTE TIN TAILS (USE T-1S15-XX-S)

TAIL OPTION
-D: DOUBLE ROW THROUGH HOLE



LEAD STYLE	OPTION(S)	PACKAGING TUBE	PLUG
01, 02, 03	NONE	PT-1-24-01-43	TP-24
04	NONE	PT-1-24-11-09	TP-09
ALL	-EJ, -EJ-K	PT-1-24-05-09	TP-07
ALL	-EC, -EC-K	PT-1-24-01-53	TP-24
ALL	-EL, -EP, -EL-K, -EP-K	PT-1-24-03-09	TP-09
ALL	-K	PT-1-24-11-09	TP-09
ALL	-ES, -ES-K	PT-1-24-01-55	TP-24

- NOTES:
- TERMINALS TO BE SHEARED TO MEET DIMENSION SPECIFICATION.
 - PARTS MAY BE CUT TO POSITION.
 - MINIMUM PUSHOUT FORCE: 1.0 LB.
 - .010 [.25] MAXIMUM CUT FLASH.
 - LAYER PACKAGE 2-4 POSITIONS AND TUBE 5-50 POSITIONS.
 - .003" [.08"] MAX BURR ALLOWANCE

PROPRIETARY NOTE
THIS DOCUMENT CONTAINS INFORMATION CONFIDENTIAL AND PROPRIETARY TO SAMTEC INC. AND SHALL NOT BE REPRODUCED OR TRANSFERRED TO OTHER DOCUMENTS OR DISCLOSED TO OTHERS OR USED FOR ANY PURPOSE OTHER THAN THAT FOR WHICH IT WAS OBTAINED WITHOUT THE EXPRESSED WRITTEN CONSENT OF SAMTEC INC.

MATERIAL:
INSULATOR:
BLACK LIQUID CRYSTAL POLYMER,
30% GLASS FILLED

TERMINAL:
PHOSPHOR BRONZE, ALLOY
NO. 510, GRADE A, FED. SPEC.
QQ-B-750, SPRING TEMPER

EXISPROD/ASSEMBLY/050
FTSH-TH

520 PARK EAST BLVD. NEW ALBANY, INDIANA 47150
PHONE (812) 944-6733 P.O. BOX 1147
CODE 55322

MADE BY:
J. FERRY 02-27-96

FTSH-1XX-XX-XX-D-XX
SHEET 1 OF 2