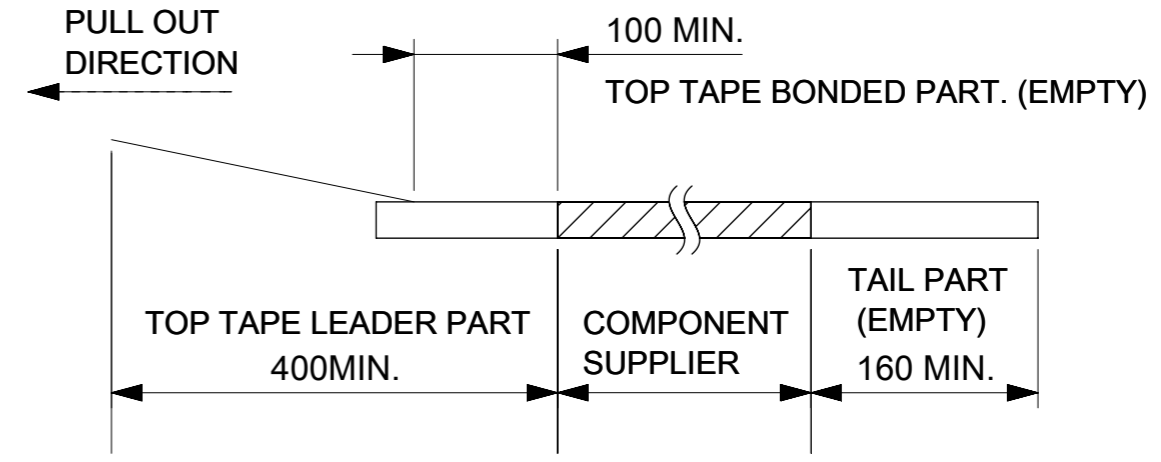
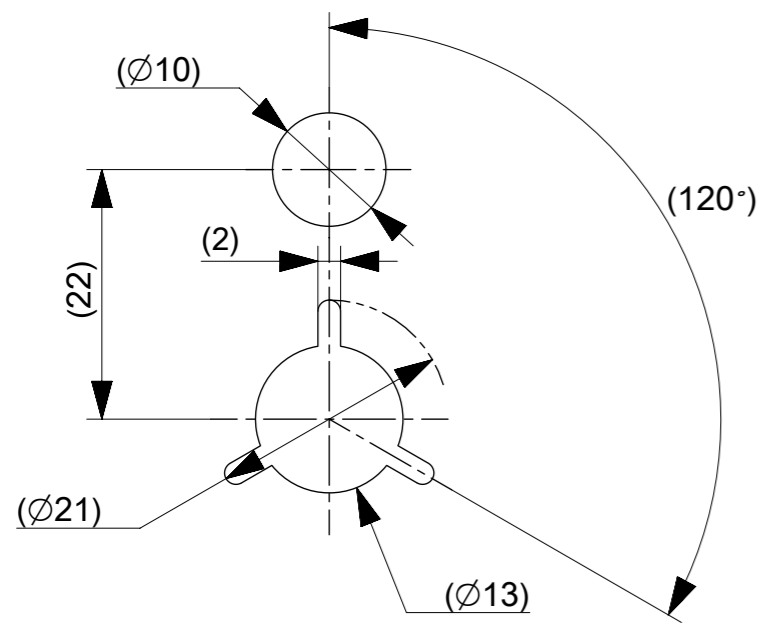


NOTES

1. REGARDING DETAILED DIMENSION, SEE PRODUCT DRAWING.
2. NUMBER OF CONNECTORS : 20000PCS/REEL
3. LEAD TAPE LENGTH.

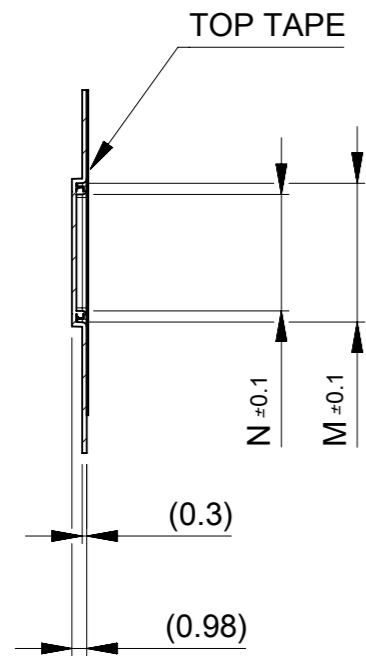


4. PEELING OFF FORCE OF THE TOP TAPE IS DEFINED BY IEC60286-3.
5. MATERIAL
 CARRIER TAPE : POLYSTYRENE OR PET
 TOP TAPE : PET , OTHER
 REEL : POLYSTYRENE (PS) < RECYCLE MATERIAL CONTAINED >

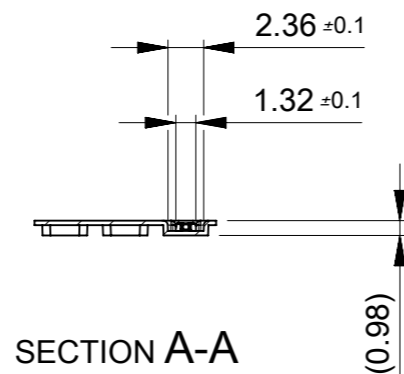
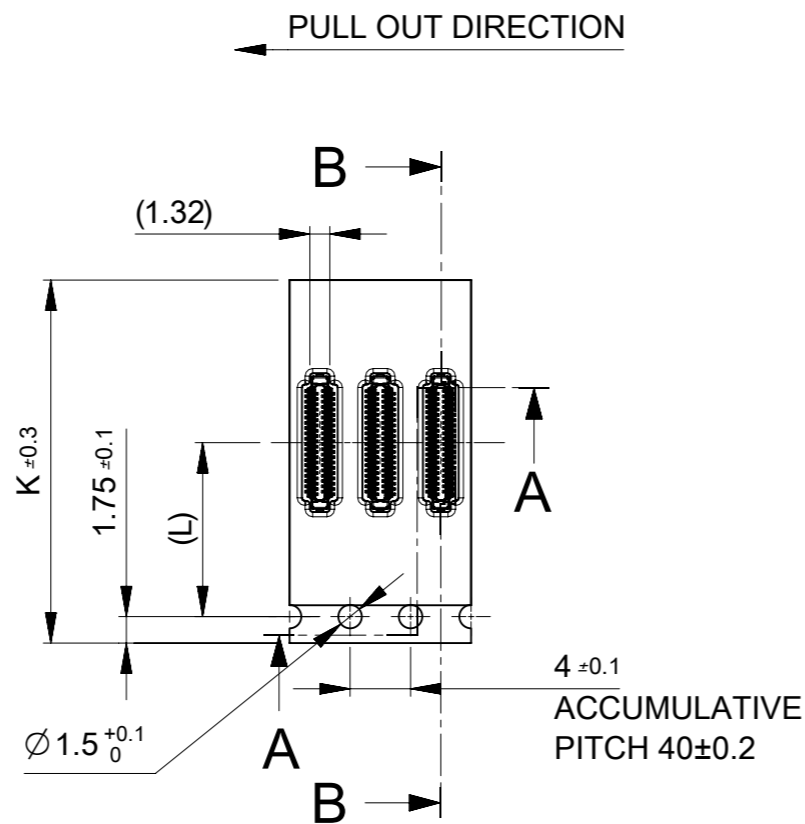


DETAIL "D"

THIS DRAWING CONTAINS INFORMATION THAT IS PROPRIETARY TO MOLEX ELECTRONIC TECHNOLOGIES, LLC AND SHOULD NOT BE USED WITHOUT WRITTEN PERMISSION													
DIMENSION UNITS		SCALE		CURRENT REV DESC:				molex					
mm		NTS											
GENERAL TOLERANCES (UNLESS SPECIFIED)				EC NO: 815332 DRWN: AISHII 2025/03/07 CHK'D: YKOBAYASHI02 2025/03/25 APPR: KSASAKI 2025/03/25 INITIAL REVISION: DRWN: AISHII 2024/11/01 APPR: KSASAKI 2025/03/25				0.175 QUAD-ROW H0.6 PLUG EMBS PACKAGE					
ANGULAR TOL ± 3.0°								PRODUCT CUSTOMER DRAWING					
4 PLACES ± 0.03		3 PLACES ± 0.03						DOCUMENT NUMBER		DOC TYPE		DOC PART	
2 PLACES ± 0.05		1 PLACE ± 0.1						2277920000-SD		PSD		001	
0 PLACES ± 0.2		DRAFT WHERE APPLICABLE MUST REMAIN WITHIN DIMENSIONS						THIRD ANGLE PROJECTION		DRAWING		SERIES	
				A3-SIZE		227792		MATERIAL NUMBER					
				SEE CHART		CUSTOMER		GENERAL					
								SHEET NUMBER					
								1 OF 2					



SECTION B-B

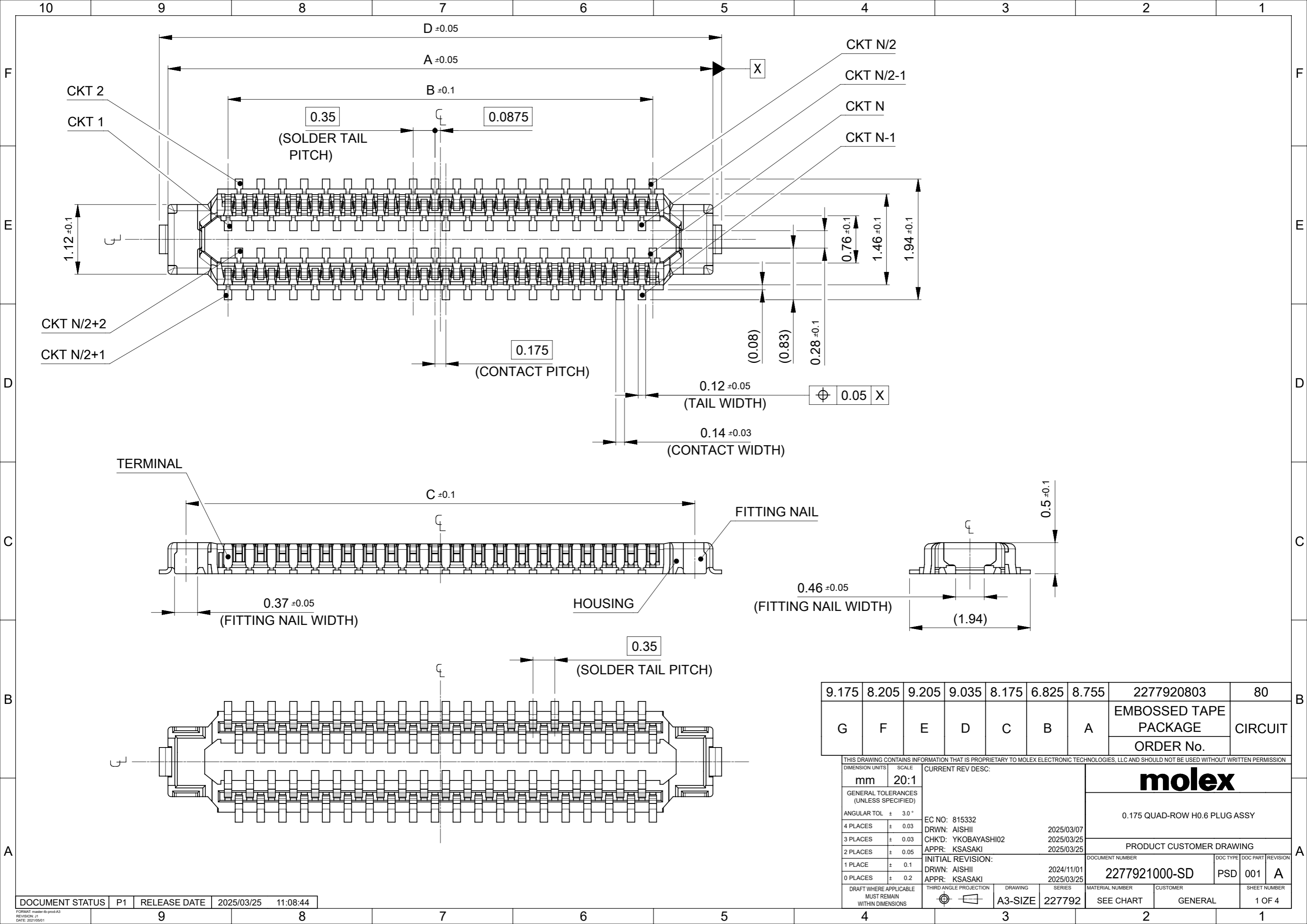


SECTION A-A

2277920803	7.7	9.175	11.5	24	29.4	25.4	80
ORDER NO.	N	M	L	K	J	H	CIRCUIT

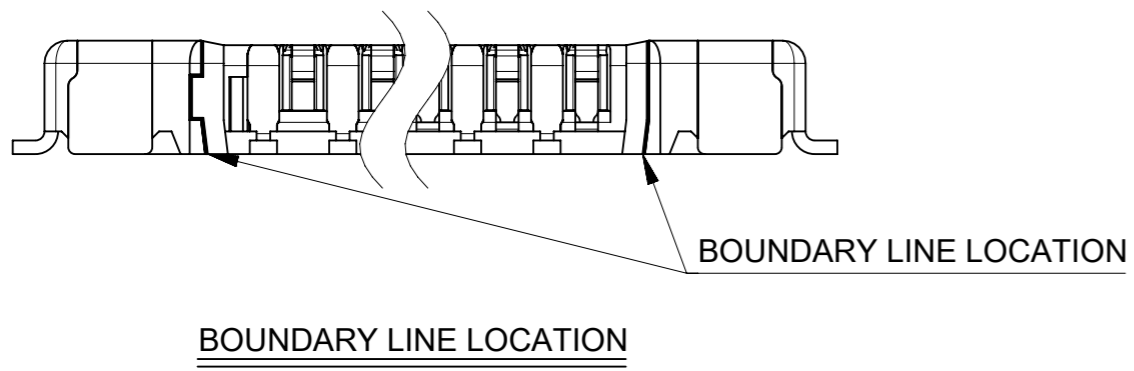
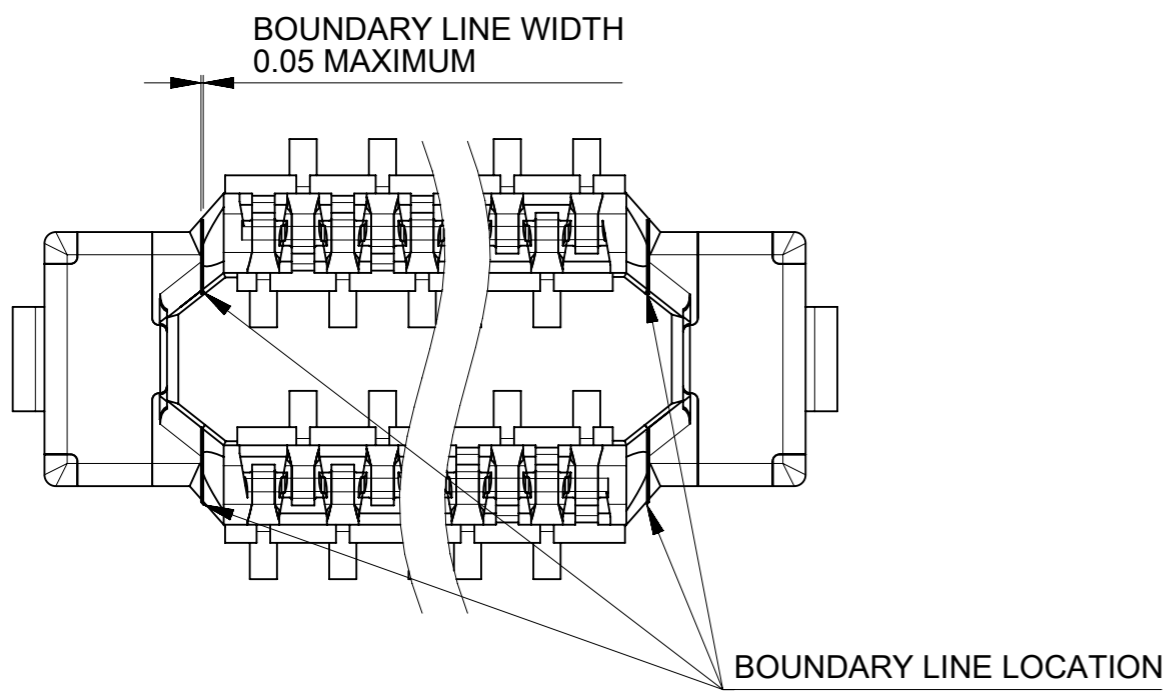
THIS DRAWING CONTAINS INFORMATION THAT IS PROPRIETARY TO MOLEX ELECTRONIC TECHNOLOGIES, LLC AND SHOULD NOT BE USED WITHOUT WRITTEN PERMISSION		CURRENT REV DESC:		molex				
DIMENSION UNITS	SCALE	EC NO: 815332						0.175 QUAD-ROW H0.6 PLUG EMBS PACKAGE
mm	NTS	DRWN: AISHII 2025/03/07		PRODUCT CUSTOMER DRAWING				
GENERAL TOLERANCES (UNLESS SPECIFIED)		CHK'D: YKOBAYASHI02 2025/03/25		DOCUMENT NUMBER				
ANGULAR TOL ± 3.0°		APPR: KSASAKI 2025/03/25		2277920000-SD		DOC TYPE	DOC PART	REVISION
4 PLACES	± 0.03	INITIAL REVISION:		2024/11/01		PSD	001	A
3 PLACES	± 0.03	DRWN: AISHII		2025/03/25		SHEET NUMBER		
2 PLACES	± 0.05	APPR: KSASAKI		2025/03/25		2 OF 2		
1 PLACE	± 0.1	DRAFT WHERE APPLICABLE MUST REMAIN WITHIN DIMENSIONS		THIRD ANGLE PROJECTION	DRAWING	SERIES	MATERIAL NUMBER	CUSTOMER
0 PLACES	± 0.2				A3-SIZE	227792	SEE CHART	GENERAL

DOCUMENT STATUS	P1	RELEASE DATE	2025/03/25	11:08:43
-----------------	----	--------------	------------	----------



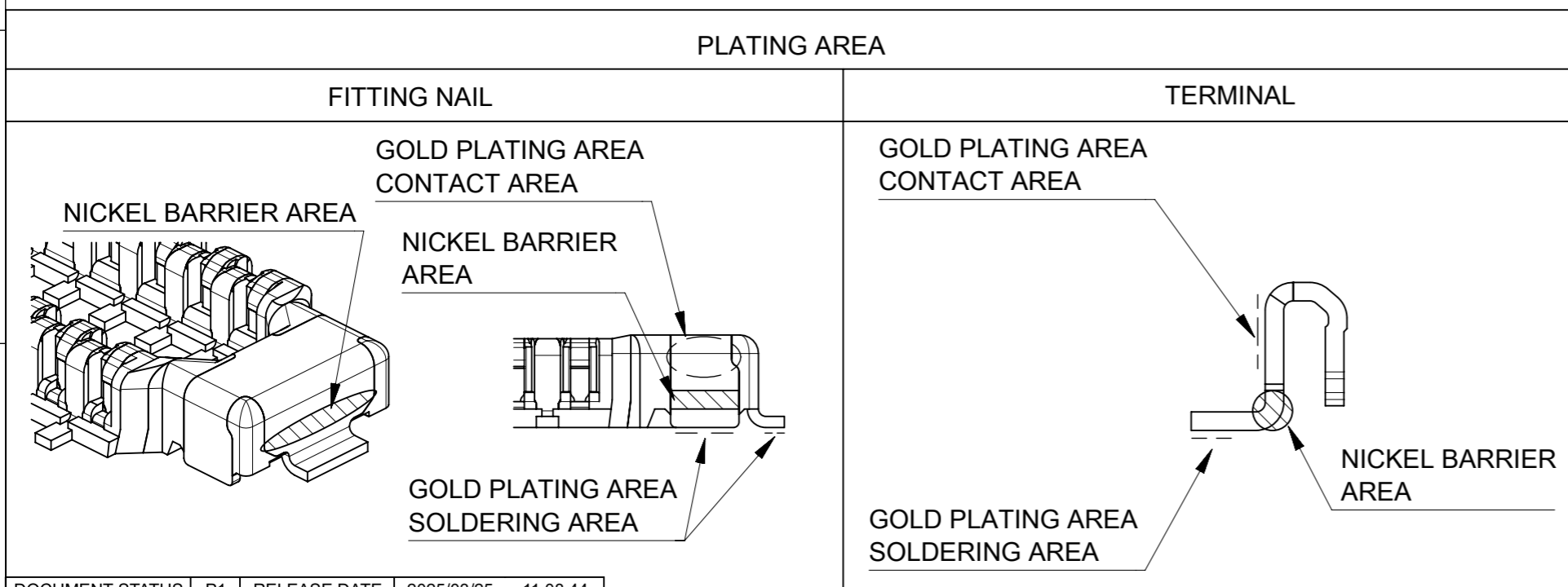
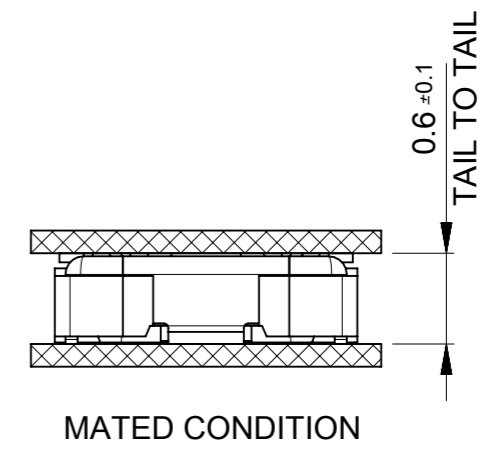
9.175	8.205	9.205	9.035	8.175	6.825	8.755	2277920803	80
G	F	E	D	C	B	A	EMBOSSED TAPE PACKAGE	CIRCUIT
							ORDER No.	

THIS DRAWING CONTAINS INFORMATION THAT IS PROPRIETARY TO MOLEX ELECTRONIC TECHNOLOGIES, LLC AND SHOULD NOT BE USED WITHOUT WRITTEN PERMISSION									
DIMENSION UNITS mm		SCALE 20:1		CURRENT REV DESC:					
GENERAL TOLERANCES (UNLESS SPECIFIED)				molex 0.175 QUAD-ROW H0.6 PLUG ASSY PRODUCT CUSTOMER DRAWING					
ANGULAR TOL		± 3.0 °							
4 PLACES		± 0.03							
3 PLACES		± 0.03							
2 PLACES		± 0.05							
1 PLACE		± 0.1		EC NO: 815332		2025/03/07			
0 PLACES		± 0.2		DRWN: AISHII		2025/03/25			
DRAFT WHERE APPLICABLE MUST REMAIN WITHIN DIMENSIONS				THIRD ANGLE PROJECTION		DRAWING A3-SIZE		SERIES 227792	
				MATERIAL NUMBER SEE CHART		CUSTOMER GENERAL		SHEET NUMBER 1 OF 4	

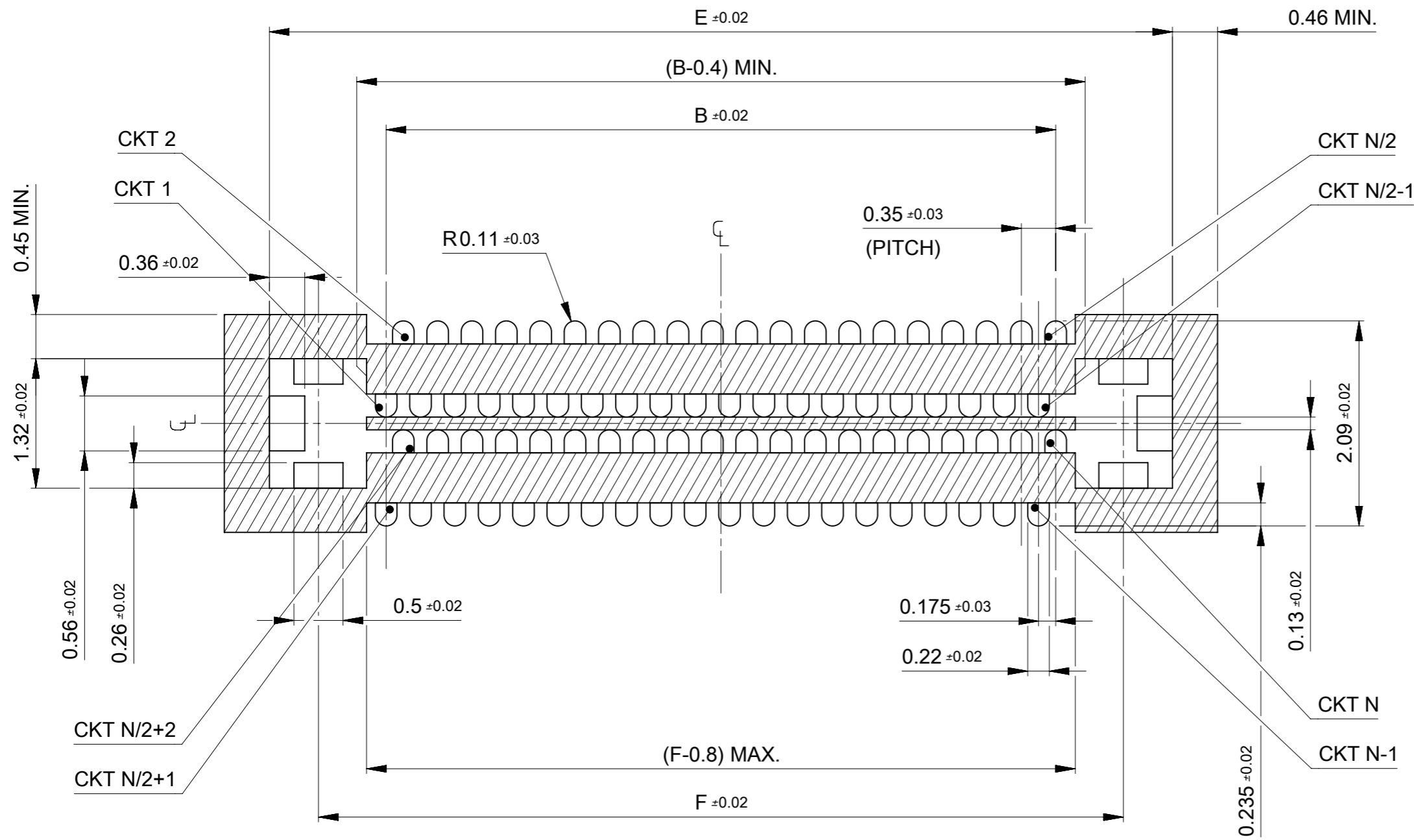


NOTES

1. MATERIAL
HOUSING : LIQUID CRYSTAL POLYMER UL94V-0(COLOR : BLACK)
TERMINAL : COPPER ALLOY
FITTING NAIL : COPPER ALLOY
2. PLATING
TERMINAL
CONTACT AREA : GOLD 0.1 μm MINIMUM
TAIL AREA : GOLD 0.05 μm MINIMUM
UNDER PLATING : NICKEL 1.0 μm MINIMUM
*DIVIDE INTO PARTS THE GOLD PLATING OF CONTACT AND THE TAIL PART BY THE NICKEL PLATING.
*EITHER GOLD OR NICKEL PLATING IS ACCEPTABLE IN THE AREA WHICH IS NOT SPECIFIED AS CONTACT TAIL OR NICKEL BARRIER.
FITTING NAIL
CONTACT AREA : GOLD 0.1 μm MINIMUM
TAIL AREA : GOLD 0.05 μm MINIMUM
UNDER PLATING : NICKEL 1.0 μm MINIMUM
*DIVIDE INTO PARTS THE GOLD PLATING OF CONTACT AND THE TAIL PART BY THE NICKEL PLATING.
*EITHER GOLD OR NICKEL PLATING IS ACCEPTABLE IN THE AREA WHICH IS NOT SPECIFIED AS CONTACT TAIL OR NICKEL BARRIER.
3. MATE WITH : 2277940**3
4. TAIL AND FITTING NAIL COPLANARITY TO BE 0.08mm MAXIMUM.



THIS DRAWING CONTAINS INFORMATION THAT IS PROPRIETARY TO MOLEX ELECTRONIC TECHNOLOGIES, LLC AND SHOULD NOT BE USED WITHOUT WRITTEN PERMISSION									
DIMENSION UNITS		SCALE		CURRENT REV DESC:					
mm		1:1							
GENERAL TOLERANCES (UNLESS SPECIFIED)				EC NO: 815332				0.175 QUAD-ROW H0.6 PLUG ASSY	
ANGULAR TOL \pm 3.0 °				DRWN: AISHII 2025/03/07				PRODUCT CUSTOMER DRAWING	
4 PLACES \pm 0.03				CHK'D: YKOBAYASHI02 2025/03/25				DOCUMENT NUMBER	
3 PLACES \pm 0.03				APPR: KSASAKI 2025/03/25				2277921000-SD	
2 PLACES \pm 0.05				INITIAL REVISION:				DOC TYPE DOC PART REVISION	
1 PLACE \pm 0.1				DRWN: AISHII 2024/11/01				PSD 001 A	
0 PLACES \pm 0.2				APPR: KSASAKI 2025/03/25				SHEET NUMBER	
DRAFT WHERE APPLICABLE MUST REMAIN WITHIN DIMENSIONS		THIRD ANGLE PROJECTION		DRAWING		SERIES		MATERIAL NUMBER CUSTOMER	
				A3-SIZE		227792		SEE CHART GENERAL	

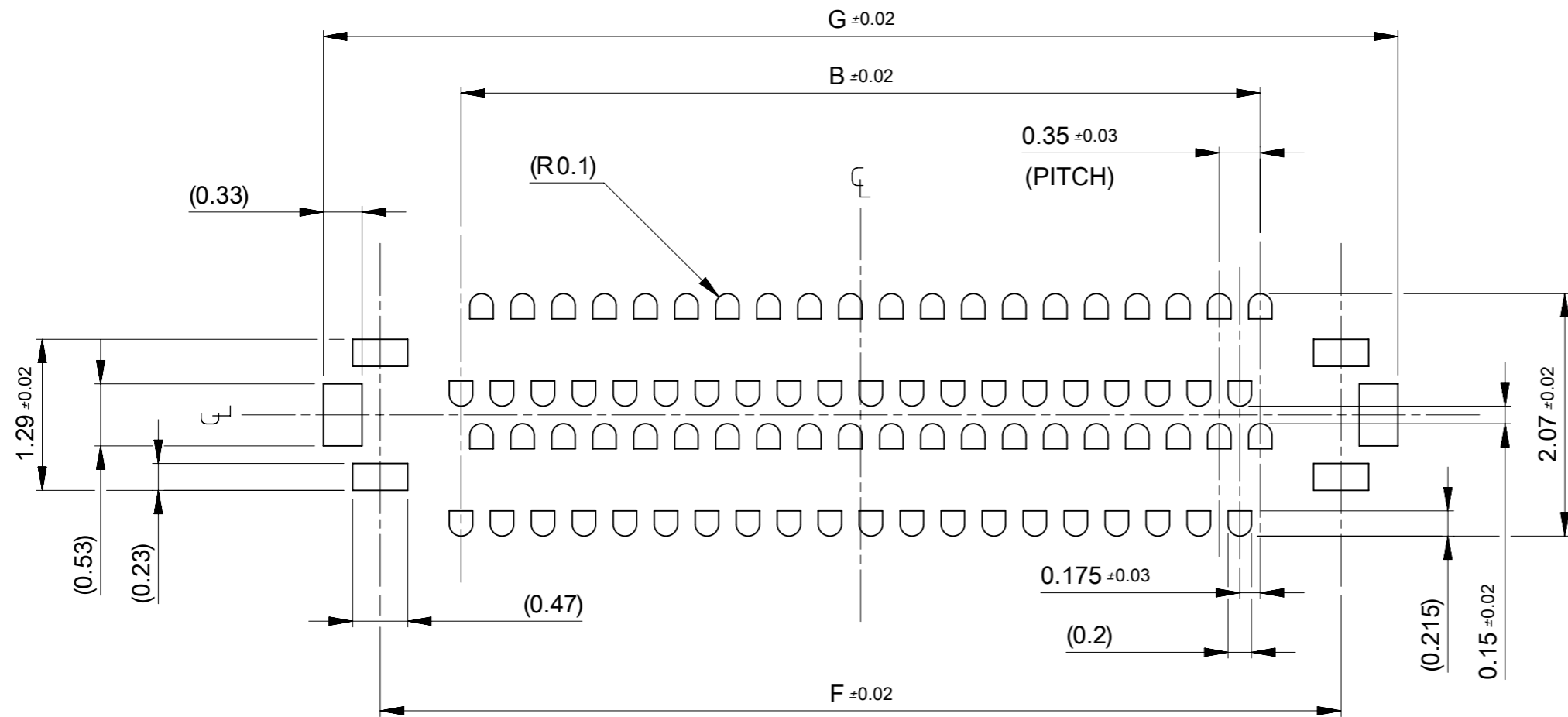


RECOMMENDED P.C. BOARD PATTERN LAYOUT (REFERENCE)
(SURFACE MOUNT OPENING DIMENSION)



SOLDERING PROHIBITED AREA
WHEN WIRING IS LOCATED,
THE WIRING MUST BE MASKED BY COVER LAY OR RESIST FILM.


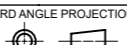
THIS DRAWING CONTAINS INFORMATION THAT IS PROPRIETARY TO MOLEX ELECTRONIC TECHNOLOGIES, LLC AND SHOULD NOT BE USED WITHOUT WRITTEN PERMISSION									
DIMENSION UNITS		SCALE		CURRENT REV DESC:				molex	
mm		20:1							
GENERAL TOLERANCES (UNLESS SPECIFIED)				EC NO: 815332				0.175 QUAD-ROW H0.6 PLUG ASSY	
ANGULAR TOL ± 3.0 °				DRWN: AISHII 2025/03/07				PRODUCT CUSTOMER DRAWING	
4 PLACES ± 0.03				CHK'D: YKOBAYASHI02 2025/03/25				DOCUMENT NUMBER	
3 PLACES ± 0.03				APPR: KSASAKI 2025/03/25				2277921000-SD	
2 PLACES ± 0.05				INITIAL REVISION:				DOC TYPE	
1 PLACE ± 0.1				DRWN: AISHII 2024/11/01				PSD	
0 PLACES ± 0.2				APPR: KSASAKI 2025/03/25				DOC PART	
DRAFT WHERE APPLICABLE MUST REMAIN WITHIN DIMENSIONS				THIRD ANGLE PROJECTION		DRAWING		REVISION	
		A3-SIZE		SERIES		MATERIAL NUMBER		SHEET NUMBER	
		227792		227792		SEE CHART		3 OF 4	
		GENERAL							



RECOMMENDED METAL MASK LAYOUT (REFERENCE)

RECOMMENDED THICKNESS OF METAL MASK : $t=0.08\text{mm}$

RECOMMENDED OPEN APERTURE RATIO OF METAL MASK : 80%

THIS DRAWING CONTAINS INFORMATION THAT IS PROPRIETARY TO MOLEX ELECTRONIC TECHNOLOGIES, LLC AND SHOULD NOT BE USED WITHOUT WRITTEN PERMISSION												
DIMENSION UNITS	SCALE	CURRENT REV DESC:										
mm	20:1											
GENERAL TOLERANCES (UNLESS SPECIFIED)		EC NO: 815332					0.175 QUAD-ROW H0.6 PLUG ASSY					
ANGULAR TOL		± 3.0 °	DRWN: AISHII 2025/03/07					PRODUCT CUSTOMER DRAWING				
4 PLACES		± 0.03	CHK'D: YKOBAYASHI02 2025/03/25					DOCUMENT NUMBER				
3 PLACES		± 0.03	APPR: KSASAKI 2025/03/25					2277921000-SD		DOC TYPE	DOC PART	REVISION
2 PLACES		± 0.05	INITIAL REVISION:					227792		PSD	001	A
1 PLACE		± 0.1	DRWN: AISHII 2024/11/01					SEE CHART		GENERAL		SHEET NUMBER
0 PLACES		± 0.2	APPR: KSASAKI 2025/03/25					4 OF 4				
DRAFT WHERE APPLICABLE MUST REMAIN WITHIN DIMENSIONS		THIRD ANGLE PROJECTION	DRAWING	SERIES	MATERIAL NUMBER	CUSTOMER						
			A3-SIZE	227792	SEE CHART	GENERAL						

DOCUMENT STATUS	P1	RELEASE DATE	2025/03/25	11:08:44
-----------------	----	--------------	------------	----------