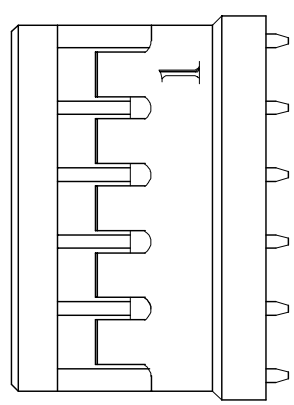
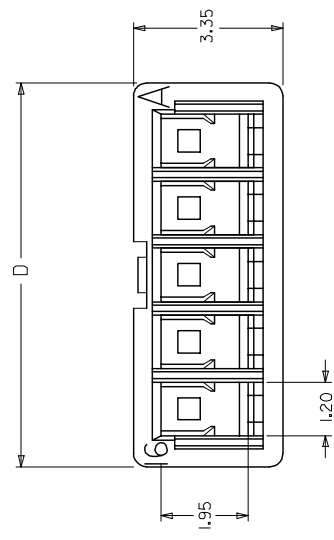
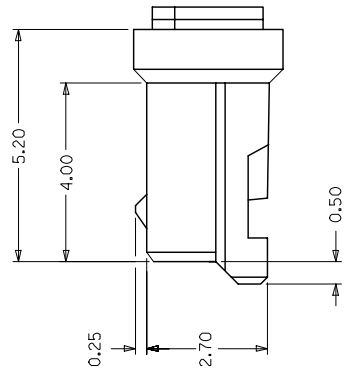
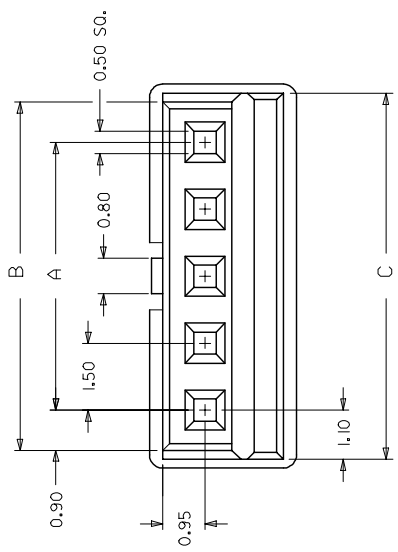


| PART NO. | NO. OF CKT'S | A | B | C | D |
|------------|--------------|-------|-------|-------|-------|
| 87439-0200 | 2 | 1.50 | 3.30 | 3.70 | 4.10 |
| 87439-0300 | 3 | 3.00 | 4.80 | 5.20 | 5.60 |
| 87439-0400 | 4 | 4.50 | 6.30 | 6.70 | 7.10 |
| 87439-0500 | 5 | 6.00 | 7.80 | 8.20 | 8.60 |
| 87439-0600 | 6 | 7.50 | 9.30 | 9.70 | 10.10 |
| 87439-0700 | 7 | 9.00 | 10.80 | 11.20 | 11.60 |
| 87439-0800 | 8 | 10.50 | 12.30 | 12.70 | 13.10 |
| 87439-0900 | 9 | 12.00 | 13.80 | 14.20 | 14.60 |
| 87439-1000 | 10 | 13.50 | 15.30 | 15.70 | 16.10 |
| 87439-1100 | 11 | 15.00 | 16.80 | 17.20 | 17.60 |
| 87439-1200 | 12 | 16.50 | 18.30 | 18.70 | 19.10 |
| 87439-1300 | 13 | 18.00 | 19.80 | 20.20 | 20.60 |
| 87439-1400 | 14 | 19.50 | 21.30 | 21.70 | 22.10 |
| 87439-1500 | 15 | 21.00 | 22.80 | 23.20 | 23.60 |



NOTE: HOUSING TO ACCEPT MOLEX P/N 87421-0000

| MATERIAL : | | MOLEX SINGAPORE | | | |
|-----------------|-----------------------------|-------------------------------|------|-----|--------|
| NYLON 66, | | PTE LTD | | | |
| 94V-0 | | SHEET 1 OF 1 | | | |
| COLOR: NATURAL | | DIM: mm | | | |
| FINISH : | | GENERAL TOLERANCES * 0.20/008 | | | |
| NOT APPLICABLE | | REV AT | | | |
| DRAWN BY JDK | | DWG. NO: SD 87439-**00 | | | |
| 940328 | | TITLE : 1.50 mm PITCH, | | | |
| APPRD BY R WONG | | HOUSING, RECEPTACLE | | | |
| 940421 | | NTS | | | |
| REVISION RECORD | | REVISE ONLY ON CAD SYSTEM | | | |
| LTR | REVISION RECORD | ECN | DR | CHK | DATE |
| A7 | REVISED PER ECN# S2000-0309 | - | JING | - | 080222 |
| A6 | REVISED PER ECN# S1998-0451 | - | JING | TOH | 980323 |
| A5 | REVISED PER ECN# S1998-0402 | - | JING | TOH | 980303 |
| A4 | REVISED PER ECN# S70107 | - | JING | TOH | 960909 |

THIS DRAWING CONTAINS INFORMATION THAT IS PROPRIETARY TO MOLEX (S) PTE LTD AND SHOULD NOT BE USED WITHOUT WRITTEN PERMISSION

- A3 REVISED PER ECN# S60591 LING TOH 960619
- A2 REVISED PER ECN# S60427 LING POH 960311
- A1 REVISED PER ECN# S50567 LING POH 950525
- A REVISED PER ECN# S50336 LING POH 950306
- 3 REVISED PER ECN# S50066 LING POH 940914
- 2 REVISED PER ECN# S40529 LING TOH 940512
- 1 PRELIMINARY RELEASE S40480 JDK TOH 940328

DO NOT SCALE DRAWING

CAD FILE S87439.DGN
 DWG. NO. SD 87439-**00