



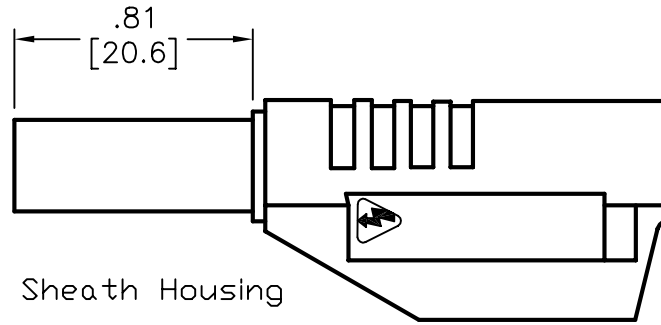
ALL RIGHTS RESERVED. NO PORTION OF THIS PUBLICATION, WHETHER IN WHOLE OR IN PART CAN BE REPRODUCED WITHOUT THE EXPRESS WRITTEN CONSENT OF SPC TECHNOLOGY.

SPC-F005.DWG

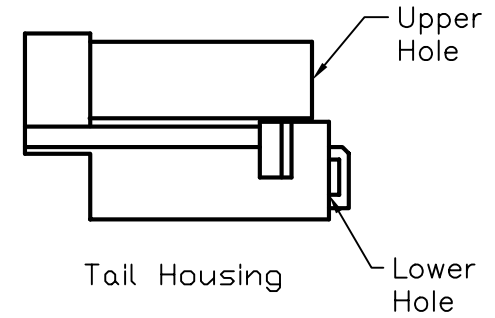
REVISIONS

DOC. NO. SPC-F005 * Effective: 7/8/02 * DCP No: 1398

DCP #	REV	DESCRIPTION	DRAWN	DATE	CHECKD	DATE	APPRVD	DATE
615	A	RELEASED	JWM	6/7/01	HO	8/2/02	DJC	8/2/02



Sheath Housing



Tail Housing

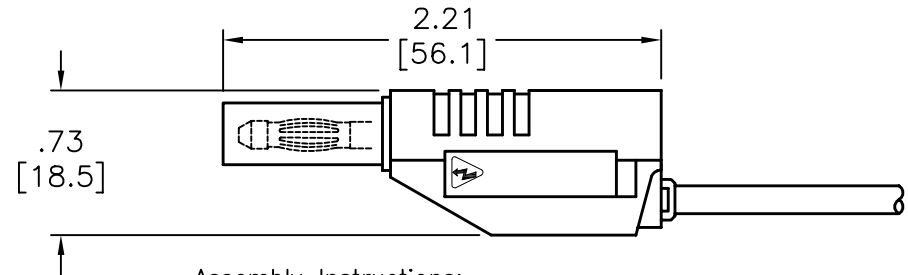


Plug Assembly

- SPECIFICATIONS:
 INSULATOR BODY: POLYACETAL
 PLUG BODY: BRASS, NICKEL PLATED
 CONTACT SPRING: BECU, NICKEL PLATED

- RATING:
 VOLTAGE: 1000V CATIII P2 IEC61010-2-031
 REINFORCED INSULATION, CE MARK
 CURRENT: 36A MAX.
 INTERNAL RESISTANCE: <20milliohms
 TEMPERATURE: -20°C TO +80°C.

- MAXIMUM WIRE SIZES:
 CONDUCTOR: Ø.090 (12AWG)
 INSULATION: Ø.156 (3.9)
 STRIP LENGTH: .25 (6.4)



Assembly Instructions:

- Slide wire through lower hole in Tail Housing.
- Strip wire .25" (6.4mm).
- Insert stripped wire into Plug Assembly side hole and tighten Set-Screw. Set-Screw requires 1.5mm Allen Wrench
- Push Plug Assembly into Tail Housing upper hole and take slack out of wire.
- Snap Tail Housing assembly into Sheath Housing.

DISCLAIMER:
 ALL STATEMENTS AND TECHNICAL INFORMATION CONTAINED HEREIN ARE BASED UPON INFORMATION AND/OR TESTS WE BELIEVE TO BE ACCURATE AND RELIABLE. SINCE CONDITIONS OF USE ARE BEYOND OUR CONTROL, THE USER SHALL DETERMINE THE SUITABILITY OF THE PRODUCT FOR THE INTENDED USE AND ASSUME ALL RISK AND LIABILITY WHATSOEVER IN CONNECTION THEREWITH.

TOLERANCES:
 Tolerances Unless
 Otherwise Specified
 .XX ±.02
 .XXX ±0.005

DRAWN BY: Jeff McVicker
 CHECKED BY: Hisham Odish
 APPROVED BY: Daniel Carey
 DATE: 6/6/01
 DATE: 8/2/02
 DATE: 8/2/02

DRAWING TITLE:
 Do-It-Yourself, 4mm, Sheathed, Stacking, Banana Plug, Red

SIZE A	DWG. NO. 76-006	ELECTRONIC FILE 16F7678.dwg	REV A
SCALE: NTS	U.O.M.: INCHES [mm]	SHEET: 1 OF 1	