

REVISION CL

LEAD STYLE	PIN A	PIN B	"C"	"D" REF
-01-SH	T-1S13-20-X-2	N/A	.126 [3.20]	.118 [3.00]
-01-DH	T-1S13-09-X-2	T-1S13-09-X-2	.126 [3.20]	.389 [9.88]
-01-MT	T-1S13-09-X-2	T-1S13-09-X-2	.126 [3.20]	NA
-02-SH	T-1S13-02-X-2	N/A	.175 [4.45]	.123 [3.12]
-02-DH	T-1S13-09-X-2	T-1S13-09-X-2	.175 [4.45]	.331 [8.41]

NOTES:

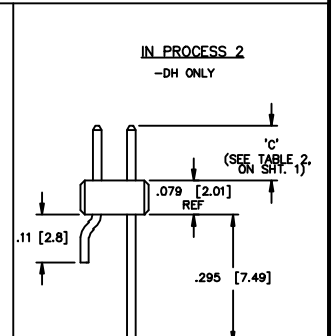
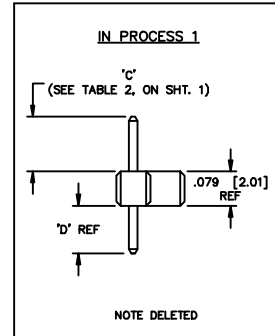
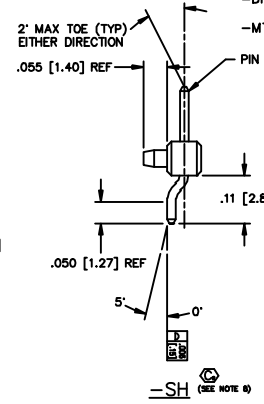
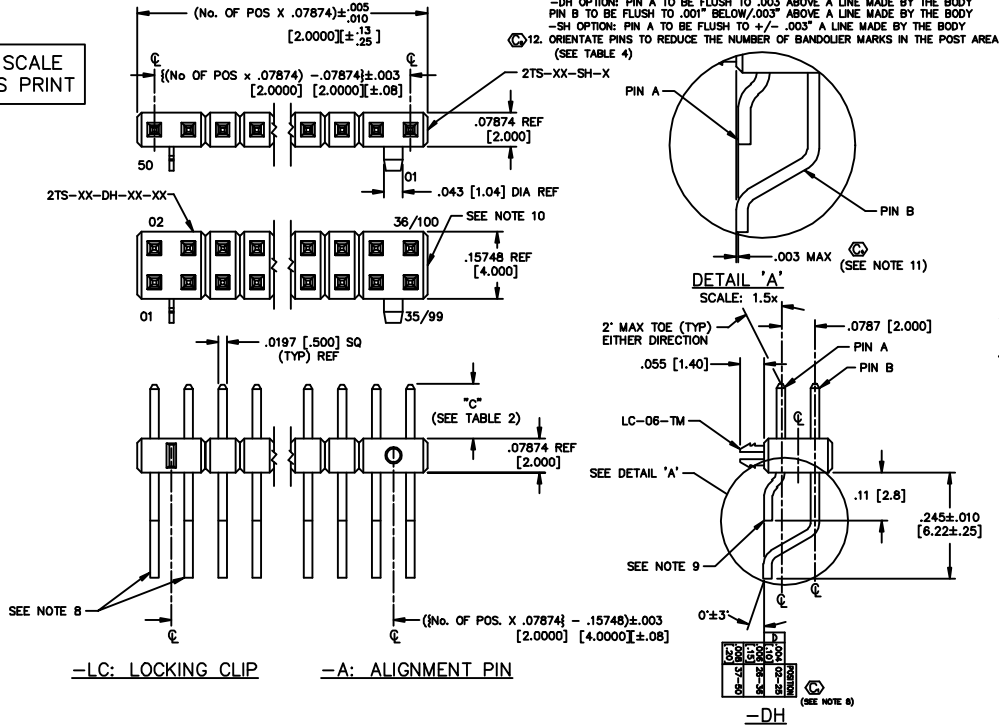
- PUSH OUT FORCE SHALL BE 2 LB. MIN.
- ⊕ REPRESENTS A CRITICAL DIMENSION
- ALL DIMENSIONS IN BRACKETS [ ] TO BE IN MILLIMETERS.
- NOTE 4 DELETED
- NOTE 5 DELETED
- NOTE 6 DELETED
- FOR NON -LC & -A, USE 2TS-XX-D.
- COPLANARITY TO INCLUDE INSULATOR.
- .002 MAX BURR ALLOWED.
- .015 MAX OUT FLASH ALLOWED. (NO FLASH TO BE ON BOTTOM OF BODY)
- MT OPTION: PIN B TO BE FLUSH TO +/- .003" A LINE MADE BY THE BODY
- DH OPTION: PIN A TO BE FLUSH TO .003 ABOVE A LINE MADE BY THE BODY  
PIN B TO BE FLUSH TO .001" BELOW/.003" ABOVE A LINE MADE BY THE BODY
- SH OPTION: PIN A TO BE FLUSH TO +/- .003" A LINE MADE BY THE BODY
- ORIENTATE PINS TO REDUCE THE NUMBER OF BANDOLIER MARKS IN THE POST AREA. (SEE TABLE 4)

DIMENSIONS ARE IN INCHES UNLESS OTHERWISE NOTED		TOLERANCES ARE:	ANGLES:	TITLE:	DWG NO.:
ONE PLACE DECIMALS: ±.1	THREE PLACE DECIMALS: ±.005	ANGLES:	2mm HORIZONTAL TERMINAL SURFACE MOUNT STRIP ASSEMBLY	MMT-1XX-XX-XX-XX-XX-XXX-X-XX	MMT-1XX-XX-XX-XX-XX-XX-XX
TWO PLACE DECIMALS: ±.01	FOUR PLACE DECIMALS: ±.0020	± 5°			SHEET 1 OF 3

MMT-1XX-XX-XX-XX-XX-XXX-X-XX

- NO. OF POSITIONS PER ROW  
(-02 THRU -50)
- LEAD STYLE  
-01: .126 [3.20] POST  
-02: .175 [4.45] POST (SEE TABLE 2)
- PLATING SPECIFICATION  
-H: HEAVY GOLD  
-S: SELECTIVE  
-L: LIGHT SELECTIVE  
-F: FLASH SELECTIVE  
-T: TIN  
-SM: SELECTIVE GOLD, MATTE TIN TAIL  
-LM: LIGHT SELECTIVE GOLD, MATTE TIN TAIL  
-FM: FLASH SELECTIVE GOLD, MATTE TIN TAIL  
-TM: MATTE TIN  
-P: GOLD/PdNi SELECTIVE
- ROW OPTION  
-SH: SINGLE (2TS-XX-SH-X-XX)  
-DH: DOUBLE (2TS-XX-DH-XX-XX) (SEE NOTE 7)  
-MT: MIXED TECHNOLOGY (2TS-XX-DH-XX-XX) (NOT AVAILABLE WITH -LC, OR -A OPTIONS)
- OPTION  
-TR: TAPE AND REEL (37 POSITION MAX) (SEE PAGE 3)  
-P: PICK & PLACE PAD (USE PPP-13) (2 POSITION MINIMUM)  
-XXX: POLARIZED POSITION  
-XXX SPECIFIES POSITION OMITTED (SEE POLARIZATION VIEW)  
-LC: LOCKING CLIP (FOR -DH USE 2TS-XX-DH-LC-XX) (SEE NOTE 7) (FOR -SH USE 2TS-XX-SH) (NOT AVAILABLE WITH -A)  
-A: ALIGNMENT PIN (FOR -DH USE 2TS-XX-DH-A-XX) (SEE NOTE 7) (FOR -SH USE 2TS-XX-SH-A-XX) (NOT AVAILABLE WITH -LC)  
-K: POLYIMIDE FILM PAD (SEE SHT. 2) (3 POS. MIN)

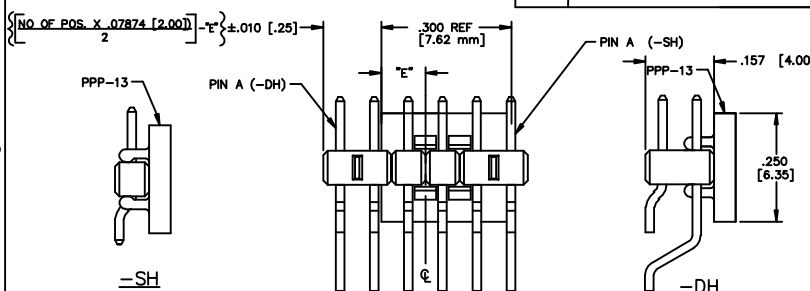
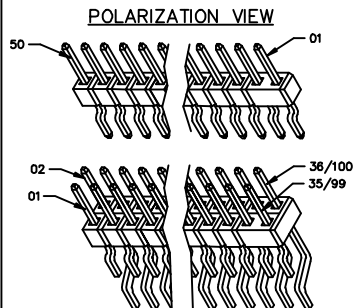
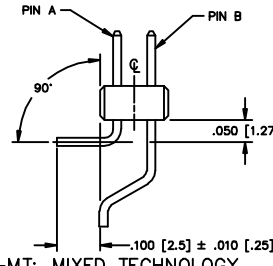
DO NOT SCALE FROM THIS PRINT



-LC: LOCKING CLIP      -A: ALIGNMENT PIN

-DH (SEE NOTE 8)

-P: PICK & PLACE PAD OPTION



POS.	"E"
ODD	.150 [3.81]
EVEN	.111 [2.82]

PROPRIETARY NOTE  
THIS DOCUMENT CONTAINS UNCLASSIFIED INFORMATION AND IS NOT TO BE RELEASED TO THE PUBLIC OR TO OTHERS WITHOUT THE WRITTEN CONSENT OF SAMTEC

-MT: MIXED TECHNOLOGY  
DIFFERENT AS SHOWN, OTHERWISE SAME AS ABOVE

ENSPROD ASSEMBLY, SMT  
MMTASM-H

**samtec**

520 PARK EAST BLVD. NEW ALBANY, INDIANA 47150  
PHONE (812) 944-6733 P.O. BOX 1147  
CODE 55332

MADE BY: G.REIDINGER 6-22-92 MMT-1XX-XX-XX-XX-XX-XX-XX SHEET 1 OF 3