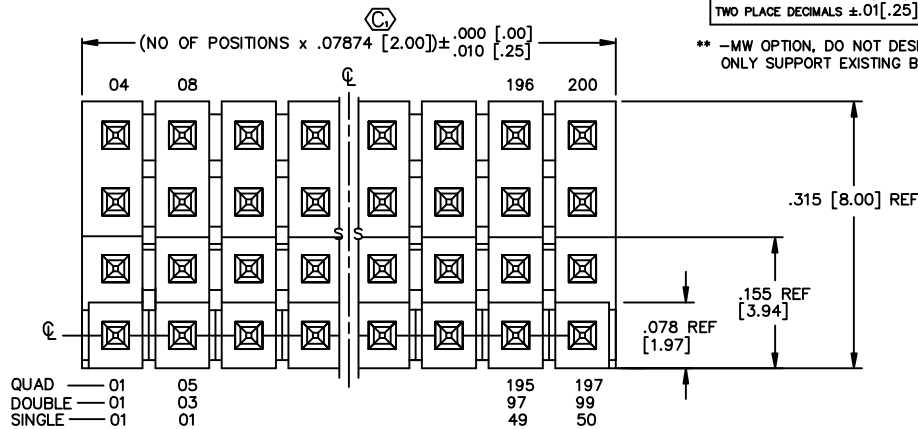


FIG. 1

DIMENSIONS ARE IN INCHES UNLESS OTHERWISE NOTED		TOLERANCES ARE:	TITLE: 2mm TERMINAL STRIP ASSEMBLY	DWG NO: TMM-1XX-XX-XX-X-XX-XXX
ONE PLACE DECIMALS ±.1[2.5]	THREE PLACE DECIMALS ±.005 [.13]	ANGLES ± 2°		
TWO PLACE DECIMALS ±.01[.25]	FOUR PLACE DECIMALS ±.0020[.05]			SHEET 1 OF 2

DO NOT SCALE FROM THIS PRINT



** -MW OPTION, DO NOT DESIGN IN. SAMTEC WILL ONLY SUPPORT EXISTING BUSINESS 2/05/02.

TMM-1XX-XX-XX-X-XX-XXX

NO. OF POSITIONS
-01 THRU -50
TERMINAL SPEC
SEE TABLE 1

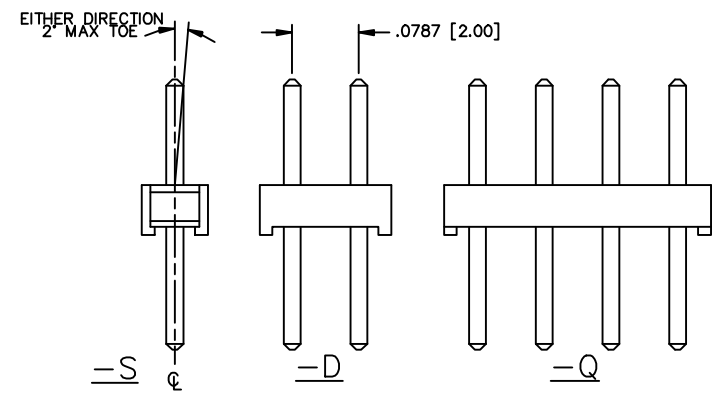
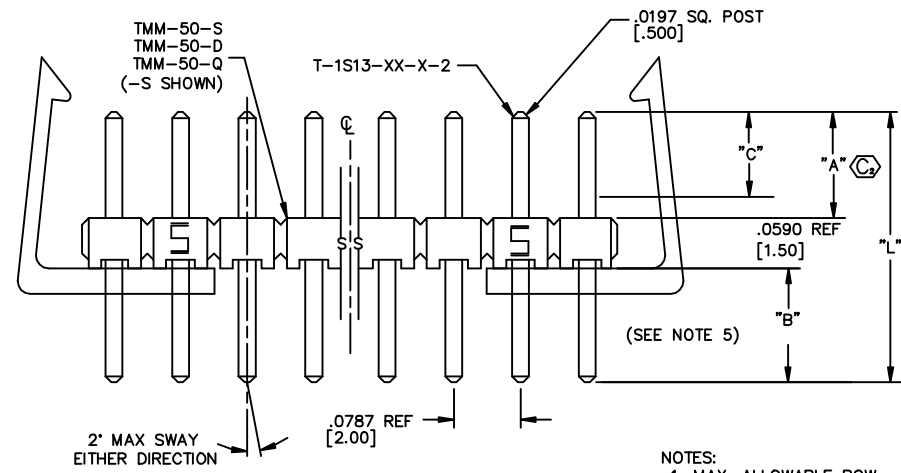
OPTION
POLARIZATION
SPECIFY POS -XXX AS
POS TO BE OMITTED

PLATING SPECIFICATION

- G: GOLD, SPECIFY -G IN TERMINAL SUFFIX -X
- T: TIN, SPECIFY -T IN TERMINAL SUFFIX -X
- S: SELECTIVE, SPECIFY -S IN TERMINAL SUFFIX -X
- L: SELECTIVE, SPECIFY -L IN TERMINAL SUFFIX -X
- F: FLASH SELECTIVE GOLD, SPECIFY -F IN TERMINAL SUFFIX -X
- H: HEAVY GOLD, SPECIFY -H IN TERMINAL SUFFIX -X
- SM: HEAVY GOLD SELECTIVE, MATTE TIN TAIL, SPECIFY -S IN TERMINAL SUFFIX -X
- TM: MATTE TIN SPECIFY -T IN TERMINAL SUFFIX -X
- LM: LIGHT GOLD SELECTIVE, MATTE TIN TAIL SPECIFY -L IN TERMINAL SUFFIX -X
- FM: FLASH GOLD SELECTIVE, MATTE TIN TAIL SPECIFY -F IN TERMINAL SUFFIX -X

OPTION
-MW: METAL WASHER (-D & -Q BODY SPECS ONLY) (SEE FIG. 2, SHT. 2) (30 POS PER ROW MAX) (SEE TABLE 2 PAGE 2)
-RC: RETAINING CLIP FOR IDC USE LTC-09, DOUBLE ROW ONLY. REQUIRES 4 POSITIONS MINIMUM, NOT FOR USE WITH -MW OPTION, SEE NOTES 9 & 10.

BODY SPECIFICATION
-S: SINGLE (TMM-50-S)
-D: DOUBLE (TMM-50-D)
-Q: QUAD (TMM-50-Q)



- NOTES:
1. MAX. ALLOWABLE BOW: .005 IN/IN [mm/mm] AFTER ASSEMBLY.
 2. MAX. PIN ROTATION IN BODY: 2°
 3. PUSHOUT FORCE SHALL BE 1 lb MIN.
 4. Ⓢ REPRESENTS A CRITICAL DIMENSION.
 5. TAIL WILL BE SHEARED ON -04 & -05, REFERENCE TABLE 1.
 6. MAX CUT FLASH .010 [.25].
 7. MAX SHEAR BURR .003 [.08].
 8. ORIENTATE PINS TO PREVENT BANDOLIER MARKS FROM SHOWING IN THE POST AREA. (SEE TABLE 3)
 9. APPROVED FOR WAVE SOLDER APPLICATION ONLY.
 10. RETAINING CLIP FOR -06 LEAD STYLE ONLY.

TABLE 1

SUFFIX	TERMINAL	POST "A" IN. [MM]	TAIL "B" IN. [MM]	CONTACT AREA "C" IN. [MM]	STRAIGHT "L" (OVERALL LENGTH)
-01	T-1S13-20-XX-2	.126 [3.20]	.138 [3.50] REF	.100 [2.54] REF	.323 [8.20] REF
-02	T-1S13-20-XX-2	.146 [3.70]	.118 [3.00] REF	.100 [2.54] REF	.323 [8.20] REF
-03	T-1S13-20-XX-2	.158 [4.00]	.106 [2.70] REF	.100 [2.54] REF	.323 [8.20] REF
-04	T-1S13-20-XX-2	.075 [1.90]	.090±.010 [2.29±.25] (SEE NOTE 5)	.100 [2.54] REF	.323 [8.20] REF "BEFORE SHEAR"
-05	T-1S13-21-XX-2	.065 [1.65]	.090±.010 [2.29±.25] (SEE NOTE 5)	.080 [2.03] REF	.323 [8.20] REF "BEFORE SHEAR"
-06	T-1S13-02-XX-2	.126 [3.20]	.192 [4.88] REF	.100 [2.54] REF	.377 [9.58] REF

PROPRIETARY NOTE
THIS DOCUMENT CONTAINS INFORMATION CONFIDENTIAL AND PROPRIETARY TO SAMTEC INC. AND SHALL NOT BE REPRODUCED OR TRANSMITTED TO OTHER DOCUMENTS OR DISPLAYED TO OTHERS OR USED FOR ANY PURPOSE OTHER THAN THAT FOR WHICH IT WAS OBTAINED WITHOUT THE EXPRESSED WRITTEN CONSENT OF SAMTEC INC.

MATERIAL:
BODIES:
LIQUID CRYSTAL POLYMER
COLOR:BLACK
TERMINALS:
PHOSPHER BRONZE, ALLOY

EXISPROD\ASSEMBLY\2MM TMM-ASM

samtec

520 PARK EAST BLVD. NEW ALBANY, INDIANA 47150
PHONE (812) 944-6733 P.O. BOX 1147
CSCD 55322

MADE BY: REIDINGER 11-2-90

TMM-1XX-XX-XX-X-XX-XXX
SHEET 1 OF 2