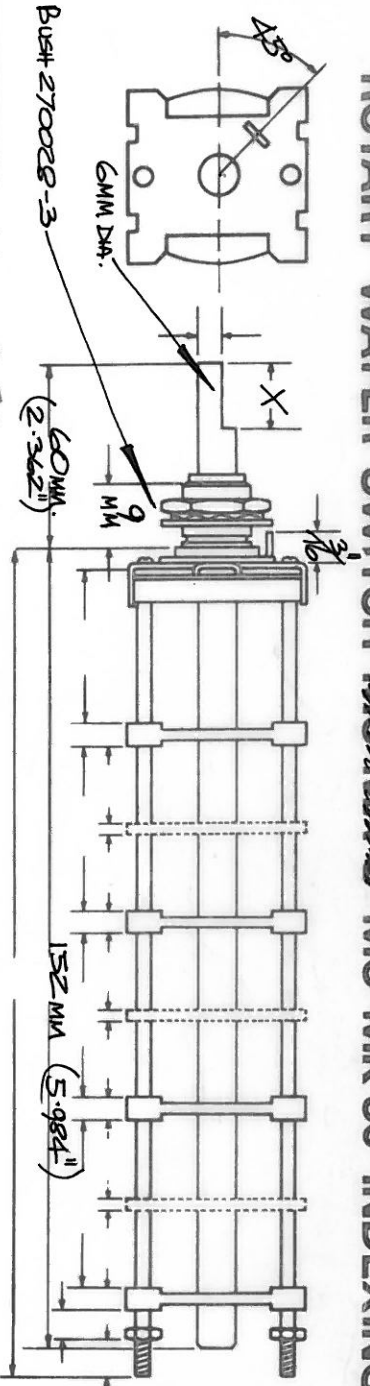


NSF
LIMITED
switches
& controls
KEIGHLEY
YORKSHIRE

ROTARY WAFER SWITCH MU-MK 30° INDEXING



NOTES

PREFERRED MECHANISM TYPE MU. see **MU**
Engineering Data Sheet 101

For STANDARD CONTACT ARRANGEMENTS see Engineering Bulletin 25a & 29a

WAFFER TYPE **MK**

No. of POSITIONS **ADJUSTABLE STEPS.**

No. of WAFFERS **(without shorting)**

SHORTING / NON SHORTING **(12 with shorting)**

TORQUE **STANDARD** **221454-6**

INDEX SPRINGS **HEAVY**

MARKING (if required)

Metric Bush 270028-3.

ADJUSTABLE STEPS 270029-2 & 270029-3.

HOUSING 270015-6.

SUPPLY THE FOLLOWING PARTS WITH EACH MECHANISM :- IN PLASTIC BAG.

2 OFF STUYS 221796-000-152-149

2 OFF NUTS 43080 & WASHERS 043005-12

2 OFF SPACERS 221805 10 MM.

CHANGES

ISSUE DATE **CHANGE**

RAISED: **CHECKED: DATE: 11/9/81**

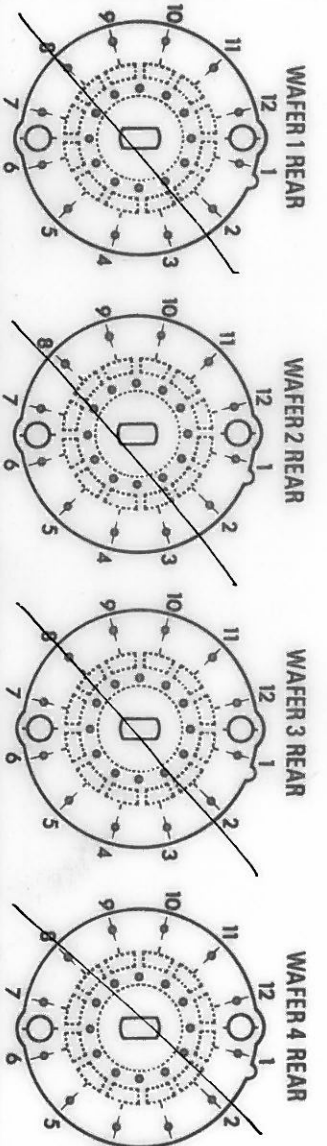
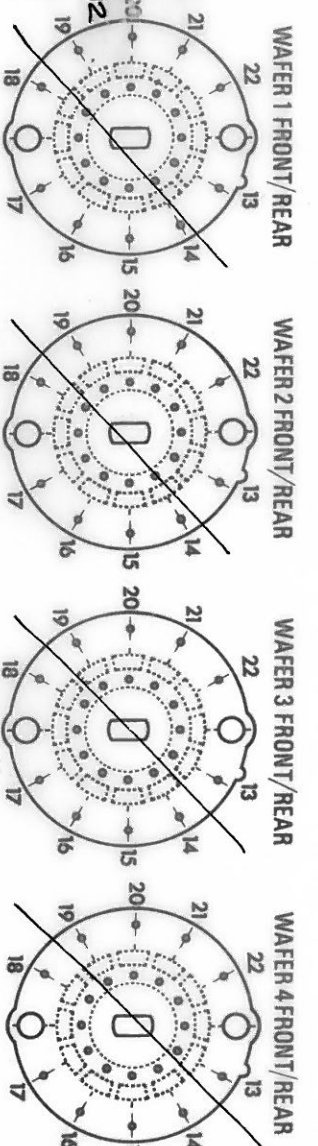
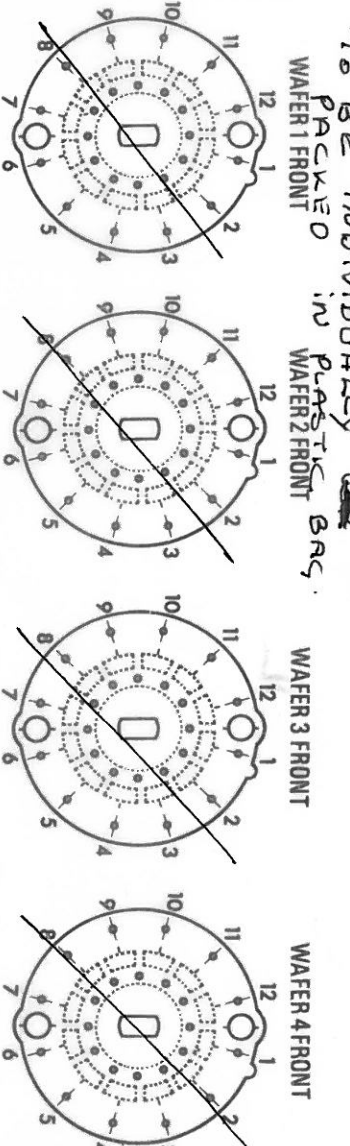
CUSTOMER **ITT ELECTRONIC SERVICES.**

PART No. **MU-MKD.**

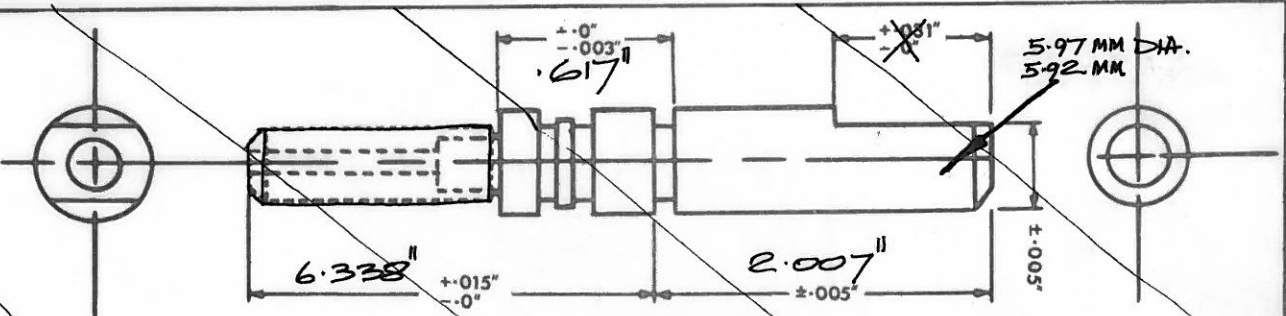
N.S.F. MU 454622 FPA (MK)

SPEC. No.

* FOR SEE NOTE THIS MUST BE DONE IN DESPATCH
TO BE INDIVIDUALLY PACKED IN PLASTIC BAGS.



N.S.F. SPEC. NO. MU 454622 FPA (MK)



ALL OTHER DIMENSIONS AS PER DRAWING