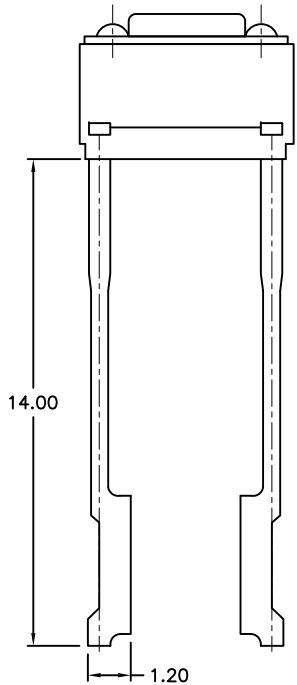
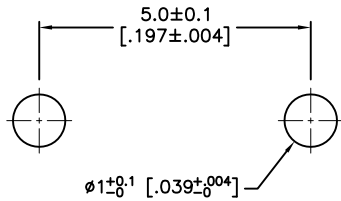


REVISIONS

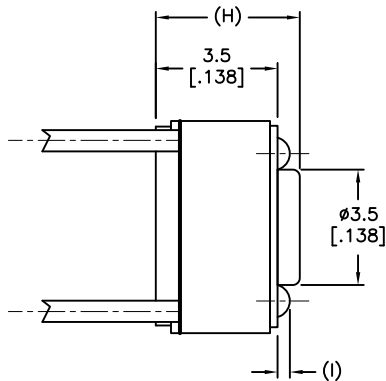
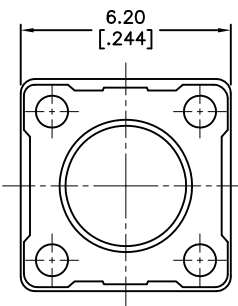
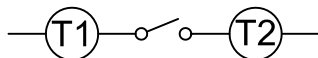
DCP #	REV	DESCRIPTION	DRAWN	DATE	CHECKD	DATE	APPRVD	DATE
2032	A	Released	JN	07/07/09	JWM	07/07/09	JWM	07/07/09



P.C.B. Layout



Circuit Diagram



**SPECIFICATION**

**MECHANICAL**

- Operation Force: See Table
- Stop Strength: Max.3kgf vertical static load continuously for 15 seconds
- Stroke: (6x6) 0.25+0.2mm / -0.1
- Operation Temperature: -25°C to + 70°C
- Storage Temperature: -30°C to +80°C

**ELECTRICAL**

- Electrical Life: 1,000,000 cycles min.
- Rating: 50mA , 12VDC
- Contact Resistance: 100mΩmax.
- Insulation Resistance: 100MΩmin. at 500VDC
- Dielectric Strength: 250VAC / 1 minute
- Contact Arrangement: 1 pole 1 throw

**MATERIALS**

- COVER: Steel
- BASE: UL94V-0 Nylon High-temp Thermoplastic  
Color: Black
- STEM: UL94V-0 Nylon High-temp Thermoplastic  
Color: Black (100gf), Brown (160gf)
- CONTACT DISC: Phosphor bronze with silver cladding.
- TERMINAL: Brass with silver plated.

Mfg. P/N	Dim. H	Dim. I	Operating Force	Color of Stem
MC32879	4.3mm	0.5 [.0197]	100gf	Black
MC32880	5.0mm	0.6 [.0236]		160gf
MC32881				

DISCLAIMER:  
ALL STATEMENTS AND TECHNICAL INFORMATION CONTAINED HEREIN ARE BASED UPON INFORMATION AND/OR TESTS WE BELIEVE TO BE ACCURATE AND RELIABLE. SINCE CONDITIONS OF USE ARE BEYOND OUR CONTROL, THE USER SHALL DETERMINE THE SUITABILITY OF THE PRODUCT FOR THE INTENDED USE AND ASSUME ALL RISK AND LIABILITY WHATSOEVER IN CONNECTION THEREWITH.

TOLERANCES:  
UNLESS OTHERWISE SPECIFIED, DIMENSIONS ARE FOR REFERENCE PURPOSES ONLY.

DRAWN BY:	DATE:
Jason Nash	07/07/09
CHECKED BY:	DATE:
Jeff McVicker	07/07/09
APPROVED BY:	DATE:
Jeff McVicker	07/07/09

DRAWING TITLE:			
<b>Tactile Switch</b>			
SIZE	DWG. NO.	ELECTRONIC FILE	REV
A	Ta-1139	Ta-1139.dwg	A
SCALE:	NTS	U.O.M.: INCHES [mm]	SHEET: 1 OF 1