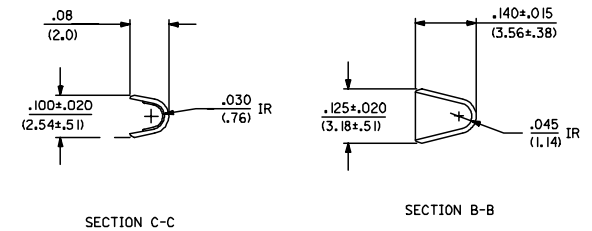
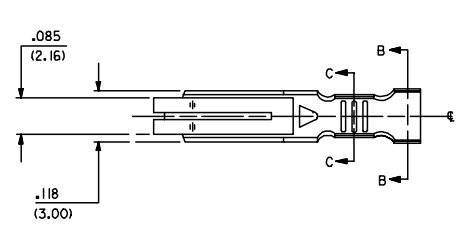


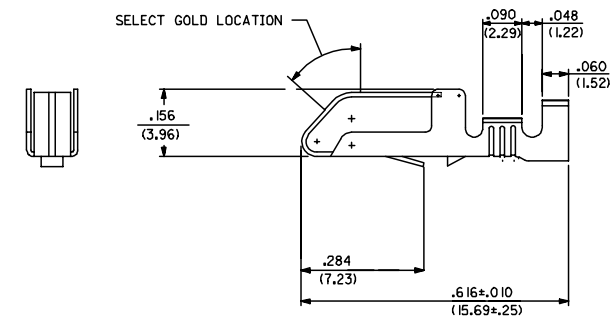
13 12 11 10 9 8 7 6 5 4 3 2 1

EDP NO.	ENG NO.
08-01-0101	I797-AA(P909)
08-01-0102	I797-AA(P909)L
08-06-0101	I797-AA(550)
08-06-0102	I797-AA(550)L
08-05-0103	I797-AA(555)
08-05-0104	I797-AA(555)L
08-03-0101	I797-BA(P909)
08-03-0102	I797-BA(P909)L
08-07-0101	I797-BA(550)
08-07-0102	I797-BA(550)L
- -	I797-BA(555)
- -	I797-BA(555)L



SECTION C-C SECTION B-B

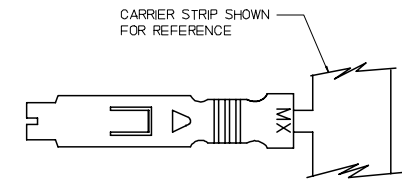
18/24 AWG CRIMP



SELECT GOLD LOCATION

NOTES:

1. MATERIAL: SEE LEGEND
2. FINISH: (P909) - OVERALL HOT TIN DIP: .000100/(0.00254) MIN
(550) - SELECT GOLD: .000015/(0.00038) MIN.
OVERALL GOLD FLASH: .000002/(0.00005) MIN.
OVERALL NICKEL UNDERPLATE: .000030/(0.00076) MIN.
(555) - SELECT GOLD: .000015/(0.00038) MIN.
OVERALL NICKEL UNDERPLATE: .000030/(0.00076) MIN.
- *THE PRIMARY SHIPPING CARTON WILL BE LABELED TO
RoHS DIRECTIVE 2002/95/EC AND ELV ANNEX II OF DIRECTIVE 2000/53/EC*
CARTONS WITHOUT THIS LABEL MAY CONTAIN PRODUCT WITH TIN-LEAD PLATING.
3. PRODUCT SPECIFICATION: PS-08-50
4. TERMINALS AVAILABLE IN CHAIN OR LOOSE FORM. SEE LEGEND.
5. DIMENSIONS GIVEN ACROSS CENTERLINES ARE SYMMETRICAL ABOUT THOSE CENTERLINES WITHIN HALF THE TOTAL TOLERANCE.
6. PART CONFORMS TO CLASS B REQUIREMENTS OF COSMETIC SPECIFICATION PS-45499-002.

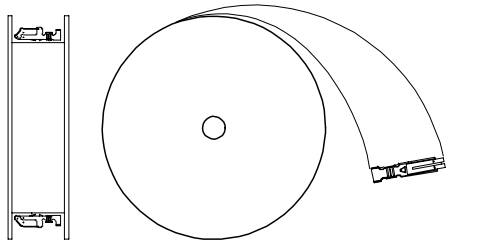


MATERIAL:
A= .011 THK BRASS
B= .011 THK PHOS BRONZE

WIRE SIZE
A=18 TO 24 AWG WIRE (SEE SHEET 1)
INS DIA. .060/.120
B=24 TO 30 AWG WIRE (SEE SHEET 2)
INS DIA. .040/.090
C=16 AWG WIRE (SEE SHEET 2)
INS DIA. .098 MAX

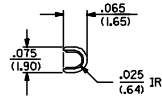
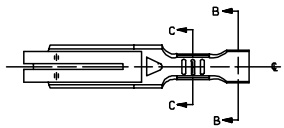
1797- ** (***)*
BLANK=CHAIN
L=LOOSE

PLATING
SEE NOTE 2

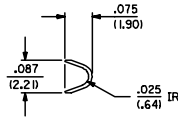


WINDING DIRECTION

UPDATE NOTES ECP NO: UCP2008-0273 DRAWN BY: DRW:ADERR 2007/10/03 CHK'D:LSHMI DT 2007/10/08 APPR:FSM TH 2007/10/09 Y1	QUALITY SYMBOLS ▽=0 ▽=0	GENERAL TOLERANCES (UNLESS SPECIFIED) mm INCH 4 PLACES ± --- ± --- 3 PLACES ± --- ± .010 2 PLACES ± 0.25 ± .02 1 PLACE ± 0.5 ± --- ANGULAR ±1/2°	DIMENSION STYLE IN/MM DRAWN BY: SAMIEC DATE: 1992/08/13 CHECKED BY: ROBERTS DATE: 1992/08/13 APPROVED BY: LENZ DATE: 1992/08/13	SCALE: --- DESIGN UNITS: INCH THIRD ANGLE PROJECTION	SHEET NO. 1 OF 2 SHI REV. 2 Y1 1 Y1
		DRAFT WHERE APPLICABLE MUST REMAIN WITHIN DIMENSIONS	MATERIAL NO. SEE CHART SIZE: C	MOLEX INCORPORATED SD-1797	DOCUMENT NO.



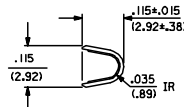
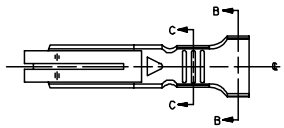
SECTION C-C



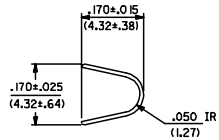
SECTION B-B

24-30 AWG CRIMP

EDP NO.	ENG NO.
08-01-0105	I797-AB(P909)
08-01-0106	I797-AB(P909)L
08-06-0105	I797-AB(550)
08-06-0106	I797-AB(550)L
08-05-0105	I797-AB(555)
08-05-0106	I797-AB(555)L
08-03-0103	I797-BB(P909)
08-03-0104	I797-BB(P909)L
- -	I797-BB(550)
- -	I797-BB(550)L
- -	I797-BB(555)
- -	I797-BB(555)L



SECTION C-C



SECTION B-B

16 AWG CRIMP

EDP NO.	ENG NO.
08-01-0116	I797-AC(P909)
- -	I797-AC(P909)L
- -	I797-AC(550)
- -	I797-AC(550)L
- -	I797-AC(555)
- -	I797-AC(555)L
- -	I797-BC(P909)
- -	I797-BC(P909)L
- -	I797-BC(550)
- -	I797-BC(550)L
- -	I797-BC(555)
- -	I797-BC(555)L

ADD 08-05-0106 DEC NO: UCP2008-0273 DRAWN BY: CHKCLSCHMIDT APPROVED BY: CHKCLSCHMIDT AA1	QUALITY SYMBOLS ▽=0 ▽=0	GENERAL TOLERANCES (UNLESS SPECIFIED)		DIMENSION STYLE IN/MM		SCALE ---	DESIGN UNITS INCH	THIRD ANGLE PROJECTION	
		4 PLACES ± --- ± ---	3 PLACES ± --- ± .010	DRAWN BY SAMIEC	DATE 1992/08/13	TITLE CRIMP TERMINAL BIFURCATED			
		2 PLACES ± 0.25 ± .02	1 PLACE ± 0.5 ± ---	CHECKED BY ROBERTS	DATE 1992/08/13	APPROVED BY LENZ			
		ANGULAR ±1/2°		MATERIAL NO. SEE CHART		DOCUMENT NO. SD-1797		SHEET NO. 2 OF 2	
DRAFT WHERE APPLICABLE MUST REMAIN WITHIN DIMENSIONS				THIS DRAWING CONTAINS INFORMATION THAT IS PROPRIETARY TO MOLEX INCORPORATED AND SHOULD NOT BE USED WITHOUT WRITTEN PERMISSION					