

**Tektronix**



# Tektronix Measurement Solutions



## New TX-DMM™ True RMS Digital Multimeters

### Applications

- Installation and Maintenance of Industrial and Communications Equipment
- Preventive Maintenance Programs
- Manufacturing Process Troubleshooting
- Design Verification and Debug

### WSTRM – Optional PC Interface Package

- WaveStar™ for Meters Software
- Optically-Isolated PC Interface Cable provides communication between TX DMM and PC RS-232 port



## Made in USA

### Save Time and Money without Sacrificing Quality, Safety, or Ruggedness

The TX-DMM family can save you valuable time in the field. Its extra large display with backlight can be viewed from across the room. Making measurements is quick and easy with an innovative single input, single knob location interface. Dual display shows more information in fewer steps — make AC and DC measurements without changing the meter function.

The TX-DMM family provides the features and performance you need in an affordable package. TX-DMM technology provides high accuracy, high resolution, and a wide measurement range as well as fast RMS settling time. Each meter comes in a re-usable clamshell case and includes a traceable calibration certificate. The TX3 adds a built-in digital thermometer and K-type thermocouple probe.



### Accessories

Refer to pages 12 and 13 for the new ATL25 Adjustable Test Lead Set and other meter accessories.

All Tektronix meters have a 3 year warranty.



#### Store It

Error-free data collection is crucial to preventive maintenance programs. Use the TX-DMM MEM function to store up to 30 measurements in the field.

#### Download It

Use WSTRM to automatically download measurements to your PC.

#### Document It

Track and document measurements using WaveStar for Meters software and other Windows® applications.

#### Data Logging

Use a TX-DMM meter with the optional WSTRM PC Interface Package for data logging of temperature (TX3 only), voltage, or current variations on critical circuit components.

Specifications	TX1	TX3
True RMS	Yes	Yes
Backlit Display	Yes	Yes
Display Counts (Selectable)	50,000 and 5,000	50,000 and 5,000
AC, DC, and (AC+DC) Volts and Amps; Resistance, Continuity, Diode Test, Capacitance, Frequency, Duty Cycle	Yes	Yes
Basic DC Volts Accuracy	0.07% + 1Ct	0.05% + 1Ct
MIN/MAX/AVG/MAX-MIN Recording with Time Stamp	Yes	Yes
1 ms Peak Hold	Yes	Yes
Computer Calibrated with "Cal Date" Readout	*Yes	*Yes
Dual Readout	Yes	Yes
Simultaneous AC and DC Readout	*Yes	*Yes
50 $\Omega$ Range with Automatic Lead Calibration	*Yes	*Yes
Non-Volatile Memory Locations	*10	*30
Temperature Measurement (K-Type)	–	*Probe Standard
dBm and dB Readings	–	Yes
4–20 mA Process Loop with % Readout	–	*Yes
Setup Menu with Custom Defaults	Yes	Yes
Safety Certifications	CE, UL, CSA	CE, UL, CSA
Safety Voltage Rating	*1000 V - CATIII	*1000 V - CATIII
Traceable Calibration Certificate Standard	*Yes	*Yes

\*Feature unique to TX digital multimeters.



Safe, easy access allows fast battery replacement without breaking the calibration seal.

Rugged boot with Versa-Stand™ provides a versatile hook-stand for convenient, hands-free operation anywhere.



# Digital Multimeters



Specifications	DMM912	DMM914	DMM916
True RMS	Yes	Yes	Yes
Backlit Display	—	—	Yes
Display Counts (Selectable)	40,000 and 4,000	40,000 and 4,000	40,000 and 4,000
AC, DC, and (AC+DC) Volts and Amps; Resistance, Continuity, Diode Test, Capacitance, Frequency	Yes	Yes	Yes
Duty Cycle	—	Yes	Yes
Basic DC Volts Accuracy (4000 Ct Mode)	0.2% + 1Ct	0.1% + 1Ct	0.06% + 1Ct
Temperature Measurement (K-Type) Probes Sold Separately	—	Yes	Yes
MIN/MAX/AVG/MAX-MIN Recording with Time Stamp	No Time Stamp	Yes	Yes
1mS Peak Hold	—	—	Yes
Average Responding AC Readout	*Yes	*Yes	*Yes
Dual Readout	—	Yes	Yes
dBm and dB Readings	—	—	Yes
Center/Zoom Analog Bar Graph	—	*Yes	*Yes
HI/LO Limits	—	*Yes	*Yes
Delta % Readout	—	*Yes	*Yes
Setup Menu with Custom Defaults	Yes	Yes	Yes
Safety Certifications	CE, UL, CSA	CE, UL, CSA	CE, UL, CSA
Dual Safety Voltage Ratings	600 V – CATIII 1000 V – CATII	600 V – CATIII 1000 V – CATII	600 V – CATIII 1000 V – CATII

\*Feature unique to DMM900

Specifications	DMM249	DMM254	DMM150	DMM157
Display Counts	3200	4000	3200	3200
True RMS	Yes	Yes	—	—
Basic DC Volts Accuracy	0.3% + 2 cts	0.1% + 2 cts	0.7% + 2 cts	0.5% + 2 cts
AC Voltage Ranges	3 – 750 V	400 mV – 750 V	3 – 600 V	3 – 600 V
DC Voltage Ranges	300 mV – 1000 V	400 mV – 1000 V	300 mV – 600 V	300 mV – 600 V
DC Current Ranges	300 $\mu$ A – 20 A	4 mA – 10 A	—	300 $\mu$ A – 10 A
AC Current Ranges	300 $\mu$ A – 20 A	4 mA – 10 A	300 A*	300 $\mu$ A – 10 A
Resistance Ranges	300 $\Omega$ – 30 M $\Omega$	400 $\Omega$ – 40 M $\Omega$	300 $\Omega$ – 30 M $\Omega$	200 $\Omega$ – 20 M $\Omega$
Capacitance Ranges	—	4 nF – 40 $\mu$ F	—	3 – 3000 $\mu$ F
Frequency Ranges	—	100 Hz – 1 MHz	—	—
Analog Bargraph Display	Yes	Yes	Yes	Yes
Diode Test	Yes	Yes	Yes	Yes
Continuity Check	Yes	Yes	Yes	Yes
Safety	IEC, UL, CSA	IEC, UL, CSA	IEC, UL, CSA	IEC, UL, CSA

\* With optional CMM150 clamp probe

## Accessories

See pages 12 – 13

All Tektronix meters have a 3 year warranty.

Specifications	DCM320	DCM910
Display Counts	4000	4000
AC Voltage Ranges	400 – 600 V	—
Frequency	40 – 500 Hz	—
Accuracy	1.20% + 5 cts	—
AC Current Ranges	400 – 600 A	40 – 1000 A
Frequency	50/60 Hz	40 – 400 Hz
Accuracy	1.90% + 5 cts	1.90% + 8 cts
DC Current Ranges	—	400 – 1000 A
Accuracy	—	1.90% + 10 cts
Resistance Ranges	4 – 40 k $\Omega$	—
Accuracy	2.0% + 9 cts	—
Frequency Ranges	—	4 – 10 kHz
Accuracy	—	0.50% + 3 cts
Autoranging	Yes	Yes
True RMS	Yes	Yes
Crest Factor	up to 2.5	up to 3
Continuity Beeper	Yes (<100 $\Omega$ )	—
Hold	Display	Peak Hold
Jaw Size (diameter)	40 mm	51 mm
Safety	IEC, UL, CSA	IEC, UL, CSA
Transducer	Transformer	Hall Effect

### DCM320

#### Features:

- True RMS AC measurements
- Autoranging

#### Applications:

- Troubleshoot plant electrical systems
- Verify building power systems
- Install electrical equipment



### DCM910

#### Features:

- 1000 A rating for industrial measurements
- Hall effect transducer provides accurate DC readings

#### Applications:

- Maintain industrial equipment
- Troubleshoot adjustable speed drives
- Install motor drives

Specifications	DTM900	DTM920
Thermocouples	K	J or K
Channels	1	2
Accuracy (Single Input)	$\pm(0.2\% + 1^{\circ}\text{C})$	$\pm(0.1\% + 0.7^{\circ}\text{C})$
Accuracy (T1-T2)	—	$\pm(0.3\% + 2.2^{\circ}\text{C})$
Resolution	0.1/1 $^{\circ}\text{C}$	0.1/1 $^{\circ}\text{C}$
Temperature Range	-50 to +1300 $^{\circ}\text{C}$	-200 to +1370 $^{\circ}\text{C}$
Measurement Hold	Yes	Yes
Record Max/Min	Yes/No	Yes/Yes
Differential (T1-T2)	—	Yes
Autoranging	—	Yes
Stopwatch	—	Yes
Dimensions (LxWxD)	170 x 74 x 39 mm	170 x 74 x 39 mm
Weight	431 g*	431 g*

\* Includes 131 g holster

### DTM900

#### Features:

- Intuitive layout provides easy access to all functions
- Maximum feature captures extreme measurements

#### Applications:

- Food process monitoring
- Verify heating in electronic components



### DTM920

#### Features:

- Dual-channel and differential temperature measurements
- Stopwatch easily tracks temperature measurements over time
- Intuitive layout provides easy access to all functions

#### Applications:

- Monitoring process control equipment
- Troubleshooting HVAC-R systems

### Accessories

See pages 12 – 13

All Tektronix meters have a 3 year warranty.

# Handheld Digital Oscilloscopes

## Take floating measurements, *not* risks

Using proprietary IsolatedChannel™ architecture, you can safely acquire both channels even when they are referenced to different or dynamically changing potentials. Both oscilloscope channels and DMM are independently isolated.

## Catch glitches

Pulse trigger and a fast sample rate reveal glitches that go undetected with lower sample rates.

## See what really happens

A fast update rate and Digital Real-Time acquisition keep pace with changes, delivering digital precision with an analog look.



The TekScope® THS700 Series combines a Digital Real-Time oscilloscope with a true RMS digital multimeter in a rugged handheld package. Scope and meter modes operate simultaneously or independently on the same or separate signals. Features include: high resolution backlit display, cursors, voltage and resistance measurements, and storage of waveforms, data, and instrument setups.

Specifications	THS710A	THS720A	THS730A
Bandwidth	60 MHz	100 MHz	200 MHz
Sample Rate per Channel	250 MS/s	500 MS/s	1 GS/s
Channels	2	2	2
Digitizers	2	2	2
Record Length	2500 points	2500 points	2500 points
Glitch Capture	8 ns	8 ns	8 ns
Isolated Channels	Yes	Yes	Yes
CE Marked	Yes	Yes	Yes
Standard 10X Probes (2)	P6117	P6117	P6117
Triggering	External, Video, and Pulse Width		
Meter Resolution	4000 counts, 3-3/4 digits		
Maximum Float Voltage	600 V RMS each channel		
DC Volts	Yes	Yes	Yes
True RMS AC Volts	Yes	Yes	Yes
Resistance	Yes	Yes	Yes
Diode Test	Yes	Yes	Yes
Continuity Check	Yes	Yes	Yes

### Accessories

- THS7HCA Hard Carrying Case
- THS7BAT Battery
- THS7CHG Battery Charger
- WSTR31/WSTR31U WaveStar™ Electronic Lab Notebook Software

### Additional accessories

See page 12

### Compatible probes

See pages 12 – 15



The TekScope THS720P with IsolatedChannel™ architecture and built-in DMM is ideal for electric/power electronics applications. The THS720P has all of the THS720A features, plus power and harmonic measurement capabilities to test and verify operation of motors, transformers, power supplies, and the effects of harmonics. The THS720P has specialized triggering for PWM AC motors.



#### Measure harmonic content

The THS720P bar graph displays harmonic content of each of the harmonic frequencies including the fundamental (fundamental frequency from 30 – 450 Hz) up to the 31st.

#### Power measurements made easy

Simply press MATH to display the statistics of the same signal shown above, including Power Factor and other power measurements.

Specifications	THS720P
Bandwidth	100 MHz
Sample Rate per Channel	500 MS/s
Number of Channels	2
Digitizers	2
Record Length	2500 points
Glitch Capture	8 ns
Isolated Channels	Yes
CE Marked	Yes
Harmonics	Yes
Power Measurement and Statistics	Yes
Standard Probes (2) High Voltage	P5102
Triggering	External, Video, Pulse Width, Motor



**Multilingual menus and help**

Display text in English, French, German, Italian, Japanese, Korean, Portuguese, Simplified Chinese, Spanish, and Traditional Chinese.

**Interface modules**

Plug-in modules for printing, communications, and control. Includes WaveStar™ Lite software.

- TDS2HM — Centronics
- TDS2CM — Centronics, GPIB, RS-232-C
- TDS2MM — FFT/Measurements, Centronics, GPIB, RS-232-C



The TDS 200 Digital Real-Time™ oscilloscopes will change the way you think about low-cost oscilloscopes. Compare performance, portability, and value: autotriggering, zoom, automatic measurements, save and recall of waveforms and setups, math functions, and crisp liquid crystal display.

Specifications	TDS 210	TDS 220
Bandwidth	60 MHz	100 MHz
Channels	2	2
Max Sample Rate per Channel	1 GS/s	1 GS/s
Sweep Speeds	5 ns/div – 5 s/div	5 ns/div – 5 s/div
Vertical Accuracy	3%	3%
Vertical Resolution	8 bits	8 bits
Record Length	2.5k points/channel	2.5k points/channel
Vertical Sensitivity	10 mV/div – 5 V/div at full bandwidth, 2 mV/div – 5 mV/div at 20 MHz	
Features	Automatic Measurements, 2 Reference Waveforms, Peak Detect, Autoset, Multi-Language User Interface, 5 Setup Memories, Two P6112 Probes, Certificate of Calibration	

**Accessories**

- AC220 soft carrying case
- RM200 rackmount kit

**Compatible probes**

See pages 13 – 15

The Huntron Tracker® TR210 works with oscilloscopes like the TDS 200 to simplify the troubleshooting of populated circuit boards in a power off condition, including CMOS and MOS circuits. The built-in pulse generator makes it possible to evaluate gate-fired devices such as SCRs, TRIACs, and opto-couplers.

Specifications	Huntron Tracker TR210
Test Frequencies	50 – 60 Hz, 200 Hz, 2 kHz
Functions	Range Selection, High Range Lockout
Compare-A-Trace	0.5 – 10 Hz
Pulse Level	0 – 5 V
DC Mode	+DC or -DC
Pulse Mode	+Pulse, -Pulse, or both
Power Requirement	100 VAC, 115 VAC, 230 VAC; 47 – 63 Hz







### FFT

Analyze signal harmonics; evaluate distortion and symmetry.

### Acquisition modes

Video and edge triggering with 4 acquisition modes: sample, envelope, average, and peak detect.

The TDS 300 Digital Real-Time oscilloscopes offer a wide range of circuit design and test utilities, including FFT analysis. Store waveforms and setups in a wide range of formats and transfer files to your PC using the floppy disk drive or the optional communications interface.

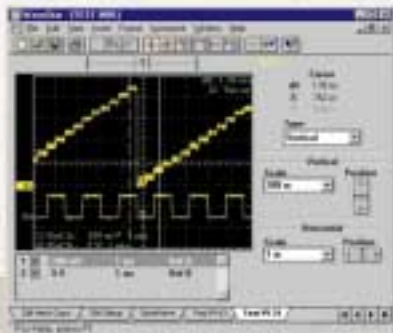
Specifications	TDS 340A	TDS 360	TDS 380
Bandwidth	100 MHz	200 MHz	400 MHz
Sample Rate per Channel	500 MS/s	1 GS/s	2 GS/s
Sweep Speeds	5 ns/div – 5 s/div	2.5 ns/div – 5 s/div	1 ns/div – 5 s/div
Record Length	1k points/channel	1k points/channel	1k points/channel
Standard Probes (2)	P6109B	P6111B	P6114B
Features	TV Line & Field Trigger, Roll Mode, Autoset, Peak Detect, 21 Automatic Measurements, FFT, Disk Drive, Certificate of Calibration		
Option 14	RS-232, GPIB, VGA Monitor Output, Centronics-type Parallel Printer Port		



### Optional WaveStar™ for Oscilloscopes Software

Windows® 95/NT application allows you to capture, analyze, document, and control oscilloscope waveforms and measurements. WaveStar is compatible with all TDS and THS Series oscilloscopes with GPIB or RS-232 interfaces.

- WSTRO — WaveStar for Oscilloscopes, Windows 95/NT version
- WSTROU — Upgrade from WSTR31 to WSTRO
- WSTR31 — Windows 3.1 version



### Accessories

- Soft-sided carrying case (016-1158-01)
- Hard transit case (016-0792-01)
- Deluxe transit case with retractable wheels and handle (016-1157-00)
- Accessory pouch (016-1159-00)
- Front cover (200-3232-01)
- Rackmount kit (016-1166-00)

### Compatible probes

See pages 13 – 15





Expect safe, reliable performance every time you turn on a Tektronix power supply. Proven design and top quality components set these instruments apart from the competition. Choose from manual or programmable models to meet your design, test, or lab requirements.

Specifications	PS2520G	PS2521G
Output Type	Triple	Triple
Voltage Range	0 – 6 V (one) 0 – 36 V (two)	0 – 6 V (one) 0 – 20 V (two)
Maximum Current	3 A (6 V)/1.5 A (36 V)	5 A (6 V)/2.5 A (20 V)
GPIB Programmable	Yes	Yes
Front Panel Programmable	Yes	Yes
Over Voltage Protection	Yes	Yes
Over Current Protection	Yes	Yes
Serial, Parallel Independent Modes	Yes	Yes

	CPS250	PS280
Output Type	Triple	Triple
One Fixed Output/ Maximum Current	5 V 2 A	5 V 3 A
Two Variable Output/ Maximum Current	0 – 20 V 0.5 A	0 – 30 V 2 A
Variable Current Limiting	Yes	Yes
Overload Indicator	Yes	—
Serial, Parallel Independent Modes	—	Yes



### Function Generator Specifications

	CFG253	CFG280
Frequency Range	0.03 Hz – 3 MHz	0.01 Hz – 11 MHz
Output	Sine, Square, Triangle, TTL Pulse	Sine, Square, Triangle, TTL Pulse
Internal or External Sweep	Yes	Yes
Built-In 100 MHz Counter	—	Yes
VFC (FM) Input	—	Yes
AM Input	—	Yes, Ext. sinewave
Sync Out	Yes	Yes

### Counter Specifications

	CMC251
Frequency Range Ch A	1 Hz – 100 MHz
Frequency Range Ch B	80 MHz – 1.3 GHz
Stability	±1 ppm
Sensitivity (RMS)	5 – 35 mV
Period	Yes
Pulse Width	Yes
Totalize	Yes

### DMM Specifications

	CDM250
AC/DC Volts Ranges	200 mV – 500 V
DC Volts Accuracy	0.5% of rdg + 2% of full scale
AC/DC Current Ranges	200 µA – 10 A
Resistance Ranges	200 Ω – 20 MΩ
Display	3-1/2 digit LED
Overrange Indication	Yes



Sony/Tektronix programmable arbitrary function generators output a wide variety of waveforms for design and manufacturing test.

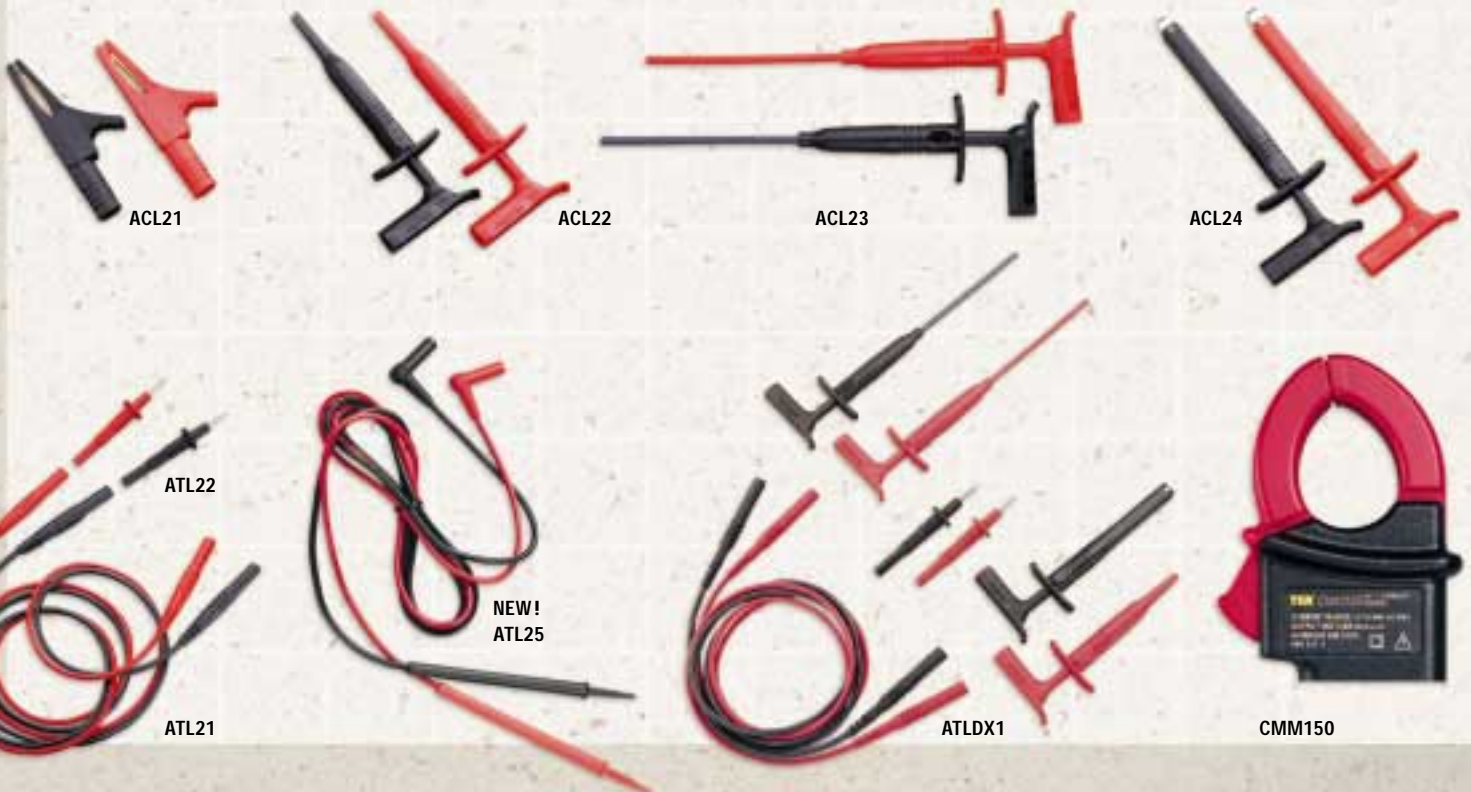
### Specifications

	AFG310	AFG320
Independent Channels	1	2
Frequency Range	10 mHz – 16 MHz	
Arbitrary Waveform Sample Rate	16 MS/s	
Vertical Resolution	12 bits	
Waveform Memory	4 x 16k	
Output Level (50 Ω)	50 mV <sub>P-P</sub> – 10 V <sub>P-P</sub>	
Output Modes	Continuous, Triggered, Burst	
Output Waveforms	Sine, Square, Triangle, Ramp, Pulse, DC, Noise	
Waveform Editing Software	Yes	
Linear/Log Sweep	Yes	
AM/FM/FSK Modulation	Yes	
GPIB Programmable	Yes	



## Handheld Instrument Accessories

Description		DMM100/200	DMM900	TX-DMM	DTM900	DCM320	THS700
ATLDX1	Deluxe Lead Set	•	•	•		•	•
ATL01	Standard DMM Test Leads	•	•	•		•	•
ATL21	Shielded Banana Plug Leads	•	•	•		•	•
ATL22	Test Lead Tips	•	•	•		•	•
ATL23	Sharp "IC" Test Lead Tips	•	•	•		•	•
ATL25	Adjustable Test Lead Set	•	•	•		•	•
ACL21	Alligator Clips	•	•	•		•	•
ACL22	Hook-tip Clips	•	•	•		•	•
ACL23	Wire Clamp Clips	•	•	•		•	•
ACL24	Jaw Clips	•	•	•		•	•
AC11	Soft Case	•			•		
AC12	Large Soft Case		•	•	•		
AC13	Long Soft Case	•	•	•	•	•	
ATK01	Thermocouple Adapter		•	•			
ATP01	Temperature Probe		•	•	•		
A605	AC Current Probe, 500 A	•		•			•
A621	AC Current Probe, 2,000 A		•	•			•
A622	AC Current Probe, 100 A		•	•			•
CMM150	AC Current Clamp Probe, 300 A						
		DMM150 only					



## Probe/Scope Compatibility

Probe Description	TDS 200	TDS 300	THS700
Voltage Passive 1X	P6101B	P6101B	P6101B
Voltage Passive 10X	P6112	P6109B P6111B P6114B	P6117
Voltage Passive 1X/10X	P6119B*	P6129B*	
High Voltage Passive 10X			P5102
High Voltage Passive 100X	P5100	P5100	
High Voltage Passive 1000X	P6015A	P6015A	
Voltage Passive SMD	P6561A	P6562A	
Specialty Logic	P6408	P6408	
Differential High Voltage	P5200	P5200	
Differential ( $\mu$ V)	ADA400A	ADA400A	
Voltage Active Probe	P6243S	P6243S	
Current Measurement AC	P6021 A621	P6021 A621	A605 (DMM) A621 (Scope)
Current Measurement AC/DC	AM503S A622	AM503S A622	A622 (Scope)

\* Not CE Listed

## Current Probes

Specifications	A605	A621	A622	CMM150
Frequency Range	48 Hz to 1 kHz	5 Hz to 50 kHz	DC to 100 kHz	
Maximum Input Current	500 A Peak	2000 A Peak	100 A Peak	300 A AC RMS
Output	1 mV/A	1 mV/A 10 mV/A 100 mV/A	10 mV/A 100 mV/A	1 mV/0.1 A
Maximum Conductor Diameter	30 mm (1.18 inch)	54 mm (2.13 inch)	11.8 mm (0.46 inch)	29 mm (1.14 inch)
Connector Type	Shielded Banana	BNC (BNC to Shielded Banana Adapter)	BNC (BNC to Shielded Banana Adapter)	
Instrument Compatibility	DMM	DMM, THS700	DMM, THS700	DMM150

## Current Probe Systems

Specifications	AM503S with A6302 Probe	AM503S with A6303 Probe	AM503S with A6304XL Probe
Bandwidth	50 MHz*	15 MHz	2 MHz
Maximum Continuous	20 A	100 A	500 A
Peak Pulse	50 A	500 A	700 A
Cable Length	2 m	2 m	8 m

\* 100 MHz with optional A6312 Probe





1103



P6243



P5102

## Active Probes

Specifications	P6201	P6202A	P6205	P6243*
Attenuation	1X/10X/100X	10X/100X	10X	10X
Bandwidth at -3 dB	900 MHz	500 MHz	750 MHz	1 GHz
DC Offset Range	±5.6/56/200 V	±55/200 V	N/A	N/A
System Input Resistance	100 kΩ/1 MΩ/1 MΩ	10 MΩ	1 MΩ	1 MΩ
Typical Input C	3/1.5/1.5 pF	2/2 pF	2 pF	< 1 pF
Maximum Voltage	±100/200 V	±200/200 V	±40 V	±40 V
Probe Power Supply for 2205, TAS, and TDS 300 Scopes	1101A	1101A	1103	1103

\* P6243S includes two P6243 probes and one 1103 TEKPROBE® Power Supply.

## Probe Power Supplies

Probe power supplies provide external power to probes when the oscilloscope does not.

Specifications	1103	1101A
Probes	ADA400A, P5205, P6204, P6205, P6217, P6243, P6245	P6201, P6202A
Probe Inputs	2	2
BNC Outputs	2	—
TEKPROBE™ Interface	Yes	—
Voltage Offset Switches	2	—
Potentiometers	2	—
Overload Protection	Yes	Yes
Scope Compatibility	TDS 200, TDS 300, 2205, TAS 200	

## Passive Voltage Probes

Specifications	P6101B	P6103B	P6109B	P6111B	P6112	P6114B
Bandwidth (MHz)	15	60	100	200	100	400
Attenuation	1X	10X	10X	10X	10X	10X
Compensation Range	N/A	15 – 35 pF	15 – 35 pF	15 – 35 pF	15 – 35 pF	15 – 35 pF
Readout	—	—	Yes	Yes	—	Yes
Scope Compatibility	All	All	TDS 300/TDS 400A	TDS 360	TDS 200	TDS 380

\* Not CE Listed

P6015A



P6112



## Passive High Voltage Probes

Specifications	P5100	P5102	P6015A
Attenuation	100X	10X	1000X
Bandwidth	250 MHz	100 MHz	75 MHz
Loading	10 MΩ/2.75 pF	5 MΩ/11.2 pF	100 MΩ/3 pF
DC Maximum	2.5 kV	1.0 kV	20 kV
Length	10 ft (≈ 3 m)	2 m (≈ 6.6 ft)	10 ft (≈ 3 m)
Comp. Range	7 – 30 pF	24 – 28 pF	7 – 49 pF
Readout	Yes	No	Option 1R

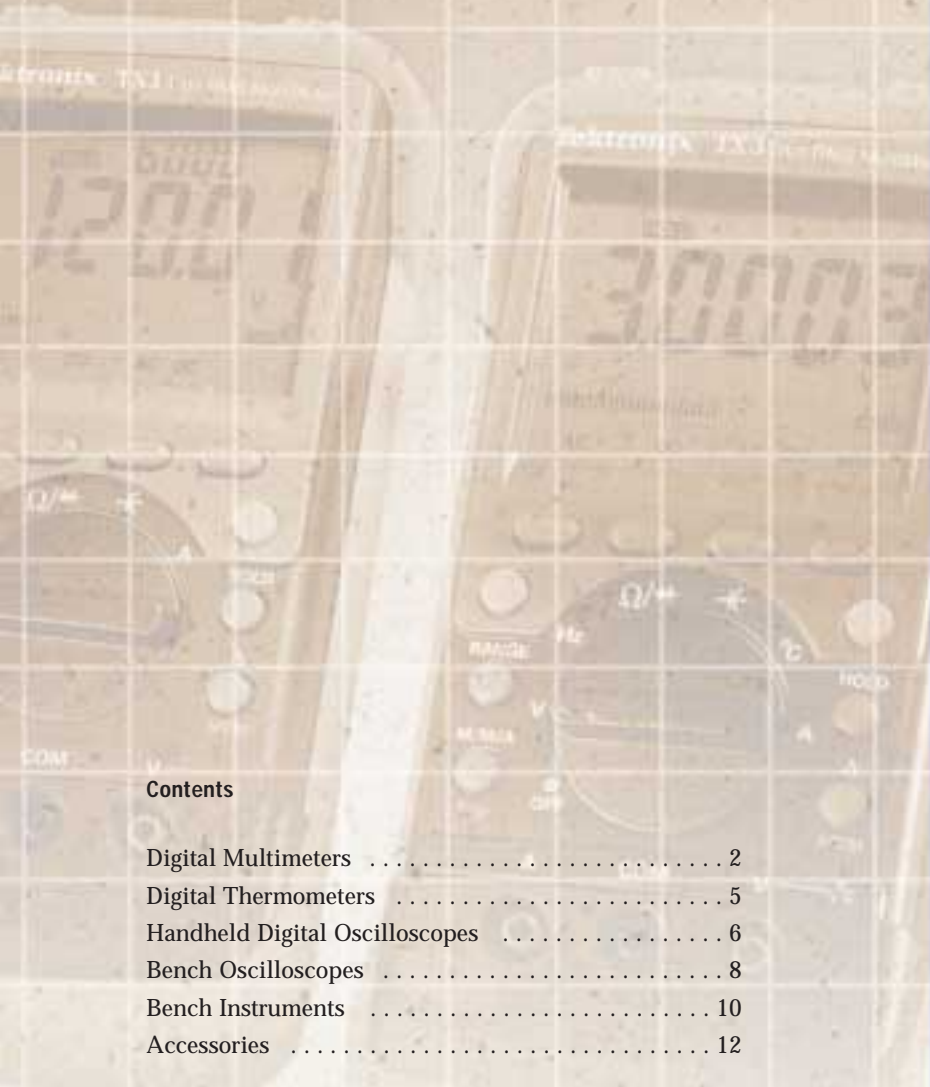
## Active Differential Probes

Specifications	P5200	P5205	ADA400A
Attenuation	50X/500X	50X/500X	N/A
Gain	N/A	N/A	0.1X, 1X, 10X, 100X
Bandwidth	25 MHz	100 MHz	1 MHz
Bandwidth Filters	N/A	N/A	100 Hz, 3 kHz, 100 kHz
Maximum Input Differential Voltage ( $V_{DM}$ )	1300 V (DC + peak AC)	1300 V (DC + peak AC)	± 80 V @ 0.1X, ± 10 V @ 1X, ± 1 V @ 10X, ± 100 mV @ 100X
Maximum Input Voltage to Ground ( $V_{CM}$ )	1000 V (DC + peak AC)	1000 V (DC + peak AC)	± 40 V @ 0.1X, ± 40 V @ 1X, ± 10 V @ 10X, ± 10 V @ 100X
Input R (each input)	4 MΩ	4 MΩ	1 MΩ, selectable ∞ Ω mode
Input C (each input)	7 pF	7 pF	55 pF
CMRR (Common Mode Rejection Ratio)	80 dB (10,000:1) @ 60 Hz; 50 dB (1,000:1) @ 100 kHz	50 dB (1,000:1) @ 1 MHz	> 100 dB (100,000:1) @ 10 kHz; > 90 dB (30,000:1) @ 100 kHz
Cable Length	1.8 m (6 ft)	1.8 m (6 ft)	2 m (6.6 ft)
Operating Power	AC power adapter included	TEKPROBE power interface	TEKPROBE power interface



P6117	P6119B*	P6129B*	P6561A	YT5100*	YT5060*
200	10/100	10/100	200	100	60
10X	1X/10X	1X/10X	10X	1X/10X	1X/10X
15 – 35 pF	15 – 35 pF	15 – 35 pF	15 – 35 pF	20 – 45 pF	20 – 45 pF
—	—	Yes	Yes	—	—
THS700	TDS 300/TAS 200	All	TDS 300/TAS 400	All	All





**Contents**

Digital Multimeters ..... 2

Digital Thermometers ..... 5

Handheld Digital Oscilloscopes ..... 6

Bench Oscilloscopes ..... 8

Bench Instruments ..... 10

Accessories ..... 12

**For further information,  
contact Tektronix:**

<b>ASEAN Countries</b> (65) 356-3900	<b>Japan</b> (Sony/Tektronix Corporation) 81 (3) 3448-3111
<b>Australia &amp; New Zealand</b> 61 (2) 888-7066	<b>Mexico, Central America, &amp; Caribbean</b> 52 (5) 666-6333
<b>Austria, Eastern Europe, &amp; Middle East</b> +43 2236 8092 0	<b>The Netherlands</b> +31 23 56 95555
<b>Belgium</b> +32 (2) 715.89.70	<b>Norway</b> +47 22 07 07 00
<b>Brazil and South America</b> 55 (11) 3741-8360	<b>People's Republic of China</b> 86 (10) 6235 1230
<b>Canada</b> 1 (800) 661-5625	<b>Republic of Korea</b> 82 (2) 528-5299
<b>Denmark</b> +45 (44) 850 700	<b>South Africa</b> (2711) 651-5222
<b>Finland</b> +358 (9) 4783 400	<b>Spain &amp; Portugal</b> +34 (1) 372 6000
<b>France &amp; North Africa</b> +33 1 69 86 81 81	<b>Sweden</b> +46 (8) 629 6503
<b>Germany</b> +49 (221) 94 77 400	<b>Switzerland</b> +41 (41) 729 36 40
<b>Hong Kong</b> (852) 2585-6688	<b>Taiwan</b> 886 (2) 722-9622
<b>India</b> (91) 80-2275577	<b>United Kingdom &amp; Eire</b> +44 (0) 1628 403400
<b>Italy</b> +39 (2) 25086 501	<b>USA</b> 1 (800) 426-2200

**From other areas, contact:**

Tektronix, Inc. Export Sales  
 P.O. Box 500, M/S 50-255  
 Beaverton, Oregon 97077-0001 USA  
 1 (503) 627-6877

Visit our World Wide Web site:  
<http://www.tek.com>



Copyright © 1998, Tektronix, Inc. All rights reserved. Tektronix products are covered by U.S. and foreign patents, issued and pending. Information in this publication supersedes that in all previously published material. Specification and price change privileges reserved. TEKTRONIX, TEK, TEKPROBE, and TekScope are registered trademarks and TX-DMM, Versa-Stand, Digital Real-Time, WaveStar, and IsolatedChannel are trademarks of Tektronix, Inc. All other tradenames referenced are the service marks, trademarks, or registered trademarks of their respective companies.