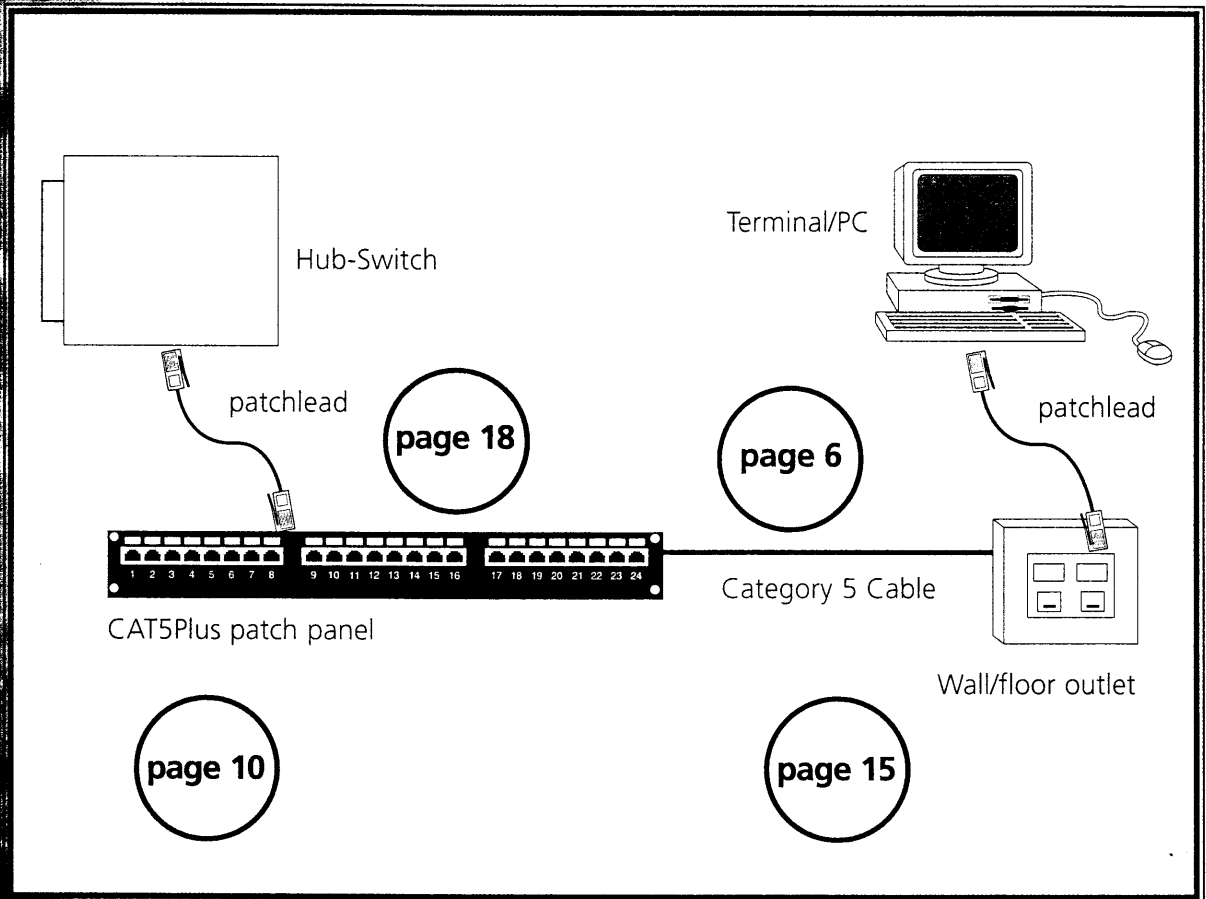
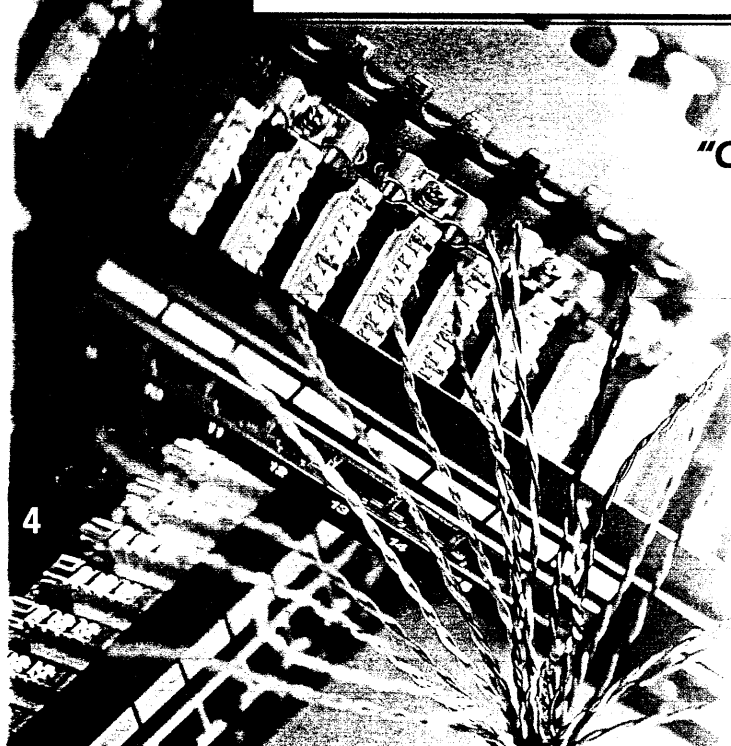


CAT5Plus Category 5 Structured Cabling System



"CAT5Plus comprises a full range of cables, patch panels, outlets, cross connect, baluns and accessories"



M MILLENNIUM

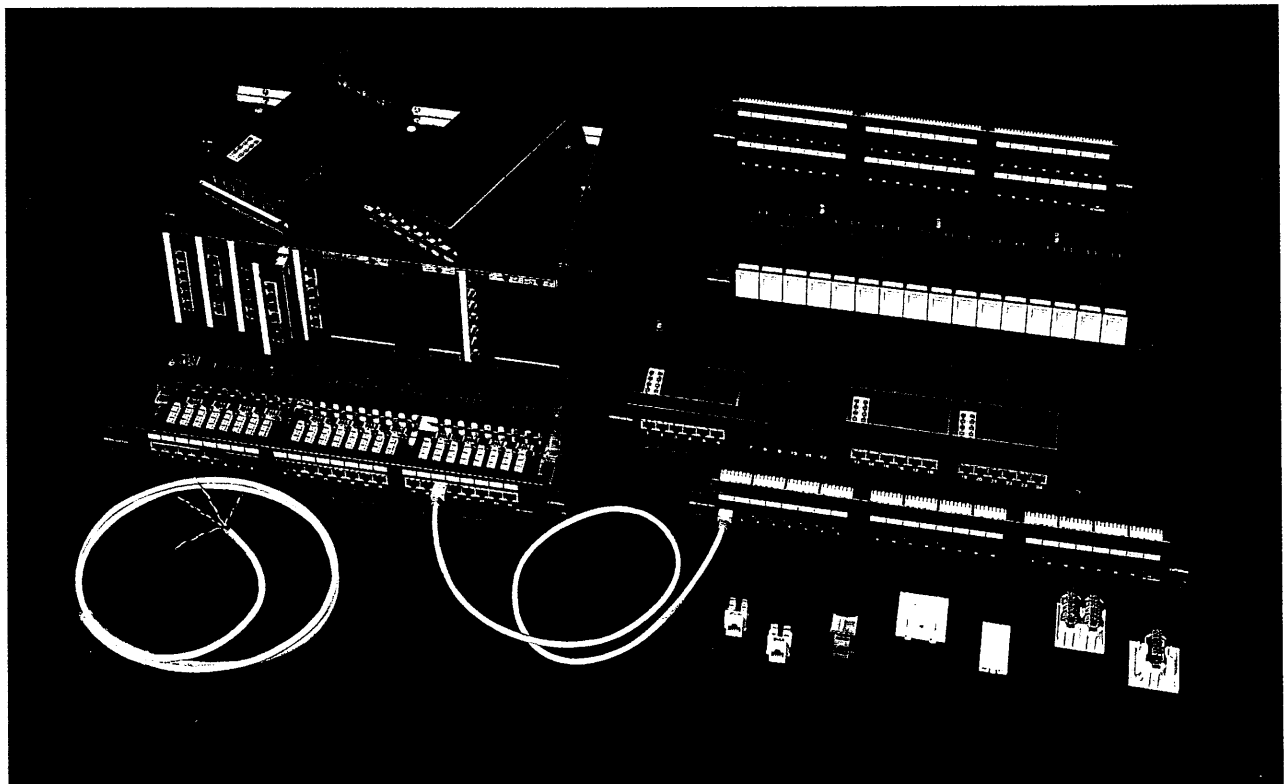
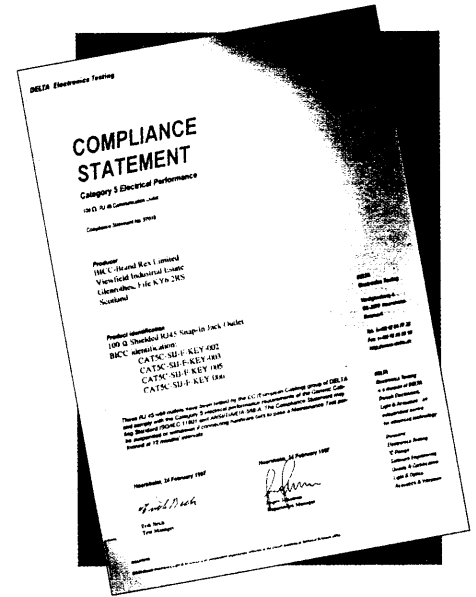
CAT5Plus

CAT5Plus is the copper cabling system within the overall Millennium Structured Cabling System.

CAT5Plus is unique in that it offers screened and unscreened products in every combination - unscreened twisted pair (UTP), foil-screened twisted pair (FTP) and foil-and-braid-screened twisted pair (S-FTP) cables - plus all patch panels and data jacks are available with a choice of '110' or 'LSA' style punch-down IDCs.

The CAT5Plus cables are available sheathed in PVC or a choice of zero halogen, low smoke and low flammability (LSF/OH) materials to IEC 332-1 or IEC 332-3-C.

All the patch panels are available in standard 19" rack mount format and the data jacks are of the universal 'keystone' style to allow fitting in most countries.



CATEGORY 5 4PAIR CABLES

24 AWG solid conductors, polyolefin insulated with a choice of sheath materials.

Millennium C5 is a high performance Category 5 cable from BICC Brand-Rex. It easily exceeds the performance requirements of ISO 11801, EN 50173 and TIA/EIA 568A. There is also sufficient ACR available to ensure reliable operation of high speed mixed protocol LANs, and low delay and differential delay to ensure no problems with Fast Ethernet, and ATM 155.

CHARACTERISTICS

- Impedance: 100 Ohms \pm 15
 - Overall Delay < 535 ns/100m @ 100MHz
 - Standard colour Grey RAL 7037
 - Differential Delay < 40 ns/100m @ 100MHz
 - Environment: indoors
- Temperature Range:
- storage -40 +70°C
 - install 0 +50°C
 - operating -20 +70°C

stay one step ahead of the standards

Category 5 standard				Typical NEXT performance of Millennium C5
Freq. MHz	Atten. dB/100m	NEXT dB	ACR dB	
1	2.1	62	59.9	
4	4.3	53	48.7	
10	6.6	47	40.4	
16	8.2	44	35.8	
20	9.2	42	32.8	
31.25	11.8	40	28.2	
62.5	17.1	35	17.9	
100	22	32	10	

O/D* mm Weight* kg/km

*nominal values

UNSCREENED

C5U

PVC sheath to IEC 332-1 4.8 29.9

C5U HF1

LSF/OH sheath to IEC 332-1 4.8 30.5

C5U HF3

LSF/OH sheath to IEC 332-3c 5.8 44

packing: 305, 500m boxes or 305, 500 or 1000m reels



FOIL SCREENED

C5F

PVC sheath to IEC 332-1 5.9 38.3

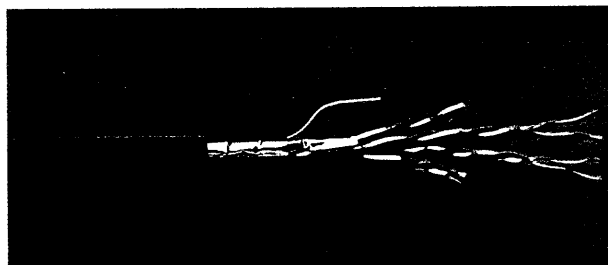
C5F HF1

LSF/OH sheath to IEC 332-1 5.9 40.3

C5F HF3

LSF/OH sheath to IEC 332-3c 6.5 49.7

packing: 305m boxes or 305, 500 or 1000m reels



FOIL AND BRAID SCREENED

C5S

PVC sheath to IEC 332-1 6.1 49.1

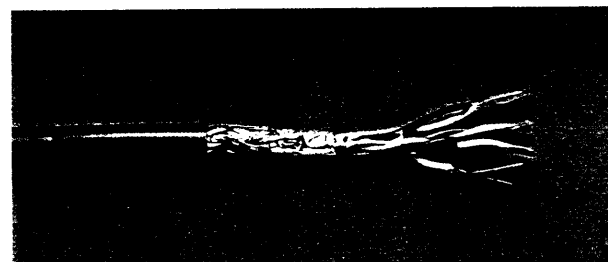
C5S HF1

LSF/OH sheath to IEC 332-1 6.1 51.1

C5S HF3

LSF/OH sheath to IEC 332-3c 6.7 60

packing: 305, 500 or 1000m reels



CATEGORY 5 4PAIR PATCH CABLES



26 AWG 7/0.16mm stranded conductors, polyolefin insulated with a choice of sheath materials.

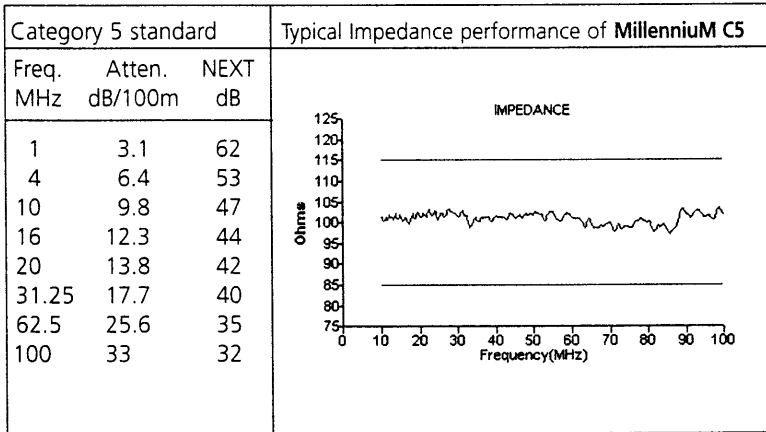
The superior balance and low return loss ensures guaranteed long or short-length performance when using high speed LANs.

CHARACTERISTICS

- Impedance: 100 Ohms ± 15
- Overall Delay < 535 ns/100m @ 100mhz
- Standard colour Grey RAL 7035
- Differential Delay < 40 ns/100m @ 100mhz
- Environment: indoors

Temperature Range:

- storage -40 +70°C
- install 0 +50°C
- operating -20 +70°C

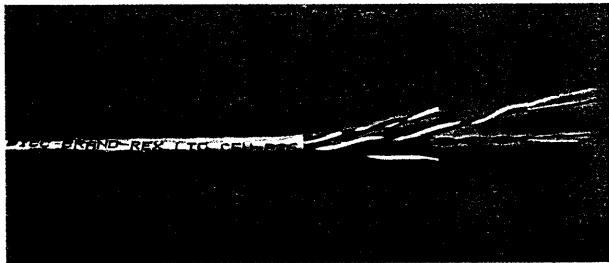


stay one step ahead of the standards

*nominal values

O/D*
mm

Weight*
kg/km



UNSHIELDED

C5U-P26

PVC sheath to IEC 332-1

4.3

22.8

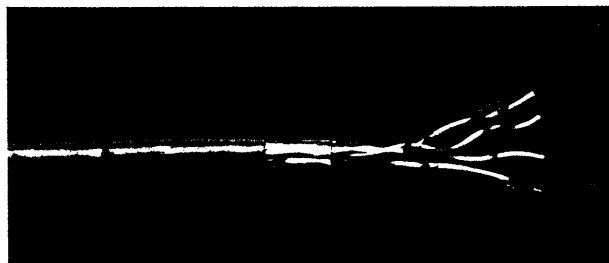
C5U-P26 HF1

LSF/OH sheath to IEC 332-1

4.5

24

packing: 305, 500 or 1000m reels



FOIL SCREENED

C5F-P26

PVC sheath to IEC 332-1

5.0

27

C5F-P26 HF1

LSF/OH sheath to IEC 332-1

5.2

30

packing: 305, 500 or 1000m reels



FOIL AND BRAID SCREENED

C5S-P26

PVC sheath to IEC 332-1

5.4

33.7

C5S-P26 HF1

LSF/OH sheath to IEC 332-1

5.8

35

packing: 305, 500 or 1000m reels

DUPLEX AND MULTI-WAY CATEGORY 5 CABLES

24 AWG, solid conductors, polyolefin insulated with a choice of sheath materials and pair count.

High performance, high pair count Category 5 cables constructed from 4 pair cable units

CHARACTERISTICS

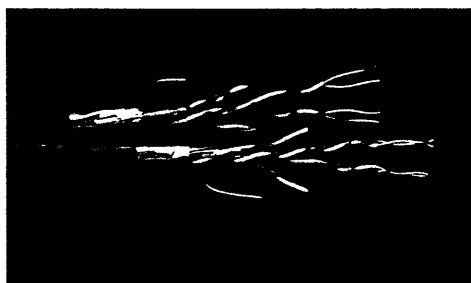
- Impedance: 100 Ohms ±15
- Overall Delay < 535 ns/100m @ 100MHz
- Standard colour Grey RAL 7037
- Differential Delay < 40 ns/100m @ 100MHz
- Environment: indoors

Temperature Range:

- storage -40 +70°C
- install 0 +50°C
- operating -20 +70°C

Category 5 standard				Typical NEXT performance of MILLENNIUM C5
Freq. MHz	Atten. dB/100m	NEXT dB	ACR dB	
1	2.1	62	59.9	
4	4.3	53	48.7	
10	6.6	47	40.4	
16	8.2	44	35.8	
20	9.2	42	32.8	
31.25	11.8	40	28.2	
62.5	17.1	35	17.9	
100	22	32	10	

DUPLEX
Two C5 units extruded together to form a duplex figure of eight construction



part no. (example): C5 U - HF1 - D

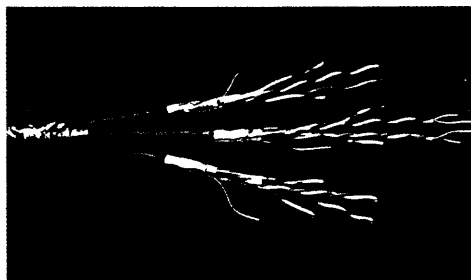
(Unscreened) U
(Foil screened) F
(Foil and braid screened) S

(PVC Sheath) blank
(LSF/OH sheath to IEC 332-1) HF1
(LSF/OH sheath to IEC 332-3c) HF3

duplex

packing: 500 or 1000m reels.

MULTIWAY/LOOMED
Each unit is sheathed with PVC or LSF/OH material and individually numbered for identification purposes. The required number of 4 pair units are either tape loomed or oversheathed with the same material as the component cables.



part no. (example): C5 U - 8 W L

(UTP) U
(FTP) F
(S-FTP) S

(PVC unit) blank
(LSF/OH unit to IEC 332-1) HF1
(LSF/OH unit to IEC 332-3c) HF3

No. of 4 pair units cabled up.

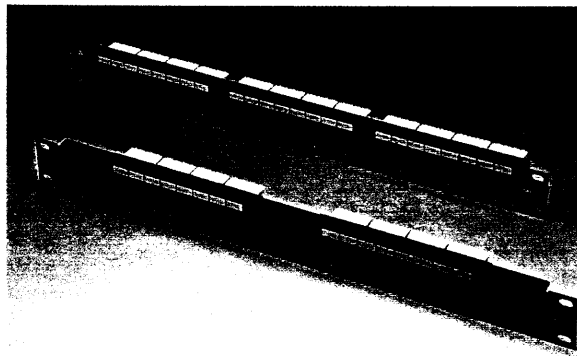
(extruded over sheath) blank
(loomed with polyester tape) L

Typical Dimensions	O/D mm	Weight kg/km
C5U-4W	13.7	178
C5U-6W	17.2	272
C5U-8W	18.8	346

eg: C5U-8WL = 8 four pair UTP units with individual PVC sheath, loomed with polyester tape.

packing: 500m reels as standard.

Rack mounted, 19 inch patch panels, in 1 or 2 U heights. Choose between 110 or LSA Insulation Displacement Connectors (IDCs), and 568A or 568B wiring. Standard packing is one per box complete with panel mounting kit, cable ties and an installation guide. Grey panels are available as an option and are coded 101 instead of the reference 001 in the part number. For 'A' wiring change the last letter of the part number from 'B' to 'A'.

**1U 16 & 24 WAY PATCH PANELS****CAT5C-PAT-16-U-1-001B**

16 port 1U panel, 110 IDCs, 568B wired, black

CAT5C-PAT-16-U-K-001B

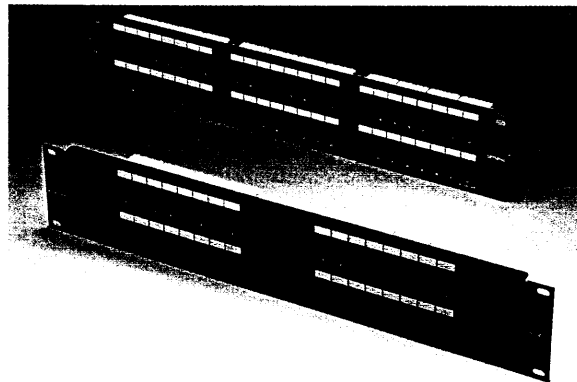
16 port 1U panel, LSA IDCs, 568B wired, black

CAT5C-PAT-24-U-1-001B

24 port 1U panel, 110 IDCs, 568B wired, black

CAT5C-PAT-24-U-K-001B

24 port 1U panel, LSA IDCs, 568B wired, black

**2U 32 & 48 WAY PATCH PANELS****CAT5C-PAT-32-U-1-001B**

32 port 2U panel, 110 IDCs, 568B wired, black

CAT5C-PAT-32-U-K-001B

32 port 2U panel, LSA IDCs, 568B wired, black

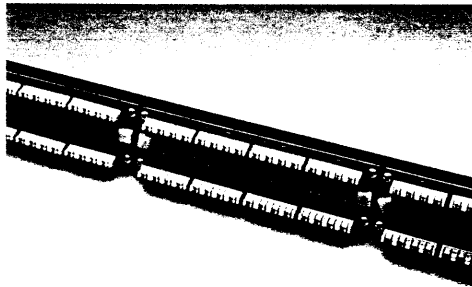
CAT5C-PAT-48-U-1-001B

48 port 2U panel, 110 IDCs, 568B wired, black

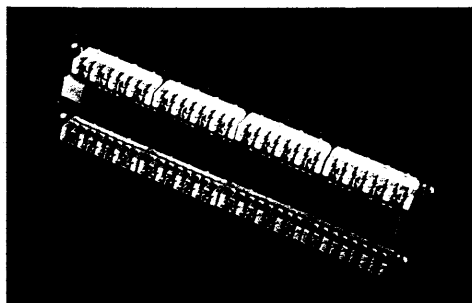
CAT5C-PAT-48-U-K-001B

48 port 2U panel, LSA IDCs, 568B wired, black

Rear of 110 patch panel



Rear of LSA patch panel



SCREENED RJ45 PATCH PANELS



Rack mounted, 19 inch patch panels, in 1U height with easy release rear screen cover, LSA Insulation Displacement Connectors (IDCs), and 568A or 568B wiring. Standard colour is black for 568B wiring and grey (RAL 7035) for 568A wiring. Standard packing is one per box complete with panel mounting kit, cable ties and an installation guide.

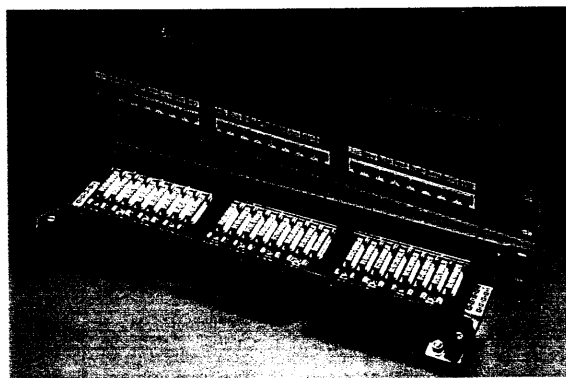
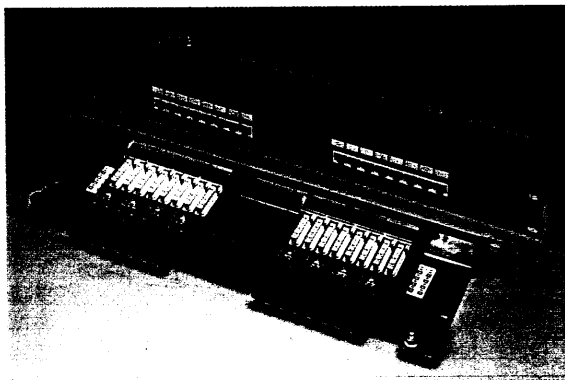
1U 16 WAY PATCH PANELS

CAT5C-PAT-16-F-K-001B

16 port 1U panel, LSA IDCs,
568B wired, black

CAT5C-PAT-16-F-K-101A

16 port 1U panel, LSA IDCs,
568A wired, grey RAL 7035



1U 24 WAY PATCH PANELS

CAT5C-PAT-24-F-K-001B

24 port 1U panel, LSA IDCs,
568B wired, black

CAT5C-PAT-24-F-K-101A

24 port 1U panel, LSA IDCs,
568A wired, grey RAL 7035

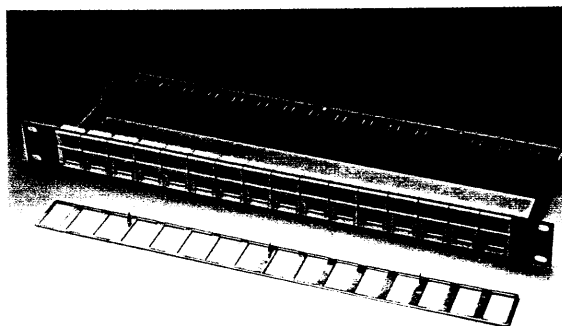
MODULAR 16 WAY 1U PANEL

CAT5C-PAT-16-06C-001

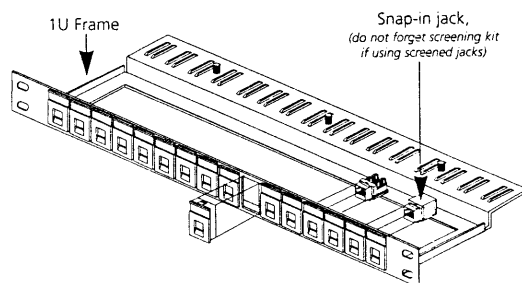
1U frame with 16 06C shuttered
modules Colour black is suffix
001, grey is 101

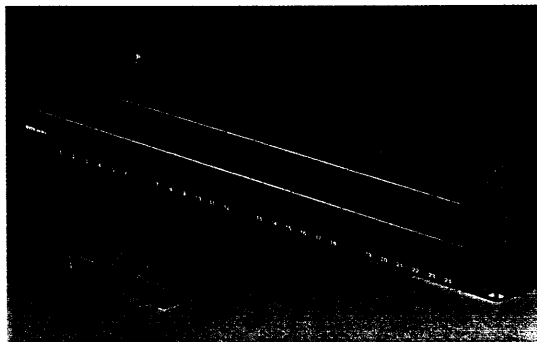
CAT5C-SKIT-16-06C-001

screening kit, needed when
using screened snap-in jacks



A modular 1U panel with cable management that accepts up to 16 screened or unshielded snap-in jacks, with shutters protecting the RJ45 at the front. For screened snap-in jacks a screening kit is also required.





1U PATCH PANEL FRAME

CAT5C-MDPAT-1U-101

basic 1U frame with 4 slots, grey

CAT5C-MDPAT-1U-001

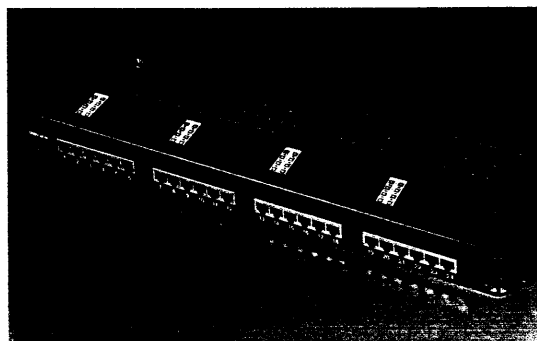
basic 1U frame with 4 slots, black

CAT5C-MDBLK-1U-101

1U blank plate for unused slot, grey

CAT5C-MDBLK-1U-001

1U blank plate for unused slot, black



1U 24 WAY FULLY LOADED PATCH PANEL

CAT5C-MDPAT-24-F-K-101

24 port screened 1U panel, grey

CAT5C-MDPAT-24-F-K-001

24 port screened 1U panel, black

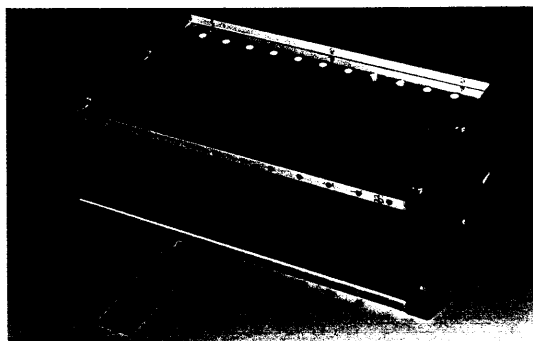
CAT5C-MDPAT-24-U-K-101

24 port unscreened 1U panel, grey

CAT5C-MDPAT-24-U-K-001

24 port unscreened 1U panel, black

3U rack mounted 19 inch patch panel. Takes modular 6 way RJ45 units as well as ST or SC optical fibre units. The 6 way RJ45 modular units can be slotted into the main chassis making installation quick and reliable. Insulation Displacement Connectors (IDCs) are LSA style.



3U MODULAR FRAME

CAT5C-MDPAT-3U-101

3U modular frame for 12 carriers. Up to 72 copper or 96 fibre terminations, grey

CAT5C-MDPAT-3U-001

3U modular frame for 12 carriers. Up to 72 copper or 96 fibre terminations, black

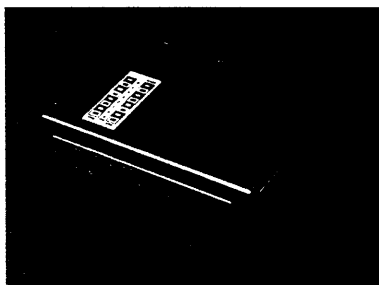
CAT5C-MDBLK-101

blank panel for the 3U frame, grey

CAT5C-MDBLK-001

blank panel for the 3U frame, black

MODULES

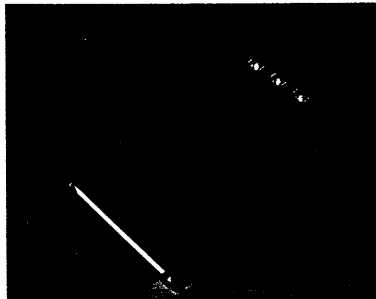


CAT5C-MD645-F-K-001

6 port screened module

CAT5C-MD645-U-K-001

6 port unscreened module

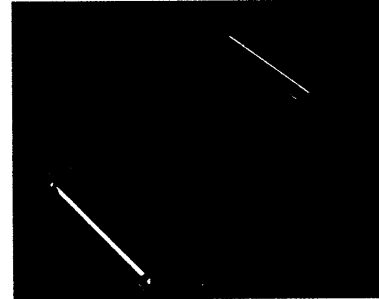


CAT5C-MDT645-101

carrier for 6 port copper modules, grey

CAT5C-MDT645-001

carrier for 6 port copper modules, black



CAT5C-MDT8ST-101

carrier for 8 x ST couplers, grey

CAT5C-MDT8ST-001

carrier for 8 x ST couplers, black

CAT5C-MDT6ST-101

carrier for 6 x ST couplers, grey

CAT5C-MDT6ST-001

carrier for 6 x ST couplers, black

CAT5C-MDT6DC-101

carrier for 3 duplex SC couplers, grey

CAT5C-MDT6DC-001

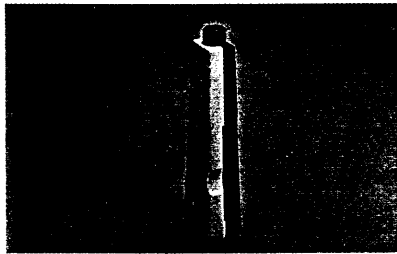
carrier for 3 duplex SC couplers, black

Copper modules fit directly into 1U panels or carriers for the 3U modular frame. They can be configured for either A or B wiring.

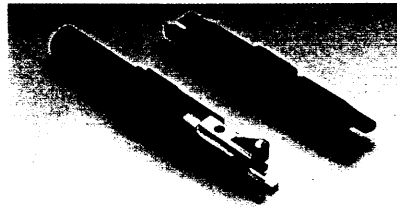
Coming Soon!
...8 way SC carrier

TOOLS

The D914 is a precision punchdown tool that can take either a 110 or an LSA blade. The blade design allows an insulated wire to be punched down and trimmed with one stroke.



PUNCHDOWN TOOL
CAT5C-D914
 punchdown tool
 (order blades separately)



BLADES
CAT5C-ACC-110
 110 blade for D914 tool
CAT5C-ACC-LSA
 LSA blade for D914 tool

BLANK PANELS

CAT5C-ACC-CM-004
 1U blank panel, black
CAT5C-ACC-CM-104
 1U blank panel, grey
CAT5C-ACC-CM-005
 2U blank panel, black
CAT5C-ACC-CM-105
 2U blank panel, grey

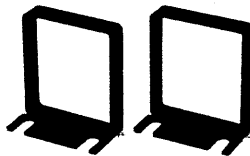


BLANKING PANELS

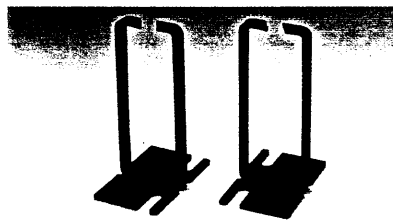
Cover unsightly gaps in your communications cabinet with 1U and 2U blanking panels.

PATCHLEAD ORGANISERS

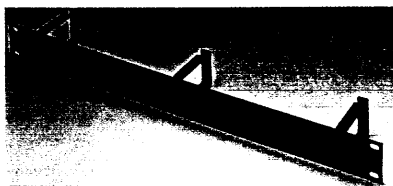
Patchleads can be organised by vertical or horizontal organiser bars and brackets. These will give a much neater look to the installation and make any changes easier to manage. Available in black or grey.



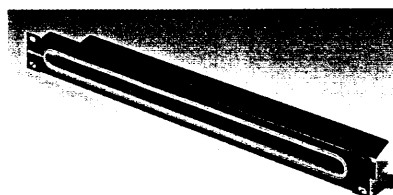
SIDE ORGANISERS (supplied in pairs)
CAT5C-ACC-CM-003
 Horizontal bracket, black
CAT5C-ACC-CM-103
 Horizontal bracket, grey



CAT5C-ACC-CM-002
 Vertical bracket, black
CAT5C-ACC-CM-102
 Vertical bracket, grey

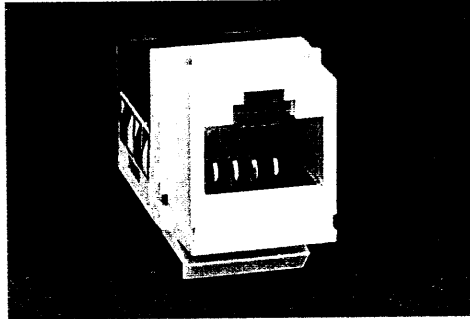


HORIZONTAL 1U ORGANISER BARS
CAT5C-ACC-CM-001
 19 inch, 1U organiser, black
CAT5C-ACC-CM-101
 19 inch, 1U organiser, grey

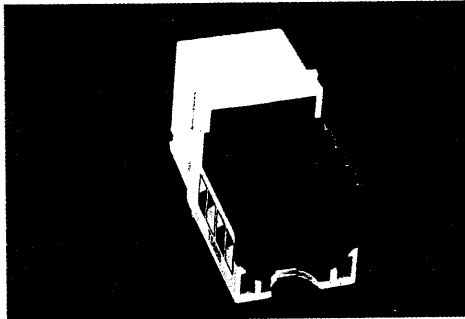


CAT5C-ACC-CM-006
 19 inch, 1U organiser with brush centre, black
CAT5C-ACC-CM-106
 19 inch, 1U organiser with brush centre, grey

RJ45 Jacks fit 25x50mm, 38x25mm and 45x45mm shuttered modules as well as integrated faceplates from BICC Brand-Rex. They are also compatible with other keystone style faceplates and wall outlets such as Gira, Thorsman, Jung and Peha

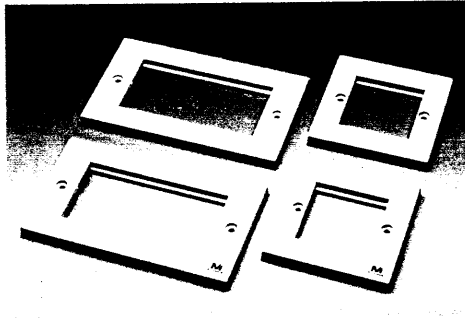


UTP LEAD FRAME JACK
CAT5C-SIJ-U-KEY-010B
 Unscreened lead frame jack, 110 IDC compatible 568 B wired
CAT5C-SIJ-U-KEY-010A
 Unscreened lead frame jack, 110 IDC compatible 568A wired



UK STYLE FACEPLATES

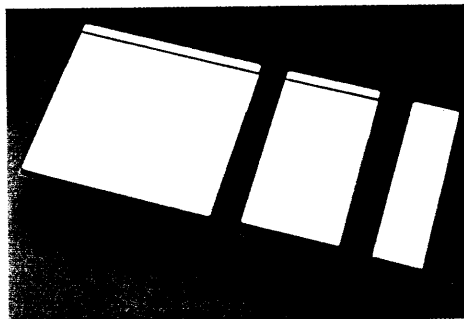
- CAT5C-WDO-UNI-030**
87 x 87 mm Single gang faceplate
- CAT5C-WDO-UNI-030-LO**
87 x 87 mm Single gang faceplate, MILLENNIUM logo
- CAT5C-WDO-UNI-031**
87 x 147 mm Double gang faceplate
- CAT5C-WDO-UNI-031-LO**
87 x 147 mm Double gang faceplate, MILLENNIUM logo



standard colour white

BLANK COVER FOR UK STYLE FACEPLATES

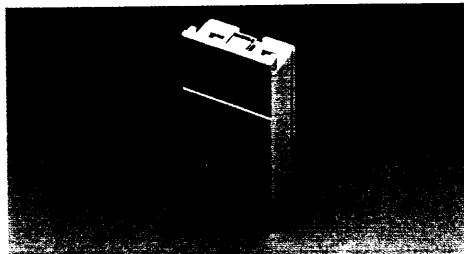
- CAT5C-WDO-UNI-052**
Half width blank, plain
- CAT5C-WDO-UNI-042**
Single width blank, indented
- CAT5C-WDO-UNI-040**
Double width blank, indented



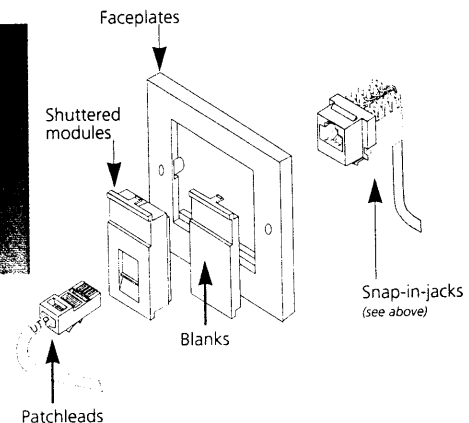
standard colour white

SHUTTERED MODULE

- CAT5C-WDO-UNI-062**
25 x 50mm shuttered module. Fits both UK and continental faceplates and accepts one snap-in jack.

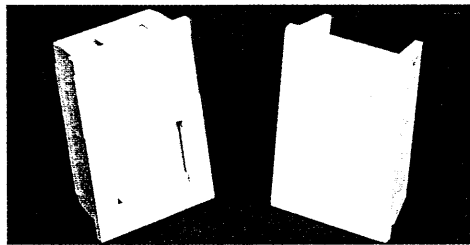
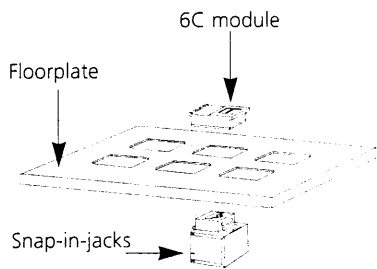


standard colour white



THE 'UNI' RANGE OF RJ45 JACKS, FACEPLATES AND MODULES

CAT5P



6C SHUTTERED MODULE

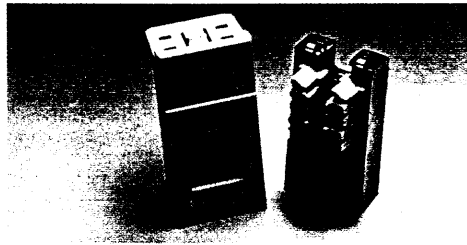
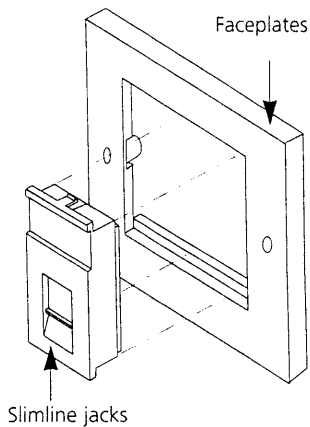
CAT5C-WDO-06C-001

38 x 25mm shuttered module for floor box applications. Accepts one snap-in jack.

CAT5C-BLK-06C-001

38 x 25mm blank.

standard colour white



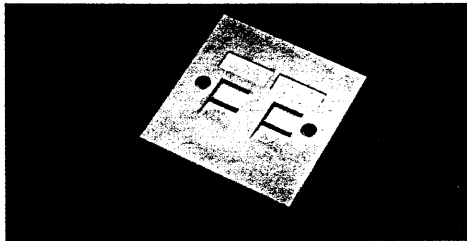
SLIMLINE JACK

Combined slimline RJ45 jack and shuttered module. Fits both UK and continental faceplates

CAT5C-WDO-SL45U-001 unscreened

CAT5C-WDO-SL45S-001 screened

standard colour white



INTEGRATED FACEPLATES

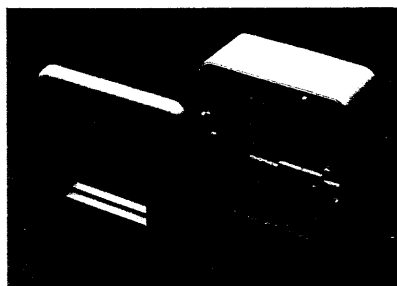
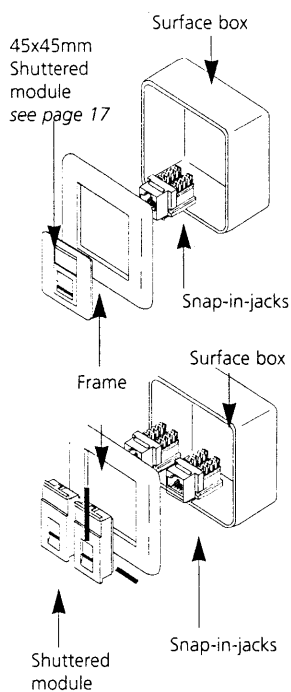
87 x 87mm white faceplates with integral shutter accepting 1 or 2 snap-in jacks

CAT5C-WDO-UNI-070

1 x RJ45 shutter

CAT5C-WDO-UNI-071

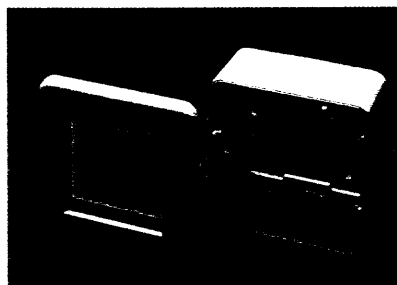
2 x RJ45 shutters



80 x 80mm "CONTINENTAL" STYLE OUTLETS

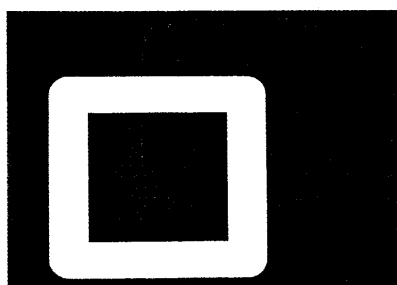
CAT5C-WDO-UNI-101

White 80 x 80mm frame with 45 x 45 aperture and surface box



CAT5C-WDO-UNI-100

White 80 x 80mm frame with 50 x 50 aperture and surface box



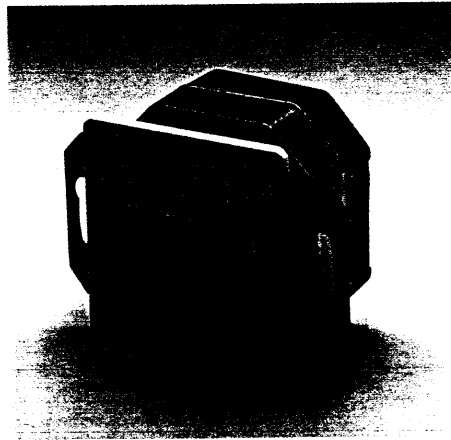
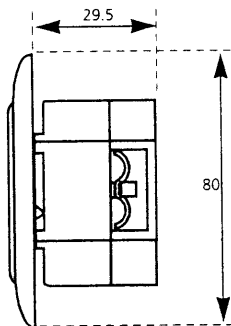
CAT5C-WDO-UNI-001

White 80 x 80mm square frame with 50 x 50mm aperture.

CAT5C-WDO-UNI-007

White 80 x 80mm rounded frame with 50 x 50mm aperture.

A combined screened outlet and RJ45 socket for German and continental style 80 x 80mm wall plates, flush mounting and cable trunking systems. All feature LSA insulation displacement connectors. Standard packing 5 per carton.



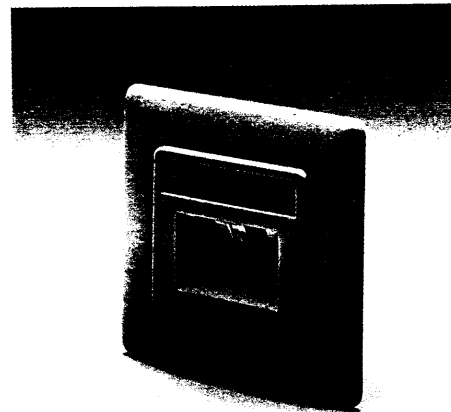
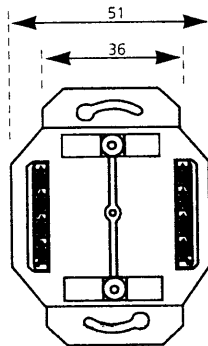
DUCT MOUNTED

Vertical cable inlet

C-WDO-J-F-145S-EK-P	1 X RJ45 RAL 1013
C-WDO-J-F-245S-EK-P	2 X RJ45 RAL 1013
C-WDO-J-F-145S-EK-R	1 X RJ45 RAL 9010
C-WDO-J-F-245S-EK-R	2 X RJ45 RAL 9010

Horizontal cable inlet

C-WDO-J-F-145W-EK-P	1 X RJ45 RAL 1013
C-WDO-J-F-245W-EK-P	2 X RJ45 RAL 1013
C-WDO-J-F-145W-EK-R	1 X RJ45 RAL 9010
C-WDO-J-F-245W-EK-R	2 X RJ45 RAL 9010



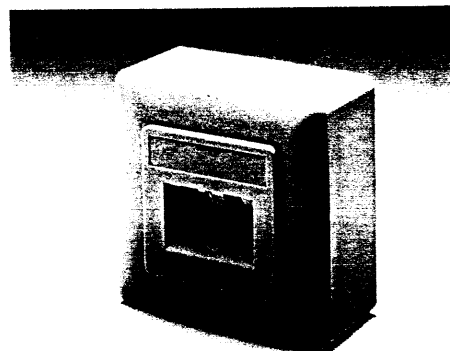
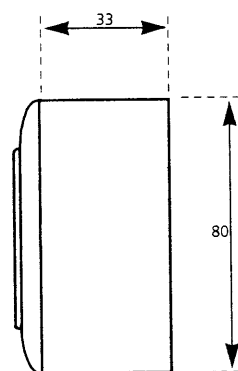
FLUSH MOUNTED

Vertical cable inlet

C-WDO-J-F-145S-UP-P	1 X RJ45 RAL 1013
C-WDO-J-F-245S-UP-P	2 X RJ45 RAL 1013
C-WDO-J-F-145S-UP-R	1 X RJ45 RAL 9010
C-WDO-J-F-245S-UP-R	2 X RJ45 RAL 9010

Horizontal cable inlet

C-WDO-J-F-145W-UP-P	1 X RJ45 RAL 1013
C-WDO-J-F-245W-UP-P	2 X RJ45 RAL 1013
C-WDO-J-F-145W-UP-R	1 X RJ45 RAL 9010
C-WDO-J-F-245W-UP-R	2 X RJ45 RAL 9010



WALL MOUNTED

Vertical cable inlet

C-WDO-J-F-145S-AP-P	1 X RJ45 RAL 1013
C-WDO-J-F-245S-AP-P	2 X RJ45 RAL 1013
C-WDO-J-F-145S-AP-R	1 X RJ45 RAL 9010
C-WDO-J-F-245S-AP-R	2 X RJ45 RAL 9010

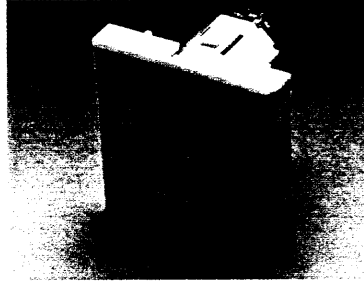
Horizontal cable inlet

C-WDO-J-F-145W-AP-P	1 X RJ45 RAL 1013
C-WDO-J-F-245W-AP-P	2 X RJ45 RAL 1013
C-WDO-J-F-145W-AP-R	1 X RJ45 RAL 9010
C-WDO-J-F-245W-AP-R	2 X RJ45 RAL 9010

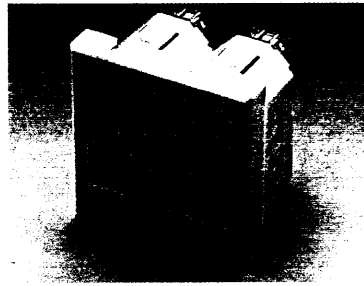
45 X 45MM AND L120 RJ45 OUTLETS UNIVERSAL MODULAR JACKS

CAT5P

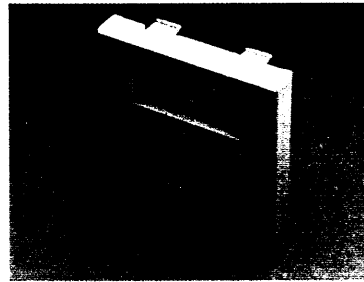
This range of outlets is principally for the French market and for any other requiring compatibility with French style outlets and/or 120 Ohm compatibility. All products in this section fit into a CAT5C-WDO-UNI-101 continental outlet.



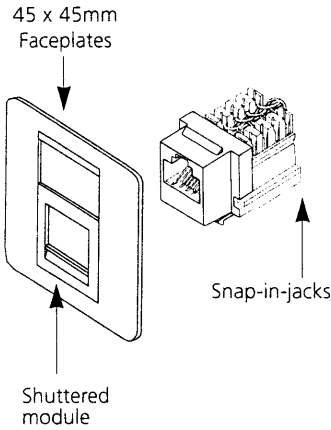
CAT5C-WDO-LGS45-001
Single RJ45 shielded outlet white, 45 x 45mm
(suffix 'A' for 568A wiring, 'B' for 568B)



CAT5C-WDO-LGD45-001
Double RJ45 shielded outlet, white, 45 x 45mm.
(suffix 'A' for 568A wiring, 'B' for 568B)

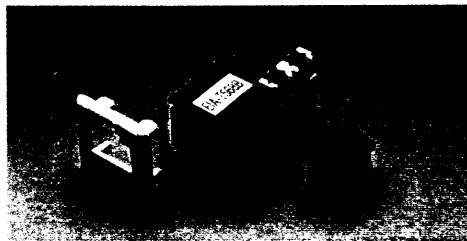


CAT5C-WDO-LG45-001
45 x 45mm shuttered module, white. Accepts all BICC Brand-Rex snap-in jacks

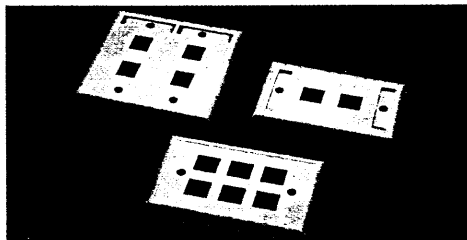


RJ45 UNIVERSAL MODULAR JACK, AND FACEPLATES

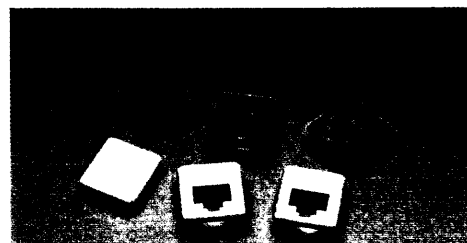
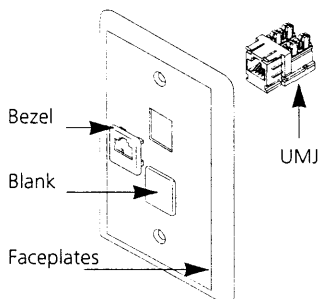
The UMJ jack is an unshielded, unshuttered component to fit US style faceplates or equivalent. It is held in place by a bezel at the front of the faceplate which is available in numerous colours and icon styles.



UMJ
CAT5C-SIJ-U-UMJ-001
unshielded jack, 110 IDC, 568B



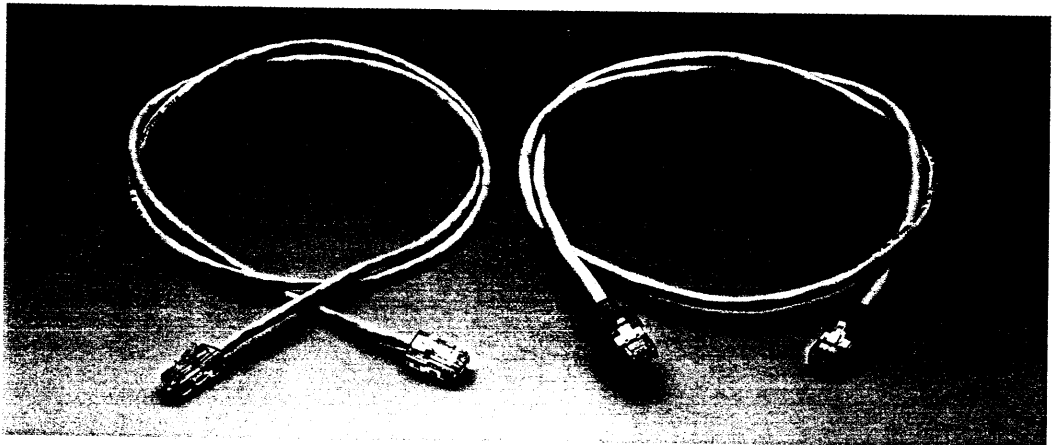
FACEPLATES
CAT5C-WDO-US-001
US style 2 way faceplate
CAT5C-WDO-US-002
US style 4 way faceplate
CAT5C-WDO-US-003
US style 6 way faceplate



BEZELS & BLANKS
CAT5C-ACC-US-002*
plain beige bezel for UMJ
CAT5C-ACC-US-001*
plain beige blank for US faceplate

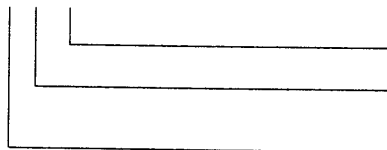
*add desired colour as a suffix if beige not suitable.

Get the best out of your cabling system with guaranteed quality, factory made and tested Category 5 patchleads. Beware the use of inferior alternatives which can lead to system imbalance problems and seriously degrade the cabling system performance when operating at high data rates. Standard colour is grey, with no boot on UTP patchcords, and a grey boot on FTP patchcords. Coloured boots and/or coloured cable are available as options in grey, red, blue, green or yellow. Details available on request.



RJ45 TO RJ45

CAT5C-PC-x-yyy-z

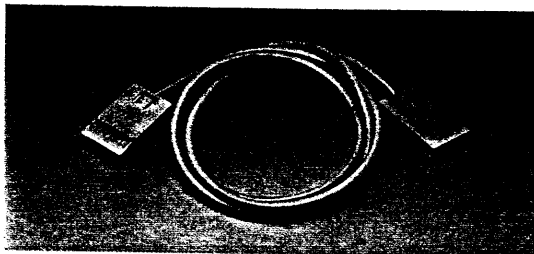


insert HF for Halogen Free version

insert cable length in 50cm units
eg 010 = 1m, 025 = 2.5m

cable type, U = UTP, F = FTP

eg CAT5C-PC-U-025 is an unscreened, 2.5m RJ45 to RJ45 Patchlead

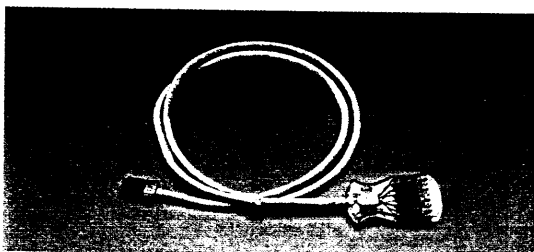


S110 PATCHLEADS

For use with the UTP S110 Cross Connect System

S110 to S110
CAT5C-S110-Px-Px-zzz

insert cable length in 50cm units
eg 010 = 1m, 025 = 2.5m
no. of pairs 2, 3 or 4



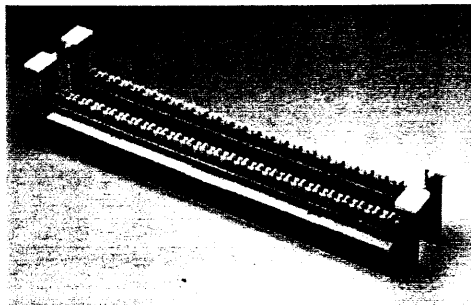
S110 to RJ45
CAT5C-S110-Xx-A4-zzz

insert cable length in 50cm units
eg 010 = 1m, 025 = 2.5m
single RJ45 connector
P4-4 pair 568B wired
E2-2 pair ethernet wired
T2-2 pair token ring wired

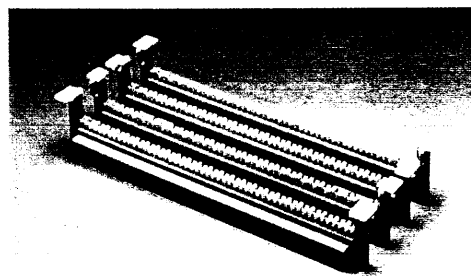
S110 CROSS CONNECT

CAT5P

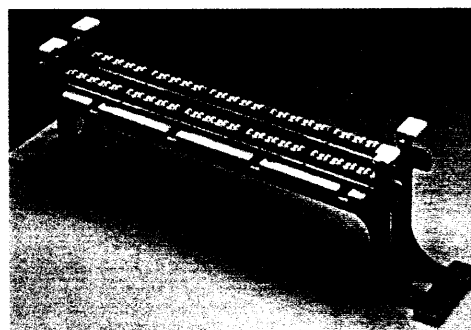
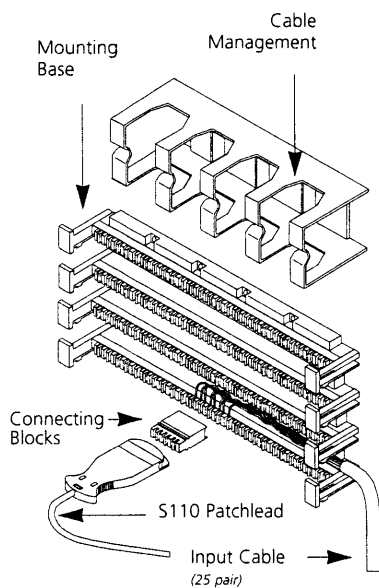
The S110 punch down blocks are category 5 rated and can be used for cross connect purposes, especially for 25 pair Category 5 cable, but also for any pair count backbone cable.



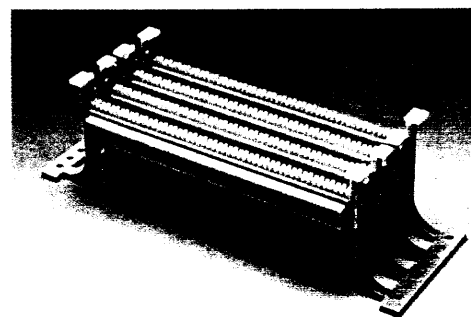
CAT5C-S110DW1-50
50 pair mounting base without legs



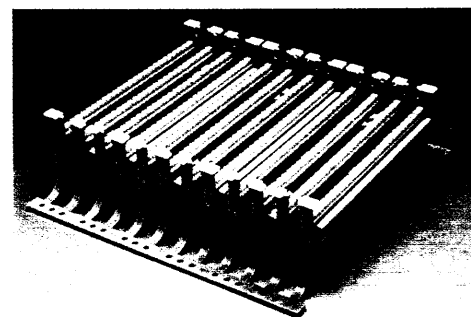
CAT5C-S110-DW1-100
100 pair mounting base without legs



CAT5C-S110-AW1-50
50 pair mounting base with legs



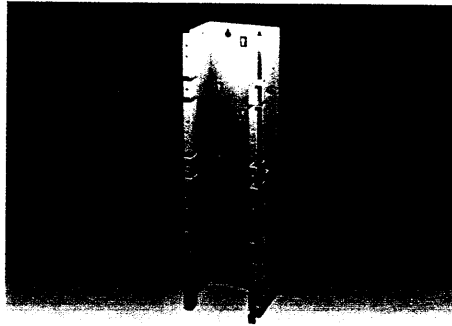
CAT5C-S110-AW1-100
100 pair mounting base with legs



CAT5C-S110-AW1-300
300 pair mounting base with legs

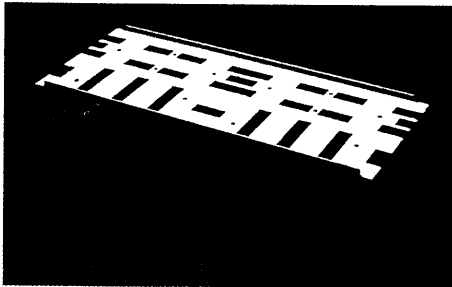
S110 CROSS CONNECT

CROSS CONNECT TOWERS



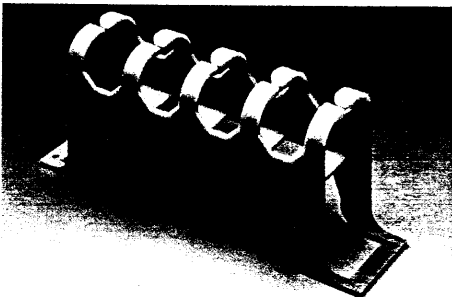
- CAT5C-XCTU17-101**
17U wall mounted tower unit
- CAT5C-XCTU22-101**
22U wall mounted tower unit
- CAT5C-XCTU42-101**
42U wall mounted tower unit

MOUNTING PANEL

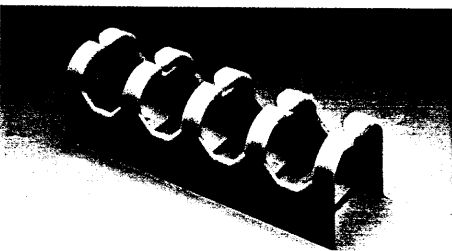


- CAT5C-XCP40-101**
4U 19inch recessed base mounting panel

CABLE MANAGEMENT TROUGHS

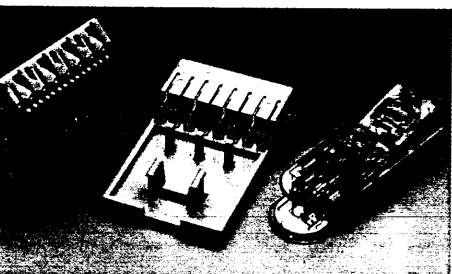


- CAT5C-S110A1RMS**
Cable management trough with legs installed between mounting bases to manage S110 patchleads



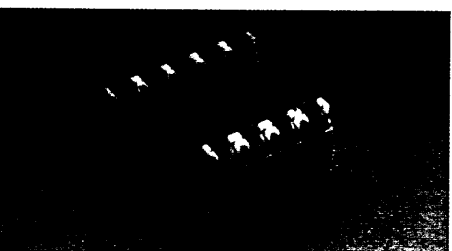
- CAT5C-S110-B1RMS**
Cable management trough without legs, installed between mounting bases to manage S110 patchleads.

FIELD MOUNTABLE PLUGS



- CAT5C-S110P2**
2 pair field mountable S110 patch plug
- CAT5C-S110P4**
4 pair field mountable S110 patch plug

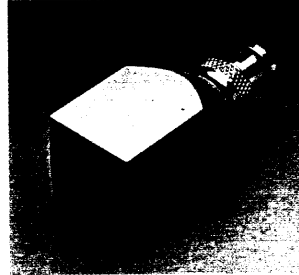
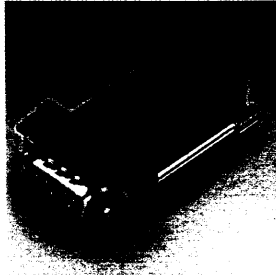
CONNECTING BLOCKS



- CAT5C-S110C-3**
3 pair connecting block
- CAT5C-S110C-4**
4 pair connecting block
- CAT5C-S110C-5**
5 pair connecting block

Baluns act as an interface between 100 ohm twisted pair cable and other types of cable, such as coax, with a different impedance. Ensure that the right balun for the appropriate application is selected along with the connector gender and active pins.

MEDIA FILTER
BAL-001
Token ring DB9 Media Filter



IBM 3270
BAL-006U
3270 coax balun, 93ohm male active pins 1 & 2, unscreened

BAL-007U
3270 coax balun, 93ohm male active pins 4 & 5, unscreened

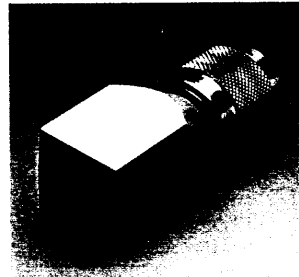
BAL-006S
3270 coax balun, 93ohm male active pins 1 & 2, screened

BAL-007S
3270 coax balun, 93ohm male active pins 4 & 5, screened

IBM DATA
CONNECTOR TO RJ45
BAL-002

IBM Type 1 150ohm data connector to RJ45 for 10 BaseT

BAL-003
IBM Type 1 150ohm data connector to RJ45 for Token Ring



IBM AS400 TWINAX

BAL-008U
RJ45 to Twinax, 110ohm male active pins 1 & 2, unscreened

BAL-009
RJ45 to Twinax, 110ohm male active pins 4 & 5, unscreened

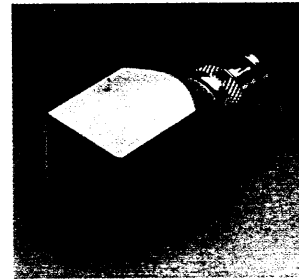
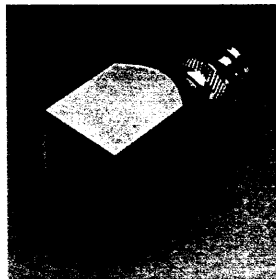
BAL-008S
RJ45 to Twinax, 110ohm male active pins 1 & 2, screened

BAL-009S
RJ45 to Twinax, 110ohm male active pins 4 & 5, screened

THIN ETHERNET
BAL-011U

50ohm Thin Ethernet male active pins 1 & 2, unscreened

BAL-011
50ohm Thin Ethernet male active pins 1 & 2, screened

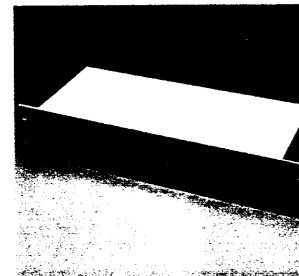
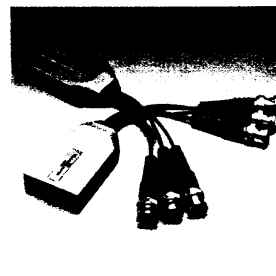


COMPOSITE VIDEO

BAL-004
RJ45 to BNC 75ohm composite video balun, eg for CCTV

RGB VIDEO
BAL-005

Triple coax Balun, 3 x 75ohm supplied as a pair, synch on green signal



BALUN RACKS

BAL-006-R16-001
19 inch 1U balun rack with 16, 3270 Baluns, pins 1 & 2

BAL-007-R16-001
19 inch 1U balun rack with 16, 3270 Baluns, pins 4 & 5

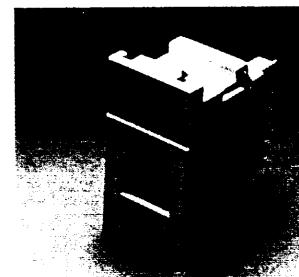
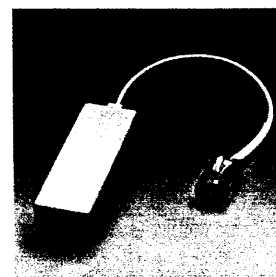
BAL-004-R16-001
19 inch 2U balun rack with 16 composite Video Baluns

BAL-005-R16-001
19 inch 2U balun rack with 16 RGB Video Baluns

LINE ADAPTOR UNITS
FLYING LEAD
LAU-SEC-001
secondary line Adaptor Unit with flying lead

LAU-PBX-M-001
PABX line Adaptor Unit with flying lead

LAU-PSTN-M-SP-001
PSTN line Adaptor unit with flying lead



LINE ADAPTOR UNITS
25 X 50 mm SNAP-IN
LJU-SEC-001

Snap-in line jack unit for digital PABX

LJU-PBX-001
Snap-in line jack unit for analogue PABX

LJU-PSTN-001
Snap-in line jack unit for PSTN applications

Note: that for some baluns the suffix U for Unscreened, S for Screened and/or L for tail cable may be required. IBM and AS400 are trademarks of International Business Machines Inc.