

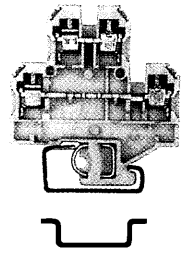
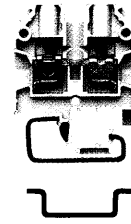
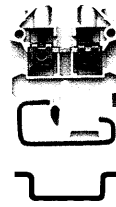
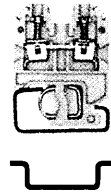
Feed-through terminals
(Test adapter systems see Section 2)

SAKD 2.5 N
SAKD 2.5/10/35

SAK 2.5
SAK 2.5/10/35

SAK 4
SAK 4/10/35

DK 4 Q*
DKB4 Q*/10*



Dimensions					
Width/length/height (mm)	With TS 32	5/32.5/43.5	6/36.5/46.5	6.5/40/51.5	6/54/60
Width/length/height (mm)	With TS 35 x 7.5	5/44/38	6/45/40	6.5/45/44	6/54/60.5
Insulation stripping length/Clamping screw/blade size		10/M 2.5/3.5 x 0.6	10/M 2.5/3.5 x 0.6	12/M 3/3.5 x 0.6	9/M 3/3.5 x 0.6
VDE rated data 0611 Part 1/8.92/IEC 947-7-1					
Rated voltage/current/cross-section		500 V/24 A/2.5 mm ²	800 V/24 A/2.5 mm ²	800 V/32 A/4 mm ²	500 V/2 x 32 A/4 mm ²
Rated impulse voltage/pollution severity		6 kV/3	8 kV/3	8 kV/3	6 kV/3
Further technical data					
Tightening torque range		Nm 0.4...0.7	0.4...0.7	0.5...1.0	0.5...1.0
Torque setting with DMS2 electric screwdriver		1	1	2	2
Clampable conductors					
"e" solid H07V-U	mm ²	0.5...2.5	0.5...6	0.5...6	0.5...4
"m" stranded H07V-R	mm ²	0.5...2.5	1.5...4	1.5...6	1.5...4
"f" flexible H07V-K	mm ²	0.5...2.5	0.5...4	0.5...4	0.5...4
"F" flexible H07V-K and AEH DIN 46 228/1	mm ²	0.5...2.5	0.5...2.5	0.5...4	0.5...4
Gauge pin to 947-1	Size	A 2	A 3	A 4	A 4
Continuous current rating of cross-conn. 2...5-pole	A	20	27	36	20
Continuous current rating of cross-conn. 6...10-pole	A	20	27	36	20

Technical data					
Voltage/current/conductor size		UL 300 V/20 A/28...12 AWG	600 V/20 A/22...12 AWG	600 V/20 A/22...12 AWG	300 V/27 A/22...12 AWG
Voltage/current/conductor size		CSA 300 V/20 A/22...12 AWG	600 V/25 A/26...10 AWG	600 V/36 A/26...10 AWG	300 V/10 A/26...12 AWG
Ordering data					
Version		Qty. Qty.	Qty. Qty.	Qty. Qty.	Qty. Qty.
Melamine			027962 100 038042 100	012832 100 044362 100	
Blue Melamine			027967 100 038047 100	012837 100 044367 100	
Stamin			027963 100	012833 100	
Polyamide		021556 100 026886 100	027966 ¹⁾ 100 038046 ¹⁾ 100	012836 ¹⁾ 100 044366 ¹⁾ 100	059006 ¹⁾ 100 059016 ¹⁾ 100
Blue Polyamide		021558 100 026888 100	027968 ¹⁾ 100 038048 ¹⁾ 100	012838 ¹⁾ 100 044368 ¹⁾ 100	059008 ¹⁾ 100 059018 ¹⁾ 100
Orange Polyamide			132636 ¹⁾ 100	010506 ¹⁾ 100 132366 ¹⁾ 100	
10 Terminal blocks marked 1-9 Wemid		040106 10 052316 10	032256 ¹⁾ 10 049945 ¹⁾ 10	032266 ¹⁾ 10 053046 ¹⁾ 10	132386 ¹⁾ 10
10 Terminal blocks unmarked Wemid		040116 10 052576 10	032286 ¹⁾ 10 049756 ¹⁾ 10	030886 ¹⁾ 10 053036 ¹⁾ 10	

End plate (thickness mm)		Type	Cat.No.	Qty.	Type	Cat.No.	Qty.	Type	Cat.No.	Qty.
Melamine					AP (1.5)	027952	20	AP (1.5)	011792	20
Blue Melamine					AP (1.5)	027957	20	AP (1.5)	011797	20
Stamin					AP (1.5)	027953	20	AP (1.5)	011793	20
Polyamide		AP (1.5)	015096	20	AP (1.5) 6	046056	20	AP (1.5)	011796	20
Blue Polyamide		AP (1.5)	015098	20	AP (1.5) 6	046058	20	AP (1.5)	011798	20
Polyamide					AP (1.5) 8	027956**	20			
Blue Polyamide					AP (1.5) 8	027958**	20			

Partition (thickness mm)		Type	Cat.No.	Qty.	Type	Cat.No.	Qty.	Type	Cat.No.	Qty.
Melamine					TW (2.5)	030282	20	TW (2.5)	013012	20
Blue Melamine					TW (2.5)	030287	20	TW (2.5)	010317	20
Stamin					TW (2.5)	030283	20	TW (2.5)	013013	20
Polyamide		TW (1.5)	019186	20	TW (1.5)	030286	20	TW (1.5)	013016	20
Blue Polyamide		TW (1.5)	019188	20	TW (1.5)	030288	20	TW (1.5)	013018	20
HP		TW (1.5)**	030750	20	TW (1.0)**	029710	20	TW (1.0)**	019710	20

Partition		TSch 1	Qty.	TSch 1	Qty.	TSch 6	Qty.
		TSch 3	036686 100	TSch 1	031916 100	TSch 6	019026 100

Cross-connection					
2-pole		Q 2	036780 50	Q 2	033700 50
3-pole		Q 3	036790 50	Q 3	033710 50
4-pole		Q 4	036800 50	Q 4	033720 50
10-pole		Q 10	036810 20	Q 10	036870 20
2-pole					
3-pole					
4-pole					
75-pole					
Insulating profile					

Switchable cross-connection link					
VL 2				VL 2	019700 100
BS				VH	028510 50
VH				BS	029250 100
				VL 2	044670 50
				VH	105650 100
				BS	034310 100

Marking tags		Print			
Consecutive horizontal		FW 5	047346	FW 6	046866
Consecutive vertical		FS 5	047356	FS 6	046876
		FW 6.5	046816	FW 6	046866
		FS 6.5	046826	FW 6	046876

Mounting rails, brackets, additional marking material and accessories please see relevant Catalogue Section
 ... Mounting of LS 2.8 screen rail Cat.No. 105640 possible ** only for TS 32 version
 ... max. 2.5 mm² when using QB connector
 1) Shock proof with ADP 4 cover profile