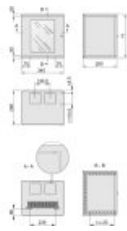
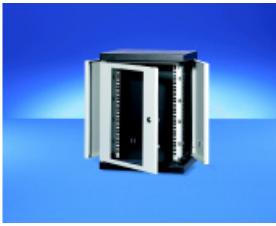


## 10" wall mounted enclosure



Part no.: 10238-151

## Features:

- Multi functional 10" wall case with hinged side panels
- Cable entry possible from above or below; the cable entry opening can be sealed with a brush strip
- 10" slide mounts are depth-adjustable in 25 mm increments



## Technical information:

Height	Height H	Width W	Depth D	Weight
4 U	262 mm	345 mm	280 mm	5 kg

Delivery comprises: assembled

Item	Qty	Description
1	1	Basic case, C-form, St, 2 mm, RAL 7021
2	1	Glazed door with key lock (key no. 2233), frame, St, 1.5 mm, RAL 7035, Sekurit glass, 4 mm
3	2	Side panel, St, 1,5 mm, RAL 7035
4	2	10" panel/slide mounts, St, 1.5 mm, finish AlZn
5	2	Brush strips
6	1	Assembly kit for wall mounting

## Accessories:

Part no.	Description	
21236-097	GND/earthing, PU 1 kit	<a href="#">Add to basket</a>
20118-351	Cable ties 92 mm x 2,5 mm, PU 25 pieces	<a href="#">Add to basket</a>
21190-435	19" assembly kit (screw, washer, nut) (32 x M6 screws x 16, 32 x plastic washers, 32 x cage nuts)	<a href="#">Add to basket</a>
21236-089	Feet, plastic, black, PU 4 pieces	<a href="#">Add to basket</a>

## Note:

- Lever handle and DIN profile half cylinder cannot be retrofitted