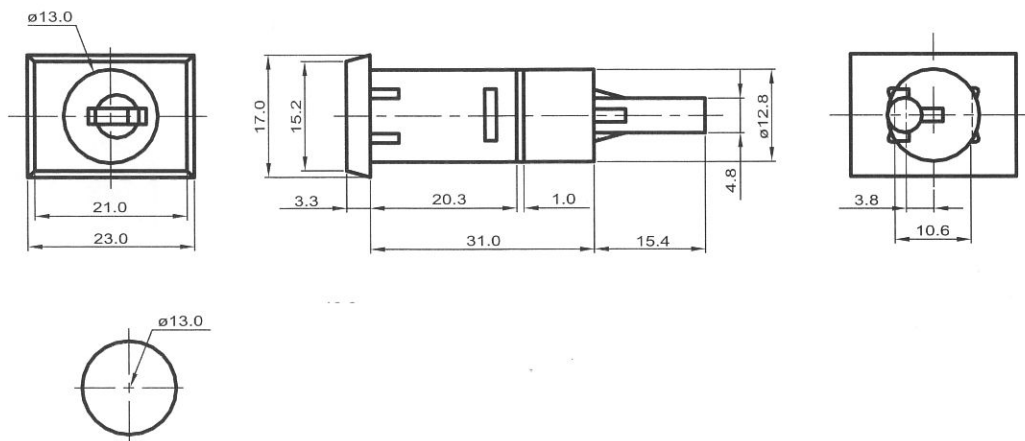


700 Disc Tumbler Systems

744LF |

744LF Series

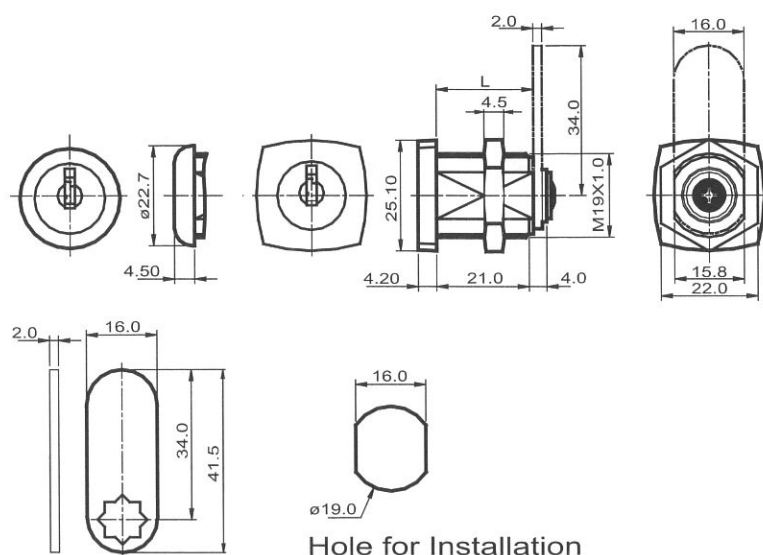


FIXING HOLE SIZE

Stock No	Housing Dimension	Lock Face	Terminal
744LF-30	dia12.85 x 31mm	Square	Locking Bar

742LF |

742LF Series



Hole for Installation

Stock No	Housing Length
742LF-RSB/C-DB11	11.0mm
742LF-RSB/C-DB16	16.0mm
742LF-RSB/C-DB20	20.0mm
742LF-RSB/C-DB22	22.0mm
742LF-RSB/C-DB27	27.0mm
742LF-RSB/C-DB32	32.0mm
742LF-SSB/C-DB11	11.0mm
742LF-SSB/C-DB16	16.0mm
742LF-SSB/C-DB20	20.0mm
742LF-SSB/C-DB22	22.0mm
742LF-SSB/C-DB27	27.0mm
742LF-SSB/C-DB32	32.0mm
742LF-RSB/C-MB11	11.0mm
742LF-RSB/C-MB16	16.0mm
742LF-RSB/C-MB20	20.0mm
742LF-RSB/C-MB22	22.0mm
742LF-RSB/C-MB27	27.0mm
742LF-RSB/C-MB32	32.0mm

700 Disc tumbler Systems

742LF Series

5 Disc Tumbler Cam Locks Feature:

- Cam locks are made out of alloy metal with Chrome Plated.
Yellow Zinc, Zinc plated or Black Paint are also available.
- With Round or Square face, featuring a 5 brass disc tumbler cylinder mechanism in 200 key combinations.
- Housing diameter 3/4" threaded M19 x 1.0 (3/4" x 27") with 2 flat with mounting nut.
- For drawer 90 degree or 180 degree, RH or LH wood or metal doors
- With lipped/overlay construction (straight cam) or flush construction (formed cam).
- With 8mm x 8mm cam hole, cam affixed by end screw.
- Filler washer for metal or spur washer for wood.
- Key removable in locked position only.
- With 2 nickel plated brass keys . Reversible key is available.
- KA(key alike) , KD(key different) are available.

742LF - RSB (#92) Series

Disc Tumbler Cam Lock, Round Head

- With stainless steel capped cylinder head.

742LF - SSB (#92) Series

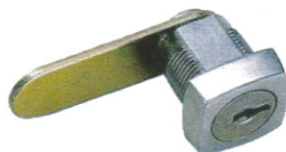
Disc Tumbler Cam Lock, Square Head

- With stainless steel capped cylinder head.

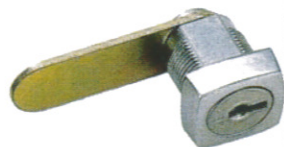
742LF - RSC (#92) Series

Disc Tumbler Cam Lock, Round Head

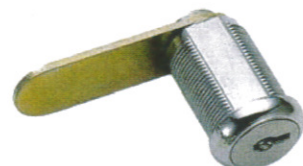
- With shiny chrome plated round head, without Stainless steel cylinder cap.



742LF-SSB-16



742LF-SSB-DB20



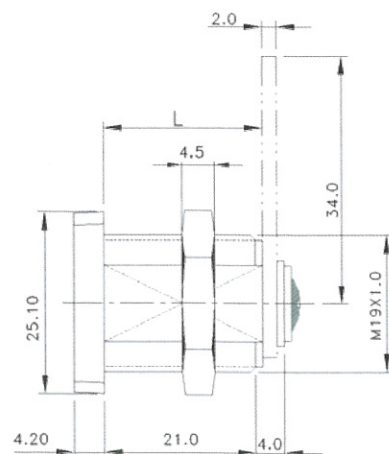
742LF-RSC-DB22



742LF-RSC-DB27



742LF-RSC-DB32



Stock no.	Housing L	Housing Diameter	Lock Face
742LF-RSB/C-DB11	11mm	19mm (3/4") M19 x 1.0/2 flat	Round Head
742LF-RSB/C-DB16	16mm	19mm (3/4") M19 x 1.0/2 flat	Round Head
742LF-RSB/C-DB20	20mm	19mm (3/4") M19 x 1.0/2 flat	Round Head
742LF-RSB/C-DB22	22mm	19mm (3/4") M19 x 1.0/2 flat	Round Head
742LF-RSB/C-DB27	27mm	19mm (3/4") M19 x 1.0/2 flat	Round Head
742LF-RSB/C-DB32	32mm	19mm (3/4") M19 x 1.0/2 flat	Round Head
742LF-SSB/C-DB11	11mm	19mm (3/4") M19 x 1.0/2 flat	Square Head
742LF-SSB/C-DB16	16mm	19mm (3/4") M19 x 1.0/2 flat	Square Head
742LF-SSB/C-DB20	20mm	19mm (3/4") M19 x 1.0/2 flat	Square Head
742LF-SSB/C-DB22	22mm	19mm (3/4") M19 x 1.0/2 flat	Square Head
742LF-SSB/C-DB27	27mm	19mm (3/4") M19 x 1.0/2 flat	Square Head
742LF-SSB/C-DB32	32mm	19mm (3/4") M19 x 1.0/2 flat	Square Head

700 5000 6000 7000 8000 600 800 900 series

742LF Series

5 Disc MKD Tumbler Cam Locks Feature:

- Cam locks are made out of alloy metal with Chrome Plated, Yellow Zinc, Zinc Plated or Black Paint are also available.
- Round or Square face, with stainless steel capped cylinder head, featuring a 5 brass disc tumbler cylinder mechanism.
Available for MKD master keying system.
- Housing diameter 3/4" threaded M19 x 1.0 (3/4" x 27") with 2 flat With mounting nut.
- For drawer 90 degree or 180 degree, RH or LH, wood or metal doors
- With lipped/overlay construction (straight cam) or flush construction (formed cam).
- With 8mm x 8mm cam hole, cam affixed by end screw.
- Filler washer for metal or spur washer for wood.
- Key removable in locked position only.
- With 2 nickel plated brass keys.

742LF - RSB - MB (#60) Series

Disc Tumbler Cam Lock, Round Head

- With stainless steel capped cylinder head.

742LF - SSB - MB (#60) Series

Disc Tumbler Cam Lock, Square Head

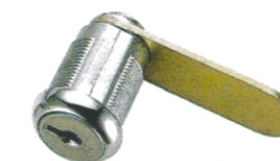
- With stainless steel capped cylinder head.

742LF - RSC - MB (#60) Series

Disc Tumbler Cam Lock, Round Head

- Without stainless steel capped cylinder head

Stock no.	Housing L	Housing Diameter	Lock Face
742LF-RSB-MB16	16mm	19mm (3/4") M19 x 1.0/2 flat	Round Head
742LF-RSB-MB20	20mm	19mm (3/4") M19 x 1.0/2 flat	Round Head
742LF-RSB-MB22	22mm	19mm (3/4") M19 x 1.0/2 flat	Round Head
742LF-RSB-MB27	27mm	19mm (3/4") M19 x 1.0/2 flat	Round Head
742LF-RSB-MB32	32mm	19mm (3/4") M19 x 1.0/2 flat	Round Head
742LF-SSB-MB16	16mm	19mm (3/4") M19 x 1.0/2 flat	Square Head
742LF-SSB-MB20	20mm	19mm (3/4") M19 x 1.0/2 flat	Square Head
742LF-SSB-MB22	22mm	19mm (3/4") M19 x 1.0/2 flat	Square Head
742LF-SSB-MB27	27mm	19mm (3/4") M19 x 1.0/2 flat	Square Head
742LF-SSB-MB32	32mm	19mm (3/4") M19 x 1.0/2 flat	Square Head



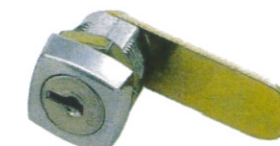
742LF-RSB-MB22



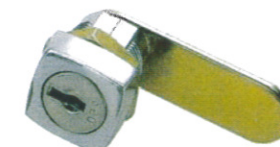
742LF-RSB-MB27



742LF-RSB-MB32



742LF-SSB-MB16



742LF-SSB-MB20

