



Brief Description

A²SI-Lite is a CMOS integrated circuit for AS-I (Actuator Sensor Interface) networks. The AS-I low-level field bus was designed for easy, safe and cost-effective interconnection of sensors, actuators and switches. It transports both power and data over the same two-wire unshielded cable. A²SI-Lite works in bus nodes as interfaces between the application and the physical layer (cable). The devices realize power supply, physical data transfer and communication protocol handling. It provides extended address mode, which allows the interconnection of up to 62 slave modules. The low-cost A²SI-Lite can be used in slave units. Certified to AS-I specification V3.0 the device is perfect for interconnecting simple switches and LEDs.

Features

- Slave operation only
- Certified to AS-I specification V3.0
- 2I/2O data port
- PWM output option
- 2 diagnostic pins (A2SI-L16 only)
- Operation temperature -25 to +85°C
- Package SOP14 (A2SI-L14) / SOP16 (A2SI-L16)

Benefits

- Suitable for Low-End-Devices, for instance pushbuttons and pilot-lights
- Very small package SOP 14 and SOP 16

Available Support

- ZMDI AS-Interface Programmer Kit USB

Physical Characteristics

- Operational temperature range: -25 to +85°C
- SOP14 A2SI-L14 package
- SOP16 A2SI-L16 package

A2SI-Lite Basic Application Circuit

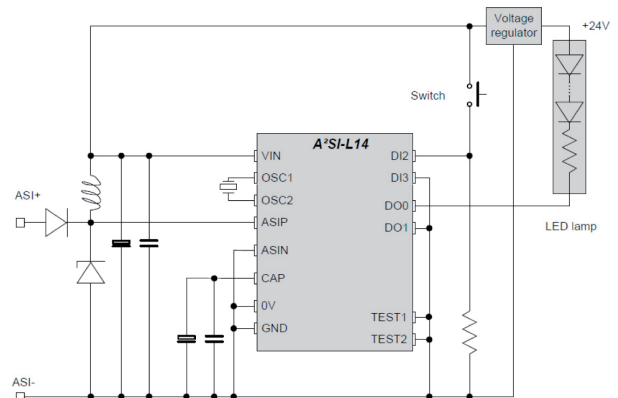


Figure 9-1: Typical application I.

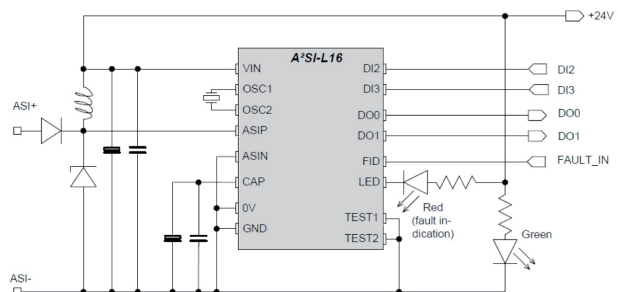


Figure 9-2: Typical application II

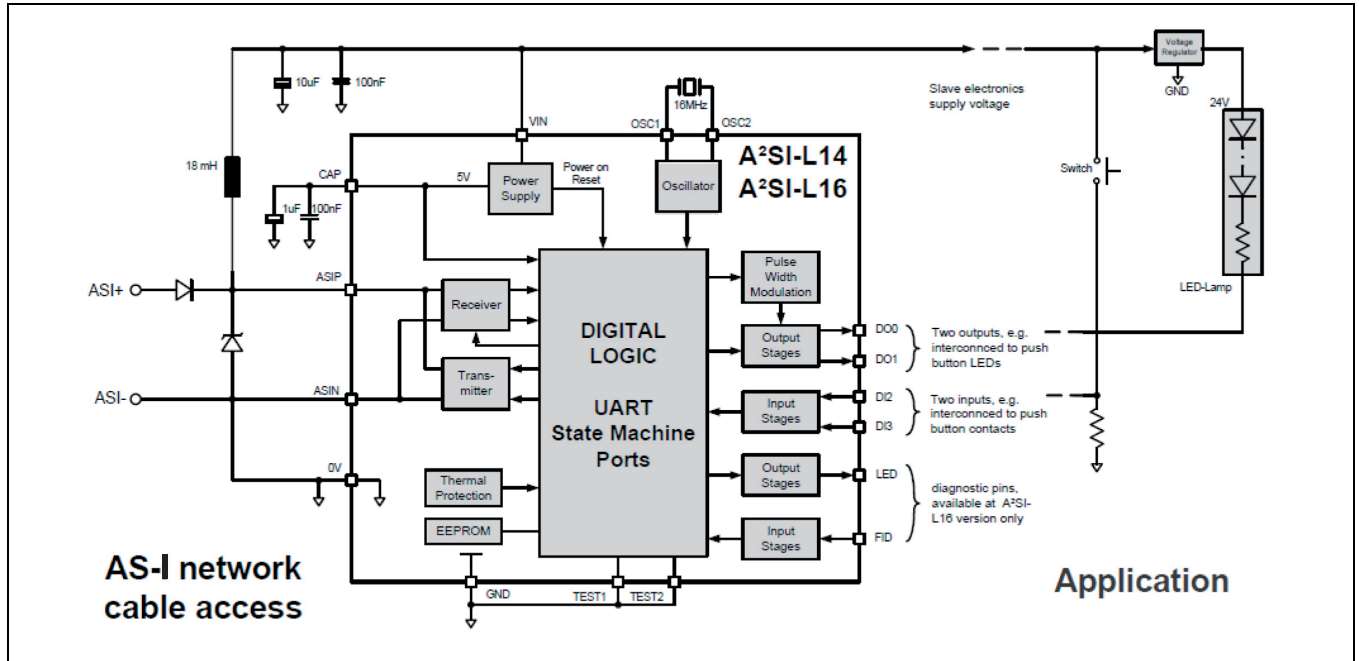
A²SI-Lite

Low-cost AS-Interface IC



The Analog Mixed Signal Company

A²SI Block Diagram



Ordering Information

Ordering Code	Product Description	Packaging
A2SI-L14-ST	A2SI-Lite 14 pin SOP, 150 mils package (without diagnostic pins)	Tube
A2SI-L14-SR		Tape & Reel
A2SI-L16-ST	A2SI-Lite 16 pin SOP, 150 mils package (with diagnostic pins)	Tube
A2SI-L16-SR		Tape & Reel

Sales and Further Information		www.zmdi.com	asi@zmdi.com
Zentrum Mikroelektronik Dresden AG Grenzstrasse 28 01109 Dresden Germany Phone +49 (0)351.8822.7274 Fax +49 (0)351.8822.8.7274	ZMD America, Inc. 8413 Excelsior Drive Suite 200 Madison, WI 53717 USA Phone +1 (608) 829-1987 Fax +1 (631) 549-2882	Zentrum Mikroelektronik Dresden AG, Japan Office 2nd Floor, Shinbashi Tokyu Bldg. 4-21-3, Shinbashi, Minato-ku Tokyo, 105-0004 Japan Phone +81.3.6895.7410 Fax +81.3.6895.7301	ZMD FAR EAST, Ltd. 3F, No. 51, Sec. 2, Keelung Road 11052 Taipei Taiwan Phone +886 2 2377 8189 Fax +886 2 2377 8199

DISCLAIMER: This information applies to a product under development. Its characteristics and specifications are subject to change without notice. Zentrum Mikroelektronik Dresden AG (ZMD AG) assumes no obligation regarding future manufacture unless otherwise agreed to in writing. The information furnished hereby is believed to be true and accurate. However, under no circumstances shall ZMD AG be liable to any customer, licensee, or any other third party for any special, indirect, incidental, or consequential damages of any kind or nature whatsoever arising out of or in any way related to the furnishing, performance, or use of this technical data. ZMD AG hereby expressly disclaims any liability of ZMD AG to any customer, licensee or any other third party, and any such customer, licensee and any other third party hereby waives any liability of ZMD AG for any damages in connection with or arising out of the furnishing, performance or use of this technical data, whether based on contract, warranty, tort (including negligence), strict liability, or otherwise.