

Wagobox



A multipurpose electrical junction enclosure that has been designed for use with the Wago 222 and 773 series terminal blocks. The Wagobox is **easier to use, quicker to fit and more configurable** than any other junction box of its size. It is the first of its type and redefines the standard for general purpose domestic and commercial junction boxes.

Fast

- Installing a Wagobox can take as little as 25% of the time it takes to install a screw terminal style junction box.
- Cables are cut to size and connected outside the box.
- No awkward connections in a small space.

Easy to use

- No screws or fiddly clamp bars.
- Cables slot into position and are secured in seconds.
- Uses simple to fit Wago pushwire and lever clamp terminals.

Compact

- Dimensions: 39mm x 44mm x 108mm.
- Supports up to 6 cables.
- Fits through a 60mm diameter spot light hole.

Configurable

- The integrated cable clamp can secure flex and 6242Y and 6243Y cables from 1.0mm² to 6.0mm² twin and earth.
- Robust cable grippers that can be configured in seconds to grip cables up to 8.00mm in diameter.
- Mix and match the Wago 222 and 773 terminal blocks to suit the job with up to 24 individual terminations.

Professional

- Complies with BSEN60670-22.
- Meets all the requirements of the 17th Edition of BS7671

Wago Terminals

WAGO Pushwire Terminal Blocks



773-102
2-Pole Pushwire
Conductor sizes:
 0.75mm² - 2.5mm² Solid Core
 1.5mm² - 2.5mm² Stranded Core
Current rating: 24A
Voltage rating: 400V/4KV



773-104
4-Pole Pushwire
Conductor sizes:
 0.75mm² - 2.5mm² Solid Core
 1.5mm² - 2.5mm² Stranded Core
Current rating: 24A
Voltage rating: 400V/4KV



773-106
6-Pole Pushwire
Conductor sizes:
 0.75mm² - 2.5mm² Solid Core
 1.5mm² - 2.5mm² Stranded Core
Current rating: 24A
Voltage rating: 400V/4KV



773-108
8-Pole Pushwire
Conductor sizes:
 0.75mm² - 2.5mm² Solid Core
 1.5mm² - 2.5mm² Stranded Core
Current rating: 24A
Voltage rating: 400V/4KV



773-173
3-Pole Pushwire
Conductor sizes:
 2.5mm² - 6.0mm² Solid Core
 2.5mm² - 6.0mm² Stranded Core
Current rating: 41A
Voltage rating: 400V/4KV

WAGO Lever Clamp Terminal Blocks



222-412
2-Pole Cage Clamp
Conductor sizes:
 0.08mm² - 2.5mm² Solid Core
 0.08mm² - 4.0mm² Stranded Core
Current rating: 32A
Voltage rating: 400V/4KV



222-413
3-Pole Cage Clamp
Conductor sizes:
 0.08mm² - 2.5mm² Solid Core
 0.08mm² - 4.0mm² Stranded Core
Current rating: 32A
Voltage rating: 400V/4KV



222-415
5-Pole Cage Clamp
Conductor sizes:
 0.08mm² - 2.5mm² Solid Core
 0.08mm² - 4.0mm² Stranded Core
Current rating: 32A
Voltage rating: 400V/4KV

Wagobox a junction box innovation

Quick, easy to fit, compact and configurable



T: +44 (0) 1353 666 011 F: +44 (0) 1353 669 038
 W: www.connexbox.com E: sales@connexbox.com



Installation Instructions

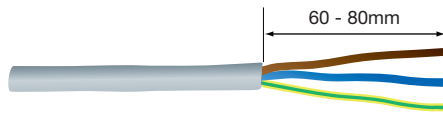
The Wagobox enclosure is designed for use with the 222 and 773 series of terminal blocks. The Wagobox is rated up to 400V and can support conductor sizes from 0.08mm² to 6.0mm². The maximum number of supported individual conductor connections is 24 at 1.0mm² to 6 at 6.0mm².

If you are in anyway unsure about any of the following steps or how to connect the circuit, then consult a qualified electrician.

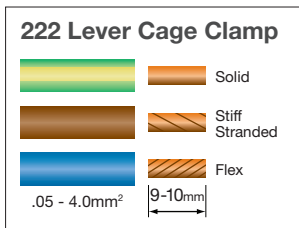
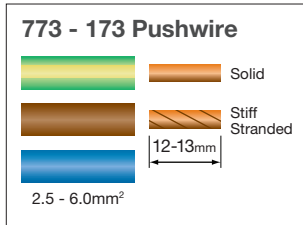
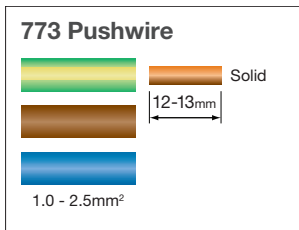
Incredibly Simple...

The Wagobox is easy to use and fast to fit, just follow the steps below and see how the Wagobox will revolutionise the way you work.

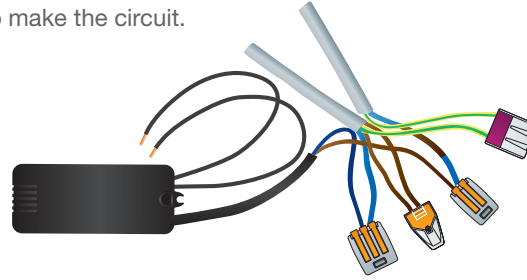
- 1 Strip back the outer protective sheath** of the cable 60mm - 80mm.



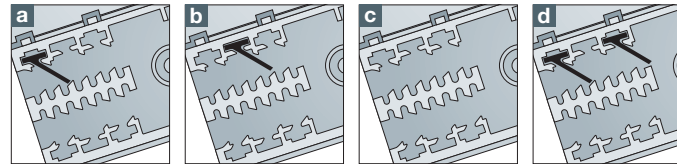
- 2 Select the appropriate 773 or 222 terminal block** for the circuit to be connected . Strip insulation to recommended length.



- 3 Connect the cables together** to make the circuit.

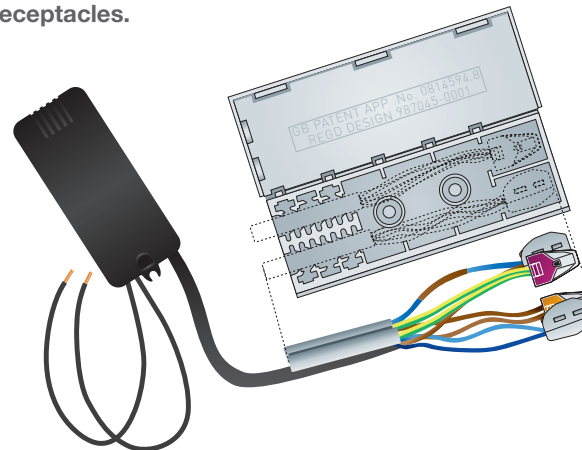


- 4 Configure the cable clamp** by putting the black plastic grippers in the correct position for the size of cable being used

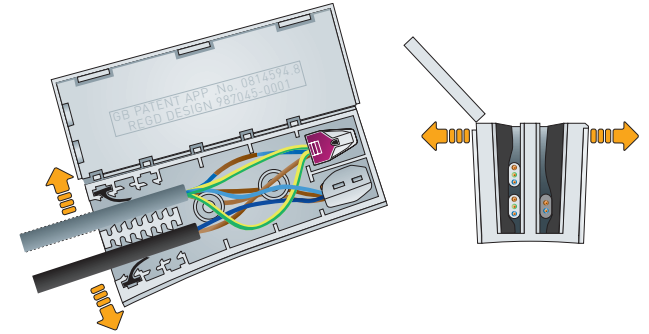


- a Tight Position** for small cables such as 1.0 and 1.5mm² twin and earth.
- b Offset Position** for medium size cables such as 2.5 and 4.0mm² twin and earth.
- c No Gripper** required for large cables such as 6.0mm² twin and earth
- d Optional extra gripper** position for extra grip on very small 2 core flex (May require the purchase of an additional gripper)

- 5 Arrange your terminals and slide them into the receptacles.**



- 6 When fitting the cables into the cable clamp** the sides of the box need to be eased apart to make an opening. It is normal for the entrance to be splayed apart with the cables in place.



- 7 Try to keep cables of a similar size together in the same slot and simply push them into the slot as far as they will go.**

Once all the cables are installed, firmly squeeze the gripper end of the box together and **snap shut the lid** so that it is held securely by the 3 locking tabs.

