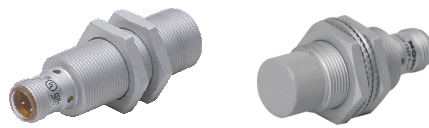


Inductive Sensors - Uprox+



Housing Style	Part Number	ID Number	Features	Sensing Range (mm)	Output	
18 mm - Embeddable, eurofast® Connection 	Bi 8U-EM18-AN6X-H1141	M1644738	Uprox+, Stainless steel	8	3-Wire DC NPN	
	Bi 8U-M18-AN6X-H1141	M1644737	Uprox+	8		
	Bi 8U-MT18-AN6X-H1141	M1644739	Uprox+, Teflon	8		
	Bi 8U-MT18-AN6X-H1141/S1589	M1644791	Uprox+, Teflon, weldguard	8		
	Bi 8U-EM18-AP6X-H1141	M1644734	M1644734	Uprox+, Stainless steel	8	3-Wire DC PNP
	Bi 8U-M18-AP6X-H1141	M1644731	M1644731	Uprox+	8	
	Bi 8U-MT18-AP6X-H1141	M1644730	M1644730	Uprox+, Teflon	8	
	Bi 8U-MT18-AP6X-H1141/S1589	M1644730-1	M1644730-1	Uprox+, Teflon, weldguard	8	
18 mm - Embeddable, eurofast Connection 	Bi 5U-M18M-AD4X-H1144	M4405066	Uprox+	5	2-Wire DC	
	Bi 5U-MT18HM-AD4X-H1144/S1589	M4405093	Uprox+, Teflon, weldguard	5		
	Bi 5U-MT18M-AD4X-H1144	M4405068	Uprox+, Teflon	5		
	Bi 8U-EM18E-AP6X-H1141	M1634865	M1634865	Uprox+, Stainless steel	8	3-Wire DC PNP
	Bi 8U-EM18M-AP6X2-H1141/S1589	M1644771	M1644771	Uprox+, Stainless steel, weldguard	8	
	Bi 8U-MT18M-AP6X2-H1141	M1644740	M1644740	Uprox+, Dual LED's	8	
	Bi 8U-MT18M-AP6X2-H1141/S1589	M1644741	M1644741	Uprox+, Teflon, weldguard	8	
	Bi 8U-M18M-VP44X-H1141	M1634877	M1634877	Uprox+	8	4-Wire DC PNP
18 mm - Nonembeddable, eurofast Connection 	Ni 15U-EM18-AN6X-H1141	M1635336	Uprox+, Stainless steel	15	3-Wire DC NPN	
	Ni 15U-M18-AN6X-H1141	M1635335	Uprox+	15		
	Ni 15U-MT18-AN6X-H1141	M1635337	Uprox+, Teflon	15		
	Ni 15U-MT18-AN6X-H1141/S1589	M16353370	Uprox+, Teflon, weldguard	15		
	Ni 15U-EM18-AP6X-H1141	M1635332	M1635332	Uprox+, Stainless steel	15	3-Wire DC PNP
	Ni 15U-M18-AP6X-H1141	M1635331	M1635331	Uprox+	15	
	Ni 15U-MT18-AP6X-H1141	M1635333	M1635333	Uprox+, Teflon	15	
	Ni 15U-MT18-AP6X-H1141/S1589	M1635333-1	M1635333-1	Uprox+, Teflon, weldguard	15	
18 mm - Nonembeddable, Extended Barrel, eurofast Connection 	Ni 10U-M18M-AD4X-H1144	M4405069	Uprox+	15	2-Wire DC	
	Ni 10U-MT18M-AD4X-H1144	M4405071	Uprox+, Teflon	15		
	Ni 15U-MT18M-AP6X2-H1141	M1635338	M1635338	Uprox+, Dual LED's	15	3-Wire DC PNP
	Ni 15U-MT18M-AP6X2-H1141/S1589	M16352920	M16352920	Uprox+, Dual LED's, weldguard	15	

For detailed sensor specifications see Section M.
Normally Closed versions available upon request, consult factory.



Voltage	Switching Freq. (Hz)	Operating Current (mA)	Operating Temp. (°C)	Protection	Housing	Face	Power LED	Output LED	Mating Cordset	Wiring Diagram #	Wiring Diagrams
10-30 VDC	1500	≤200	-30 to +85	IP 68	SS	LCP	N/A	YE	RK 4T-*	1	<p>Diagram 1</p> <p>Diagram 2</p> <p>Diagram 3</p> <p>Diagram 3</p>
	1500	≤200	-30 to +85	IP 68	CPB	LCP	N/A	YE	RK 4T-*	1	
	1500	≤200	-30 to +85	IP 68	TC	LCP	N/A	YE	RK 4T-*	1	
	1500	≤200	-30 to +85	IP 68	TC	LCP	N/A	YE	RKC 4T-*/S1587	1	
10-30 VDC	1500	≤200	-30 to +85	IP 68	SS	LCP	N/A	YE	RK 4T-*	2	
	1500	≤200	-30 to +85	IP 68	CPB	LCP	N/A	YE	RK 4T-*	2	
	1500	≤200	-30 to +85	IP 68	TC	LCP	N/A	YE	RK 4T-*	2	
	1500	≤200	-30 to +85	IP 68	TC	LCP	N/A	YE	RKC 4T-*/S1587	2	
10-65 VDC	1000	≤200	-30 to +85	IP 68	TC	LCP	N/A	YE	RKC 4T-*/S1587	4	
	1000	≤200	-30 to +85	IP 68	TC	LCP	N/A	YE	RKC 4.23T-*/S1587	4	
	1000	≤200	-30 to +85	IP 68	TC	LCP	N/A	YE	RKC 4T-*/S1587	4	
10-30 VDC	1000	≤200	-30 to +85	IP 68	SS	LCP	N/A	YE	RK 4T-*	2	
	1000	≤200	-30 to +85	IP 68	SS	LCP	N/A	YE	RKC 4T-*/S1587	2	
	1500	≤200	-30 to +85	IP 68	TC	LCP	GN	YE	RK 4T-*	2	
	1000	≤200	-30 to +85	IP 68	TC	LCP	N/A	YE	RKC 4T-*/S1587	2	
10-55 VDC	1500	≤200	-30 to +85	IP 68	CPB	LCP	N/A	YE	RK 4.4T-*	3	
10-30 VDC	1000	≤200	-30 to +85	IP 68	SS	LCP	N/A	YE	RK 4T-*	1	
	1000	≤200	-30 to +85	IP 68	CPB	LCP	N/A	YE	RK 4T-*	1	
	1000	≤200	-30 to +85	IP 68	TC	LCP	N/A	YE	RK 4T-*	1	
	1000	≤200	-30 to +85	IP 68	TC	WG	N/A	YE	RKC 4T-*/S1587	1	
10-30 VDC	1000	≤200	-30 to +85	IP 68	SS	LCP	N/A	YE	RK 4T-*	2	
	1000	≤200	-30 to +85	IP 68	CPB	LCP	N/A	YE	RK 4T-*	2	
	1000	≤200	-30 to +85	IP 68	TC	LCP	N/A	YE	RK 4T-*	2	
	1000	≤200	-30 to +85	IP 68	TC	LCP	N/A	YE	RK 4T-*	2	
10-65 VDC	1000	≤200	-30 to +85	IP 68	CPB	LCP	N/A	YE	RKC 4.23T-*/S1587	4	
	1000	≤200	-30 to +85	IP 68	TC	LCP	N/A	YE	RKC 4.23T-*/S1587	4	
10-30 VDC	1000	≤200	-30 to +85	IP 68	TC	LCP	GN	YE	RK 4T-*	2	
	1000	≤200	-30 to +85	IP 68	TC	LCP	GN	YE	RKC 4T-*/S1587	2	

Uprox+

* Length in meters.

For material descriptions see page M36.