

Tina Tina-MX6 series



Ordering number FA10646
Description FA10646_Tina-MX6-D

Family	Tina	FWHM	23 degrees
Type	Lens	Efficiency	93
LED	MX-6	cd/lm	-
Color	White	Gerber File	Available
Diameter	16 mm		
Height	10 mm		
Style	Round		
Optic Material	PMMA		
Holder Material	PC		
Fastening	-		
Status	Ready		



Ordering number FA10647
Description FA10647_Tina-MX6-M

Family	Tina	FWHM	34 degrees
Type	Lens	Efficiency	90
LED	MX-6	cd/lm	-
Color	White	Gerber File	Available
Diameter	16 mm		
Height	10 mm		
Style	Round		
Optic Material	PMMA		
Holder Material	PC		
Fastening	Tape, glue		
Status	Ready		



Ordering number FA10839
Description FA10839_Tina-MX6-W

Family	Tina	FWHM	44 degrees
Type	Lens	Efficiency	92
LED	MX-6	cd/lm	-
Color	White	Gerber File	Available
Diameter	16 mm		
Height	10 mm		
Style	Round		
Optic Material	PMMA		
Holder Material	PC		
Fastening	-		
Status	Ready		



Ordering number FA10888
Description FA10888-Tina-MX6-RS

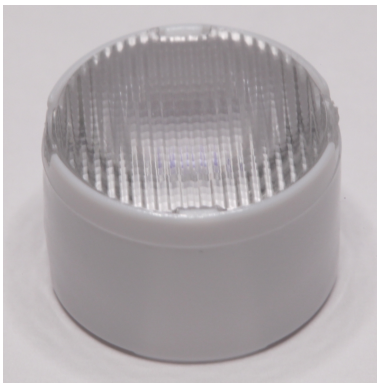
Family	Tina	FWHM	22 degrees
Type	Lens	Efficiency	96
LED	MX-6	cd/lm	-
Color	White	Gerber File	Available
Diameter	16 mm		
Height	10 mm		
Style	Round		
Optic Material	PMMA		
Holder Material	PC		
Fastening	-		
Status	Ready		

Tina Tina-MX6 series



Ordering number FA10901
Description FA10901-Tina-MX6-WW

Family	Tina	FWHM	60 degrees
Type	Lens	Efficiency	92
LED	MX-6	cd/lm	-
Color	White	Gerber File	Available
Diameter	16 mm		
Height	10 mm		
Style	Round		
Optic Material	PMMA		
Holder Material	PC		
Fastening	-		
Status	Ready		



Ordering number FA11201
Description FA11201-Tina-MX6-O

Family	Tina	FWHM	32+24 degrees
Type	Lens	Efficiency	-
LED	MX-6	cd/lm	-
Color	White	Gerber File	Available
Diameter	16 mm		
Height	10 mm		
Style	Round		
Optic Material	PMMA		
Holder Material	PC		
Fastening	-		
Status	Ready		