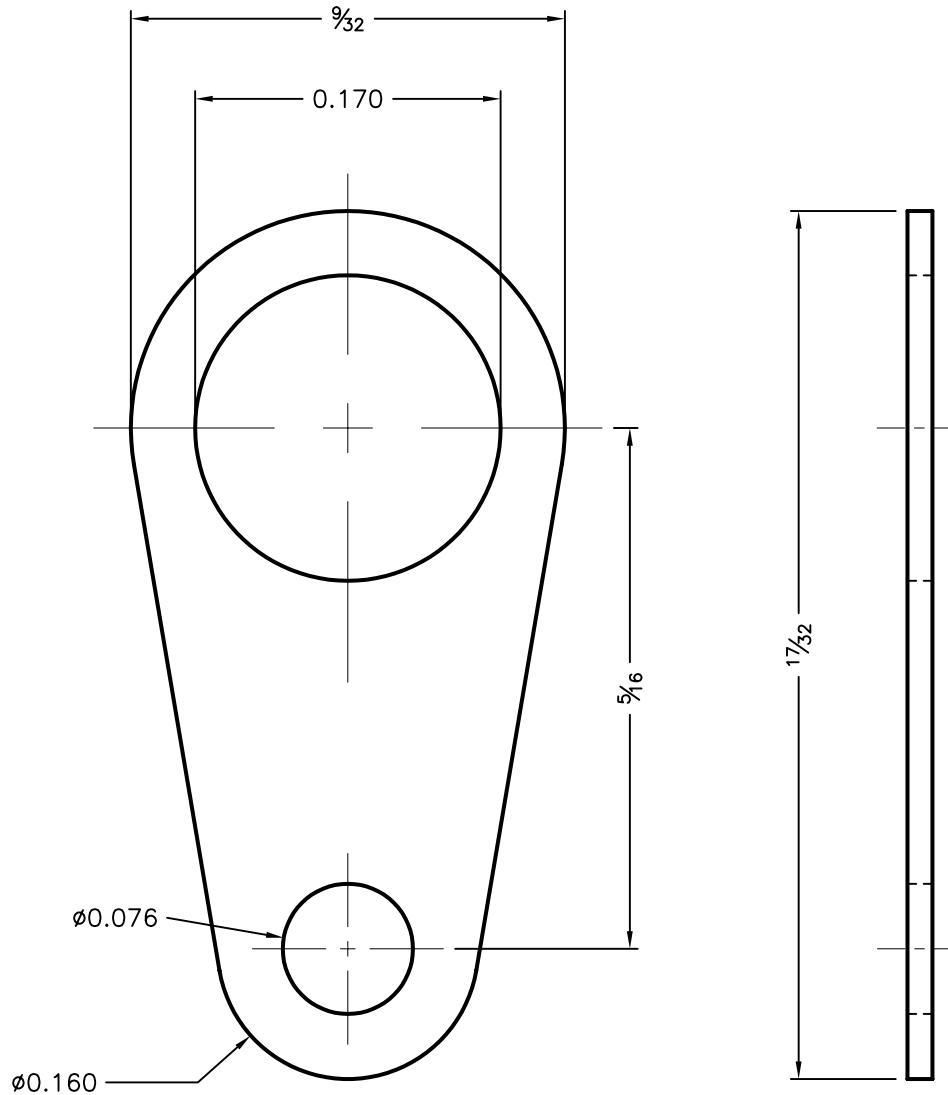


REVISIONS				DOC. NO. SPC-F004 * Effective: 7/8/02 * DCP No: 1398					
DCP #	REV	DESCRIPTION		DRAWN	DATE	CHECKD	DATE	APPRVD	DATE
1052	A	RELEASED		HYO	12/4/01	JWM	12/4/01	DJC	12/4/01
1892	B	Update To RoHS Compliant		EO	3/14/06	HO	3/15/06	HO	3/15/06



Material: 0.015 Thick Copper, Tin Plate

SPC-F004.DWG

TOLERANCES: UNLESS OTHERWISE SPECIFIED, FRACTIONAL ±0.015 DECIMALS ±0.005 ANGULAR ± 1°	DRAWN BY:	DATE:	DRAWING TITLE:					
	HISHAM ODISH	12/4/01	SOLDER TERMINAL LUG					
	CHECKED BY:	DATE:	SIZE	DWG. NO.	ELECTRONIC FILE		REV	
	JEFF MCVICKER	12/4/01	A	SPC11132		32C2109.DWG		B
	APPROVED BY:	DATE:	SCALE: NTS		U.O.M.: INCHES		SHEET: 1 OF 1	
	DANIEL CAREY	12/4/01						

ALL RIGHTS RESERVED. NO PORTION OF THIS PUBLICATION, WHETHER IN WHOLE OR IN PART CAN BE REPRODUCED WITHOUT THE EXPRESS WRITTEN CONSENT OF SPC TECHNOLOGY. DISCLAIMER: ALL STATEMENTS AND TECHNICAL INFORMATION CONTAINED HEREIN ARE BASED UPON INFORMATION AND/OR TESTS WE BELIEVE TO BE ACCURATE AND RELIABLE. SINCE CONDITIONS OF USE ARE BEYOND OUR CONTROL, THE USER SHALL DETERMINE THE SUITABILITY OF THE PRODUCT FOR THE INTENDED USE AND ASSUME ALL RISK AND LIABILITY WHATSOEVER IN CONNECTION THEREWITH.