

## YY Control Cables

300 / 500 V

### Description

#### Approval Certificates

VDE Reg N° 7691

#### Application

In dry and moist rooms for light mechanical stresses. Outdoors only when protected. Not in water. Not for torsionable applications. As supply and interconnecting cable for measuring, controlling and regulating acc. to DIN VDE 0113. For computer units, control equipments on machine tools assembly lines, conveyors and production lines for controlling, regulating and monitoring work processes, industrial plants and production lines when temporarily freely moved and no periodic recurrence without forced guidance. Cross sections above 10 mm<sup>2</sup> are energy supply cable for fixed installations on machine tools in production lines. This product is also part of our Windlink® offer dedicated to wind turbines.

#### Design

- **Conductor**

Copper bare stranded, VDE 0295 Class 5

- **Insulation**

PVC Type YI 2 (Polyvinyl chloride)

- **Outer sheath**

PVC Type YM 2 (Polyvinyl chloride), colour grey,

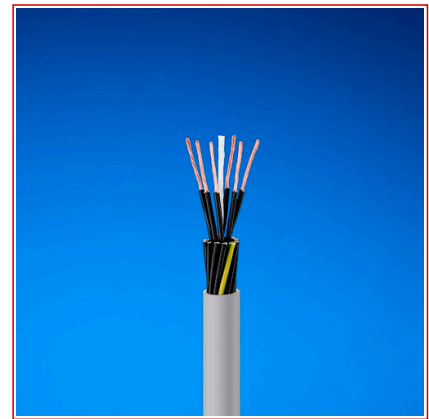
- **Core identification**

according to DIN VDE 0293:1990-01

JZ/OZ: black, white printed numbers and with/or without green/yellow core

JB: coloured cores according to HD 308 S2

Cables for special applications on request



#### Standards

##### International

Manufacturer specification



Lead free  
Yes



Conductor flexibility  
Flexible class  
5



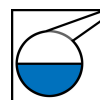
Rated Voltage  
U<sub>o</sub>/U (Um)  
300 / 500 V



Cable flexibility  
Flexible



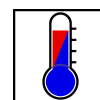
Mechanical resistance to impacts  
Normal industrial



Chemical resistance  
Occasional contact yes



Fire retardant  
IEC  
60332-1



Ambient dynamic operating temperature, range  
-15 .. 70 °C

## YY Control Cables

### Characteristics

Construction characteristics	
Conductor material	Bare copper
Core identification	Black cores with white numbers
Insulation	PVC compound type YI 2
Outer sheath	PVC compound type YM 2
Lead free	Yes
Conductor flexibility	Flexible class 5
Sheath colour	Grey
Electrical characteristics	
Test voltage	2 kV
Rated Voltage Uo/U (Um)	300 / 500 V
Mechanical characteristics	
Cable flexibility	Flexible
Mechanical resistance to impacts	Normal industrial use
Usage characteristics	
Ozone resistance	Yes
Chemical resistance	Occasional contact yes
Fire retardant	IEC 60332-1
Ambient dynamic operating temperature, range	-15 .. 70 °C
Ambient static operating temperature, range	-40 .. 70 °C
Dynamic bending factor	20 (xD)
Bending factor when installed	10 (xD)
RoHS conform	Yes
Field of application	Indoor
Silicon free	Yes

### Product List

☎=Make to order, 🏭=Make to stock

Nexans ref.	Number of cores	Conductor cross-section (mm <sup>2</sup> )	Copper content (kg/km)	Nominal outer diameter (mm)	Approximate net weight (kg/km)	With Green/Yellow core
🏭 78703002	2	0.5	9.6	4.7	32	No
🏭 78803002	2	0.5	9.6	4.7	32	No
🏭 78813002	2	0.5	9.6	4.7	32	No
🏭 78703003	3	0.5	14.4	5.1	39	Yes
🏭 78803003	3	0.5	14.4	5.1	39	Yes
🏭 78813003	3	0.5	14.4	5.1	39	Yes
🏭 78703004	4	0.5	19.2	5.4	46	Yes
🏭 78803004	4	0.5	19.2	5.4	46	Yes
🏭 78813004	4	0.5	19.2	5.4	46	Yes
🏭 78703005	5	0.5	24	6.2	57	Yes
🏭 78803005	5	0.5	24	6.2	57	Yes
🏭 78813005	5	0.5	24	6.2	57	Yes
🏭 78703006	6	0.5	28.8	7.2	64	Yes

☎ = Make to order, 🏭 = Make to stock

## YY Control Cables

Nexans ref.	Number of cores	Conductor cross-section (mm <sup>2</sup> )	Copper content (kg/km)	Nominal outer diameter (mm)	Approximate net weight (kg/km)	With Green/Yellow core
☎ 78703007	7	0.5	34	6.6	70	Yes
☎ 78803007	7	0.5	34	6.6	70	Yes
☎ 78813007	7	0.5	34	6.6	70	Yes
☎ 78703008	8	0.5	38	7.0	77	Yes
☎ 78703010	10	0.5	48	8.4	97	Yes
☎ 78703012	12	0.5	58	8.6	110	Yes
☎ 78803012	12	0.5	58	8.6	110	Yes
☎ 78813012	12	0.5	58	8.6	110	Yes
☎ 78703016	16	0.5	77	10.1	148	Yes
☎ 78703018	18	0.5	86	10.1	160	Yes
☎ 78703021	21	0.5	101	11.4	188	Yes
☎ 78703025	25	0.5	120	12.5	219	Yes
☎ 78703030	30	0.5	144	13.2	264	Yes
☎ 78703034	34	0.5	163	13.8	283	Yes
☎ 78703040	40	0.5	192	14.8	333	Yes
☎ 78703042	42	0.5	202	15.4	353	Yes
☎ 78703050	50	0.5	240	17.4	441	Yes
☎ 78703065	65	0.5	312	19.4	556	Yes
☎ 78703080	80	0.5	384	21.2	680	Yes
☎ 78703100	100	0.5	480	23.4	844	Yes
☎ 78803102	2	0.75	14.4	5.1	39	No
☎ 78813102	2	0.75	14.4	5.1	39	No
☎ 78703102	2	0.75	14.4	5.1	39	No
☎ 78803103	3	0.75	21.6	5.4	50	Yes
☎ 78813103	3	0.75	21.6	5.4	50	Yes
☎ 78703103	3	0.75	21.6	5.4	50	Yes
☎ 78803104	4	0.75	29	5.9	60	Yes
☎ 78813104	4	0.75	29	5.9	60	Yes
☎ 78703104	4	0.75	29	5.9	59	Yes
☎ 78803105	5	0.75	36	6.7	72	Yes
☎ 78813105	5	0.75	36	6.7	72	Yes
☎ 78703105	5	0.75	36	6.7	68	Yes
☎ 78703106	6	0.75	43	6.9	81	Yes
☎ 78803107	7	0.75	50	7.1	90	Yes
☎ 78813107	7	0.75	50	7.1	90	Yes
☎ 78703107	7	0.75	50	7.1	90	Yes
☎ 78703108	8	0.75	57	7.4	100	Yes
☎ 78703109	9	0.75	65	8.1	128	Yes
☎ 78703110	10	0.75	72	9.1	124	Yes
☎ 78803112	12	0.75	86	9.4	146	Yes
☎ 78813112	12	0.75	86	9.4	146	Yes
☎ 78703112	12	0.75	86	9.4	146	Yes

☎ = Make to order, ☎ = Make to stock

## YY Control Cables

Nexans ref.	Number of cores	Conductor cross-section (mm <sup>2</sup> )	Copper content (kg/km)	Nominal outer diameter (mm)	Approximate net weight (kg/km)	With Green/Yellow core
☎ 78703114	14	0.75	101	9.9	166	Yes
☎ 78703115	15	0.75	108	10.6	182	Yes
☎ 78703116	16	0.75	115	10.8	215	Yes
☎ 78803118	18	0.75	130	11.1	211	Yes
☎ 78813118	18	0.75	130	11.1	211	Yes
☎ 78703118	18	0.75	130	11.1	211	Yes
☎ 78703121	21	0.75	151	12.4	254	Yes
☎ 78803125	25	0.75	180	13.4	289	Yes
☎ 78813125	25	0.75	180	13.4	289	Yes
☎ 78703125	25	0.75	180	13.4	289	Yes
☎ 78703132	32	0.75	230	14.9	380	Yes
☎ 78703134	34	0.75	245	15.1	378	Yes
☎ 78703141	41	0.75	295	16.0	452	Yes
☎ 78703142	42	0.75	302	16.0	461	Yes
☎ 78703150	50	0.75	360	18.1	559	Yes
☎ 78703161	61	0.75	439	19.8	673	Yes
☎ 78703165	65	0.75	468	22.7	774	Yes
☎ 78703180	80	0.75	576	22.1	879	Yes
☎ 78703200	100	0.75	720	24.6	1084	Yes
☎ 78770543	3	0.75	21.6	5.4	50	No
☎ 78803202	2	1	19.2	5.3	49	No
☎ 78813202	2	1	19.2	5.3	49	No
☎ 78703202	2	1	19.2	5.3	49	No
☎ 78803203	3	1	29	5.6	60	Yes
☎ 78813203	3	1	29	5.6	60	Yes
☎ 78703203	3	1	29	5.6	60	Yes
☎ 78803204	4	1	38	6.5	69	Yes
☎ 78813204	4	1	38	6.5	69	Yes
☎ 78803205	5	1	48	6.7	83	Yes
☎ 78813205	5	1	48	6.7	83	Yes
☎ 78770474	3	1	29	5.8	57	No
☎ 78770475	4	1	38	6.1	69	No
☎ 78703205	5	1	48	6.7	83	Yes
☎ 78703206	6	1	58	7.0	101	Yes
☎ 78803207	7	1	67	7.5	104	Yes
☎ 78813207	7	1	67	7.5	104	Yes
☎ 78703207	7	1	67	7.5	104	Yes
☎ 78703208	8	1	77	8.0	120	Yes
☎ 78703209	9	1	86	9.9	161	Yes
☎ 78703210	10	1	96	9.9	161	Yes
☎ 78803212	12	1	115	9.9	174	Yes
☎ 78813212	12	1	115	9.9	174	Yes

☎ = Make to order, ☎ = Make to stock

## YY Control Cables

Nexans ref.	Number of cores	Conductor cross-section (mm <sup>2</sup> )	Copper content (kg/km)	Nominal outer diameter (mm)	Approximate net weight (kg/km)	With Green/Yellow core
☎ 78703212	12	1	115	9.9	174	Yes
☎ 78703214	14	1	134	10.6	202	Yes
☎ 78703215	15	1	144	11.1	215	Yes
☎ 78703216	16	1	154	11.1	226	Yes
☎ 78803218	18	1	173	11.7	252	Yes
☎ 78813218	18	1	173	11.7	252	Yes
☎ 78703218	18	1	173	11.7	252	Yes
☎ 78703221	21	1	202	13.1	305	Yes
☎ 78803225	25	1	240	14.3	346	Yes
☎ 78813225	25	1	240	14.3	346	Yes
☎ 78703225	25	1	240	14.3	346	Yes
☎ 78703234	34	1	326	16.3	477	Yes
☎ 78703241	41	1	394	17.7	566	Yes
☎ 78703242	42	1	403	17.9	578	Yes
☎ 78703250	50	1	480	19.1	682	Yes
☎ 78703204	4	1	38	6.5	69	Yes
☎ 78703300	100	1	960	27.5	1398	Yes
☎ 78703261	61	1	586	20.5	883	Yes
☎ 78703265	65	1	624	21.5	949	Yes
☎ 78703280	80	1	768	24.3	1092	Yes
☎ 78803304	4	1.5	58	7.4	92	Yes
☎ 78703334	34	1.5	490	18.8	642	Yes
☎ 78813304	4	1.5	58	7.4	92	Yes
☎ 78703342	42	1.5	605	20.5	798	Yes
☎ 78703350	50	1.5	720	22.2	926	Yes
☎ 78703304	4	1.5	58	7.4	92	Yes
☎ 78703361	61	1.5	878	23.7	1119	Yes
☎ 78803305	5	1.5	72	7.9	109	Yes
☎ 78703365	65	1.5	936	24.7	1020	Yes
☎ 78813305	5	1.5	72	7.9	109	Yes
☎ 78703380	80	1.5	1152	28.3	1545	Yes
☎ 78703400	100	1.5	1440	30.1	1808	Yes
☎ 78703305	5	1.5	72	7.9	109	Yes
☎ 78703306	6	1.5	86	8.6	133	Yes
☎ 78803307	7	1.5	101	9.0	147	Yes
☎ 78813307	7	1.5	101	9.0	147	Yes
☎ 78703307	7	1.5	101	9.0	147	Yes
☎ 78703308	8	1.5	115	9.5	169	Yes
☎ 78703309	9	1.5	130	10.5	185	Yes
☎ 78703310	10	1.5	144	11.3	210	Yes
☎ 78803312	12	1.5	173	11.6	237	Yes
☎ 78813312	12	1.5	173	11.6	237	Yes

☎ = Make to order, ☎ = Make to stock

## YY Control Cables

Nexans ref.	Number of cores	Conductor cross-section (mm <sup>2</sup> )	Copper content (kg/km)	Nominal outer diameter (mm)	Approximate net weight (kg/km)	With Green/Yellow core
☎ 78703312	12	1.5	173	11.6	237	Yes
☎ 78703314	14	1.5	202	12.0	271	Yes
☎ 78703316	16	1.5	230	12.9	310	Yes
☎ 78803318	18	1.5	259	13.7	347	Yes
☎ 78813318	18	1.5	259	13.7	347	Yes
☎ 78703318	18	1.5	259	13.7	347	Yes
☎ 78703321	21	1.5	302	14.9	403	Yes
☎ 78803325	25	1.5	360	16.9	490	Yes
☎ 78813325	25	1.5	360	16.9	490	Yes
☎ 78703325	25	1.5	360	16.9	490	Yes
☎ 78703332	32	1.5	461	18.1	606	Yes
☎ 78770442	3	1.5	43	6.7	78	No
☎ 78770308	4	1.5	58	7.2	97	No
☎ 78813303	3	1.5	43	6.5	79	Yes
☎ 78703303	3	1.5	43	6.5	79	Yes
☎ 78803303	3	1.5	43	6.5	79	Yes
☎ 78703302	2	1.5	29	6.2	61	No
☎ 78813302	2	1.5	29	6.2	61	No
☎ 78803302	2	1.5	29	6.2	61	No
☎ 78753402	2	2.5	48	7.3	92	No
☎ 78853403	3	2.5	72	7.7	119	Yes
☎ 78863403	3	2.5	72	7.7	119	Yes
☎ 78753403	3	2.5	72	7.7	119	Yes
☎ 78853404	4	2.5	96	8.5	148	Yes
☎ 78863404	4	2.5	96	8.5	148	Yes
☎ 78753404	4	2.5	96	8.5	148	Yes
☎ 78853405	5	2.5	120	9.7	180	Yes
☎ 78863405	5	2.5	120	9.7	180	Yes
☎ 78753405	5	2.5	120	9.7	180	Yes
☎ 78853407	7	2.5	168	10.1	232	Yes
☎ 78753407	7	2.5	168	10.1	232	Yes
☎ 78753408	8	2.5	192	11.3	274	Yes
☎ 78753412	12	2.5	288	13.9	377	Yes
☎ 78753418	18	2.5	432	17.1	575	Yes
☎ 78753425	25	2.5	600	20.7	786	Yes
☎ 78753434	34	2.5	816	21.7	1080	Yes
☎ 78753450	50	2.5	1200	28.7	1566	Yes
☎ 78853504	4	4	154	10.2	219	Yes
☎ 78863504	4	4	154	10.2	219	Yes
☎ 78753504	4	4	154	10.2	219	Yes
☎ 78753505	5	4	192	11.6	269	Yes
☎ 78753507	7	4	269	12.8	356	Yes

☎ = Make to order, ☎ = Make to stock

## YY Control Cables

Nexans ref.	Number of cores	Conductor cross-section (mm <sup>2</sup> )	Copper content (kg/km)	Nominal outer diameter (mm)	Approximate net weight (kg/km)	With Green/Yellow core
☎ 78753503	3	4	115	9.3	176	Yes
☎ 78753603	3	6	173	11.0	255	Yes
☎ 78853604	4	6	230	12.3	323	Yes
☎ 78863604	4	6	230	12.3	323	Yes
☎ 78753604	4	6	230	12.3	323	Yes
☎ 78753605	5	6	288	13.5	391	Yes
☎ 78753607	7	6	403	14.9	519	Yes
☎ 78753703	3	10	288	14.0	411	Yes
☎ 78753704	4	10	384	15.0	513	Yes
☎ 78753705	5	10	480	17.1	650	Yes
☎ 78753707	7	10	672	18.8	844	Yes
☎ 78753803	3	16	462	18.2	653	Yes
☎ 78753804	4	16	614	19.2	844	Yes
☎ 78753805	5	16	480	21.3	1012	Yes
☎ 78753807	7	16	1075	23.8	1367	Yes
☎ 78753854	4	25	960	23.0	1252	Yes
☎ 78753855	5	25	1200	25.8	1548	Yes
☎ 78753857	7	25	1680	28.5	2078	Yes
☎ 78753904	4	35	1344	26.7	1658	Yes
☎ 78763905	5	35	1680	29.5	2029	Yes
☎ 78751907	7	35	2352	38.0	3156	Yes
☎ 78772985	5	50	2400	34.7	2920	Yes
☎ 78770270	4	50	1920	31.5	2360	Yes
☎ 78770267	4	70	2688	35.7	3201	Yes
☎ 78772986	5	70	3360	40.0	4011	Yes
☎ 78770268	4	95	3648	41.1	4259	Yes
☎ 78772987	5	95	4560	45.6	5292	Yes
☎ 78770269	4	120	4608	45.1	5263	Yes

☎ = Make to order, ☎ = Make to stock

### Selling delivery information

#### Marking

- Nexans Rheyflex® 500 Y-JZ- 300/500 n G s VDE Reg. No 7691 CE RoHS conform
- Nexans Rheyflex® 500 Y-OZ- 300/500 n x s VDE Reg. No 7691 CE RoHS conform
- Nexans Rheyflex® 500 Y-JB- 300/500 n G s VDE Reg. No 7691 CE RoHS conform
- Nexans Rheyflex® 500 Y-OB- 300/500 n x s VDE Reg. No 7691 CE RoHS conform