

THE INFORMATION CONTAINED IN THIS DRAWING IS THE SOLE PROPERTY OF L-COM, INC. ANY REPRODUCTION IN PART OR WHOLE WITHOUT THE WRITTEN PERMISSION OF L-COM, INC. IS PROHIBITED.

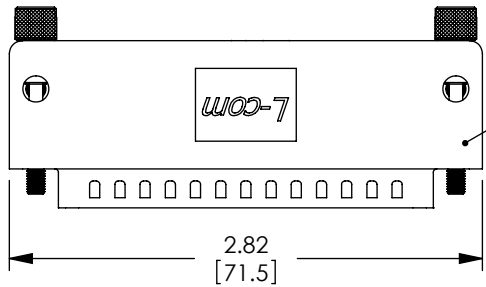
REVISIONS			
REV	DESCRIPTION	DATE	APPROVED
A	INITIAL RELEASE	10/11/10	D.GRIFFIN

D

C

B

A

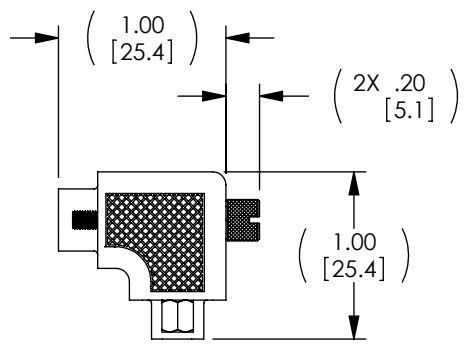


MOLDED GRAY  
PVC HOOD  
(PANTONE 424C)

"P1"  
DB37 MALE  
CONNECTOR  
WITH BACK  
HEX NUTS

2X #4-40 UNC-2A  
HEX JACKSCREW

PIN 1

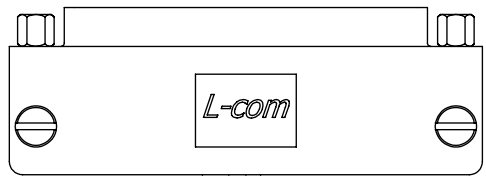


2X #4-40 UNC-2A

"J1"  
DB37 FEMALE  
CONNECTOR  
WITH BACK  
HEX NUTS

PIN 1

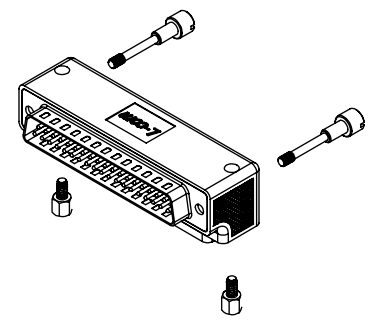
2X .149±.014  
[3.8±0.35]



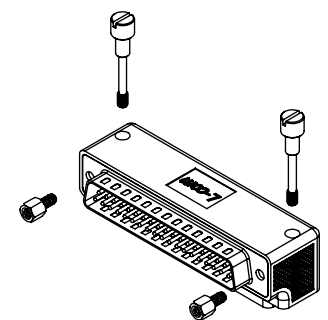
- NOTES:**
1. ADAPTER SHALL BE TESTED FOR CONTINUITY.
  2. ADAPTER SHALL BE INDIVIDUALLY PACKAGED IN ACCORDANCE WITH L-COM SPECIFICATION PS-0031.
  3. PRODUCT SHIPPED IN STANDARD HARDWARE CONFIGURATION SHOWN ABOVE AND IN EXPLODED VIEW.
  4. ADAPTER IS WIRED STRAIGHT THROUGH FROM PIN TO LIKE-NUMBERED PIN.

## HARDWARE CONFIGURATIONS


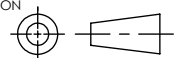
### STANDARD HARDWARE CONFIGURATION



### ALTERNATE HARDWARE CONFIGURATION



## RoHS Compliant ✓

UNLESS OTHERWISE SPECIFIED, DIMENSIONS ARE IN INCHES [mm] OVERALL CABLE LENGTH TOLERANCE: ≤12 [305] = +1 [25] / -0 >12 [305] ≤60 [1524] = +2 [51] / -0 >60 [1524] ≤120 [3048] = +4 [102] / -0 >120 [3048] ≤300 [7620] = +6 [152] / -0 >300 [7620] = +3% / -0% ALL OTHER DIMENSIONAL TOLERANCES: .X = ±.2 .XX = ±.02 .XXX = ±.005	APPROVALS	DATE	 45 BEECHWOOD DRIVE NORTH ANDOVER, MA 01845	
	DRAWN BY D.FRISIELLO	6/2/10		
	CHECKED BY C.BRAN	6/2/10	CATEGORY DATA	
	APPROVED BY S.SMITH	6/2/10	PRODUCT DESCRIPTION ADPT,DB37M/F RA ORIENTATION 3	
PROJECTION 	CONFIGURATION DETAILS OF UNDIMENSIONED FEATURES MAY VARY	COLOR VARIATIONS MAY OCCUR	SIZE <b>A</b>	FSCM NO. <b>43321</b>
REF	SCALE: NONE	CAD FILE: DG9037MF3.SLDDRW	DWG. NO. DG9037MF3	REV. <b>A</b>

D

C

B

A