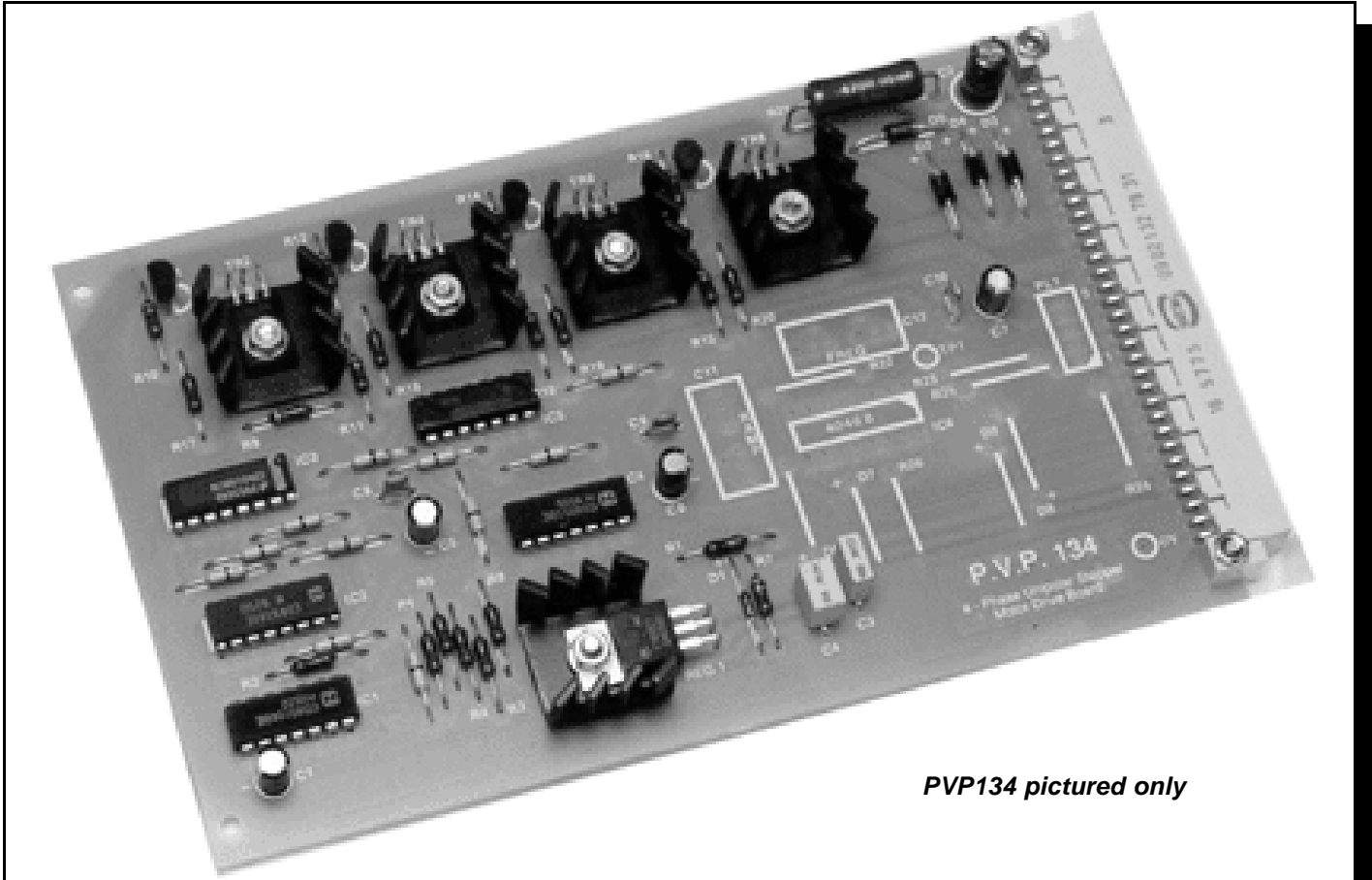

13 SERIES STEPPER DRIVES

PVP134 & PVP134B



PVP134 pictured only

The Series 13 range of Stepper Motor Drives, manufactured by Alzanti, have been developed to meet the growing demand for high performance, cost effective, L/R drivers. They have been designed to be compatible with the specifications of many permanent magnet and hybrid stepper motors up to NEMA frame size 34 and are therefore suitable for numerous applications.

The **PVP134** unipolar model can sink a maximum continuous motor current of 2 Amps per phase and the **PVP134B** bipolar model can sink and source a maximum continuous current of 2 Amps per phase. Motor phase currents are set by using series power resistors in the motor leads, and rail voltages as high as 30Vdc may be used.

As standard the boards can operate in either full or half step mode and control is achieved by conventional pulse and direction inputs.

Optional extras include:-

1. A simple on-board oscillator for manual speed control.
2. +5Vdc input configuration for easy interfacing to microprocessor and other low voltage logic circuits.

ALZANTI®
THE DRIVING FORCE IN MOTION CONTROL

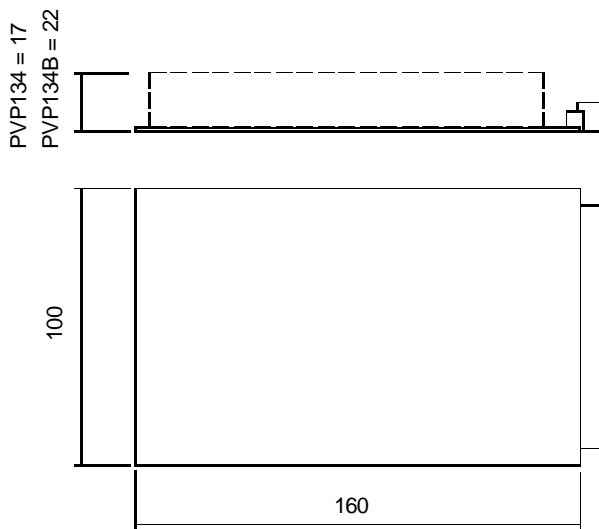
ALZANTI LIMITED

The Warren, Darby Green Lane, Blackwater,
Camberley, Surrey, UK, GU17 0DN.
Tel: +44 (0)1252 861113
Fax: +44 (0)1252 861103
Email: sales@alzanti.com
Website: <http://www.alzanti.com>

SPECIFICATION

| | PVP134 | PVP134B |
|-----------------------------------|--|--|
| Motor Supply Voltage: | 15 to 35Vdc (maximum) smoothed, unregulated | |
| Motor Output Current: | 2 Amps maximum | |
| Suitable Motor Types: | 6 and 8 lead | 4, 6 and 8 lead frame size up to NEMA 34 |
| Logic Supply Voltage: | 15 to 35Vdc (maximum) smoothed, unregulated | |
| Logic Supply Current: | 60mA (typical) | 75mA (typical) |
| Aux. Supply Output: | +12Vdc regulated, 50mA maximum | |
| Max. Step Pulse Frequency: | 30kHz, with minimum pulse width of 10µS | |
| Control Signal Inputs: | CMOS Schmitt Trigger inputs operating at +12Vdc with 10kΩ pull-up resistors, i.e. NPN 'sinking' compatible. Logic 0 (low) 0V to +2V, or short circuit to 0V Logic 1 (high) +9V to +30V max, or open circuit | |
| Temperature Range | | |
| Operating: | 0°C to +40°C ambient max. (RH ≤60%, non condensing) | |
| Storage: | -10°C to +70°C maximum (RH ≤60%, non condensing) | |
| Weight: | 110g (typical) | 130g (typical) |
| Edge Connector (PCB): | 32 way row a only | 64 way row a & b DIN41612 plug, body style B, class 3 |
| Printed Circuit Board: | 1.6mm CEM1 UL94-V0, Solder Resist and Ident | |

DIMENSIONS IN mm



Control Input Options

