



ALL RIGHTS RESERVED. NO PORTION OF THIS PUBLICATION, WHETHER IN WHOLE OR IN PART, CAN BE REPRODUCED WITHOUT THE EXPRESS WRITTEN CONSENT OF SPC TECHNOLOGY.

SPC-F005.DWG

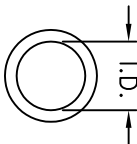
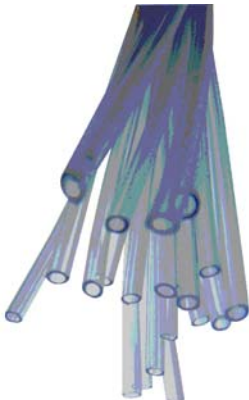
REVISIONS				DOC. NO. SPC-F005 * Effective: 7/8/02 * DCP No: 1398			
DCP #	REV	DESCRIPTION	DRAWN	DATE	CHECKD	DATE	APPRVD
270	A	RELEASED	HYO	8/16/00	JC	12/20/00	DJC
1914	B	Update To RoHS Compliant	EO	5/29/06	HO	5/30/06	HO



SPECIFICATIONS:

- 1. Flexible heat shrinkable tubing meeting the requirements of USFDA Reg. C.F.R. 177.1330 for food contact.
- 2. Has been formulated using ingredients approved by the FDA as non-toxic.
- 3. Shrink Ratio: 2:1
- 4. Longitudinal Shrinkage: ±5%
- 5. Minimum Recommended Shrink Temperature: Shrinks quickly at 121°C (275°F) with heat gun, infrared or other heat sources.
- 6. Chemical Resistance: Resists a wide range of chemicals and oils as well as sunlight, moisture and fungus.
- 7. Operating Temperature Range: -55°C ~ 121°C
- 8. Environmentally Friendly: Breaks down to carbon dioxide and water when properly incinerated.
- 9. Material: Acrylated Olefin.
- 10. Typical applications include: Cable and component insulation / Protection of equipment in the food industry and drinking water purification.

PROPERTY	TEST METHOD	TYPICAL VALUE
Hardness Shore D Instantaneous	ASTM D 2240	70 max.
Tensile Strength	ASTM D 638	2500 psi min
Elongation	ASTM D 638	500% min.
Secant Modulus, 2%	ASTM D 2671	1.8 x 10 psi max.
Dielectric Strength in air @ 500 kv/min rise	ASTM D 2671	1.800 vpm
Heavy Metals	USP Method 22	1.0 ppm max.
Water Absorption 24 hours @ 302°F	ASTM D 2671	0.5% max.
Specific Gravity	ASTM D 792	0.93 nom.



Pro-Power TYPE NO.	SIZE IN.	SPOOL SIZE (Feet)	EXPANDED I.D. MINIMUM		RECOVERED I.D. MAXIMUM		RECOVERED WALL NOMINAL	
			IN.	MM	IN.	MM	IN.	MM
3556	1/16	25	0.063	1.60	0.031	0.79	0.017	0.43
3560	1/16	100						
3557	3/32	25	0.093	2.36	0.046	1.17		
3561	3/32	100						
3558	1/8	25	0.125	3.18	0.062	1.58	0.020	0.51
3562	1/8	100						
3520	3/16	25	0.187	4.75	0.093	2.36		
3532	3/16	100						
3521	1/4	25	0.250	6.35	0.125	3.18		
3533	1/4	100						
3522	3/8	25	0.375	9.53	0.187	4.75	0.025	0.64
3534	3/8	100						
3523	1/2	25	0.500	12.70	0.250	6.35		
3535	1/2	100						

DISCLAIMER: ALL STATEMENTS AND TECHNICAL INFORMATION CONTAINED HEREIN ARE BASED UPON INFORMATION AND/OR TESTS WE BELIEVE TO BE ACCURATE AND RELIABLE. SINCE CONDITIONS OF USE ARE BEYOND OUR CONTROL, THE USER SHALL DETERMINE THE SUITABILITY OF THE PRODUCT FOR THE INTENDED USE AND ASSUME ALL RISK AND LIABILITY WHATSOEVER IN CONNECTION THEREWITH.

TOLERANCES: UNLESS OTHERWISE SPECIFIED, DIMENSIONS ARE FOR REFERENCE PURPOSES ONLY.

DRAWN BY:	DATE:	DRAWING TITLE:			
HISHAM ODISH	8/16/00	FOOD-GRADE HEAT-SHRINK TUBING, CLEAR			
CHECKED BY:	DATE:	SIZE	DWG. NO.	ELECTRONIC FILE	REV
JOHN COLE	12/20/00	A	TA-280-2	TA-280-2.DWG	B
APPROVED BY:	DATE:	SCALE:	NTS	U.O.M.: INCHES [mm]	SHEET: 1 OF 1
DANIEL CAREY	2/13/01				