

TECHNICAL CHARACTERISTICS

SPECIFICATION

- >Rating: 50mA, 12VDC
- >Contact Resistance:
 - Initial: 100mOHM max.
 - After Life Test: 20HM max.
- >Insulation Resistance: min. 100MOHM at 500VDC
- >Dielectric Strength: 250VAC for 1 minute
- >Stroke: 0.3 ± 0.1 mm

MATERIAL

- >Cover: Stainless Steel
- >Stem: LCP UL 94V-0
- >Frame: LCP UL 94V-0, color Black
- >Contact: Stainless Steel with silver cladding
- >Terminal: copper alloy with tin plating
- >Tape: Polyimide tape

SOLDERING INFORMATION

- >Terminal in THT version
- >Wave soldering 260°C 10 sec. max.
- >Hand soldering under 350°C for 3 sec. max

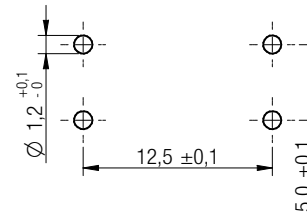
ENVIRONMENTAL

- >Storage condition: -40°C ~ +85°C
- >Operation condition: -40°C ~ +85°C
- >Compliance: Lead Free, ROHS, Reach

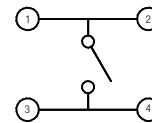
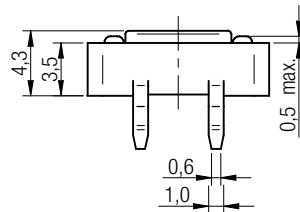
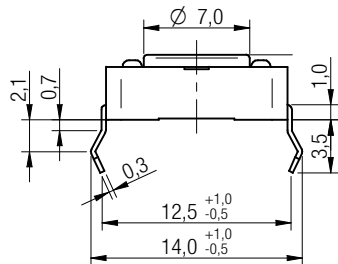
PACKAGING INFORMATION

>Bulk

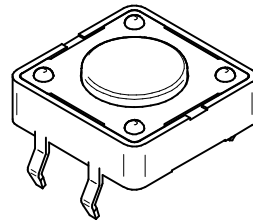
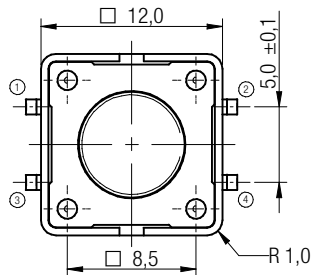
PN	Force	Color of Stem	Life cycle
430 476 043 716	160g ± 50gf	Black	500.000
430 466 043 726	260g ± 70gf	White	300.000
430 456 043 736	360g ± 90gf	Salmon	200.000



P.C.B. MOUNTING PLAN



SCHEMATIC



Scale - 2:1

		Projection		GENERAL TOLERANCE		Basic material				
				.x = +/- 0,2 .xx = +/- 0,15						
				Date	Name	DESCRIPTION				
				Drawn	11-02-14	Jelisarow	SwTSW			
				Checked			WS-TSW 12x12mm washable Tact Switch, THT version			
				Würth Elektronik eiCan		Scale	2:1	Position		SIZE
a	Material of Frame	11-04-12	WJ			Drawing.- No. 4304x60437x6				A4
REV	FILE	DATE	BY	EDV NO	4304x60439x6.dft		System Solid Edge V20			