

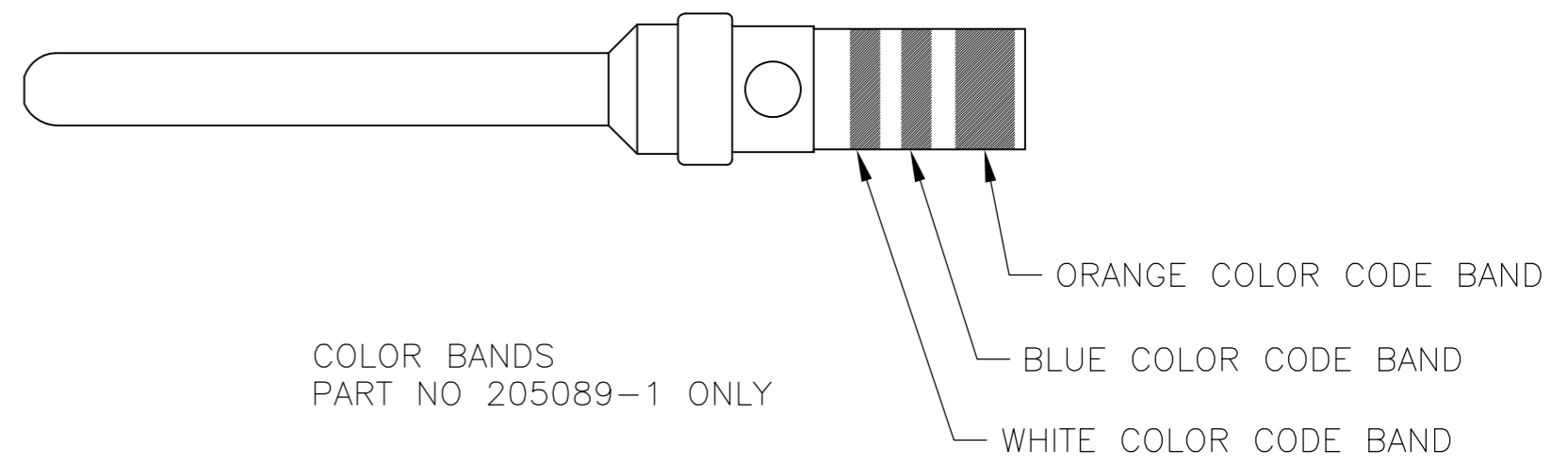
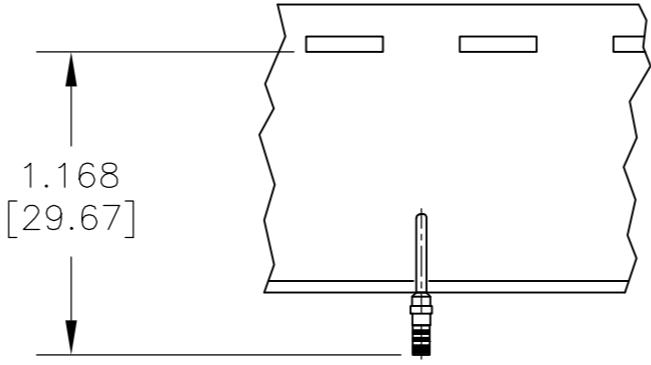
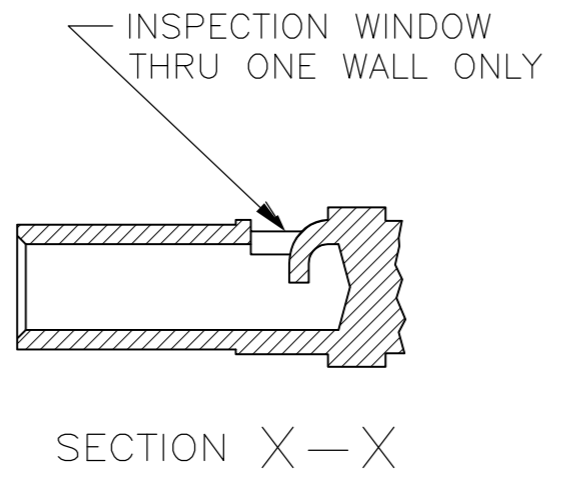
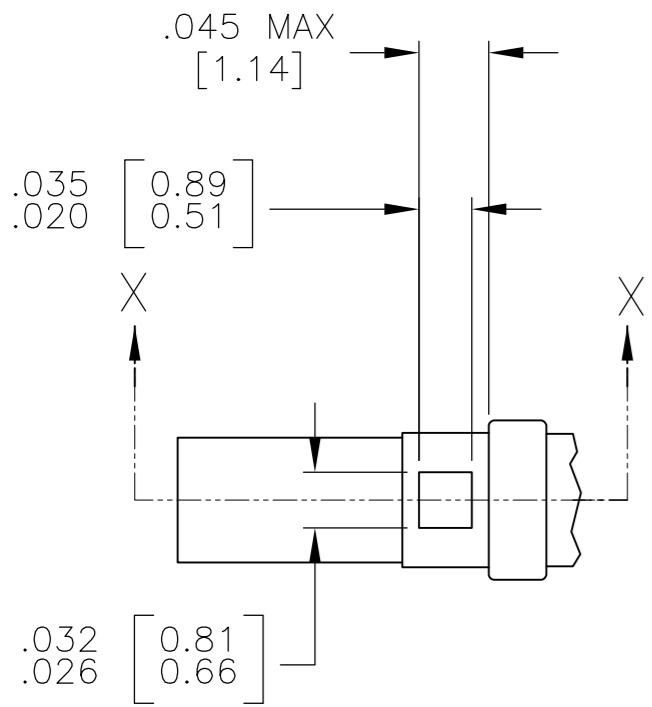
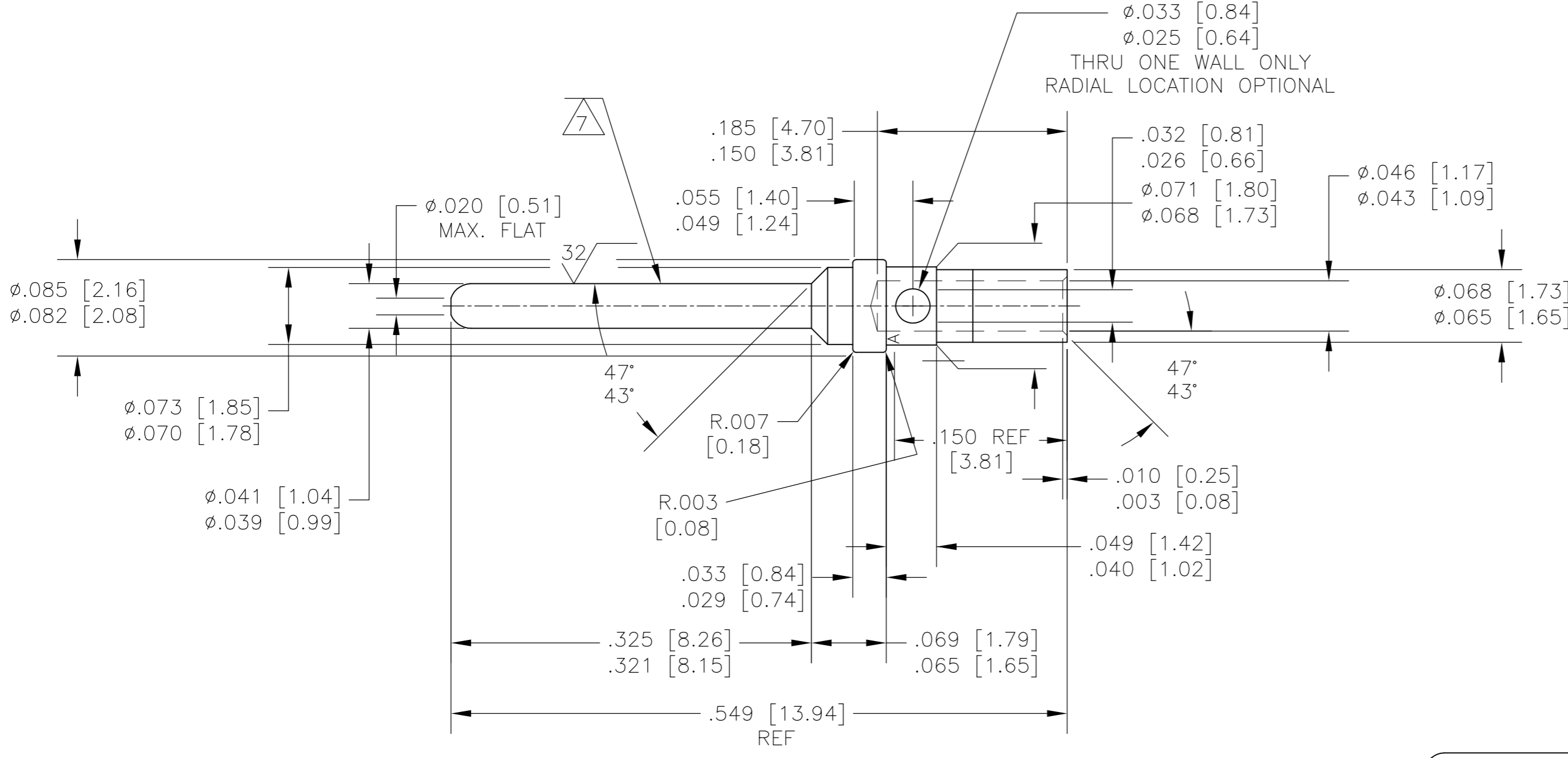
THIS DRAWING IS UNPUBLISHED. RELEASED FOR PUBLICATION  
 © COPYRIGHT - By - ALL RIGHTS RESERVED.

LOC		DIST		REVISIONS			
P	LTR	DESCRIPTION	DATE	DWN	APVD		
	U	REV PER ECO-10-020411	02DEC10	SK	RL		

WHEN ORDERING CONTACT ON TAPE, ORDER BY THE TAPE NUMBER PLUS THE PACKAGING CODE AS FOLLOWS:

- FOR USE WITH AMP TAPETRONIC, PNEUMATIC TOOL-  
A. 1000 PARTS TO A BOX ADD PACKAGING CODE: 1MBOX
- FOR USE WITH 4/8 INDENT STRIPPER CRIMP-  
A. 1000 PARTS TO A REEL ADD PACKAGING CODE: 1MREEL  
B. 5000 PARTS TO A REEL ADD PACKAGING CODE: 5MREEL

- MATERIAL: COPPER ALLOY PER MIL-C-39029 & MIL-DTL-24308.
- ALL DIMENSIONS APPLY AFTER PLATING.
- THIS DRAWING COMPLIES WITH SPECIFICATION MIL-C-39029/64 & M24308/11-1.
- ALL DIAMETERS CONCENTRIC WITH EACH OTHER WITHIN .004 T.I.R.
- PIN MATES WITH SOCKET 205090 (MIL-C-39029/63).
- ALL SURFACES HAVE  $\sqrt{63}$  OR BETTER FINISH, UNLESS SHOWN.
- POINT OF PLATING MEASUREMENT .188 [4.78] FROM TIP OF PIN.
- PLATING: GOLD PER ASTM-B-488 (TYPE II) OVER NICKEL PER QQ-N-290.
- PLATING: GOLD PER ASTM-B-488 (TYPE II) OVER COPPER PER MIL-C-14550, CLASS 4.
- PLATING: GOLD PER ASTM-B-488 (TYPE II, CLASS 0) OVER NICKEL PER QQ-N-290.
- PLATING:  
MATING AREA: GOLD PER ASTM-B-488 (TYPE II) OVER NICKEL PER QQ-N-290.  
NON MATING AREA: GOLD PER ASTM-B-488 OVER NICKEL PER QQ-N-290.



WITHOUT COLOR CODE	8	1-205089-1
WITHOUT COLOR CODE	10	1-205089-0
WITHOUT COLOR CODE	9	205089-4
CONTACT ON TAPE	SAME AS -1	205089-2
AS SHOWN	11	205089-1
DESCRIPTION	PLATING	PART NO.

THIS DRAWING IS A CONTROLLED DOCUMENT.		DWN J. KAISER 25AUG2003	TE Connectivity	
DIMENSIONS: INCHES		CHK D. MILLER 10-13-03	NAME PIN SIZE 20 CONTACT, AMPLIMITE	
TOLERANCES UNLESS OTHERWISE SPECIFIED: 0 PLC ± - 1 PLC ± - 2 PLC ± - 3 PLC ± - 4 PLC ± - ANGLES ± -		APVD D. MILLER 10-13-03	SIZE A2	CAGE CODE 00779
MATERIAL 1		FINISH -	DRAWING NO C=205089	RESTRICTED TO -
		WEIGHT -	SCALE 10:1	SHEET 1 of 1
		CUSTOMER DRAWING	REV U	