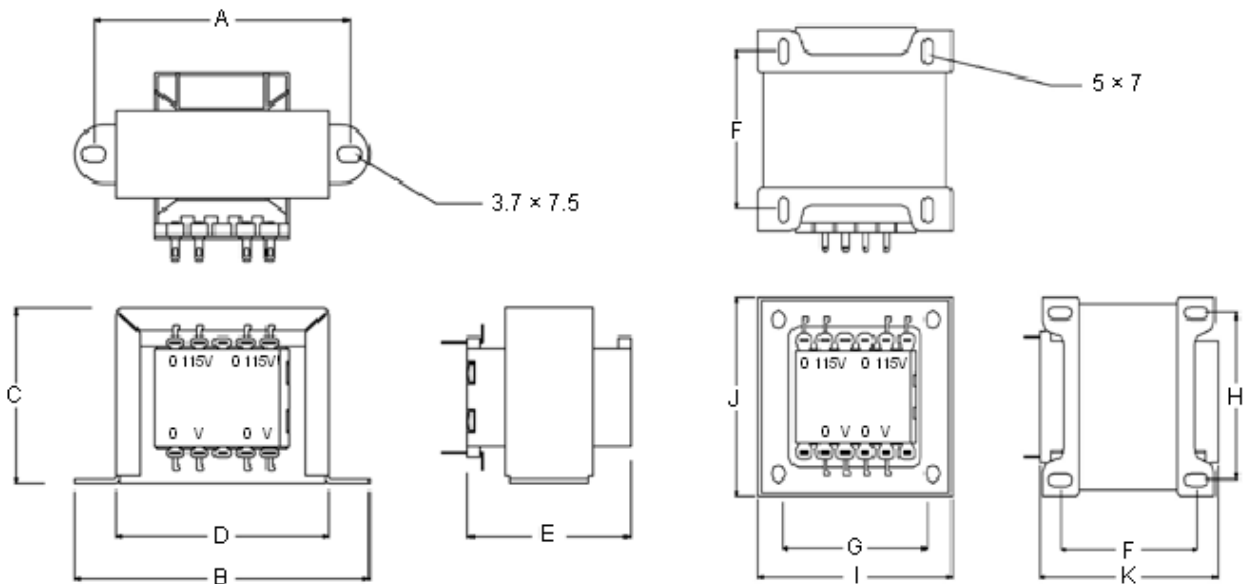
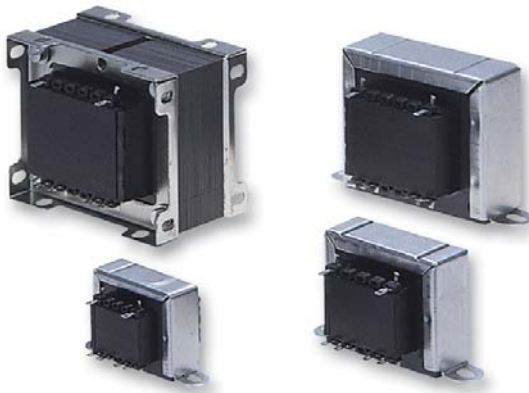


Transformers

Chassis Mount

Features:

- Dual 115 V primary windings
- Double section metric bobbins
- Power : 6 to 200 VA, 50 / 60 Hz
- Temperature class : B (130°C)
- Dielectric strength : 3,750 V_{rms}
- Manufactured and tested in accordance with EN60950 and EN61558



Dimensions : Millimetres

Specifications:

- Maximum winding temperature : 55°C
 Overall insulation rating : > 50 MΩ (at 500 V, 20°C)
 Flash test (isolation test) : Primary / secondary / lamination 2.4 kV_{rms}
 Winding wire : Polyurethane coated IEC317 grade 1
 Tape : 3M no 56 or 36M no 1350Y thermosetting
 Core : 400 / 50
 Finish : Ultimeg 3.72 clear

Dimension Table

Dimensions													
VA Rating	Reg%	A	B	C	D	E	F	G	H	I	J	K	Weight (g)
6	24	55	68	37	45	36							170
12	16	74	90	50	60	45	-	-	-	-	-	-	390
20	12					52							530
25	10	83	97	5	69	53							675

Dimensions : Millimetres

Transformers

Chassis Mount

Dimension Table

Dimensions													
VA Rating	Reg%	A	B	C	D	E	F	G	H	I	J	K	Weight (g)
50	9	94	106	65	79	53	-	-	-	-	-	-	985
75	8	-	-	-	-	-	55	54		80	67	71	1,480
100	10						45	57	57	89	75	65	1,550
200	8						68	72	56	102	85		2,750
Tolerance	2	±1											approximate

Dimensions : Millimetres

Specifications Table

Description	VA	Output V _{ac}	Part Number
Transformer, 6 VA 2 × 4.5 V	6	2 × 4.5	CTFC6-4.5
Transformer, 6 VA 2 × 6 V		2 × 6	CTFC6-6
Transformer, 6 VA 2 × 9 V		2 × 9	CTFC6-9
Transformer, 6 VA 2 × 12 V		2 × 12	CTFC6-12
Transformer, 6 VA 2 × 15 V		2 × 15	CTFC6-15
Transformer, 12 VA, 2 × 9 V	12	2 × 9	CTFC12-9
Transformer, 12 VA, 2 × 12 V		2 × 12	CTFC12-12
Transformer, 12 VA, 2 × 15 V		2 × 15	CTFC12-15
Transformer, 12 VA, 2 × 20 V		2 × 20	CTFC12-20
Transformer, 12 VA, 2 × 24 V		2 × 24	CTFC12-24
Transformer, 20 VA, 2 × 9 V	20	2 × 9	CTFC20-9
Transformer, 20 VA, 2 × 12 V		2 × 12	CTFC20-12
Transformer, 20 VA, 2 × 15 V		2 × 15	CTFC20-15
Transformer, 20 VA, 2 × 18 V		2 × 18	CTFC20-18
Transformer, 20 VA, 2 × 20 V		2 × 20	CTFC20-20
Transformer, 20 VA, 2 × 24 V		2 × 24	CTFC20-24
Transformer, 50 VA 2 × 6 V	50	2 × 6	CTFC50-6
Transformer, 50 VA 2 × 9 V		2 × 9	CTFC50-9
Transformer, 50 VA 2 × 12 V		2 × 12	CTFC50-12
Transformer, 50 VA 2 × 15 V		2 × 15	CTFC50-15
Transformer, 50 VA 2 × 18 V		2 × 18	CTFC50-18
Transformer, 50 VA, 2 × 24 V		2 × 24	CTFC50-24
Transformer, 75 VA, 2 × 9 V	75	2 × 9	CTFC75-9
Transformer, 75 VA, 2 × 20 V		2 × 20	CTFC75-20
Transformer, 100 VA, 2 × 9 V	100	2 × 9	CTFC100-9
Transformer, 100 VA, 2 × 12 V		2 × 12	CTFC100-12
Transformer, 100 VA, 2 × 20 V		2 × 20	CTFC100-20

Important Notice : This data sheet and its contents (the "Information") belong to the members of the Premier Farnell group of companies (the "Group") or are licensed to it. No licence is granted for the use of it other than for information purposes in connection with the products to which it relates. No licence of any intellectual property rights is granted. The Information is subject to change without notice and replaces all data sheets previously supplied. The Information supplied is believed to be accurate but the Group assumes no responsibility for its accuracy or completeness, any error in or omission from it or for any use made of it. Users of this data sheet should check for themselves the Information and the suitability of the products for their purpose and not make any assumptions based on information included or omitted. Liability for loss or damage resulting from any reliance on the Information or use of it (including liability resulting from negligence or where the Group was aware of the possibility of such loss or damage arising) is excluded. This will not operate to limit or restrict the Group's liability for death or personal injury resulting from its negligence. Pro-POWER is the registered trademark of the Group. © Premier Farnell plc 2011.