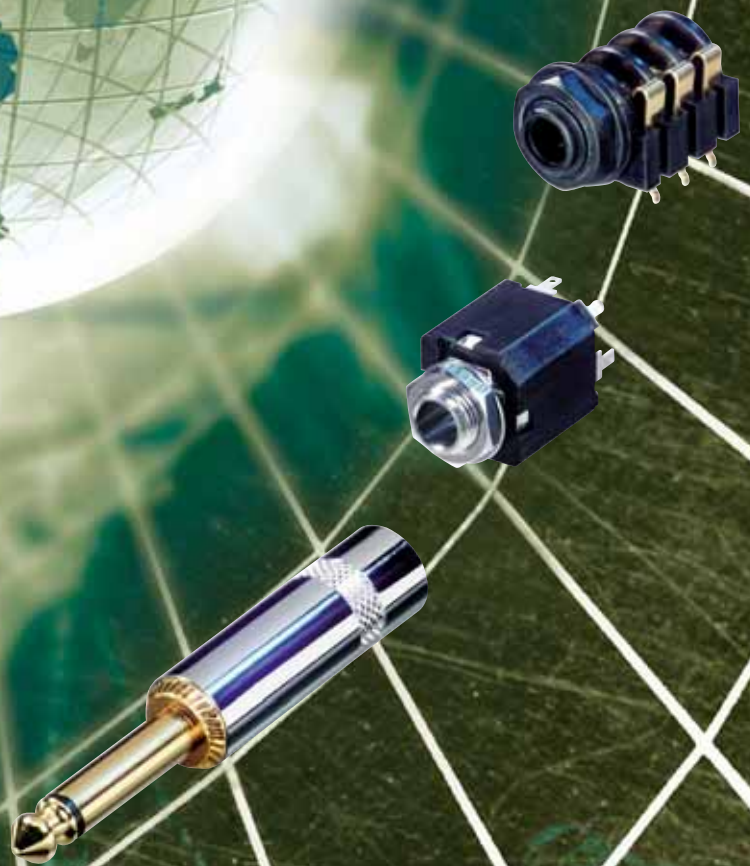


NYS Product Guide



**NEUTRIK**

CONNECTING THE WORLD

# Plugs



## 1/4" and 3.5 mm Phone Plugs



NYS 204



NYS 208



NYS 224G

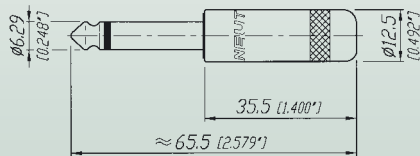


NYS 225B

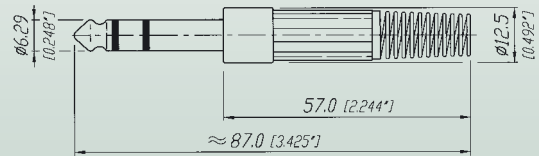
- Commercial 1/4" plugs and adapters
- All connectors acc. EIA RS-453 / IEC 60603-11
- Short and long turned brass handles
- Plastic handle with flexible strain relief
- Heavy duty cable clamp for best strain relief

- Available in nickel, gold and black plating
- Large cable outlet and solder tabs
- Right angle version
- "Silent switch" on plug finger helps eliminate "pop" during insertion and withdrawal

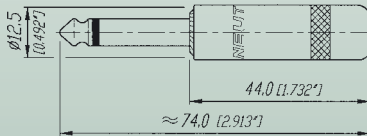
**NYS 201**



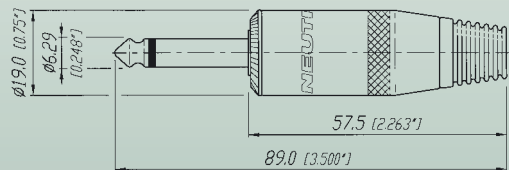
**NYS 204**



**NYS 224**



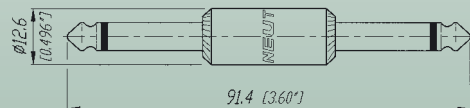
**NYS 225**



**NYS 231**



**NYS 237**



## Ordering Information

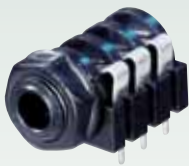
Type No.	Mono 2 Pole	Stereo 3 Pole	Description	Cable O.D.	Compatibility
<b>1/4" plug short handle</b>					
NYS 201	●		Short turned brass handle	6 mm	S/C 280
NYS 202		●	Short turned brass handle	6 mm	S/C 297
<b>1/4" plug plastic handle</b>					
NYS 203	●		Plastic handle with flexible strain relief	6 mm	S/C 250
NYS 204		●	Plastic handle with flexible strain relief	6 mm	S/C 267
<b>1/4" plug right angle</b>					
NYS 207	●		Metal housing, plastic bushing	6 mm	S/C 226
NYS 208		●	Metal housing, plastic bushing	6 mm	S/C 236
<b>1/4" plug long handle</b>					
NYS 224	●		Long turned brass handle, no rivet	6 mm	S/C 285
NYS 224G	●		With gold plated contacts	6 mm	S/C 285
NYS 224BG	●		With black metal handle, gold plated contacts	6 mm	S/C 285
NYS 224GT	●		With gold plated tip contact	6 mm	S/C 285
NYS 224AG	●		With gold plated shell and contacts	6 mm	S/C 285
NYS 224L	●		With large cable outlet	8 mm	S/C 285L
NYS 224S	●		With tip switched to ground if not inserted (silent)	6 mm	S/C 285
NYS 228		●	Stereo version of 224	6 mm	S/C 297
NYS 228BG		●	With black metal handle, gold plated contacts	6 mm	S/C 297
NYS 228G		●	With gold plated contacts	6 mm	S/C 297
NYS 228GT		●	With gold plated tip contact	6 mm	S/C 297
<b>1/4" plug with large shell for speaker cable</b>					
NYS 225	●		Large metal handle, rubber bushing	8 mm	S/C 187
NYS 225B	●		With black metal handle	8 mm	S/C 187B
NYS 225L	●		With large cable outlet	9 mm	
NYS 225S	●		With tip switched to ground if not inserted (silent)	8 mm	
<b>1/4" plug adapter</b>					
NYS 237	●		Mono plug adapter to mate standard 1/4" jacks, full metal		
NYS 239		●	Stereo plug adapter to mate standard 1/4" jacks, full metal		
<b>3.5 mm plug</b>					
NYS 226	●		Metal handle with crimp strain relief	4 mm	
NYS 226B	●		With black metal handle	4 mm	
NYS 226BG	●		With black metal handle, gold plated contacts	4 mm	
NYS 226G	●		With gold plated contacts	4 mm	
NYS 226L	●		With large cable outlet	6 mm	
NYS 227		●	3.5 mm plug to 1/4" stereo jack, all metal	-	
NYS 231		●	Metal handle with crimp strain relief	4 mm	S/C 35HDNN
NYS 231B		●	With black metal handle	4 mm	
NYS 231BG		●	With black metal handle, gold plated contacts	4 mm	S/C 35HDBAU
NYS 231G		●	With gold plated contacts	4 mm	
NYS 231L		●	With large cable outlet	6 mm	



# Jacks



## 1/4" Phone Jacks



NYS 216  
Horizontal Jack



NYS 220  
Long Bushing



NYS 230  
Open Jack



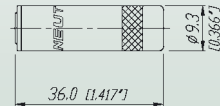
NYS 234  
Vertical Jack

- Robust and reliable jacks in metal or plastic housing
- Horizontal and vertical PCB mount
- Extra long-threaded bushing for thick panel and guitar bodies
- Plastic nut or chrome ferrule nut
- Kinked solder pins secure jack to PCB

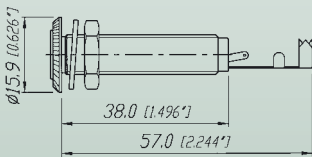
### NYS 2202P



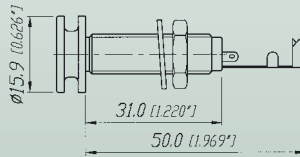
### NYS 240



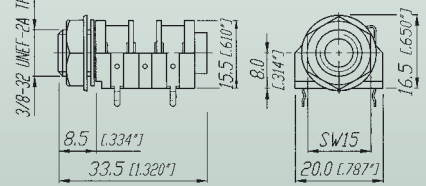
### NYS 220



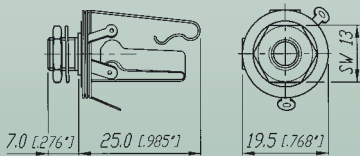
### NYS 221



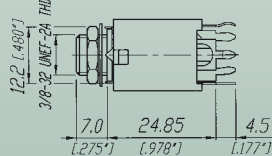
### NYS 2162



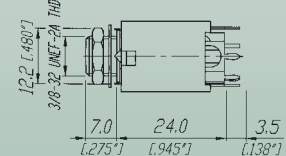
### NYS 230



### NYS 232



### NYS 234

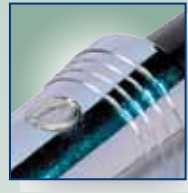


# J a c k s

## Ordering Information

Type No.	Mono 2 Pole	Stereo 3Pole	Description	Distance to PCB	Compatibility
<b>1/4" Long bushing jacks</b>					
NYS 2202	●		Jack for thick panels, long-threaded bushing with washer and nut, full metal	-	S/C 151
NYS 2203		●	Jack for thick panels, long-threaded bushing with washer and nut, full metal	-	S/C 152B
NYS 221		●	Jack with special designed head for guitar strap, for thick panels, long-threaded bushing with washer and nut, full metal	-	
<b>Cable jacks</b>					
NYS 2202P	●		1/4" Mono cable jack with metal handle, max. cable O.D. 6.0 mm	-	
NYS 2203P		●	1/4" Stereo cable jack with metal handle, max. cable O.D. 6.0 mm	-	
NYS 240		●	3.5 mm stereo cable jack with metal handle, max. cable O.D. 4.0 mm	-	
NYS 240BG		●	With black metal handle, gold plated contacts, max. cable O.D. 4.0 mm	-	
NYS 240L		●	With large cable outlet, max. cable O.D. 6.0 mm	-	
<b>1/4" Horizontal jacks (all contacts switched)</b>					
NYS 212		●	Plastic housing with nut and washer, solder tap version	-	
NYS 2122	●		Plastic housing with nut and washer, solder tap version	-	
NYS 215		●	With chrome ferrule nut	8.2 mm	
NYS 2152	●		With chrome ferrule nut	8.2 mm	
NYS 2152G	●		With chrome ferrule nut and gold contact	8.2 mm	
NYS 216		●	Plastic housing with nut and washer	8.2 mm	
NYS 2162	●		Plastic housing with nut and washer	8.2 mm	
NYS 216G		●	With gold contact	8.2 mm	CLIFF S2/PC-C
NYS 218		●	With extra long contacts	15 mm	
NYS 2182	●		With extra long contacts	15 mm	
NYS 219		●	With long contacts	12.5 mm	
NYS 2192	●		With long contacts	12.5 mm	
<b>1/4" Open jacks</b>					
NYS 229	●		2 contacts, with washer und nut, panel thickness 3.5 mm	-	S/C 11
NYS 229L	●		2 contacts, with longer threaded nose, washer and nut, panel thickness 6.5 mm, with 0.205" faston tabs	-	
NYS 230		●	3 contacts, with washer and nut, panel thickness 3.5 mm	-	S/C 12B
<b>1/4" Vertical jacks</b>					
NYS 232		●	Plastic housing, metal washer and nut, with tip and ring normalling contacts	24.85 mm	S/C HiD-range
NYS 234		●	Plastic housing, metal washer and nut, with tip and ring normalling contacts	24.0 mm	S/C HiD-range
NYS 2343		●	Plastic housing, metal washer and nut, no normalling contacts	24.0 mm	S/C HiD-rang
<b>Phone jack adapter</b>					
NYS 236	●		1/4" jack adapter to mate with standard 1/4" plug, full metal	-	
NYS 238		●	1/4" jack adapter to mate with standard 1/4" plug, full metal	-	

# Phono "RCA" & DIN Connectors



## Phono ("RCA/Cinch")

## DIN Connectors



NYS 352G



NYS 354



NYS 355



NYS 373-6



NYS 322



NYS 324

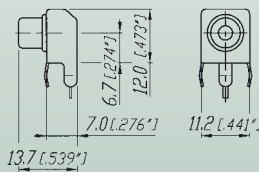
- Heavy duty phono plugs
- All metal
- Cable O.D. up to 6 mm (0.25")
- Cable clamp or chuck type strain relief
- Phono receptacle for PCB-mounting
- Phono to phono female adapter

- Male cable connectors with turned brass
- shell
- Flexible bushing
- Gold or silver-plated-non-tarnishing contacts
- Heavy duty cable clamp
- Female receptacle, stamped housing
- Complete shielding with ground contact
- Nickel-plated shell

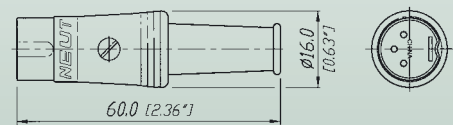
NYS 352



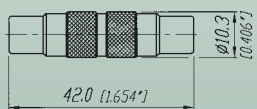
NYS 354



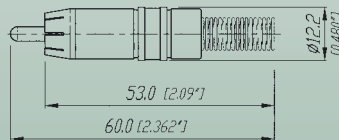
NYS 321



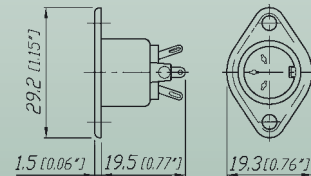
NYS 355



NYS 373-\*



NYS 324



## Ordering Information

Type No.	Description	Cable O.D.	Compatibility
<b>Phono ("RCA/Cinch")</b>			
NYS 352	Phono plug	7.2 mm	
NYS 352B	Phono plug with black metal handle	7.2 mm	
NYS 352G	Phono plug with gold plated contacts	7.2 mm	S/C 3502L/3502A
NYS 352AG	Phono plug, all gold plated	7.2 mm	
NYS 352BG	Phono plug with gold plated contacts and black metal handle	7.2 mm	S/C 3502 ABAU
NYS 354	Phono receptacle, PCB-mount, max. Panel thickness 1.2 mm	-	
NYS 355	Phono to phono female adapter	-	S/C 349A
NYS 367-*	Phono chassis mount socket, gold plated contacts, color coding	-	
NYS 372P	Phono jack with nickel plated contacts and handle	7.2 mm	
NYS 372P-BG	Phono jack with gold plated contacts and black plated handle	7.2 mm	
NYS 373-*	Phono plug with gold plated contacts, black chromium shell, chuck type strain relief	3.0-6.1 mm	
	*: 0-Black, 2-Red, 4-Yellow, 5-Green, 6-Blue, 9-White		
<b>DIN male cable connector</b>			
NYS 321	3-pole, silver plated contacts	5.0 mm	
NYS 321G	3-pole with gold plated contacts	5.0 mm	
NYS 322	5-pole, silver plated contacts	5.0 mm	
NYS 322G	5-pole with gold plated contacts	5.0 mm	
NYS 322AG	5-pole with gold plated shell and contacts	5.0 mm	
NYS 323	7-pole, silver plated contacts	5.0 mm	
NYS 323G	7-pole with gold plated contacts	5.0 mm	
<b>DIN female chassis connector</b>			
NYS 324	3-pole, silver plated contacts	-	
NYS 325	5-pole, silver plated contacts	-	
NYS 326	7-pole, silver plated contacts	-	

# Patch Box & Stage Box



## Patch Box

## Stage Box



NYS-SSR-8



NSB2A-20/4



NSB2B-12/4

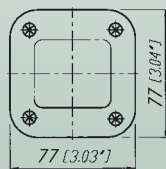
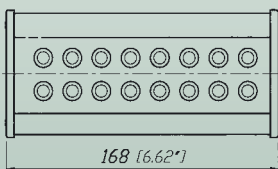


NSB1C-8/0

- "The Easy Way to Link your Audio System"
- 1/4" Patch Box with 8 Send/Return moduls (Split Print)
- Metal housing - reliable and robust
- Easy to assemble, simple to use

- Modular system for individual size and configuration
- Designed to offer in an individual combination of connectors for "IN" and "OUT" and length
- Easy to assemble
- 3 pole XLR IDC receptacles eliminate stripping and tinning of wires
- Luminescent, self-adhesive labels for connector identification
- Extremely price competitive

### NYS SSR-8





## Ordering Information

(Supplied as disassembled set comprising of all hardware parts including plates, profiles, strain relief, endpieces and screws.)

### Patch Box

NYS-SSR-8 1/4" Patch Box with 8 Send/Return Moduls (Split Print)

### Stage Box

#### Type A

NSB1A-8/4 Length 1, 8 IN (Female/Send) and 4 OUT (Male/Return)

NSB2A-20/4 Length 2, 20 IN (Female/Send) and 4 OUT (Male/Return)

NSB3A-32/4 Length 3, 32 IN (Female/Send) and 4 OUT (Male/Return)

#### Type B

NSB1B- 8/0 Length 1, 8 IN (Female/Send)

NSB2B-12/4 Length 2, 12 IN (Female/Send) and 4 OUT (Male/Return)

NSB3B-20/4 Length 3, 20 IN (Female/Send) and 4 OUT (Male/Return)

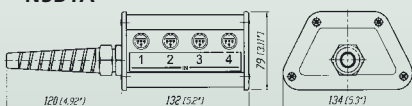
#### Type C

NSB1C- 8/0 Length 1, 8 IN (Female/Send)

NSB2C-12/4 Length 2, 12 IN (Female/Send) and 4 OUT (Male/Return)

NSB3C-20/4 Length 3, 20 IN (Female/Send) and 4 OUT (Male/Return)

#### Type A NSB1A



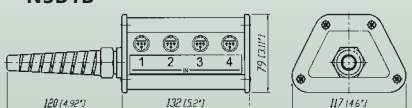
#### NSB2A



#### NSB3A



#### Type B NSB1B



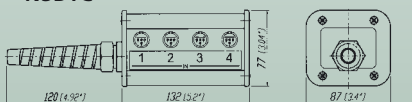
#### NSB2B



#### NSB3B



#### Type C NSB1C



#### NSB2C



#### NSB3C



# Dual Banana Plug



## Dual Banana Plug



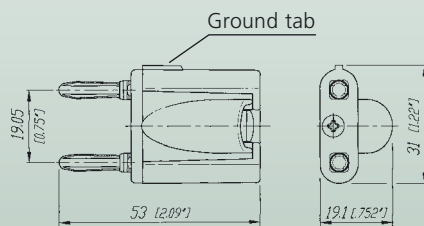
NYS 508-R



NYS 508-B

- Cable strain relief: teathed cable clamp featuring cable O.D. 6 - 10.5 mm
- Protection against electric shock: cable ends and plugs are completely covered in mated condition
- Gold plated contacts for tarnish resistance & long insertion life

### NYS 508-\*



# Technical Data

Specification	Phone Plugs	Phone Jacks	Phono ("RCA/Cinch)	DIN Connectors	Dual Banana Plug
---------------	-------------	-------------	-----------------------	----------------	---------------------

## Electrical

Rated current	Depends on mating connector	●	●	●	●	20 A
Contact resistance	Depends on mating connector	●	●	●	●	-
Insulation Resistance	≥ 1 GΩ	●	●	●	●	●
Dielectric strength	500 V dc	●	●	●	●	●

## Mechanical

Life Cycles		5'000	5'000	5'000	1'000	5'000
Insertion / withdrawal force ≤ 20 N / ≥ 10 N		-	●	-	-	-
Cable O.D.	See ordering information	-	-	See ordering information	5 mm	6 - 10.5 mm
Panel Thickness		-	See ordering information	-	-	-
Solderability complies with IEC68-2-20		●	●	●	●	-
Operating Temperature		-25°C to +70°C	-25°C to +70°C	-25°C to +70°C	-25°C to +70°C	-25°C to +50°C

## Material

Housing/Handle	- Brass Ni/Au/black plated	●	●	●	●	-
	- Zinc Diecast	NYS 207/208/225*	-	-	-	-
	- Steel, Ni plated	-	-	-	NYS 324/325/326	-
Insulation	- Thermoplastic	●	●	●	●	●
Contacts	- Brass, Ni/Au plated	●	●	●	●	●
Strain Relief	- Crimp type SnCe plated	●	-	●	-	-
	- Crimp type Zn plated	-	-	-	●	-
	- Chuck type (POM)	-	-	NYS 373	-	-
	- Teethed cable clamp	-	-	-	-	●

Specification	1/4" Patch Box	Stage Box
---------------	-------------------	--------------

## Electrical

Rated current	Depends on mating connector	●	2 A
Contact resistance	Depends on mating connector	●	< 5 mΩ
Insulation Resistance	≥ 1 GΩ	●	●
Dielectric strength	500 V dc	●	●

## Mechanical

Life Cycles		> 10 000	> 1 000
Insertion / withdrawal force ≤ 20 N / ≥ 10 N	●	≤ 10 N / ≥ 10 N	
Multicore cable O.D.		-	15 / 20 mm
Applicable wire size		-	0.22 mm <sup>2</sup> / 24 AWG and 0.14 mm <sup>2</sup> / 26 AWG
Operating Temperature	-25°C to +70°C	●	●

## Material

Housing		Aluminium	Aluminium
Quad Plates		-	POM
End Pieces	- Thermoplastic	●	●
Contacts	- Brass / Bronze	Ni plated	Au plated

### Part Number Coding:

B ..... black handle  
 G ..... gold plated contacts  
 GT .... gold plated tip contact  
 L ..... large cable outlet

S ..... silent switch  
 AG ... all gold, gold plated contacts and shell  
 BG ... black handle, gold plated contacts

For more information please contact your local Neutrik agent.

Great Britain  
Neutrik (UK) Ltd.  
Westridge Business Park  
Cothey Way  
Ryde, Isle of Wight PO33 1QT  
++44/1983/811 441  
sales@neutrik.co.uk

Japan  
Neutrik Limited  
Kikuta Bldg., 3-12-12  
Higashinonbashi, Chuo-ku  
Tokyo 103  
++81/3/3663 47 33  
mail@neutrik.co.jp

Switzerland  
Neutrik Zürich AG  
Steinackerstrasse 35  
CH-8902 Urdorf  
++41/44/736 50 10  
neutrik@neutrik.ch

Germany/Netherlands/Austria  
Neutrik Vertriebs GmbH  
Felix-Wankel-Strasse 1  
D-85221 Dachau  
++49/8131/28 08 90  
info@neutrik.de

USA  
Neutrik USA Inc.  
195 Lehigh Avenue  
Lakewood, NJ 08701-4527  
++1/732/901 94 88  
info@neutrikusa.com

France  
Neutrik France  
Rue du Parchamp, 13  
F-92100 Boulogne-Billancourt  
++33/1/41 31 67 50  
info@neutrik-France.com

Hong Kong  
Neutrik Hong Kong LTD.  
Workshop 14, 16 Floor, Wah  
Wai Centre  
Nr. 38-40 Au Pui Wan Street  
Shatin, New Territories  
Hong Kong, HKSAR  
+852 2687 6055  
neutrik@neutrik.com.hk

w w w . n e u t r i k . c o m



**NEUTRIK**

CONNECTING THE WORLD