




Search

Part #/Keyword Cross - Reference » Advanced

HOME PRODUCTS DESIGN SUPPORT APPLICATIONS QUALITY MyON: Sign In or Register

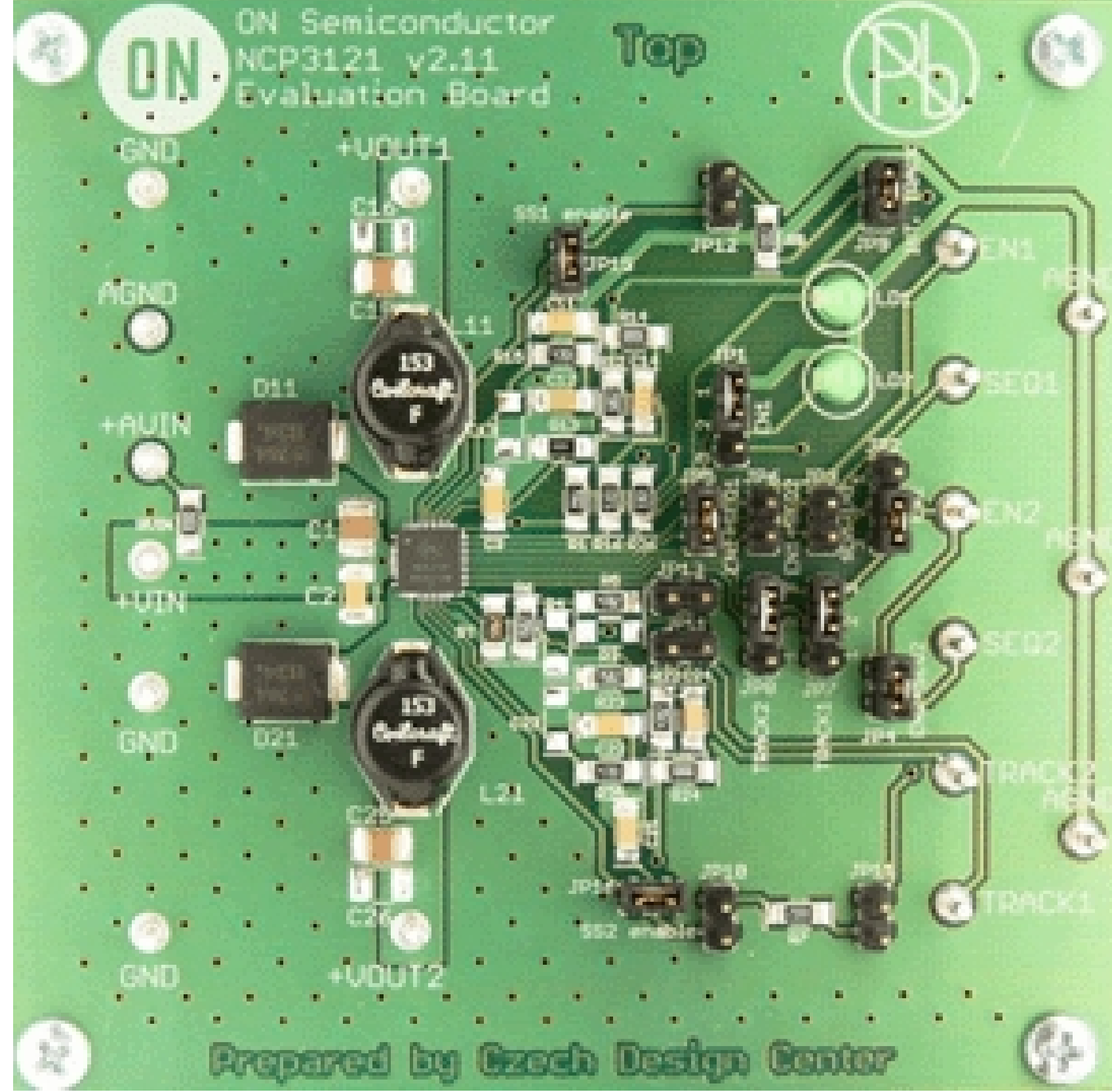
- Design Support
- Technical Documentation
- Design Resources
- Design & Development Tools
- Evaluation Boards
- Conversion Services
- Evaluation Board Documents
- Custom Foundry Services
- Sample Kits
- Simulation Models
- Product Recommendation Tools
- Software
- Video
- Technical Support

Home > Support > Design Support > Design Resources > Evaluation Boards

## NCP3121QPBACKGEVB:NCP3121 3A BUCK DEMO BD

### Evaluation Board Description

The NCP3121 is a dual 3.0 A DC -DC buck converter designed for low -voltage applications. The NCP3121 converter provides dual 3.0 A switching regulators with an adjustable 200 ? kHz switching frequency. The switching frequency is set by an external resistor. The NCP3121 also incorporates an auto - tracking and sequencing feature. Protection features include cycle - by - cycle current limit and under voltage lockout.



### Features and Applications

#### Features

- ? Input voltage range from 4.5 V to 13.2 V
- ? Output voltage range from 0.8 V to 12 V
- ? 12 Vin to 5.0 Vout, efficiency = 80% min. @ 2.0 A
- ? 200 to 750 kHz operation
- ? Stable with low ESR ceramic output capacitor
- ? External soft start
- ? Out -of -phase operation of OUT1 & OUT2
- ? Transconductance Error amp with external compensation
- ? Auto tracking and sequencing
- ? Enable/disable capability
- ? Thermal shutdown
- ? Under voltage lockout
- ? Hiccup overload protection

### Evaluation Board Information

Evaluation Board	Status	Pb-free	Short Description	Parts Used	Action
NCP3121QPBACKGEVB	Active	<input checked="" type="checkbox"/> Pb-free	NCP3121 3A BUCK DEMO BD	NCP3121MNTXG	Contact Local Sales Office

### Technical Documents

Type	Document Title	Document ID/Size	Rev
Eval Board: BOM	NCP3121QPBACKGEVB Bill of Materials (Rohs Compliant)	NCP3121QPBACKGEVB_BOM_ROHS.PDF - 228.0 KB	A
Eval Board: Gerber	NCP3121QPBACKGEVB Gerber Layout Files	NCP3121QPBACKGEVB_GERBERS.ZIP - 89.0 KB	0
Eval Board: Schematic	NCP3121QPBACKGEVB Schematic	NCP3121QPBACKGEVB_SCHEMATIC.PDF - 39.0 KB	0
Eval Board: Test Procedure	NCP3121QPBACKGEVB Test Procedure	NCP3121QPBACKGEVB_TEST_PROCEDURE.PDF - 1514.0 KB	0

### Previously Viewed Products

Select Product ...

Clear List

### Design Support

- Technical Documentation
- Design Resources
- Technical Support
- Sales Support