



Search

Part #/Keyword | Cross - Reference | » Advanced

HOME | PRODUCTS | DESIGN SUPPORT | APPLICATIONS | QUALITY | MyON: Sign In or Register

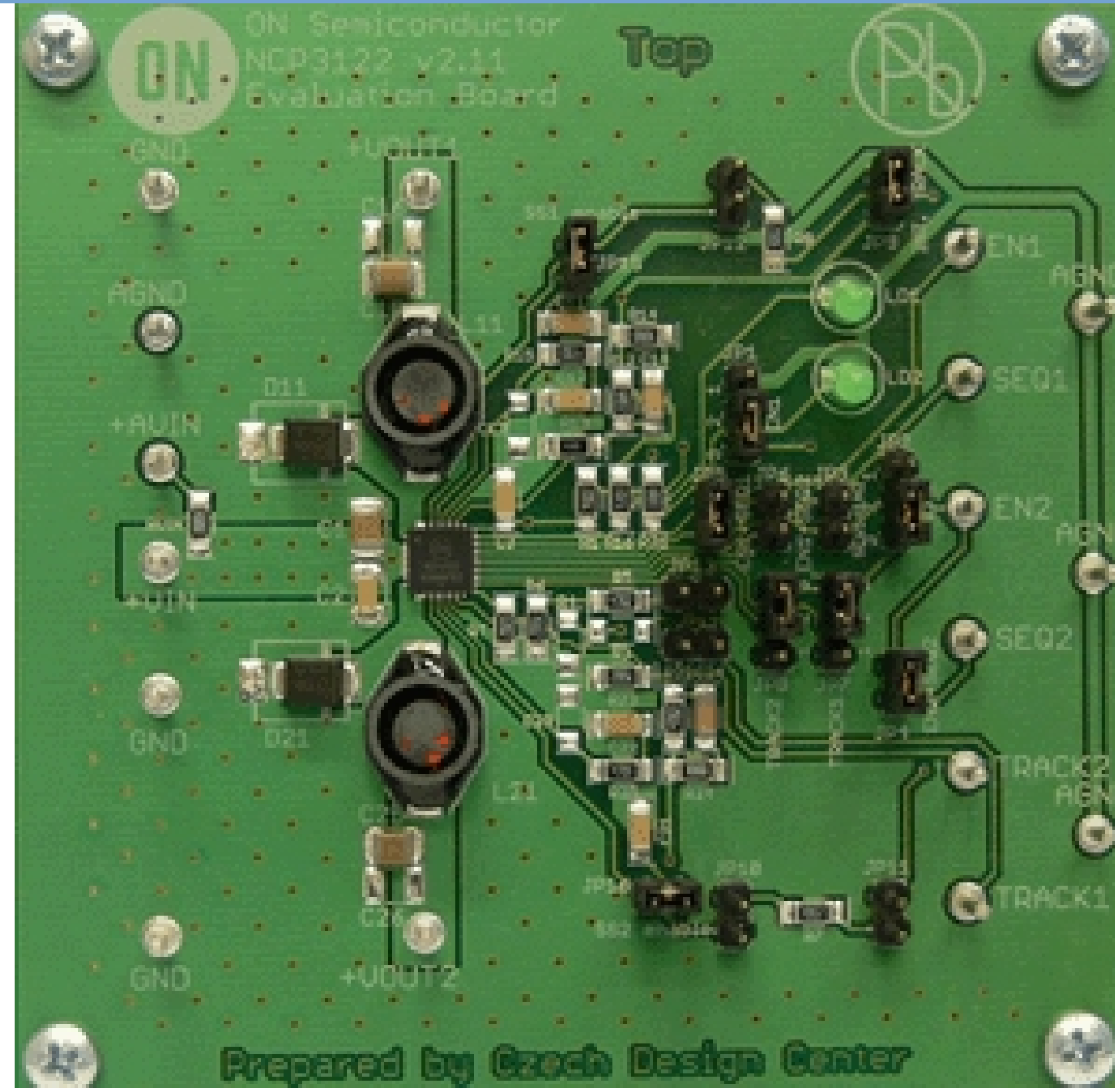
- Design Support
- Technical Documentation
- Design Resources
- Design & Development Tools
- Evaluation Boards
- Conversion Services
- Evaluation Board Documents
- Custom Foundry Services
- Sample Kits
- Simulation Models
- Product Recommendation Tools
- Software
- Video
- Technical Support

Home > Support > Design Support > Design Resources > Evaluation Boards

NCP3122QPBACKGEVB:NCP3122 2A HF BUCK DB

Evaluation Board Description

The NCP3122 is a dual 2.0 A DC/DC buck converter designed for low -voltage applications requiring high efficiency. The NCP3122 converter provides dual 2.0 A switching regulators with an adjustable 200 - 2200kHz switching frequency. The switching frequency is set by an external resistor. The NCP3122 also incorporates an auto - tracking and sequencing feature. Protection features include cycle -by-cycle current limit and under voltage lockout.



Features and Applications

Features

- ? Input voltage range from 4.5 V to 13.2 V
- ? Output voltage range from 0.8 V to 12 V
- ? 12 Vin to 5.0 Vout, efficiency = 87% min. at 2.0 A
- ? 200 - 2200 kHz operation
- ? Stable with low ESR ceramic output capacitor
- ? External soft start
- ? Out -of -phase operation of OUT1 & OUT2
- ? Transconductance Error amp with external compensation
- ? Auto -tracking and sequencing
- ? Enable/disable capability
- ? Thermal shutdown
- ? Under voltage lockout
- ? Hiccup overload protection
- ? Low shutdown power (Iq < 100 A)

Evaluation Board Information

Evaluation Board	Status	Pb-free	Short Description	Parts Used	Action
NCP3122QPBACKGEVB	Active	<input checked="" type="checkbox"/> Pb-free	NCP3122 2A HF BUCK DB	NCP3122MNTXG	Contact Local Sales Office

Technical Documents

Type	Document Title	Document ID/Size	Rev
Eval Board: BOM	NCP3122QPBACKGEVB Bill of Materials ROHS Compliant	NCP3122QPBACKGEVB_BOM_ROHS.PDF - 230.0 KB	A
Eval Board: Gerber	NCP3122QPBACKGEVB Gerber Layout Files (Zip Format)	NCP3122QPBACKGEVB_GERBER.ZIP - 91.0 KB	0
Eval Board: Schematic	NCP3122QPBACKGEVB Schematic	NCP3122QPBACKGEVB_SCHEMATIC.PDF - 376.0 KB	0
Eval Board: Test Procedure	NCP3122QPBACKGEVB Test Procedure	NCP3122QPBACKGEVB_TEST_PROCEDURE.PDF - 677.0 KB	0

Previously Viewed Products

Select Product ...

Clear List

Design Support

- Technical Documentation
- Design Resources
- Technical Support
- Sales Support