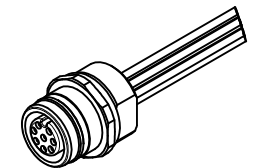
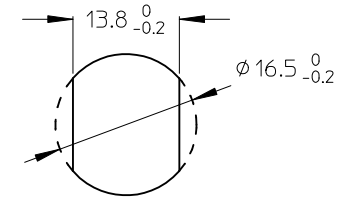


Wiring Diagram:

- 1 - WHITE / weiß
- 2 - BROWN / braun
- 3 - GREEN / grün
- 4 - YELLOW / gelb
- 5 - GREY / grau
- 6 - PINK / rosa
- 7 - BLUE / blau
- 8 - RED / rot

ITEM	COMPONENT	MATERIAL	FINISH
1	REC SHELL	BRASS	NICKEL PLATED
2	INSERT	PUR	BLACK
3	CONTACT	BRASS / GOLD	CuZn Ni/ Au
4	WIRES	COPPER/PVC	NONE
5	O-RING	NBR	BLACK
6	O-RING	VITON	RED
7	POTTING MATERIAL	EPOXY	NONE



POL	MATERIAL NO.	ENGINEERING NO.	FINISHED LENGTH
8	1200845095	WR8U20E02C300	300 ±10
8	1200845002	WR8U20E02M010	1000 ±10

VOLTAGE RATING: 30 VAC / 36 VDC  
 AMPERAGE RATING: 2 A  
 PROTECTION CLASS: IP 67/68/69K  
 OPERATING TEMPERATURE: -25°C / 90°C  
 UL CERTIFICATION: FILE NO. E152210  
 CSA CERTIFICATIONS: FILE NO. LR6837

ENTER DESCRIPTION EC NO: WEU2010-0298 DRWINSTAUDIGEL 2010/01/28 CHYKD: 2010/02/01 APPR:FPACHER 2010/02/02	QUALITY SYMBOLS ▽=0 ◻=0	GENERAL TOLERANCES (UNLESS SPECIFIED)		DIMENSION STYLE	SCALE	DESIGN UNITS	THIRD ANGLE PROJECTION	
				MM ONLY	2:1	METRIC		
				DRAWN BY	DATE	TITLE		
				NSTAUDIGEL 2010/01/28		M12U 8-P FEMALE REC FRONT M16X1,5 0,25MM2		
		CHECKED BY		DATE				
		APPROVED BY		DATE	MOLEX INCORPORATED			
		FPACHER		2010/02/01	SD-120084-019			
		MATERIAL NO.		DOCUMENT NO.		SHEET NO.		
						1 OF 1		
		DRAFT WHERE APPLICABLE MUST REMAIN WITHIN DIMENSIONS		THIS DRAWING CONTAINS INFORMATION THAT IS PROPRIETARY TO MOLEX INCORPORATED AND SHOULD NOT BE USED WITHOUT WRITTEN PERMISSION				
		SIZE		A3				