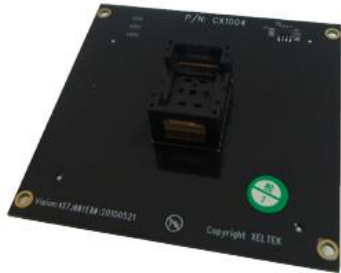


CX1004 Socket Adapter



Package: TSOP48

Socket Type: Opentop

Socket Size: 20*28

Pitch: 0.5

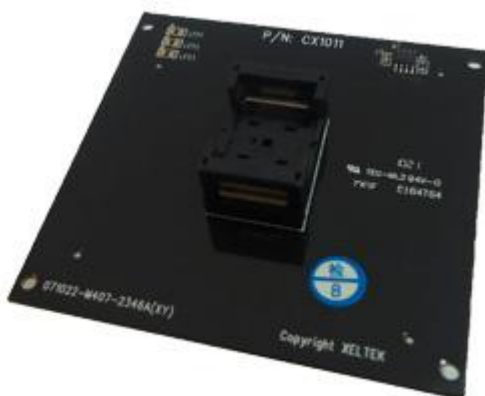
Body Size: 18.4

Size1: 19.2

Size2: 20

Programmer: SuperPro 5000/5004GP

CX1011 Socket Adapter



Package: TSOP56

Socket Type: Opentop

Socket Size: 20.7*30

Pitch: 0.5

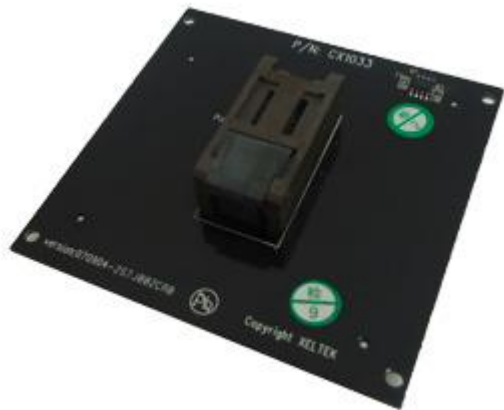
Body Size: 18.4

Size1: 19.2

Size2: 20

Programmer: SuperPro 5000/5004GP

CX1033 Socket Adapter



Package: SOIC28

Socket Type: Cover

Socket Size: 20*40

Pitch: 1.27

Body Size: 7.8

Size1: 9

Size2: 10.5

Programmer: SuperPro 5000/5004GP

CX2044 Socket Adapter



Package: PLCC44

Socket Type: Opentop

Socket Size: 28*28

Pitch: 1.27

Body Size: 17.5*17.5

Size1:

Size2: 18.3*18.3

Programmer: SuperPro 5000/5004GP

CX2084 Socket Adapter



Package: PLCC84

Socket Type: Opentop

Socket Size: 40*40

Pitch: 1.27

Body Size: 29.3*29.3

Size1:

Size2: 30.2*30.2

Programmer: SuperPro 5000/5004GP