

120mm sq.

San Ace 120

25mm thick (G type), 38mm thick (GV type)
38mm thick (G type), 38mm thick (SG type)



General Specifications With a pulse sensor

- Material Frame: Aluminum, Impeller:Plastics (Flammability: UL94V-1)
- Life Expectancy Varies for each model (L10:Survival rate:90% at 60°C ,
rated voltage, and continuously run in a free air state)
- Lead Wire ⊕red ⊖black or blue Sensor yellow
- Storage Temperature -30°C to +70°C (Non-condensing)

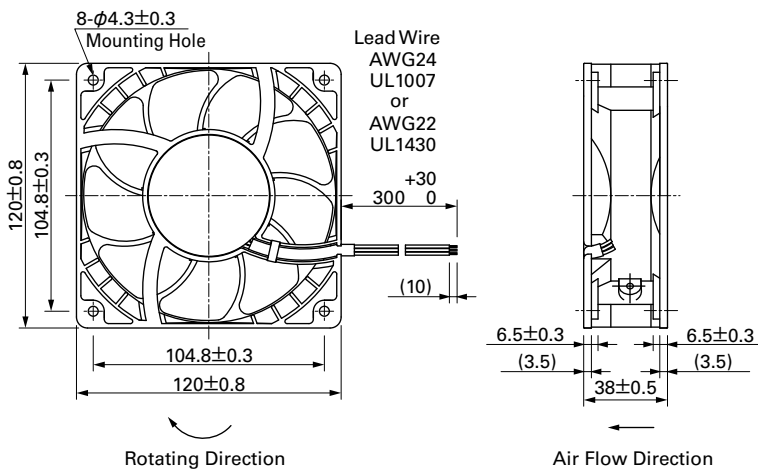
120×120×38mm (Mass : 400g)

SG type

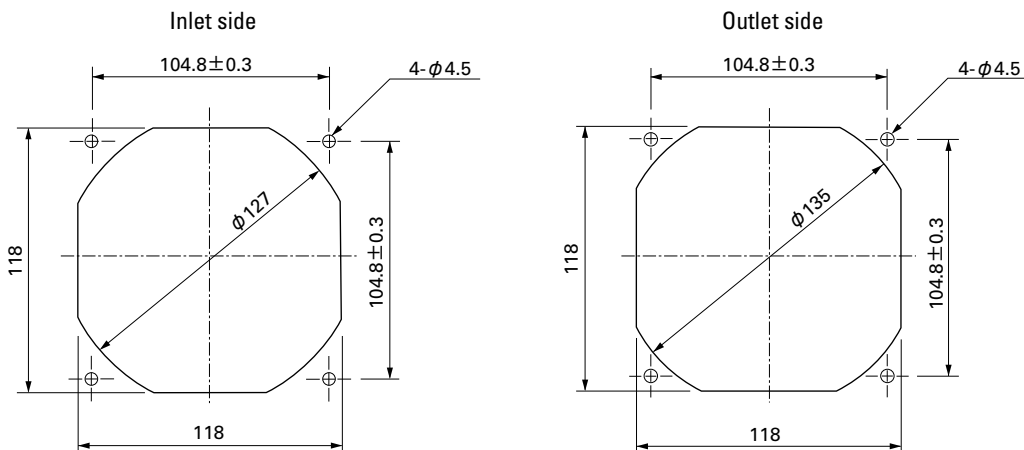
Specifications

| Model No. | Rated Voltage [V] | Operating Voltage Range [V] | Rated Current [A] | Rated Input [W] | Rated Speed [min ⁻¹] | Air Flow [m ³ /min] [CFM] | Static Pressure [Pa] [inchH ₂ O] | SPL [dB(A)] | Operating Temperature [°C] | Life Expectancy [h] |
|--------------------|-------------------|-----------------------------|-------------------|-----------------|----------------------------------|--------------------------------------|---|-------------|----------------------------|---------------------|
| 9SG1224H101 | 24 | 20.4 to 27.6 | 0.46 | 11.04 | 3,400 | 4.02 141.9 | 126 0.5 | 48 | - 10 to +70 | 40,000 |

Dimensions (Unit : mm)



Reference dimension of mounting holes and vent opening (Unit : mm)

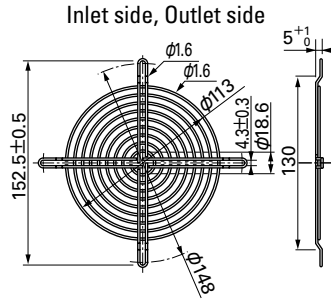
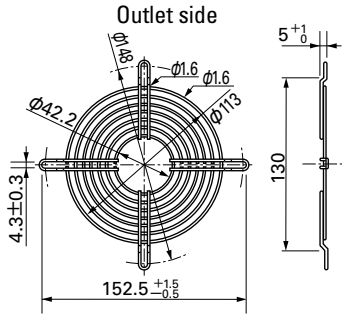


Options (Unit : mm)

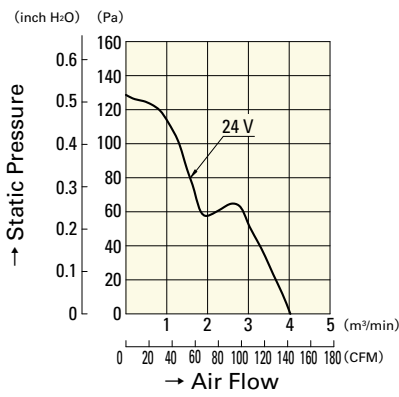
Finger guards

Model : 109-019C Surface treatment : Nickel-chrome plating (silver) Color
 : 109-019H : Cation electropainting (black)

Model : 109-019E Surface treatment : Nickel-chrome plating (silver) Color
 : 109-019K : Cation electropainting (black)



Air Flow - Static Pressure Characteristics



9SG1224H101