

Available from Midas Components LTD
Telephone Number: +44(0) 1493 602602
Website: www.midascomponents.co.uk
Email: sales@midascomponents.co.uk

Specification for BTHQ 42008VSS-SMN-LEDwhite

Version July 2003

DOCUMENT REVISION HISTORY 1:

DOCUMENT REVISION FROM TO	DATE	DESCRIPTION	CHANGED BY	CHECKE D BY
A	2003.07.15	First Release.	HELEN HE	LU MIN YUAN

CONTENTS

	<u>Page No.</u>
1. GENERAL DESCRIPTION	4
2. MECHANICAL SPECIFICATIONS	4
3. BACKLIGHT SPECIFICATION	6
4. INTERFACE SIGNALS	7
5. ABSOLUTE MAXIMUM RATINGS	8
5.1 ELECTRICAL MAXIMUM RATINGS (Ta=25°C)	8
5.2 ENVIRONMENTAL CONDITION	8
6. ELECTRICAL SPECIFICATIONS	9
6.1 TYPICAL ELECTRICAL CHARACTERISTICS	9
6.2 TIMING SPECIFICATIONS	10
6.3 TIMING DIAGRAM OF VDD AGAINST V0	12
6.4 CHARACTER GENERATOR ROM (KS0066U-10B)	13

**Specification
of
LCD Module Type
Model No.: BTHQ 42008VSS-08**

1. General Description

- 20 characters (5 x 8 dots) x 4 line STN Negative Blue Transmissive LCD Character Module.
- Viewing Angle: 6 O'clock direction.
- Driving duty: 1/16 Duty, 1/5 bias.
- 'SAMSUNG' KS0066UP-10BCC (Die) LCD Controller & Driver or equivalent.
- 'SAMSUNG' KS0065B-PCC (Die) LCD Segment Drivers or equivalent.
- White LED01 backlight.

2. Mechanical Specifications

The mechanical detail is shown in Fig. 1 and summarized in Table 1 below.

Table 1

Parameter	Specifications	Unit
Outline dimensions	146.0(W) x 62.5(H) x 13.0 MAX.(D)	mm
Viewing area	123.0(W) x 42.5(H)	mm
Active area	118.84(W) x 38.47(H)	mm
Display format	20 characters x 4 lines	-
Character size	4.84(W) x 9.22(H) (5 x 8 dots)	mm
Character spacing	1.16(W) x 0.53(H)	mm
Character pitch	6.00(W) x 9.75(H)	mm
Dot size	0.956(W) x 1.139(H)	mm
Dot spacing	0.015(W) x 0.015(H)	mm
Dot pitch	0.971(W) x 1.154(H)	mm
Weight:	Approx. 131.0	grams

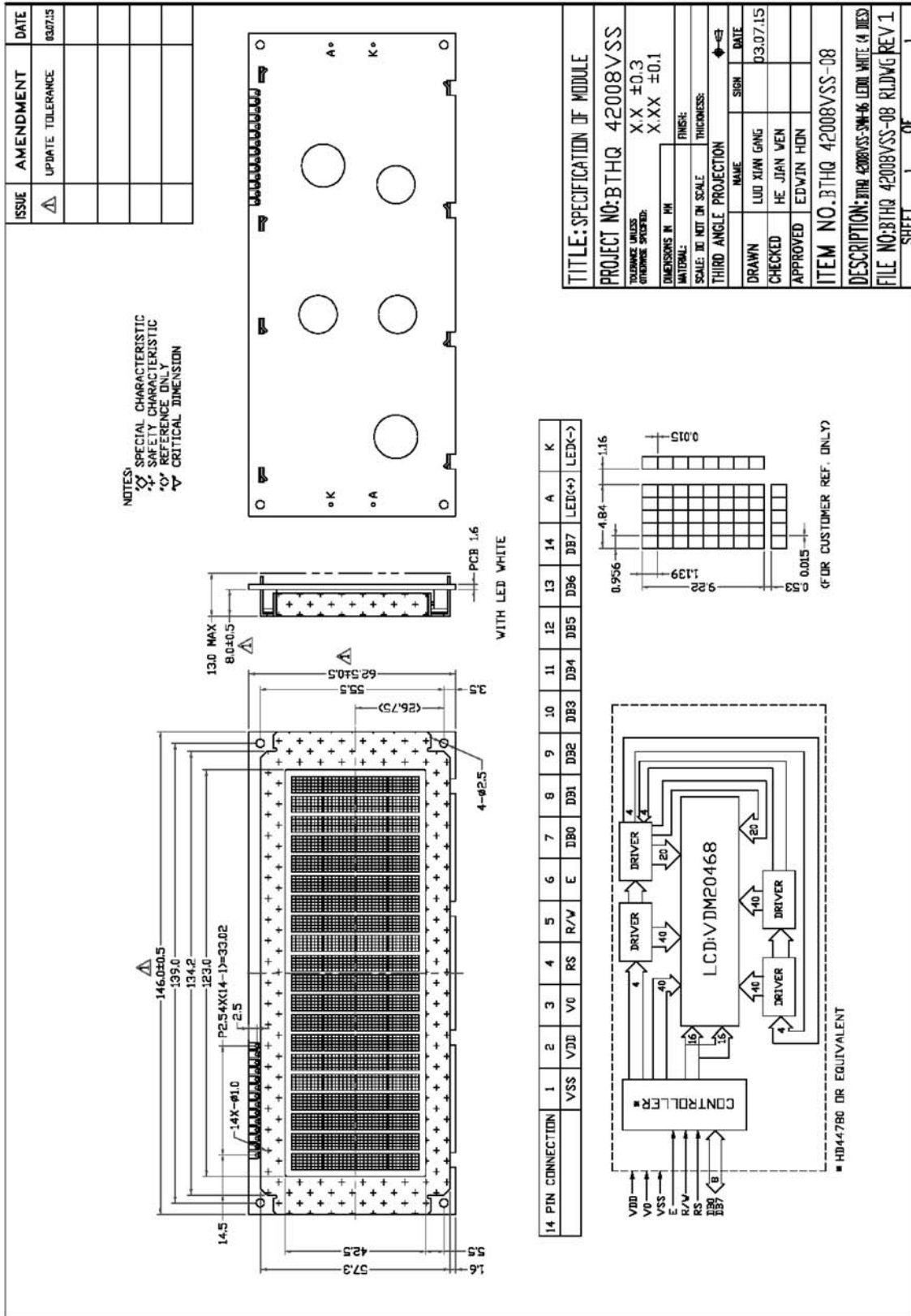


Figure 1: Module Specification

3. Backlight Specification

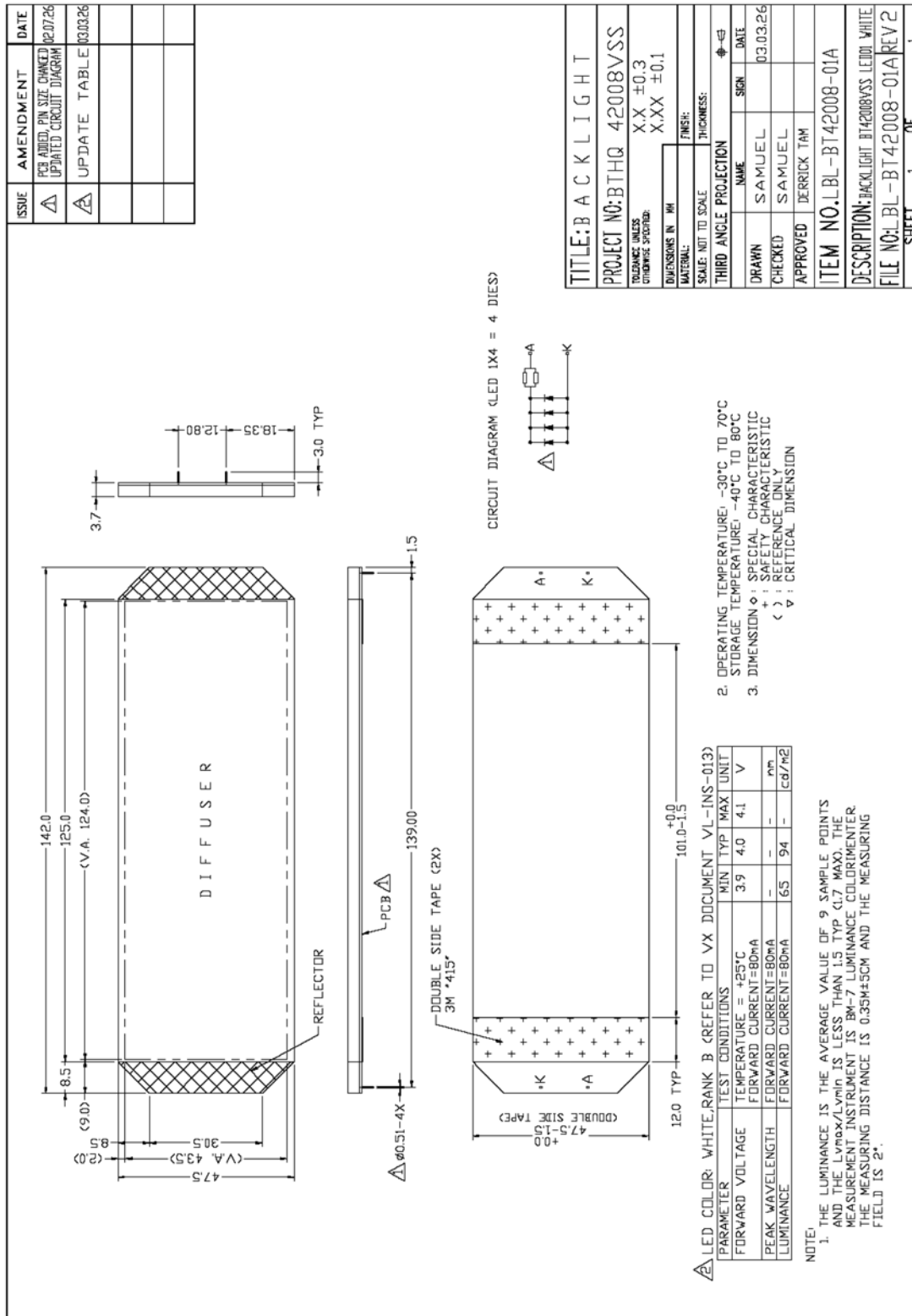


Figure 2: Backlight Specification

4. Interface signalsTable 2: Pin assignment

Pin No.	Symbol	Description
1	VSS	Ground (0V)
2	VDD	Power supply for logic (+5V)
3	V0	Power supply for LCD driver
4	RS	Register Select Input: “High” for Data register (for read and write), “Low” for Instruction register (for write), Busy flag, address counter (for read).
5	R/W	Read/Write signal: “High” for Read mode. “Low” for Write mode.
6	E	Enable. Start signal for data read /write.
7	DB0	Data input/output (LSB)
8	DB1	Data input/output
9	DB2	Data input/output
10	DB3	Data input/output
11	DB4	Data input/output
12	DB5	Data input/output
13	DB6	Data input/output
14	DB7	Data input/output (MSB)
A	LED(+)	Anode of LED Backlight
K	LED(-)	Cathode of LED Backlight

5. Absolute Maximum Ratings**5.1 Electrical Maximum Ratings (Ta = 25 °C)**Table 3

Parameter	Symbol	Min.	Max.	Unit
Power Supply voltage (Logic)	VDD - VSS	-0.3	+7.0	V
Power Supply voltage (LCD drive)	VLCD =VDD- V0	-0.3	+15.0	V
Input voltage	Vin	-0.3	VDD+0.3	V

Note:

The modules may be destroyed if they are used beyond the absolute maximum ratings.

All voltage values are referenced to VSS = 0V.

5.2 Environmental ConditionTable 4

Item	Operating Temperature (Topr)		Storage Temperature (Tstg)		Remark
	Min.	Max.	Min.	Max.	
Ambient Temperature	0°C	+50°C	-10°C	+60°C	Dry
Humidity	95% max. RH for Ta ≤ 40°C < 95% RH for Ta > 40°C				no condensation
Vibration (IEC 68-2-6) cells must be mounted on a suitable connector	Frequency: 10 ~ 55 Hz Amplitude: 0.75 mm Duration: 20 cycles in each direction.				3 directions
Shock (IEC 68-2-27) Half-sine pulse shape	Pulse duration : 11 ms Peak acceleration: 981 m/s ² = 100g Number of shocks : 3 shocks in 3 mutually perpendicular axes.				3 directions

6. Electrical Specifications

6.1 Typical Electrical Characteristics

At $T_a = 25\text{ }^\circ\text{C}$, $V_{DD} = 5V \pm 5\%$, $V_{SS} = 0V$.

Table 5

Parameter	Symbol	Conditions	Min.	Typ.	Max.	Unit
Supply voltage (Logic)	VDD-VSS		4.75	5.0	5.25	V
Supply voltage (LCD)	VLCD =VDD-V0	VDD = 5.0V, $T_a = 0\text{ }^\circ\text{C}$, Note1.	-	5.1	-	V
		VDD = 5.0V, $T_a = 25\text{ }^\circ\text{C}$, Note1.	4.5	4.7	4.9	V
		VDD = 5.0V, $T_a = 50\text{ }^\circ\text{C}$, Note1.	-	4.6	-	V
Input signal voltage for E,DB0-DB7,R/W,RS.	V_{IH}	“H” level	2.2	-	VDD	V
	V_{IL}	“L” level	-0.3	-	0.6	V
Supply Current (Logic & LCD)	IDD	VDD = 5V, Character mode	-	2.0	3.0	mA
Supply Current (LCD)	I0	VDD = 5V, Character mode, Note (1).	-	1.0	1.5	mA
Supply voltage of white LED01 backlight	VLED01	Forward current =80mA Number of LED dies =1x4=4	3.9	4.0	4.1	V

Note (1) : There is tolerance in optimum LCD driving voltage during production and it will be within the specified range.

6.2 Timing Specifications

At $T_a = 0\text{ }^{\circ}\text{C}$ to $+50\text{ }^{\circ}\text{C}$, $V_{DD} = +5\text{V}\pm 5\%$, $V_{SS} = 0\text{V}$.

Refer to Fig. 3, the write mode timing diagram.

Table 6

Parameter	Symbol	Min.	Max.	Unit
E Cycle Time	t_c	500	-	ns
E Rise/Fall Time	t_{R,t_F}	-	20	ns
E Pulse Width(high, low)	t_w	230	-	ns
R/W and RS Setup Time	t_{SU1}	40	-	ns
R/W and RS Hold Time	t_{H1}	10	-	ns
Data Set-up Time	t_{SU2}	80	-	ns
Data Hold Time	t_{H2}	10	-	ns

Refer to Fig. 4, the bus timing diagram for read mode.

Table 7

Parameter	Symbol	Min.	Max.	Unit
E Cycle Time	t_c	500	-	ns
E Rise/Fall Time	t_{R,t_F}	-	20	ns
E Pulse Width(high, low)	t_w	230	-	ns
R/W and RS Setup Time	t_{SU}	40	-	ns
R/W and RS Hold Time	t_H	10	-	ns
Data Output Delay Time	t_D	-	120	ns
Data Hold Time	t_{DH}	5	-	ns

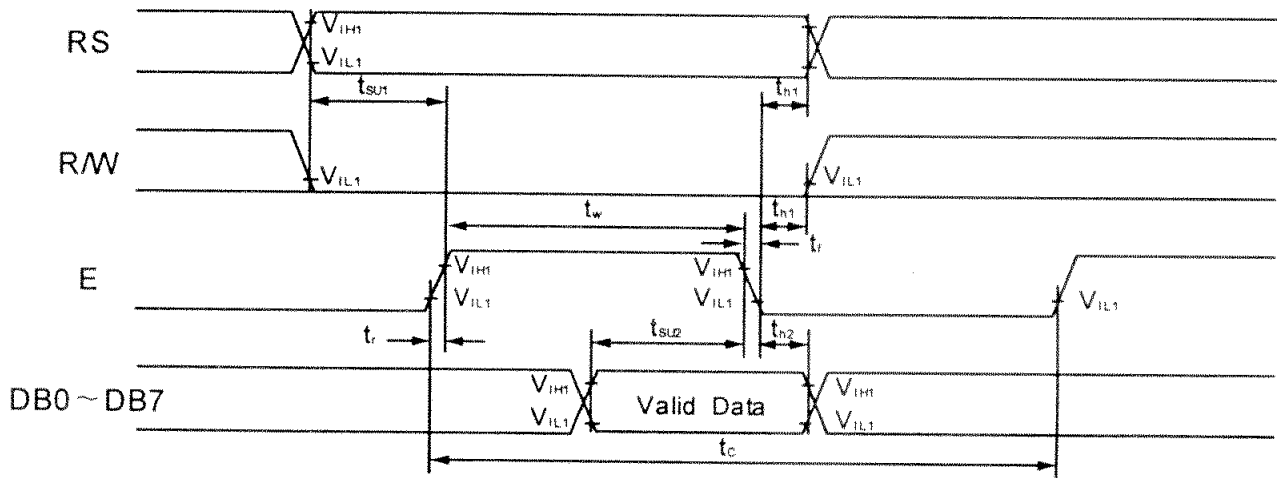


Figure 3: Write Mode Timing Diagram

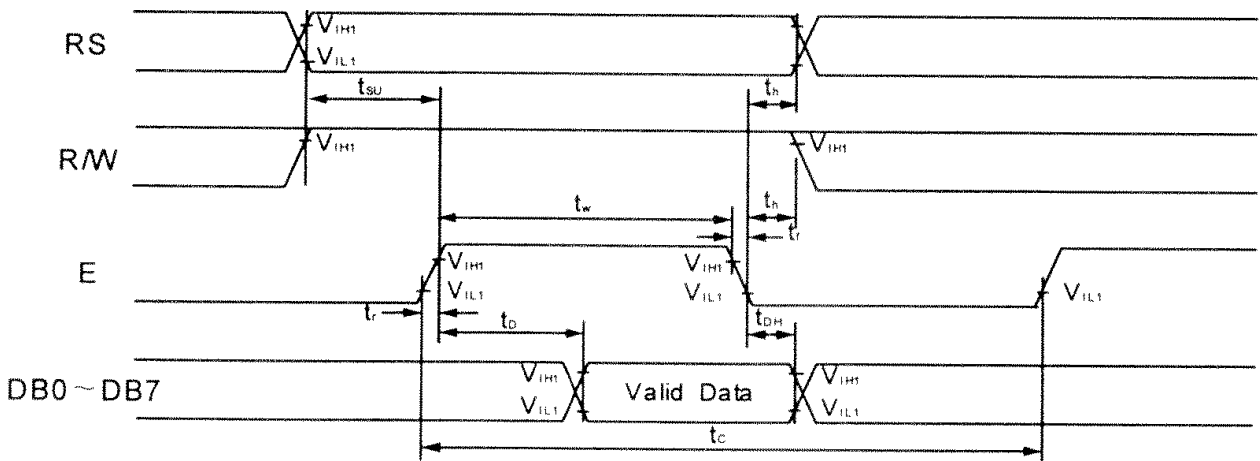


Figure 4: Read Mode Timing Diagram

6.3 Timing Diagram of VDD Against V0.

Power on sequence shall meet the requirement of Figure 5, the timing diagram of VDD against V0.

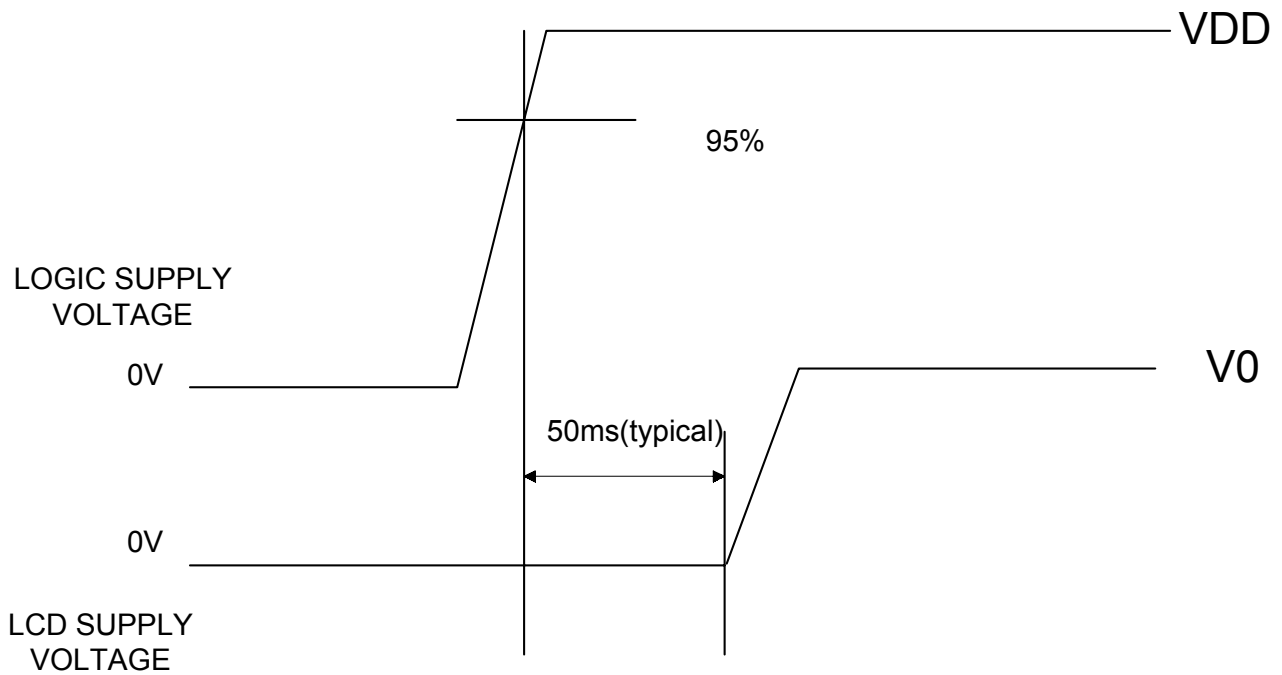


Figure 5: Timing Diagram of VDD Against V0.

6.4 Character Generator ROM (KS0066U-10B)

Upper 4bit Lower 4bit	LLLL	LLHL	LLHH	LHLL	LHLH	LHHL	LHHH	HLLL	HLLH	HLHL	HLHH	HHLL	HHLH	HHHL	HHHH
LLLL	CG RAM (1)														
LLLH	(2)														
LLHL	(3)														
LLHH	(4)														
LHLL	(5)														
LHLH	(6)														
LHHL	(7)														
LHHH	(8)														
HLLL	(1)														
HLLH	(2)														
HLHL	(3)														
HLHH	(4)														
HHLL	(5)														
HHLH	(6)														
HHHL	(7)														
HHHH	(8)														