

Products

SP60 series | Single-pole momentary switch 16A quick connection 6.3 black body under-button frame edge



sample image

PRODUCT CODE: SP6024C100000

Wiring diagrams



Terminal type



accessories

Body colour



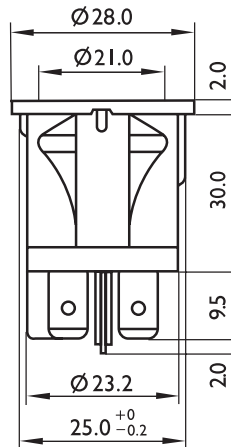
Rating

16 (6) A / 250 VAC
 10 (4) A / 400 VAC
 10 (4) A / 250 VAC - 5E4
 T120/55 °C

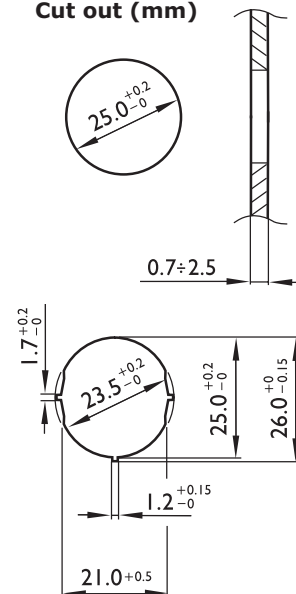
Approvals



Dimensions (mm)



Cut out (mm)



Termination

