

ServSwitch Jr. ServSwitch Jr. MP

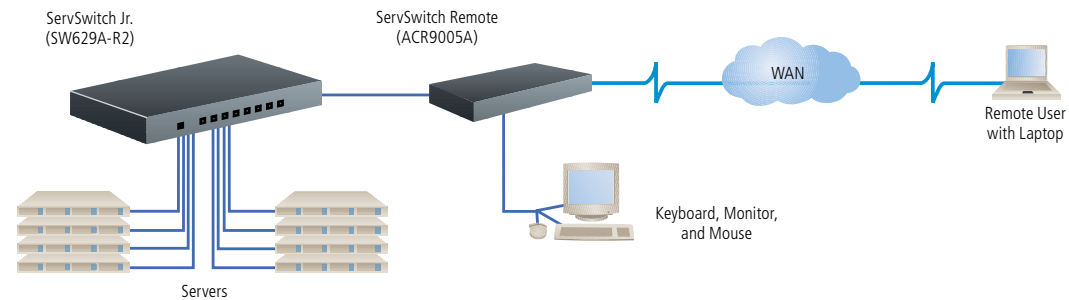
Manage a few IBM PS/2 or PC/AT compatible CPUs— plus one or two Mac CPUs—using a single keyboard, monitor, and mouse.



## FEATURES

- » ServSwitch Jr.—Access up to eight IBM PC/AT or PS/2 type CPUs with a single monitor, PS/2 or PC/AT keyboard, and PS/2 or serial mouse.
- » ServSwitch Jr. MP—Access one or two IBM type CPUs and one or two Mac CPUs with a single monitor, PS/2 keyboard, and PS/2 mouse.
- » Both Models—Use any of a variety of video types at resolutions up to 1600 x 1280.

## The layout of a typical ServSwitch Jr. system.



## OVERVIEW

If you'll only need to switch between up to eight PCs or servers for the foreseeable future, why spend a fortune on an electronic keyboard/video/mouse switch with a myriad of ports or fancy cascading features?

Our [ServSwitch Jr.™](#) is just right for small-scale applications such as workgroups, small offices, or home offices. Use one monitor, keyboard, and mouse to control IBM® PC compatible (and, on MP models, Apple® Macintosh® compatible) computer or server CPUs.

With the [ServSwitch Jr.](#) (non-MP version), access either two IBM type CPUs (with the SW621A-R3) or as many as eight (with the SW629A-R2). With the [ServSwitch Jr. MP](#), access one IBM type CPU and one Mac® type CPU (with the SW627A-R2) or one or two of each type (with the SW628A-R2).

Setting up is easy. Using their own cables, plug your VGA or XGA monitor, keyboard, and mouse directly into the [ServSwitch Jr.](#) Attach each of the computers to the switch using a special CPU adapter cable that has a single connector on the switch end and three connectors (for keyboard, mouse, and video I/O) on the computer end. These CPU adapter cables help keep cabling simple; also, the coax versions can be run longer distances than normal keyboard, mouse, or video cable.

As long as you use the right type of CPU adapter cable, it doesn't matter what general type of keyboard and mouse any given IBM type computer uses. As for user-station equipment, use a regular or wheel-

type PS/2® mouse and PS/2 keyboard with the [ServSwitch Jr. MP](#). With the regular [ServSwitch Jr.](#), attach either a PS/2 or PC/AT® style keyboard and either a PS/2 mouse (regular or wheel type) or (if there are no PS/2 type CPUs attached) an RS-232 mouse. Except for RS-232 mouse input to PS/2 mouse output, the switch can perform all of the various conversions internally.

The switch also seamlessly handles VGA, SVGA, or XGA video at resolutions up to 1600 x 1280 pixels, although higher resolutions, refresh rates, or distances will require coaxial CPU adapter cables. On non-MP models, using coaxial cables will also give you the ability to display RS/6000® or SGI™ video. On MP models, to get Mac video in resolutions above 640 x 480 pixels, you'll need the Mac Adapter for ServSwitch (KV99MA).

To switch between CPUs, either press the port-selection buttons on the switch's front panel or send switching commands from the shared keyboard. (Other keyboard commands control port scanning and configuration functions. Configuration settings can be saved in nonvolatile memory, so they'll be preserved even if the switch loses power.)

The [ServSwitch Jr.](#) doesn't even have to be plugged in—it draws its power from the keyboard and mouse interfaces of the attached CPUs, while the [ServSwitch Jr. MP](#) has its own external power supply. And both are small enough to fit on a cramped desktop or even in one rack unit (rackmount kits are available).

## TECH SPECS

**Compliance** — FCC Part 15 Subpart B Class A, IC Class/classe A

**Distance (Maximum)** — Depending on the CPU, monitor, and video resolution,

Either  
20 ft. (6.1 m) of original Serv cable from ServSwitch Jr. to any CPU;

or  
50 ft. (15.2 m) of coaxial cable—possibly more, depending on CPUs— from any ServSwitch Jr. to any device attached to it

**Refresh Rate** — Up to 100 Hz

**Resolutions (Maximum)** —

With original Serv cabling:  
1024 x 768 noninterlaced,  
at up to 75 Hz;

With coaxial or special cabling:  
1600 x 1280 noninterlaced,  
at up to 100 Hz)

**Standards** —

With original Serv cabling:  
VGA (color, monochrome, or  
page white);

With original Serv cabling  
(minimal) or coaxial cabling  
(recommended):  
SVGA video;

With coaxial cabling: XGA (color  
or monochrome) video;

Non-MP models: RS/6000 or SGI  
video;

With Special Cabling: True  
monochrome video;

MP models: Apple Macintosh  
video

**User Controls** —

Keyboard commands;  
Front-mounted RESET and  
numbered port-selection  
pushbuttons

**Interfaces** — To user station:

All models: VGA/SVGA/XGA  
video; IBM PS/2 keyboard and  
mouse (including Microsoft®  
IntelliMouse®);

SW621A-R3: PC/AT® keyboard;  
IBM serial (TIA/EIA RS-232  
pinned as TIA-574) mouse;

To computer —  
All ports on regular models and  
PC ports on MP models:  
Proprietary composite of  
VGA/SVGA/XGA video;  
PS/2 or (with adapter);  
PC/AT keyboard;  
PS/2 or (with adapter) serial  
(TIA/EIA RS-232 pinned  
as TIA-574) mouse;

Mac ports on MP models:  
Proprietary composite of Apple  
Macintosh video, keyboard,  
and mouse

**Connectors** — All rear-mounted;

All models —  
VGA monitor port: HD15 F;  
PS/2 keyboard and PS/2 mouse  
ports: 6-pin mini-DIN F;  
Computer ports: DB25 F;

SW621A-R3:  
AT keyboard port: 5-pin DIN F;  
RS-232 mouse port: DB9 M;  
SW627A-R2, SW628A-R2,  
SW629A-R2: 3.5-mm barrel jack  
for external power

**Indicators** —

All models: Front-mounted  
switch power STATUS and  
numbered current-port LEDs;  
SW629A-R2: CPU power

**Temperature Tolerance** —  
32 to 131°F (0 to 55°C)

**Humidity Tolerance** —  
5 to 80% noncondensing

**Altitude (Maximum)** —  
10,000 ft. (3048 m)

**Enclosure** — Steel

**Power** —  
SW621A-R3: 5 VDC at up to  
1 amp from keyboard-power  
leads of attached CPUs;  
SW627A-R2, SW628A-R2:  
Either  
5 VDC at up to 1 amp from  
keyboard-power leads of  
attached CPUs

or  
From utility-power (mains)  
outlet through detachable  
input cord and included  
external power supply  
PS255 (not included):  
Input: 115–230 VAC  
at 50 or 60 Hz;  
Output: 5 VDC at up to  
1 amp;

SW629A-R2:  
Either  
5 VDC at up to 1 amp from  
keyboard-power leads of  
attached CPUs

or  
From utility-power (mains)  
outlet through detachable  
input cord and external  
power supply PS255 (not  
included):

Input: 115–230 VAC  
at 50 or 60 Hz;  
Output: 5 VDC at up to  
1 amp

**Size** —  
SW621A-R3, SW627A-R2,  
SW628A-R2:  
1.75"H (1U) x 8.8"W x 3.5"D  
(4.4 x 22.4 x 8.9 cm);  
SW629A-R2:  
1.75"H (1U) x 13.5"W x 4.9"D  
(4.4 x 34.3 x 12.5 cm)

**Weight** —  
SW621A-R3: Net: 1.5 lb. (0.7 kg);  
Shipping: 2 lb. (0.9 kg);  
SW627A-R2, SW628A-R2:  
Net: 3 lb. (1.4 kg);  
Shipping: 4 lb. (1.8 kg);  
SW629A-R2: Net: 2.9 lb. (1.3 kg);  
Shipping: 3.6 lb. (1.6 kg)



SW628A-R2: top: front view;  
bottom: rear view



SW629A-R2 top: front view;  
bottom: rear view

### What's included

- ◆ The main unit.
- ◆ A user's manual.
- ◆ An external power supply (SW627A-R2 and SW628A-R2 only).

### Additional Equipment You'll Need:

- ◆ An IBM—preferably PS/2—type keyboard and mouse. (If you use a PS/2 mouse, it can be a regular two- or three-button type or a "wheel" mouse such as the Microsoft IntelliMouse.
- ◆ A monitor compatible with all of the CPUs' video cards, capable of syncing to each CPU's video-output resolutions and frequencies.
- ◆ CPU Adapter Cables to connect your CPUs to the ServSwitch Jr. or ServSwitch Jr. MP.

Item	Code
ServSwitch Jr. (PC Only)	
2-Port	<b>SW621A-R3</b>
8-Port	<b>SW629A-R2</b>
ServSwitch Jr. MP	
2-Port (1 PC Port, 1 Mac Port)	<b>SW627A-R2</b>
4-Port (2 PC Ports, 2 Mac Ports)	<b>SW628A-R2</b>
<b>For optimum performance and a 20% savings, order...</b>	
For PS/2:	
Standard	
5-ft. (1.5-m)	<b>EHN151-0005</b>
10-ft. (3-m)	<b>EHN151-0010</b>
20-ft. (6.1-m)	<b>EHN151-0020</b>
Coax, 20-ft. (6.1-m)	<b>EHN382-0020</b>
For AT:	
Standard, 5-ft. (1.5-m)	<b>EHN048-0005</b>
Coax. 50-ft. (15.2-m)	<b>EHN382-0050</b>
For Mac: Standard, 10-ft. (3-m)	<b>EHN215-0010</b>
<b>You may also need...</b>	
Optional Power Supply for 8-Port ServSwitch Jr.	<b>PS255</b>
<b>To upgrade SW621A-R2 to SW621A-R3 or SW622A-R2 to SW622A-R4...</b>	
Flash Chip	<b>KV99JR</b>
<b>To rackmount your ServSwitch Jr., order...</b>	
Rackmount Kits	
for 19" Rack	<b>RMK19S</b>
for 23" Rack	<b>RMK23S</b>

## Why Buy From Black Box? Exceptional Value. Exceptional Tech Support. Period.

### Recognize any of these situations?

- You wait more than 30 minutes to get through to a vendor's tech support.
- The so-called "tech" can't help you or gives you the wrong answer.
- You don't have a purchase order number and the tech refuses to help you.
- It's 9 p.m. and you need help, but your vendor's tech support line is closed.

According to a survey by *Data Communications* magazine, 90% of network managers surveyed say that getting the technical support they need is extremely important when choosing a vendor. But even though network managers pay anywhere from 10 to 20% of their overall purchase price for a basic service and support contract, the technical support and service they receive falls far short of their expectations—and certainly isn't worth what they paid.

At Black Box, we guarantee the best value and the best support. You can even consult our Technical Support Experts before you buy if you need help selecting just the right component for your application. Don't waste time and money—call Black Box today.