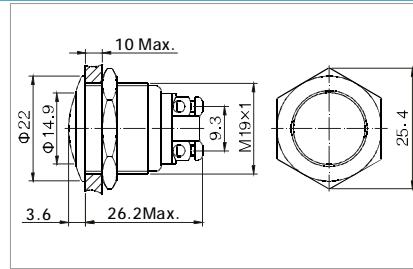


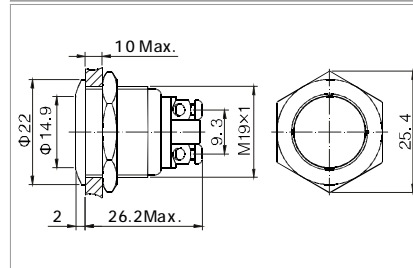
RJSGQ19



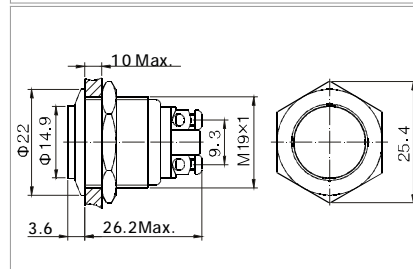
φ 19 mm Diameter
 Switch Rating: 2A/36VDC
 Contact Configuration: 1NO
 (1NC Made to Order)
 Operation Type: Momentary
 The Front Shape: Ball Head
 The Surface Material: BS/SS/B/BLK
 IP Degree: IP65



φ 19 mm Diameter
 Switch Rating: 2A/36VDC
 Contact Configuration: 1NO
 (1NC Made to Order)
 Operation Type: Momentary
 The Front Shape: Flat Head
 The Surface Material: BS/SS/B/BLK
 IP Degree: IP65


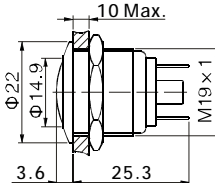
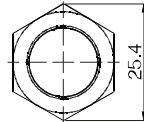
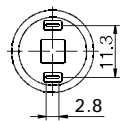

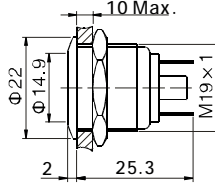
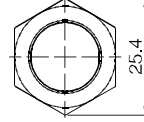
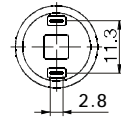

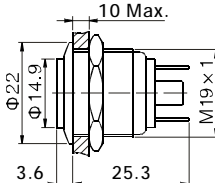
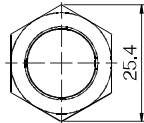
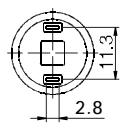


φ 19 mm Diameter
 Switch Rating: 2A/36VDC
 Contact Configuration: 1NO
 (1NC Made to Order)
 Operation Type: Momentary
 The Front Shape: High Head
 The Surface Material: BS/SS/B/BLK
 IP Degree: IP65



Specification	RJSGQ19B-X	RJSGQ19F-X	RJSGQ19H-X
The Front Shape	Ball Head	Flat Head	High Head
Terminal Type	Screw Terminals	Screw Terminals	Screw Terminals
Switching	X	X	X
Max. Switch Rating	2A/36VDC	2A/36VDC	2A/36VDC
Contact Resistance	≤50mΩ	≤50mΩ	≤50mΩ
Insulation Resistance	≥1000MΩ	≥1000MΩ	≥1000MΩ
Dielectric Intensity	2000VAC	2000VAC	2000VAC
Operating Temp	-20°C ~ +55°C	-20°C ~ +55°C	-20°C ~ +55°C
Mechanical Life	1,000,000cycles	1,000,000cycles	1,000,000cycles
Electrical Life	200,000cycles	200,000cycles	200,000cycles
Panel Thickness	1~10mm	1~10mm	1~10mm
Torque	5~14Nm	5~14Nm	5~14Nm
Operation Pressure	About 4N	About 4N	About 4N
Operation Distance	About 1.8mm	About 1.8mm	About 1.8mm
IP Degree	IP65 IK09	IP65 IK09	IP65 IK09
Material	Contact	Silver Alloy BS/	Silver Alloy
	Button	SS/B/BLK BS/	BS/SS/B/BLK
	Body	SS/B/BLK	BS/SS/B/BLK
	Base	PBT	PBT
ROHS	Made to order	Made to order	Made to order

RJSGQ19U

	<p>Φ Switch Rating: 2A/36VDC Contact Configuration: 1NO (1NC Made to Order) Operation Type: Momentary The Front Shape: Ball Head The Surface Material: BS/SS/B/BLK IP Degree: IP65</p>		 <p>Top View</p>	 <p>Terminal Arrangement</p>
	<p>Φ Switch Rating: 2A/36VDC Contact Configuration: 1NO (1NC Made to Order) Operation Type: Momentary The Front Shape: Flat Head The Surface Material: BS/SS/B/BLK IP Degree: IP65</p>		 <p>Top View</p>	 <p>Terminal Arrangement</p>
	<p>Φ Switch Rating: 2A/36VDC Contact Configuration: 1NO (1NC Made to Order) Operation Type: Momentary The Front Shape: High Head The Surface Material: BS/SS/B/BLK IP Degree: IP65</p>		 <p>Top View</p>	 <p>Terminal Arrangement</p>

Specification	RJSGQ19VB-X	TJSGQ19VF-X	TJSGQ19VH-X
The Front Shape	Ball Head	Flat Head	High Head
Terminal Type	Pin Terminal (2.8x0.5mm)	Pin Terminal (2.8x0.5mm)	Pin Terminal (2.8x0.5mm)
Switching	X	X	X
Max. Switch Rating	2A/36VDC	2A/36VDC	2A/36VDC
Contact Resistance	≤50mΩ	≤50mΩ	≤50mΩ
Insulation Resistance	≥1000MΩ	≥1000MΩ	≥1000MΩ
Dielectric Intensity	2000VAC	2000VAC	2000VAC
Operating Temp	-20°C ~ +55°C	-20°C ~ +55°C	-20°C ~ +55°C
Mechanical Life	1,000,000cycles	1,000,000cycles	1,000,000cycles
Electrical Life	200,000cycles	200,000cycles	200,000cycles
Panel Thickness	1~100mm	1~10mm	1~10mm
Torque	5~14Nm	5~14Nm	5~14Nm
Operation Pressure	About 4N	About 4N	About 4N
Operation Distance	About 1.8mm	About 1.8mm	About 1.8mm
IP Degree	IP65 IK09	IP65 IK09	IP65 IK09
Material	Contact	Silver Alloy	Silver Alloy
	Button	BS/SS/B/BLK	BS/SS/B/BLK
	Body	BS/SS/B/BLK	BS/SS/B/BLK
	Base	PBT	PBT
	ROHS	Made to order	Made to order