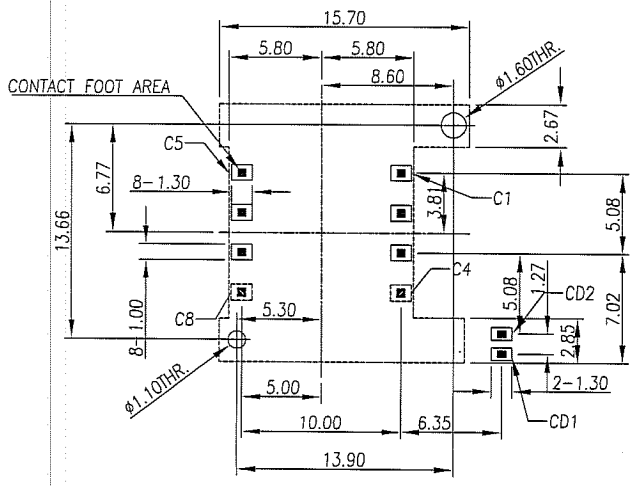
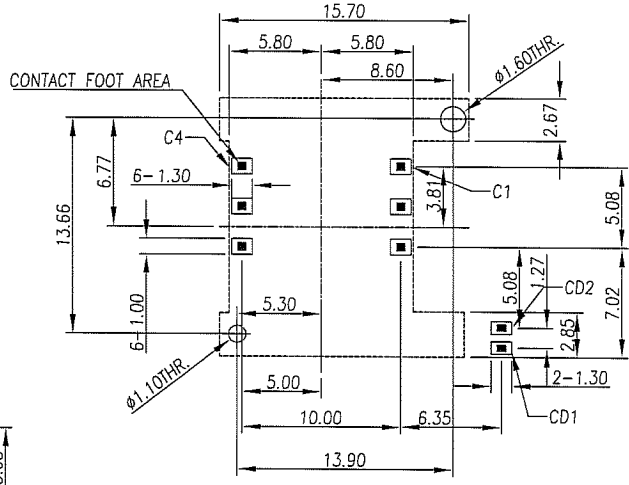
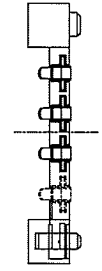
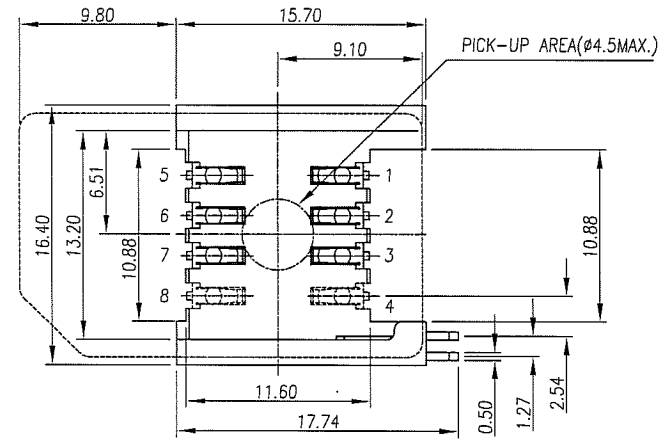
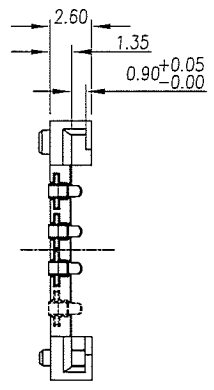


REV	MODIFICATION	DATE	DRAW
G	EN-09-0515	98.05.19	SAN
H	EN-09-0718	98.07.14	SAN
I	EN-09-0722	98.07.22	SAN

NOTES:

- General Characteristics
 Dimensions: 15.70x16.40x2.60H mm
 Weight: Approx. 0.45g±0.2g
 Contact principle: Friction technology
 Operating position: Shaft up/Down/Horizontal
 Mounting System: SMT
 Durability: 5000 cycles min.
- Mechanical characteristics:
 Insulation Material: Thermoplastic UL94V-0
- Electrical Characteristics
 Number of contacts: 6 pins (8 pins)
 Contact resistance: 50 megohms typical,
 100 megohms max.
 Insulation resistance: >1000 megohms /500 VDC
- Solderability
 Wave: Not applicable
 Vapor phase: 215°C, 30 sec. MAX.
 IR reflow: 260°C, 10 sec. MAX.
 Manual soldering: 360°C, 3 sec. MAX.
- Environmental Characteristics
 Operating temperature: -40°C~+85°C
 Operating humidity: 10%~95%RH
 Storage temperature: -40°C~+85°C
 Storage humidity: 10%~95%RH
 Thermal shock: -40°C~+85°C, 8 cycles
 Damp Heat: 40°C, 90%RH, 10 days
 Salt-mist: 35°C, 5%, NaCl, 24H



PIN	NAME
C1	Vcc
C2	RST
C3	CLK
C4	
C5	GND
C6	Vpp
C7	I/O
C8	
CD1	CD1
CD2	CD2

ORDER INFORMATION
 SIMMP-00 X XX B000-G
 6:6 pins PLATING COMPLY TO RoHS
 8:8 pins 01:GOLD FLASH
 15:15u" GOLD PLATING

DIMENSION IN mm [Inch]		PROD. SPEC.
TOLERANCE UNLESS OTHERWISE SPECIFIED		PKG. SPEC.
.X±	X.'±	APPROVE <i>Gomy</i>
.XX±	.X'±	CHECK <i>Tony</i>
.XXX±	.XX'±	DRAW <i>Sam</i>

KINGFONT PRECISION INDUSTRIAL CO., LTD.	
TITLE SIM CRAD CONNECTOR	CUSTOMER DRAWING
FILE NO.	DWG NO. SIMMP-00XXXB000-G
SIZE A4	PROJ. SHEET 1 / 1
	SCALE 2.5:1 REV I

F
F
E
D
C
B
A

F
E
D
C
B
A