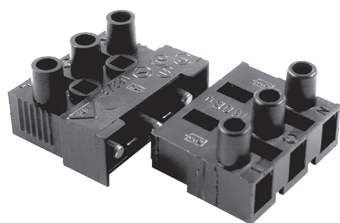


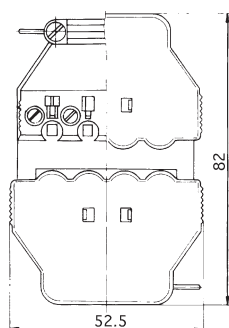
Plug & socket terminal blocks

SERIES 160BU/163ST

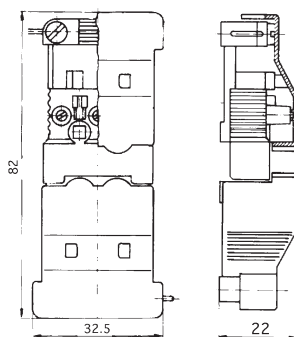
10A plugs & sockets with covers & base plates



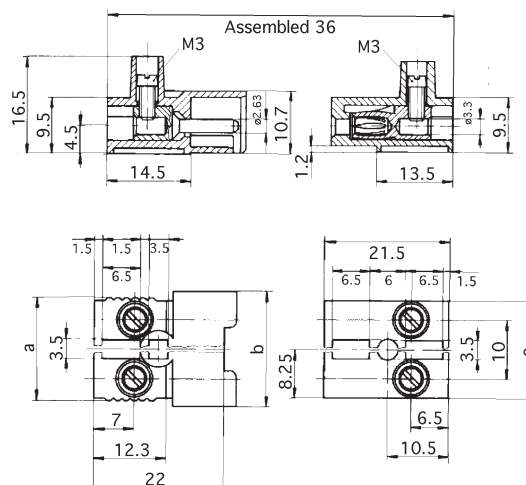
163ZEL05



163ZEL03



163ST/BU



FEATURES

SERIES 160/163 plug and socket connectors are available in 2, 3 and 5 pole lengths. The shrouding of the plug connectors prevent the two parts being incorrectly assembled. The 3 and 5 pole plug sections (163ST) have a leading earth pin which is 2mm longer, situated in the centre pole. The socket section (160BU) has a shroud to ensure that the plugs are totally enclosed before the earth connection is made.

Covers and base plates, **163ZEL/ABK** are available in 3 and 5 pole versions only. The cover (163ABK) can be used by snapping onto the plug or socket or both. The base plate (163ZEL) is supplied complete with an integral cord grip and screws which are supplied loose.

Approvals					
Nominal Cross-Section mm ²		2.5	14 AWG	2.5	2.5 16A
Voltage Rating V		400	600	380	380

TECHNICAL DETAILS

Mouldings:	nylon 6.6 (PA6/6), UL94 V2
Inserts:	brass, tinned
Screws:	M3 steel, zinc plated, chromed
Screw tightening torque:	max: 0.5 Nm
Temp. limits:	max short term: 160° C continuous: 100° C
Current rating:	to EN 61 984: 16A / 250v at 70° C
Voltage rating:	see approvals
Conductor size:	without wire protectors: 4mm ² with wire protectors: 2.5mm ²
Wire stripping length:	6.5mm - 7mm
Protection class:	IP 20 IP 40 when connected

