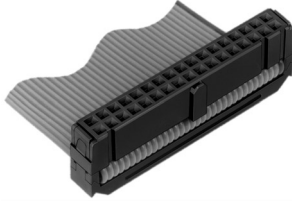


AMP-LATCH Sockets, Centre & Military Polarised .100 x .100 [2.54 x 2.54] Centres

Socket Connector



Contacts mate with .025 [0.64] sq. or round pins with .245 [6.22] max. and .175 [4.45] min. lengths.

Material and Finish:

Housing, Cover & Strain Relief—94V-0 rated thermoplastic, black

Contacts—Phosphor bronze, duplex plated

Electrical Characteristics

Contact Current Rating — 1 ampere (continuous)

Operating Temperature — -55°C to +105°C

Dielectric Withstanding Voltage: Sockets — 1000 Volts, RMS

Ejection Style Pin Headers (all) — 1000 Volts, RMS

Application Tooling:

R-CAM 4 Cable Assembly Machine

R-CAM 3A Ribbon Cable Assembly Machine

R-CAM 2A Ribbon Cable Assembly Machine

Manual Arbor Tool —

Part Number 91085-2

Pneumatic Auto-Cycle Tool —

Part Number 91112-3 —

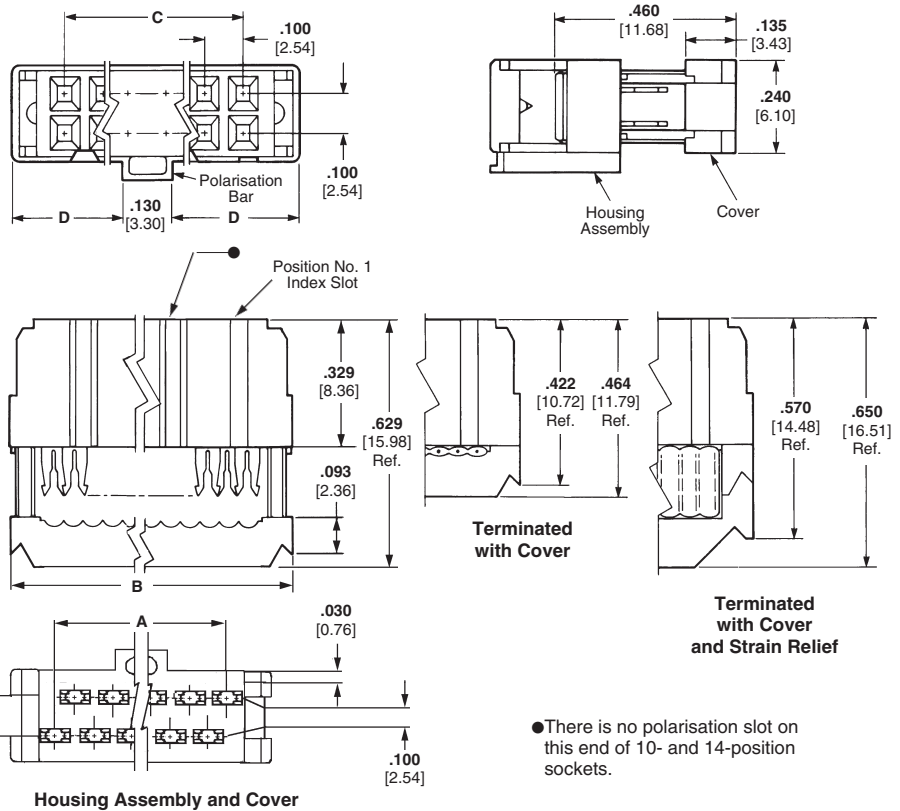
Technical Documents:

Product Specifications

108-40000 Novo and Novo Stackable Sockets; 108-40004 Ribbon Cable, PVC Insulated

Application Specification

114-40005 Ribbon Cable Connectors



No. of Positions	Dimensions				Contact Plating	Strain Relief	Socket without Strain Relief
	A	B	C	D			
10	.450	.680	.400	.275	Duplex ¹	499252-5	746285-1
	11.43	17.27	10.16	6.99	Duplex ²	499252-5	746288-1
14	.650	.880	.600	.375	Duplex ¹	499252-9	746285-2
	16.51	22.35	15.24	9.53	Duplex ²	499252-9	746288-2
16	.750	.980	.700	.425	Duplex ¹	499252-8	746285-3
	19.05	24.89	17.78	10.80	Duplex ²	499252-8	746288-3
20	.950	1.180	.900	.525	Duplex ¹	499252-2	746285-4
	24.13	29.97	22.86	13.34	Duplex ²	499252-2	746288-4
26	1.250	1.480	1.200	.675	Duplex ¹	499252-3	746285-6
	31.75	37.59	30.48	17.15	Duplex ²	499252-3	746288-6
34	1.650	1.880	1.600	.875	Duplex ¹	499252-6	746285-8
	41.91	47.75	40.64	22.23	Duplex ²	499252-6	746288-8
40	1.950	2.180	1.900	1.025	Duplex ¹	499252-1	746285-9
	49.53	55.37	48.26	26.04	Duplex ²	499252-1	746288-9
50	2.450	2.680	2.400	1.275	Duplex ¹	499252-4	1-746285-0
	62.23	68.07	60.96	32.39	Duplex ²	499252-4	1-746288-0
60	2.950	3.180	2.900	1.525	Duplex ¹	499252-7	1-746285-1
	74.93	80.77	73.66	38.74	Duplex ²	499252-7	1-746288-1
64	3.150	3.380	3.100	1.625	Duplex ¹	1-499252-3	1-746285-2
	80.01	85.85	78.74	41.28	Duplex ²	1-499252-3	1-746288-2

¹.000015 [0.00038] gold on post/pin mating end, .000100-.000200 [0.00254-0.00508] bright tin-lead on termination end, with entire contact underplated .000050 [0.00127] nickel.

².000030 [0.00076] gold on post/pin mating end, .000100-.000200 [0.00254-0.00508] bright tin-lead on termination end, with entire contact underplated .000050 [0.00127] nickel.

Note: These sockets include a housing assembly and cover (preassembled). Strain reliefs may be purchased separately using the component part nos. listed above.