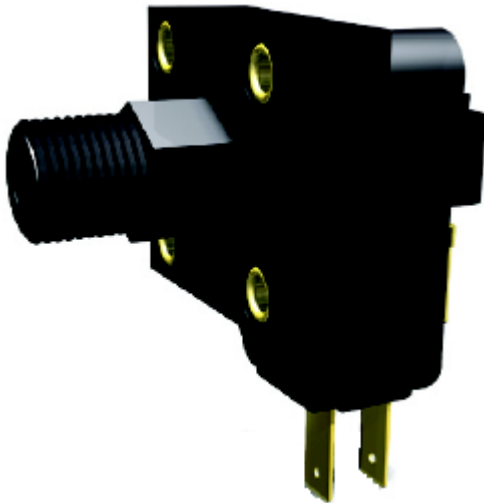


# Pressure Switches

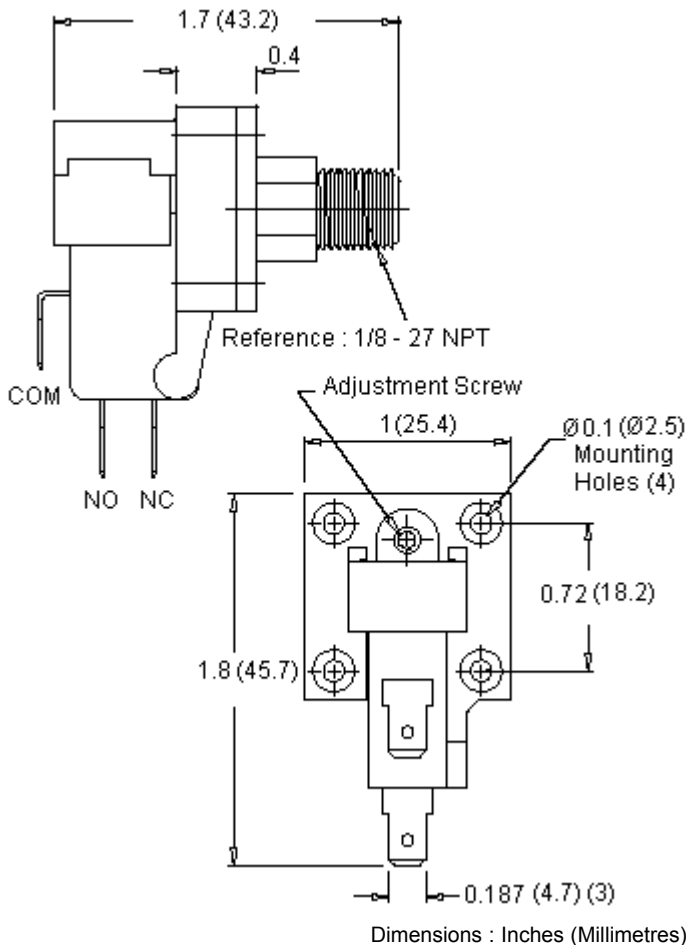


## High Current



### Features:

- Controllable hysteresis (deadband)
- Field adjustable pressure set point, from 3 inches H<sub>2</sub>O to 60 psi
- Snap action basic switch, up to 25 A\*, 125 / 250 V ac
- Many standard pressure ports and mounting options
- Custom design and engineering available
- Small size, light weight, low cost
- Dependable long life (10+ million cycles)
- \* Not available on all ranges



### Description

Design flex™ standard options - choose from our standard PSF103 options as shown or contact our vertically integrated in-house design and engineering team for special features and unique application needs

# Pressure Switches



## High Current

### Specifications:

#### Mechanical

|                       |  |
|-----------------------|--|
| Standard Tolerance    | : ±20% (tight tolerances available)                                      |
| Switch Type           | : SPDT (single pull / double throw) normally open or normally closed     |
| Switching Medium      | : Air, compatible fluids   |
| Mechanical Life       | : More than 10 million cycles  |
| Proof Pressure        | : Varies by option - see adjustable pressure set point options next page |
| Operating Temperature | : +40°F to +150°F (standard), -46°F to +205°F (contact us)               |

#### Physical

|                        |   |
|------------------------|---|
| Case Material          | : Polycarbonate (optional : Lexan 141, Supec®, Ultem®, Noryl®)  |
| Pressure Port Options  | : Many standard ports - see pressure port / cover options next page   |
| Diaphragm Material     | : Polyurethane (Teflon. optional with limited pressure ranges)  |
| Contact Points         | : Silver (gold available on special order)  |
| Electrical Connections | : Terminals - 0.187 × 0.02 inches tab-type for use with quick disconnects (ref. AMP #2-520182-2 or equivalent) 0.25 inches available - contact us |
| Mounting               | : #4 screws through mounting lugs; #2 screws through eyelets; mounting bracket available  |
| Weight                 | : Less than 20 g  |

#### Electrical

|                   |  |
|-------------------|--|
| Current Rating    | : Varies by option - see adjustable pressure set point options next page |
| Operating Voltage | : See adjustable pressure set point options                              |

### Specification Table

| Description                  | Inches H <sub>2</sub> O | mbar           | psi      | Proof Pressure (Polyurethane) | Proof Pressure (Teflon) | Electrical 125 / 250 V dc | Part Number     |
|------------------------------|-------------------------|----------------|----------|-------------------------------|-------------------------|---------------------------|-----------------|
| Pressure Switch, 4 - 15 psi  | 111 to 416              | 276 to 1,034   | 4 to 15  | 100 psi                       | 30 psi                  | 15 A                      | PSF103-9061-905 |
| Pressure Switch, 15 - 60 psi | 416 to 1,664            | 1,034 to 4,137 | 15 to 16 |                               |                         |                           | PSF103-9061-906 |

**Important Notice** : This data sheet and its contents (the "Information") belong to the members of the Premier Farnell group of companies (the "Group") or are licensed to it. No licence is granted for the use of it other than for information purposes in connection with the products to which it relates. No licence of any intellectual property rights is granted. The Information is subject to change without notice and replaces all data sheets previously supplied. The Information supplied is believed to be accurate but the Group assumes no responsibility for its accuracy or completeness, any error in or omission from it or for any use made of it. Users of this data sheet should check for themselves the Information and the suitability of the products for their purpose and not make any assumptions based on information included or omitted. Liability for loss or damage resulting from any reliance on the Information or use of it (including liability resulting from negligence or where the Group was aware of the possibility of such loss or damage arising) is excluded. This will not operate to limit or restrict the Group's liability for death or personal injury resulting from its negligence. Multicomp is the registered trademark of the Group. © Premier Farnell plc 2012.