



**MANUAL PHASE ANGLE  
TRIAC TRIGGER  
MODULE**

**MAT**  
X10224

**INTRODUCTION**

The MAT is a variable phase-angle triac trigger module. It is a compact, safe and tamperproof unit capable of driving all typical triacs on 230/110V ac regulator circuits. The unit has a manual control potentiometer and minimum output trimmer built in a industrial panel mounting enclosure.

**APPLICATIONS**

Suitable for most ac resistive or inductive loads via a triac, on single phase to neutral supplies, within voltage limits.

**FEATURES**

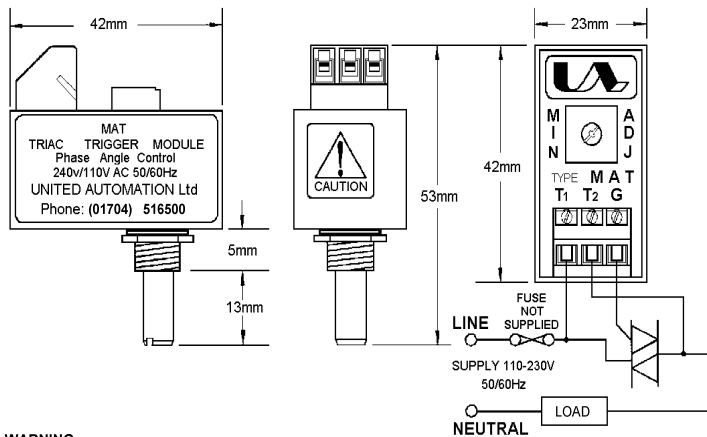
- Compact and easy to use
- Solid state reliability
- Single hole panel mounting
- Minimum offset
- Highly efficient



**RoHS Compliant**

**INSTALLATION**

DIMENSIONS AND CONNECTIONS



**WARNING**

LIVE TERMINALS: SWITCH OFF MAINS SUPPLY BEFORE COMMENCING ANY SERVICING WORK.

**SPECIFICATIONS**

ac system line voltage	110/230V ± 10%
Line frequency	50/60Hz
Minimum offset at 110V	0-50%
Minimum offset at 230V	0-50%
Conduction phase angle typical	0-160°
Controlled phase angle typical	30-160°
Isolation voltage	2500V rms
Maximum leakage current	6mA
Storage temperature	0-85°C
Operating temperature	0-65°C
Mounting hole diameter	10mm

**FUSING**

It is recommended to use semiconductor fast acting type fuses or circuit breakers (Semiconductor-MCB) for unit/device protection. On initial 'switch on' some loads may need an increased Factor of Safety (F of S) for unit and/or device protection. (See the SRA Datasheet for further information).

**CE MARKING**

This product family carries a "CE marking". These phase angle controllers need a suitable remote filter. For information see recommendation section and contact our sales desk. (See Declaration of Conformity).

**RECOMMENDATION**

Other documents available on request, which may be appropriate for your applications.

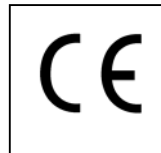
CODE	IDENTITY	DESCRIPTION
X10229	RFI	Filtering recommendation - addressing EMC directive.
X10213	ITA	Interaction, uses for phase angle and for burst fire control.
X10255	SRA	Safety requirements - addressing the Low Voltage Directive (LVD) including :-Thermal data/cooling ; "Live" parts warning & Earth requirements; Fusing recommendations.

P01.1 COS UAL Conditions of sale

**NOTE:** It is recommended that installation and maintenance of this equipment should be done with reference to the current edition of the I.E.T. (formally I.E.E.) regulations (BS7671) by suitably qualified/trained personnel. The regulations contain important requirements regarding installation and safety of electrical equipment. Specific installers should refer to local and national regulations.

**ORDER CODE:**

State part number: MAT.  
Optional extras include triac, heatsink assembly.



**UNITED AUTOMATION LIMITED**  
Southport Business Park  
Wight Moss Way  
Southport, PR8 4HQ  
ENGLAND  
Tel: 0044 (0) 1704 – 516500  
Fax: 0044 (0) 1704 – 516501  
enquiries@united-automation.com  
www.united-automation.com

Page No. 2 of 2 Issue 3 Date 31/07/12

