

# Adjustable pressure switches (manostats)



Yes

Yes

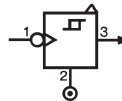
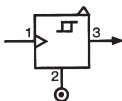
Counter balance leakage

## Part numbers (and adjustment ranges)

Adjustment range	81 505 140	81 505 150	81 505 160	81 502 140	81 502 150	81 502 160
0.7 to 8 psi (50 to 500 mb)						
2 to 35 psi (0.1 to 2.5 b)						
30 to 120 psi (2 to 8 b)						
Version	Positive output (N.C.)			Negative output (N.O.)		
Accuracy	0.7 to 8 psi (50 to 500 mb)	2 to 35 psi (0.1 to 2.5 b)	30 to 120 psi (2 to 8 b)	10 %	4 %	4 %
				10 %	4 %	4 %
				4 %	4 %	4 %

1

## Symbol

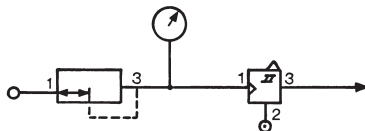


## Characteristics

Orifice diameter	inches (mm)	0.1 (2.5)	0.1 (2.5)
Flow at 90 psi (6 bars)	cfm (NL/min)	6 (170)	6 (170)
Hysteresis	0.7 to 8 psi (50 to 500 mb)	0.9 (60 mb)	0.9 (60 mb)
	2 to 35 psi (0.1 to 2.5 b)	1.5 (100 mb)	1.5 (100 mb)
	30 to 120 psi (2 to 8 b)	5 (320 mb)	5 (320 mb)
Connection - sub-base page 4/14-4/15			
Operating temperature	°F (°C)	+20 > +120 (-5 > +50)	+20 > +120 (-5 > +50)
Mechanical life	operations	3 Million	3 Million
Weight	grams	160	160
Relay color		Light gray	Yellow

## Connections

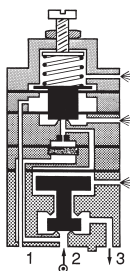
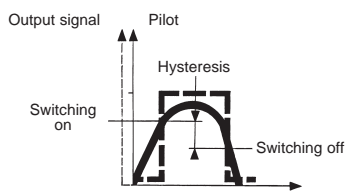
Example of pressure threshold adjustment (mini-regulator - manostat)



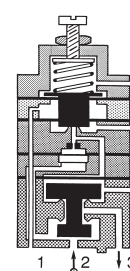
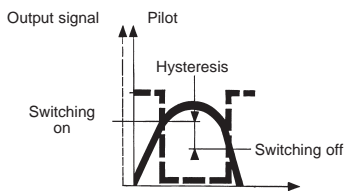
## Principle of operation

The manostats provide an on or off output signal when the input signal reaches a predetermined pressure threshold.

### Positive output (N.C.)

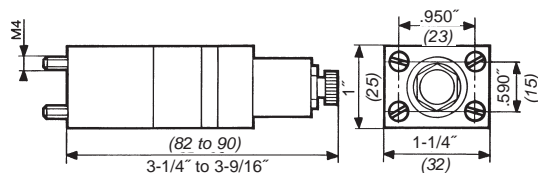


### Negative output (N.O.)



## Dimensions

81 502 140 - 81 502 150 - 81 502 160  
81 505 140 - 81 505 150 - 81 505 160



Use (metric) dimensions for critical data

Other information	To order, specify :
Pressure switches with electrical output on request.	<div style="display: flex; align-items: center;"> <div style="width: 20px; height: 10px; background-color: black; margin-right: 5px;"></div> <span>Standard products</span> </div> <div style="display: flex; align-items: center; margin-top: 5px;"> <div style="width: 20px; height: 10px; background-color: gray; margin-right: 5px;"></div> <span>Standard products, non stocked</span> </div>
	<div style="display: flex; align-items: center;"> <div style="width: 15px; height: 15px; background-color: black; margin-right: 5px; display: flex; align-items: center; justify-content: center; font-weight: bold; font-size: 10px;">1</div> <span>Part number</span> </div> <p>Example : Adjustable pressure switches (manostats) - 81 505 140</p>

Products and specifications subject to change without notice.  
Consult factory for application assistance.