

Ferrule Kit

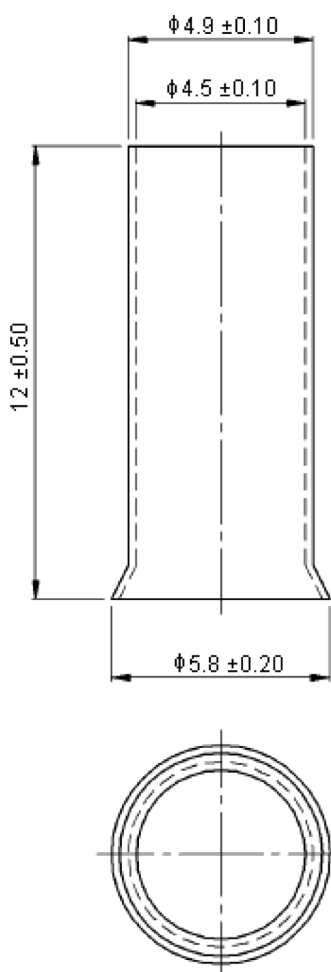
Uninsulated, 4mm to 16mm



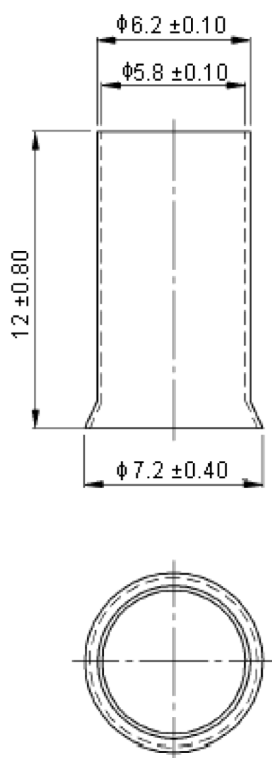
Specifications:

Surface Treatment	: Tin plated
Connector Kit Type	: Terminals & Splices
Kit Contents	: Uninsulated 4mm to 16mm Ferrules

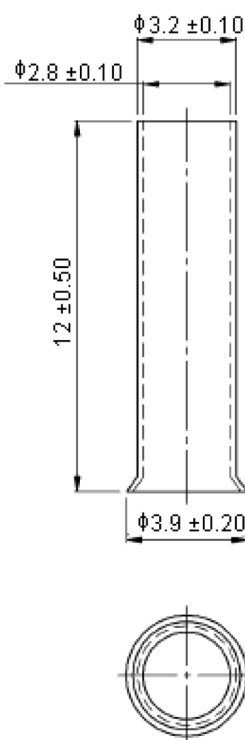
EN10-12



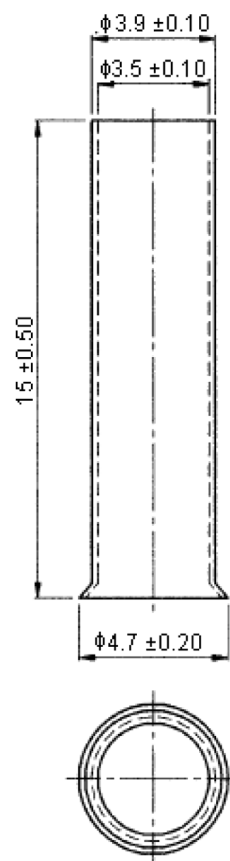
EN16-12



EN4012



EN6015



Dimensions : Millimetres



Ferrule Kit

Uninsulated, 4mm to 16mm



Item	Max. Electric Current		Wire Range
	AWG	A	
EN10-12	8	70	8AWG (10mm ²)
EN16-12	6	95	6AWG (16mm ²)
EN4012	12	35	12AWG (4mm ²)
EN6015	10	50	10AWG (6mm ²)

Part Number Table

Description	Part Number
Ferrule Kit, Uninsulated, 4mm - 16mm	XRBOX4-EN-EA481

Important Notice : This data sheet and its contents (the "Information") belong to the members of the Premier Farnell group of companies (the "Group") or are licensed to it. No licence is granted for the use of it other than for information purposes in connection with the products to which it relates. No licence of any intellectual property rights is granted. The Information is subject to change without notice and replaces all data sheets previously supplied. The Information supplied is believed to be accurate but the Group assumes no responsibility for its accuracy or completeness, any error in or omission from it or for any use made of it. Users of this data sheet should check for themselves the Information and the suitability of the products for their purpose and not make any assumptions based on information included or omitted. Liability for loss or damage resulting from any reliance on the Information or use of it (including liability resulting from negligence or where the Group was aware of the possibility of such loss or damage arising) is excluded. This will not operate to limit or restrict the Group's liability for death or personal injury resulting from its negligence. Multicomp is the registered trademark of the Group. © Premier Farnell plc 2012.

