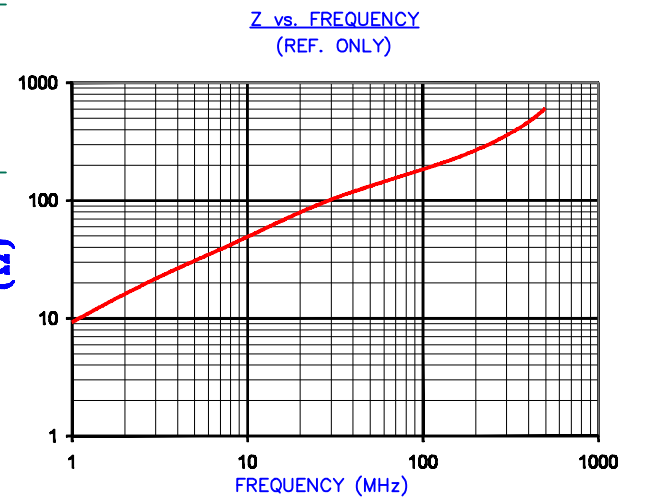
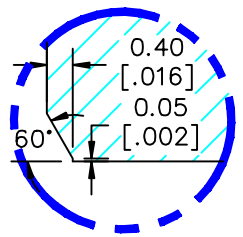


IMPEDANCE (Z)			
Frequency	25 MHz	100 MHz	300 MHz
Nominal (REF)	93 Ω	187 Ω	356 Ω
Minimum	- Ω	150 Ω	- Ω



AGILENT E4991A Impedance/Material Analyzer  
HP 16992A-Test Fixture TEST REF. 2988



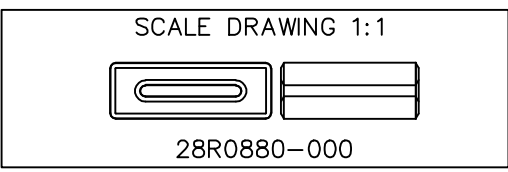
DETAIL "A"  
CHAMFER  
SCALE=9:1

**UNCONTROLLED DOCUMENT**

FERRITE CORE DIMENSIONS (SPEC): mm [in]

A	22.35 [.880]	+ 0.51 [.020]
B	14.00 [.551]	+ 0.25 [.010]
C	19.05 [.750]	+ 0.51 [.020]
D	7.75 [.305]	+ 0.30 [.012]
E	1.50 [.059]	+ 0.25 [.010]

WEIGHT/1000 14.25 kgs [31.42Lbs]



DIMENSIONS ARE IN mm[INCHES].				This print is the property of Laird Tech. and is loaned in confidence subject to return upon request and with the understanding that no copies shall be made without the written consent of Laird Tech. All rights to design or invention are reserved.			
REV	DESCRIPTION	DATE	INT				
P	CHANGED DETAIL A AND UPDATE TEMPLATE	03/02/12	Jcai	PROJECT/PART NUMBER: <b>28R0880-000</b> REV: <b>P</b> PART TYPE: <b>FERRITE RIBBON CORE</b> DRAWN BY: <b>BAC</b> DATE: 04/15/92 SCALE: 3 : 1 MATERIAL: <b>Ferrite</b> CAD # 28R0880-000-P TOOL # R0880			
N	UPDATE Z SPECS & COMPANY LOGO	07/27/07	JRK				
M	UPDATE Z SPECS ADJUST DIM C & D TOL PER ENGR & ADD TEST REF. #	11/16/04	TMB				
	UPDATE PRINT FORMAT CHANGE CURVE						
L	FORMAT ADD IMPEDANCE (Z) VALUES TO UPPER RIGHT CORNER OF PRINT	03/06/03	TMB				
K	UPDATE TO NEW CNZ FORMAT, ADD Z CURVE	06/19/02	JRK				
J	UPDATE Z SPECS	11/12/01	JRK				
H	UPDATE PRINT FOR ELECTRONIC DATABASE	11/09/00	JAJ				
REV	DESCRIPTION	DATE	INT				