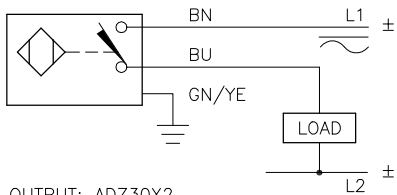


WIRING DIAGRAM

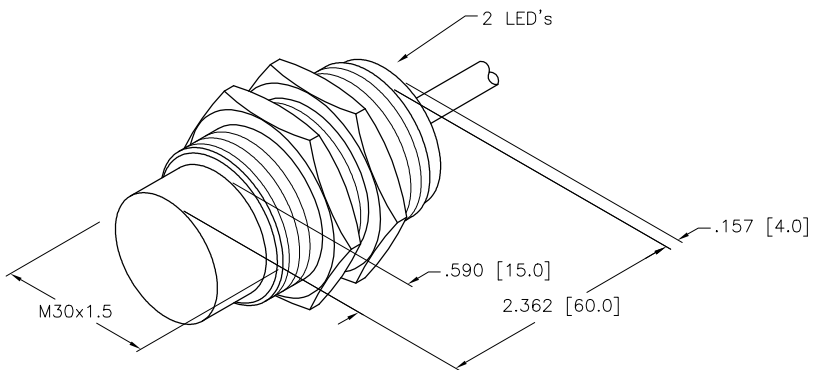


OUTPUT: ADZ30X2

SHORT-CIRCUIT AND OVERLOAD PROTECTED

SPECIFICATIONS

OPERATING VOLTAGE	20-250 VAC / 10-300 VDC
LINE FREQUENCY	40-60 Hz
HYSTERESIS (DIFFERENTIAL TRAVEL)	3-15% (5% TYPICAL)
VOLTAGE DROP ACROSS CONDUCTING SENSOR	≤ 6.0 V at FULL RATED CURRENT
OUTPUT FUNCTION	NORMALLY OPEN 2-WIRE AC/DC
SHORT-CIRCUIT PROTECTED	YES
TRIGGER CURRENT FOR OVERLOAD PROTECTION	≥ 440 mA AC/≥ 330 mA (DC)
CONTINUOUS LOAD CURRENT	≤ 400 mA AC/≤ 300 mA DC
LEAKAGE (OFF-STATE) CURRENT	≤ 1.7 mA
MINIMUM LOAD CURRENT	≥ 3.0 mA
INRUSH CURRENT	≤ 4.0 A (≤ 20 ms, 10% DUTY CYCLE)
TIME DELAY BEFORE AVAILABILITY	≤ 15 ms
POWER-ON EFFECT	PER IEC 947-5-2
PROTECTION AGAINST TRANSIENTS	PER EN 60947-5-2
OPERATING TEMPERATURE	-25°C to +70°C (-13°F to +158°F)
ENCLOSURE	MEETS NEMA 1, 3, 4, 6, 13 AND IEC IP67
SHOCK	30 g, 11 ms
VIBRATION	55 Hz, 1 mm AMPLITUDE (IN ALL 3 PLANES)
LED FUNCTION	GREEN = POWER ON FLASHING GREEN = SHORT-CIRCUIT WARNING RED = OUTPUT ENERGIZED
SENSING RANGE	20 mm = .787" (NOMINAL)
SWITCHING FREQUENCY	60 Hz
REPEATABILITY	≤ 2% OF RATED OPERATING DISTANCE
EMBEDDABLE (SHIELDED)	NO
LOCKNUT M30x1.5	36 mm AF, 41.5 mm AC, 5 mm THK



SOURCE DRAWING - FOR REFERENCE ONLY

NOTE:

1. MATERIALS:

- BARREL - CHROME PLATED BRASS
- LOCKNUTS - CHROME PLATED BRASS
- SENSING FACE - PA12-G30 PLASTIC
- END CAP - TPE-O ELASTOMER

2. ALL DIMENSIONAL TOLERANCES %%1.0mm.

RELATED DOCUMENTS 1. 2. 3. 4.	3RD ANGLE PROJECTION 	THIS DOCUMENT IS PROPERTY OF TURCK INC. USE OF THIS DOCUMENT WITHOUT WRITTEN PERMISSION IS PROHIBITED.		 High Technology Sensors and Automation Controls 3000 CAMPUS DRIVE MINNEAPOLIS, MN 55441 1-800-544-7769 (763) 553-7300 (763) 553-0708 fax turck.com	
	MATERIAL SEE NOTE	TOLERANCES UNLESS OTHERWISE SPECIFIED 0.0394in [1.00mm]	DRFT IK	DATE 03/16/01	DESCRIPTION Ni20-G30-ADZ30X2
FINISH SEE NOTE	UNIT OF MEASUREMENT INCH [ MILLIMETER ]		DSGN	SCALE NONE	IDENTIFICATION NO. T4205404
A	DRAWING RELEASE	CBM	03/29/01		
REV	DESCRIPTION	BY	DATE	ECO NO.	DO NOT SCALE THIS DRAWING
				FILE: T4205404	REV A
				SHEET 1 OF 1	