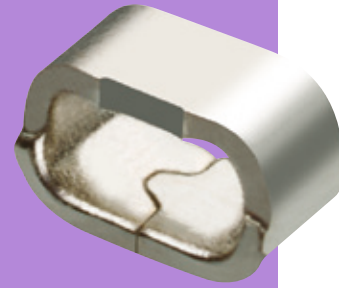


SMT Test Point

- ❖ Ideal for use with standard probes, clips and hooks.
- ❖ Can be placed using industry standard equipment.
- ❖ Suitable for automatic or manual test.
- ❖ High speed placement.
- ❖ Industry standard Tape & Reel packaging.
- ❖ Strong and durable.

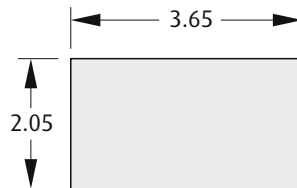
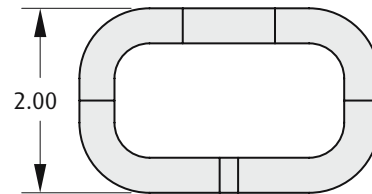
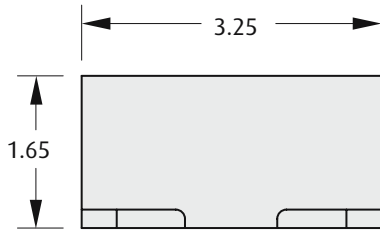


Materials

Material: Copper Alloy
 Finish: See Order Code

Packaging

Format: Tape & Reel or Loose
 Reel quantity: 2,500 on a Ø330mm reel



Recommended PC Board Pattern

HOW TO ORDER

S1751 - 46 R

SERIES CODE

FINISH

46 Tin

PACKAGING

R	Tape & Reeled
Blank	Loose

All dimensions in mm.