

## THRU-HOLE (THM) & SURFACE MOUNT (SMT) COIN CELL HOLDERS

### DESIGN ADVANTAGES...

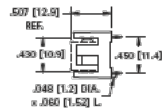
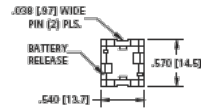
- Reliable spring tension assures low contact resistance
- Retains battery securely to withstand shock and vibration
- Base material UL Rated 94V-0, Impervious to most industrial solvents
- Operating temperature range: -60°F to +293°F (-50°C to +145°C)

### IDEALLY SUITED FOR...

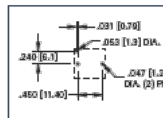
- Computer memory, power transfer and back-up systems
- Video and telecommunications power back-up
- Microprocessors and Microcomputer memory hold (desktop and laptop applications)
- Industrial and commercial security and alarm systems
- PC/104 application



THRU HOLE MOUNT



Mounting Detail



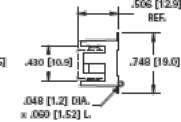
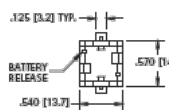
### MATERIAL:

Base: High Temperature Nylon 46, UL Rated 94V-0  
Contacts: .012 (.30) Phosphor Bronze, Tin Plate

CAT. NO.	CELLS	BATTERY REFERENCE
503	1	DL1/3N, K58L, CR1/3N
	2	SR44, 357, MS76, G-13, 303, V313, PX76A

### "1/3N"

AVAILABLE ON TAPE AND REEL



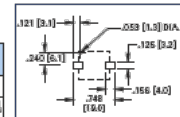
SURFACE MOUNT

### MATERIAL:

Base: High Temperature Nylon 46, UL Rated 94V-0  
Contacts: .012 (.30) Phosphor Bronze, Gold Plate (Flash)

CAT. NO. BULK	ON TAPE & REEL	CELLS	BATTERY REFERENCE
498	498TR	1	DL1/3N, K58L, CR1/3N
		2	SR44, 357, MS76, G-13, 303, V313, PX76A

Pad Layout

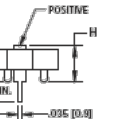
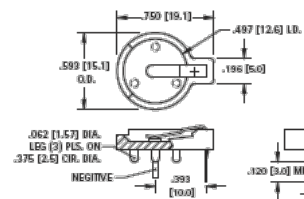


Tape & Reel Spec's: 4.4mm wide; 20mm pitch; 13 inch reel (200 pieces per reel)

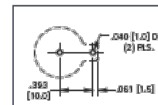
"1/3N" to 16mm COIN CELL HOLDERS



THRU HOLE MOUNT



Mounting Detail



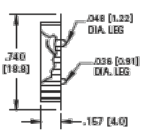
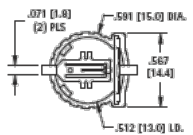
### MATERIAL:

Base: PBT, UL Rated 94V-0  
Positive Contact: .015 (.38) Spring Steel, Tin-Nickel Plate  
Negative Contact: .035 (.89) Dia. Steel, Tin-Nickel Plate

CAT. NO.	HEIGHT (H)	CELLS	BATTERY REFERENCE
500	.280 (7.1)	1	BR1212, CR1216, CL1220, CR1225
501	.380 (9.7)	2	BR1212, CR1216, CL1220, CR1225

### 12mm

AVAILABLE ON TAPE AND REEL



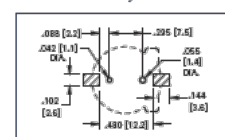
SURFACE MOUNT

### MATERIAL:

Base: Glass Filled PPS, UL Rated 94V-0  
Contacts: .008 (.20) Phosphor Bronze, Gold Plate (Flash)

CAT. NO. BULK	ON TAPE & REEL	CELLS	BATTERY REFERENCE
1056	1056TR	1	CR1220, BR1220

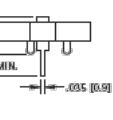
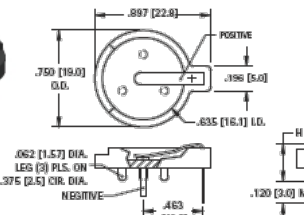
Pad Layout



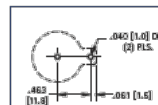
Tape & Reel Spec's: 3.2mm wide; 20mm pitch; 13 inch reel (500 per reel)



THRU HOLE MOUNT



Mounting Detail



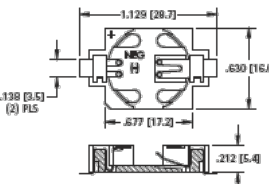
### MATERIAL:

Base: PBT, UL Rated 94V-0  
Positive Contact: .015 (.38) Spring Steel, Tin-Nickel Plate  
Negative Contact: .035 (.89) Dia. Steel, Tin-Nickel Plate

CAT. NO.	HEIGHT (H)	CELLS	BATTERY REFERENCE
502	.285 (7.3)	1	CR1612, CL1616, CL1620
		2	CR1612
502-3	.330 (8.4)	1	BR1625, CR1632
		2	BR1616, CR1620, CL1620

### 16mm

AVAILABLE ON TAPE AND REEL



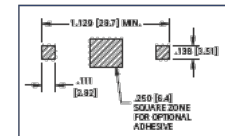
SURFACE MOUNT

### MATERIAL:

Base: Glass Filled LCP, UL Rated 94V-0  
Contacts: .006 (.15) Phosphor Bronze, Gold Plate (Flash)

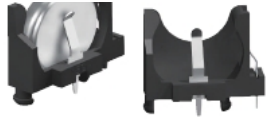
CAT. NO. BULK	ON TAPE & REEL	CELLS	BATTERY REFERENCE
504	504TR	1	BR1625, CR1625

Pad Layout



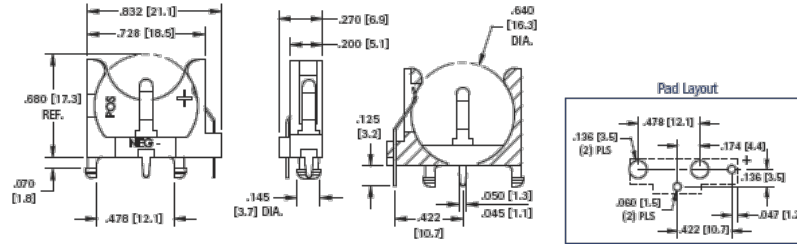
Tape & Reel Spec's: 4.4mm wide; 24mm pitch; 13 inch reel (500 per reel)

### 16mm VERTICAL



**MATERIAL:**  
**Base:** PBT, UL Rated 94V-0  
**Contacts:** .010 (.25) Steel, Tin-Nickel Plate  
**Battery Reference:** (1) cell BR1612, CR1616, CL1620, CR1625, BR1632

**CAT. NO. 1069**



2

Tel (718) 956-8900 • Fax (718) 956-9040  
 (800) 221-5510 • [kce@keyelco.com](mailto:kec@keyelco.com)



[www.keyelco.com](http://www.keyelco.com)  
 31-07 20th Road - Astoria, NY 11105-2017