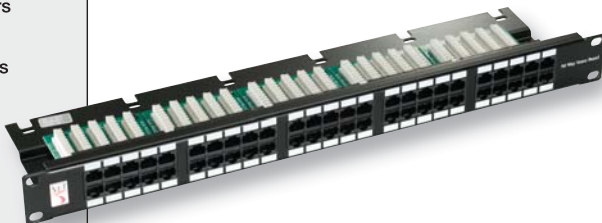


Features & Benefits

- ✕ 50 voice ports in 1u
- ✕ 8-way RJ45 sockets with three pairs connected
- ✕ Analogue, Digital and ISDN systems supported



Ordering Information

Product Description

50 Way Voice Panel

Part Number

009-001-002-10

Cabinet space is too valuable to have it taken up by stacks of voice panels, which is why Connectix offer a high-density voice panel packing 50 dedicated voice ports in a 1u panel.

Specification

Width	19" (483mm)
Depth	120mm
Height	1U (44mm)
Fixing Centres	467mm
Material	1.5mm thick mild steel CR4 BS1449
Finish	Black Powder Coat to BS6496
Socket Labels	Silk screened blocks
IDC Labels	Pairs indicated by PIN numbers
RJ45 Sockets	2 x 5 unshielded stacked RJ45 jacks
IDC Blocks	Industry standard 4 way IDC's
PCB	1.6mm Double Sided PTH boards
Wiring Spec.	Pairs 1, 2 & 3 connected straight through. Pair 4 not connected

Each 8-way RJ45 socket has three pairs connected. This ensures that the panels can be used with analogue, digital and ISDN systems.