



FS5(L) family flow module

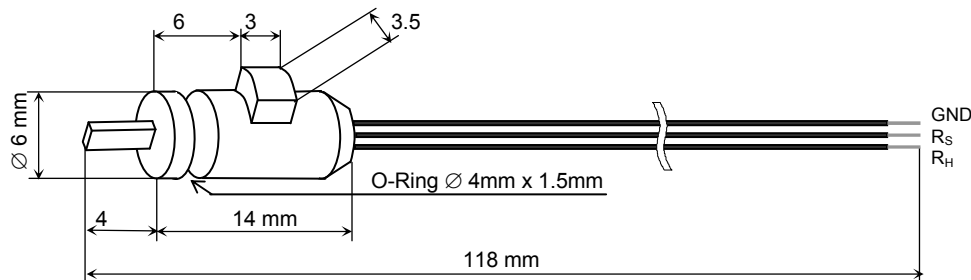
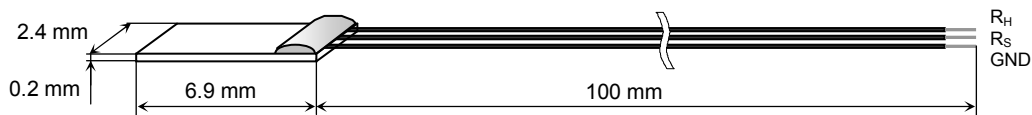
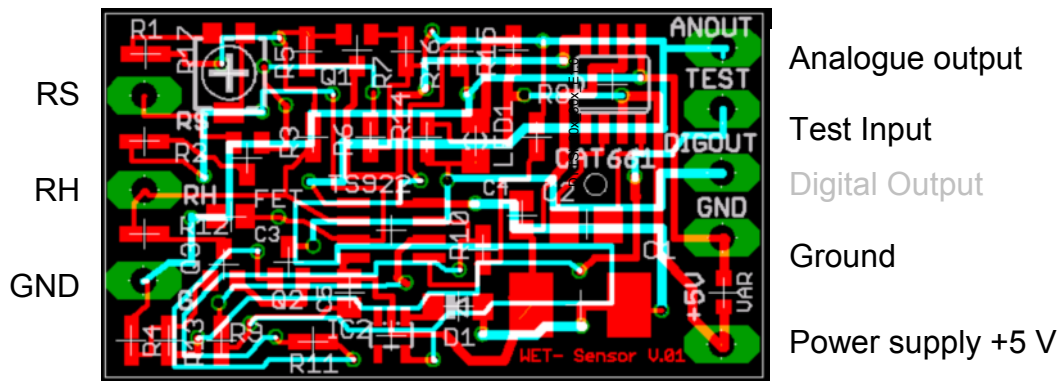
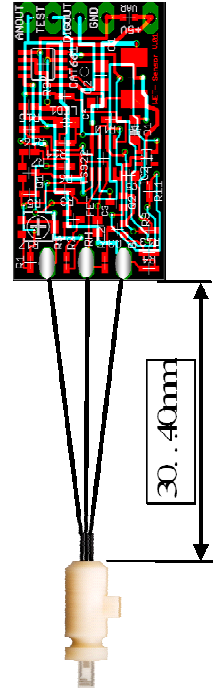


Attention:
Module has no output short circuit protection and inverse polarity protection of power supply

The module intern main voltage is 10Volts (2 x power supply).

Preliminary technical data

Measuring principle	Thermal
IST sensor to be applied	Air (FS5) / Liquid (FS5L)
Warm up time	< 30 s
Time response	< 100 ms
Temperature range	0 ... +80 °C (liquid)
Electrical connection	Solder pads
Heater	$R_H(0^{\circ}C) = 45 \Omega \pm 1\%$
Reference sensor	$R_S(0^{\circ}C) = 1200 \Omega \pm 1\%$
Power supply	5 V DC $\pm 5\%$
Supply current	90 ... 160 mA (Air / Liquid)
Analogue output, non linear	0 (2) ... 10 V; 50 mA (operating point @ air = 5 V)
Digital output	Inactive , do not use
Test input	do not use
Analogue threshold voltage	N/A
Air flow threshold value	N/A



All mechanical dimensions are valid at 25°C ambient temperature, if not differently indicated. All data except the mechanical dimensions only have information purposes and are not to be understood as assured characteristics. Technical changes without previous announcement as well as mistakes reserve. The information on this data sheet was examined carefully and will be accepted as correct. No liability in case of mistakes. Load with extreme values during a longer period can affect the reliability. All rights reserved. The material contained herein may not be reproduced, adapted, merged, translated, stored, or used without the prior written consent of the copyright owner. Typing errors and mistakes are subject to change without notice. All rights reserved.

