

Receptacle Contacts

**Technical Features**

**Material**

Contact: CuNiSi  
Pin Contact: Copper-Alloy  
Cantilever Spring: Stainless Steel

**Contact Finish:**

Pre-tin plated, silver plated,  
gold plated

**Conductor Binding:**

Crimp Technology/Insulation  
Displacement/FFC/Welding Area

**Wire Size Range:**

0.14–0.75 mm<sup>2</sup> Single  
Wires (FLR)/AWG 18–22

**Current Carrying Capacity:**

Up to 7.5 A at 80 °C

**Temperature Range:**

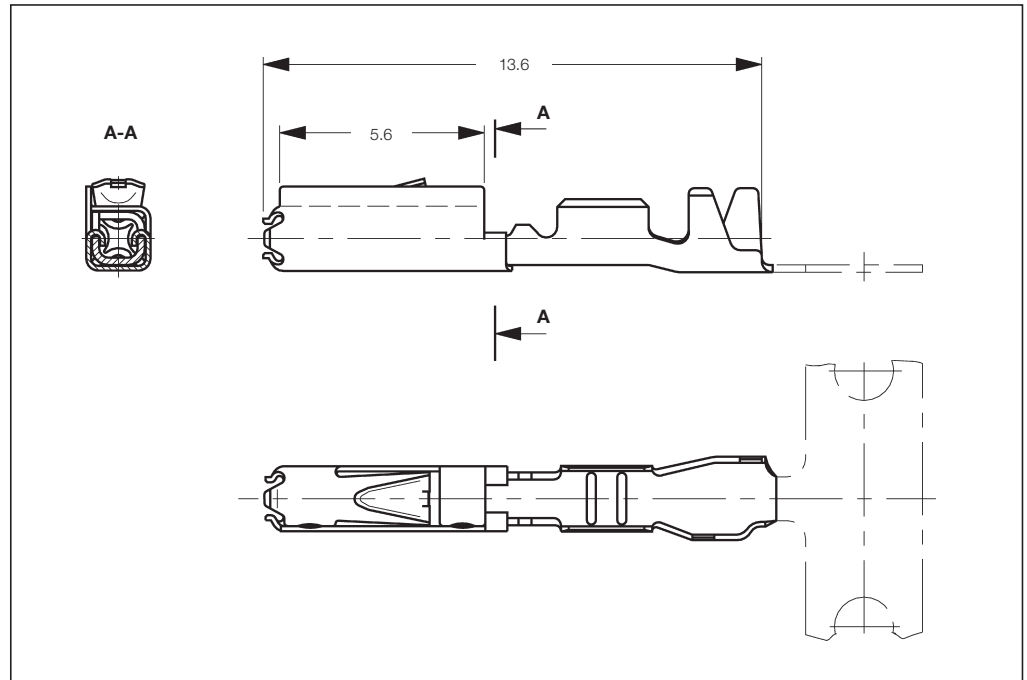
–40 °C ... +120 °C (tin plated)  
–40 °C ... +130 °C (silver plated)  
–40 °C ... +140 °C (gold plated)

**Centerline:**

2.54 x 2.54 mm Standard  
4.0 x 4.0 mm SWS Standard  
4.0 x 3.5 mm SWS Staggered

**Mating Cycles:**

20 tin plated  
20 silver plated  
100 gold plated



**Special Applications:**

Inmoldable Pin Contact,  
Insulation Displacement  
Receptacle Contact,  
Receptacle Contact with  
Short Circuit Area

**Table Drawings:**

929454 (Receptacle Contact)  
929453 (Pin Contact)

**Application Specification:**

114-18021 Standard  
114-18025 SWS System

**Product Specification:**

108-18030

**Extraction Tools:**

Part No. **6-1579007-0** Clean Body  
Part No. **6-1579007-1** Standard or  
Part No. **1355968-1**

**Standard Receptacle Contacts**

| Wire Size Range (mm <sup>2</sup> ) | Insulation Diameter |          | Material and Finish | Part Numbers |                  |             |                  | Applicator |             | Hand Tool 539635-1 with Die Set |
|------------------------------------|---------------------|----------|---------------------|--------------|------------------|-------------|------------------|------------|-------------|---------------------------------|
|                                    | FLK (mm)            | FLR (mm) |                     | Strip Form   | Package Quantity | Loose-Piece | Package Quantity | Standard   | Fine Adjust |                                 |
|                                    |                     |          |                     |              |                  |             |                  |            |             |                                 |
| 0.14–0.22                          | –                   | 0.9–1.2  | pre-tin plated      | 1355717-1    | 13,000           | 1355718-1   | 500              | 1426402    | 1528009     | 5-1579001-2                     |
|                                    |                     |          | gold plated         | 1355717-5    | 13,000           | 1355718-5   | 500              |            |             |                                 |
| 0.20–0.50                          | –                   | 0.9–1.6  | pre-tin plated      | 928999-1     | 13,000           | 963726-1    | 1,000            | 1238043*   | 1528035*    | 539682-2                        |
|                                    |                     |          | gold plated         | 928999-5     | 13,000           | 963726-5    | 1,000            |            |             |                                 |
|                                    |                     |          | silver plated       | 928999-6     | 13,000           | 963726-6    | 1,000            |            |             |                                 |
|                                    |                     |          | pre-tin plated      | 963715-1     | 10,000           | 963729-1    | 500              |            |             |                                 |
| 0.50–0.75                          | –                   | 1.4–1.9  | gold plated         | 963715-5     | 10,000           | 963729-5    | 500              | 1238051    | 1528037     | 3-1579001-5                     |
|                                    |                     |          | silver plated       | 963715-6     | 10,000           | 963729-6    | 500              |            |             |                                 |

\*) Applicator: Part No. **1426459** and **1528313** for use with 0.2 mm<sup>2</sup> wire

**Single Wire Sealing System**

| Wire Size Range (mm <sup>2</sup> ) | Insulation Diameter |          | Material and Finish | Part Numbers |                  |             |                  | Applicator |             | Hand Tool 539635-1 with Die Set |
|------------------------------------|---------------------|----------|---------------------|--------------|------------------|-------------|------------------|------------|-------------|---------------------------------|
|                                    | FLK (mm)            | FLR (mm) |                     | Strip Form   | Package Quantity | Loose-Piece | Package Quantity | Standard   | Fine Adjust |                                 |
|                                    |                     |          |                     |              |                  |             |                  |            |             |                                 |
| 0.20–0.50                          | –                   | 0.9–1.6  | pre-tin plated      | 962885-1     | 9,000            | 963727-1    | 500              | 1426108    | 1528022     | 539685-2                        |
|                                    |                     |          | gold plated         | 962885-5     | 9,000            | 963727-5    | 500              |            |             |                                 |
|                                    |                     |          | silver plated       | 962885-6     | 9,000            | 963727-6    | 500              |            |             |                                 |
| 0.50–0.75                          | –                   | 1.4–1.9  | pre-tin plated      | 965906-1     | 9,000            | 965907-1    | 500              | 1426123    | 1528071     | 5-1579001-1                     |
|                                    |                     |          | gold plated         | 965906-5     | 9,000            | 965907-5    | 500              |            |             |                                 |
|                                    |                     |          | silver plated       | 965906-6     | 9,000            | 965907-6    | 500              |            |             |                                 |